

Beautiful Corner Lot Home in Cleveland Bolivar County, MS



508 S. Fifth Ave. Cleveland, MS 38732

Take a look at this renovated home sitting on the corner of Fifth Ave in Cleveland, Bolivar County, MS. This home features 2,431 sqft with three bedrooms and two bathrooms and features new floors, new paint, and new countertops with granite and quartz throughout. The house offers plenty of storage, with a huge pantry and a large storage room. The primary bedroom has a soaking tub, a walk-in shower, and a huge walk-in closet! This home also has a screened-in patio that makes the perfect place to grill and have a family get-together for you and your friends. The large backyard is fenced in and has two sheds offering plenty of space for pets and storage for lawn equipment. Call Anthony today for a private showing!

Directions from HWY 61 and HWY 8 in Cleveland, MS: Travel West on Hwy 8 for 1 mile. Turn left on N. Fifth Ave and after 0.6 miles, the house will be on the right. [Click for Google Maps.](#)



**ANTHONY
STEEN**
REALTOR®

Office: 662.441.2500

Cell: 662.645.5151

Anthony@TomSmithLand.com



A Real Estate Expert You Can Trust

TomSmithLandandHomes.com

Information is believed to be accurate but not guaranteed.





ANTHONY STEEN

REALTOR®

Office: 662.441.2500

Cell: 662.645.5151

Anthony@TomSmithLand.com



A Real Estate Expert You Can Trust

TomSmithLandandHomes.com

Information is believed to be accurate but not guaranteed.





ANTHONY STEEN

REALTOR®

Office: 662.441.2500

Cell: 662.645.5151

Anthony@TomSmithLand.com

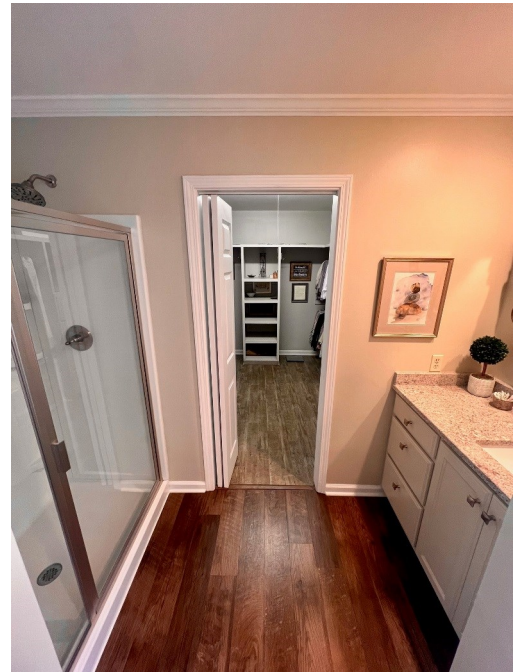


A Real Estate Expert You Can Trust

TomSmithLandandHomes.com

Information is believed to be accurate but not guaranteed.





ANTHONY STEEN

REALTOR®

Office: 662.441.2500

Cell: 662.645.5151

Anthony@TomSmithLand.com



A Real Estate Expert You Can Trust
TomSmithLandandHomes.com

Information is believed to be accurate but not guaranteed.



AERIAL MAP



[Click for Interactive Map](#)

ANTHONY STEEN
REALTOR®

Office: 662.441.2500

Cell: 662.645.5151

Anthony@TomSmithLand.com

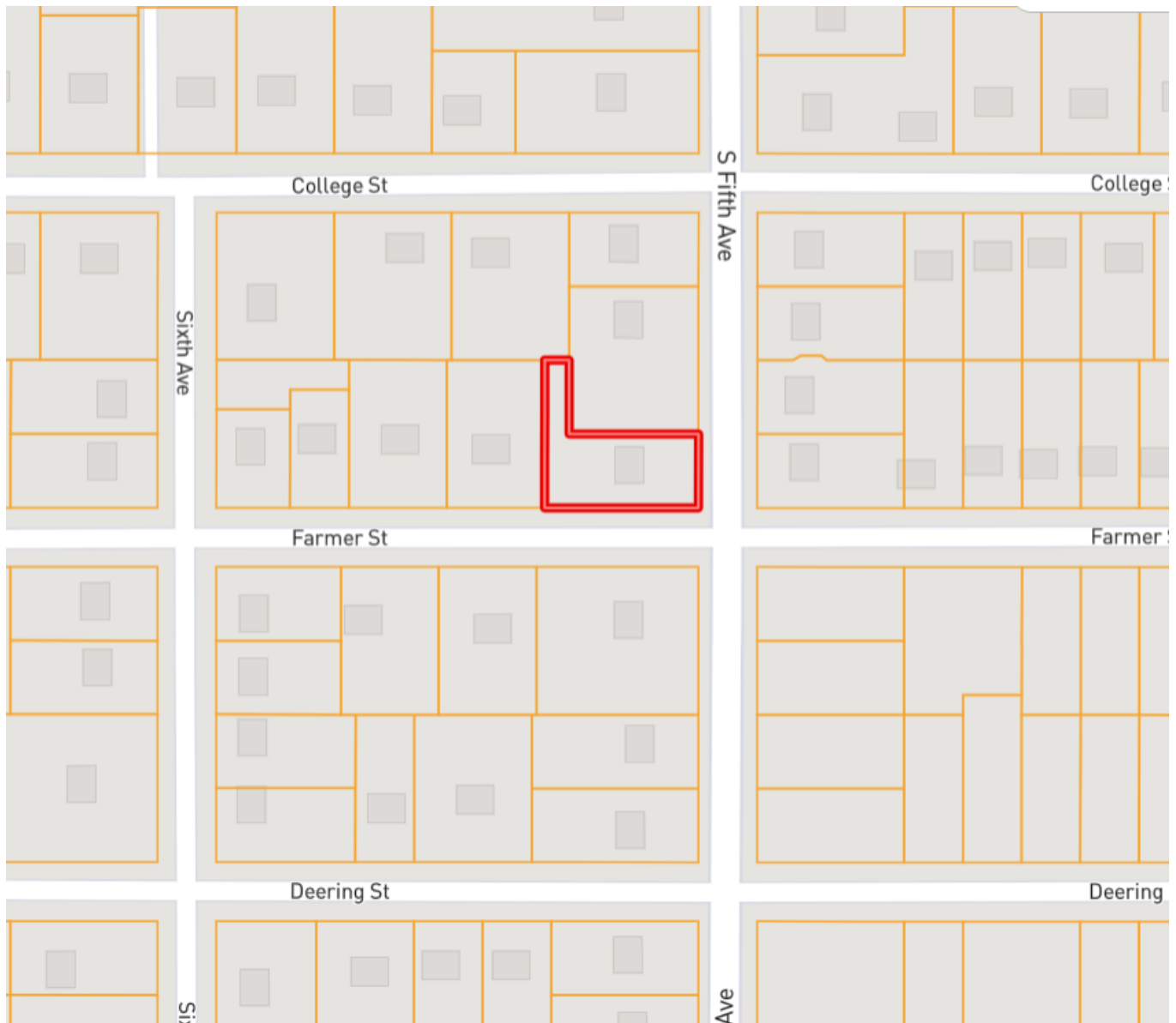


A Real Estate Expert You Can Trust
TomSmithLandandHomes.com

Information is believed to be accurate but not guaranteed.



OWNERSHIP MAP



ANTHONY STEEN

REALTOR®

Office: 662.441.2500

Cell: 662.645.5151

Anthony@TomSmithLand.com



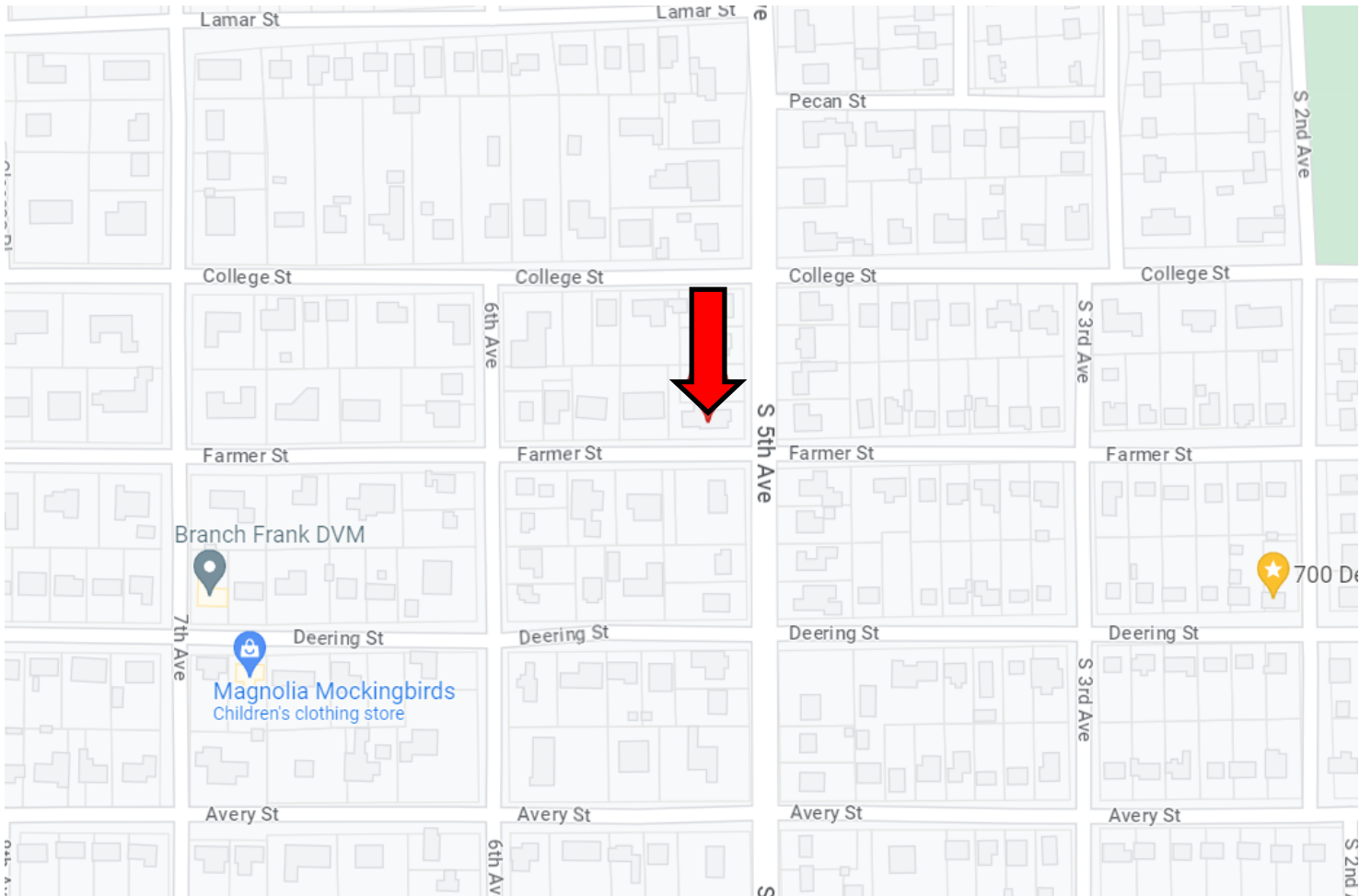
A Real Estate Expert You Can Trust

TomSmithLandandHomes.com

Information is believed to be accurate but not guaranteed.



DIRECTIONAL MAP



508 S. Fifth Ave. Cleveland, MS 38732

Directions from HWY 61 and HWY 8 in Cleveland, MS: Travel West on Hwy 8 for 1 mile. Turn left on N. Fifth Ave and after 0.6 miles, the house will be on the right. [Click for Google Maps](#)



**ANTHONY
STEEN**
REALTOR®

Office: 662.441.2500

Cell: 662.645.5151

Anthony@TomSmithLand.com



A Real Estate Expert You Can Trust

TomSmithLandandHomes.com

Information is believed to be accurate but not guaranteed.

