

Development Property 40± Acres in Prentiss County, MS



\$142,000

Welcome to quiet and country living! This 40± acre development property in Prentiss County, MS, is just 7 miles outside the Baldwyn city limits. This property offers many possibilities, including accessible power, water, and road frontage. The timber was cut two years ago, and the land benefits from a network of well-established logging roads that traverse the property for easy access. This versatile property seamlessly connects to potential development, hunting grounds, pasture utilization, or even your future dream home. The options for this property are endless, offering you the canvas to create your vision. Call Kyle to schedule your showing today!



**KYLE
CARPENTER**
REALTOR®

Office: 662.268.6333

Cell: 662.523.5988

Kyle@TomSmithHomes.com



A Real Estate Expert You Can Trust

TomSmithLandandHomes.com

Information is believed to be accurate but not guaranteed.





**KYLE
CARPENTER**
REALTOR®

Office: 662.268.6333

Cell: 662.523.5988

Kyle@TomSmithHomes.com



A Real Estate Expert You Can Trust

TomSmithLandandHomes.com

Information is believed to be accurate but not guaranteed.





**KYLE
CARPENTER**
REALTOR®

Office: 662.268.6333

Cell: 662.523.5988

Kyle@TomSmithHomes.com



A Real Estate Expert You Can Trust

TomSmithLandandHomes.com

Information is believed to be accurate but not guaranteed.





**KYLE
CARPENTER**
REALTOR®

Office: 662.268.6333

Cell: 662.523.5988

Kyle@TomSmithHomes.com



A Real Estate Expert You Can Trust

TomSmithLandandHomes.com

Information is believed to be accurate but not guaranteed.





KYLE
CARPENTER
REALTOR®

Office: 662.268.6333

Cell: 662.523.5988

Kyle@TomSmithHomes.com



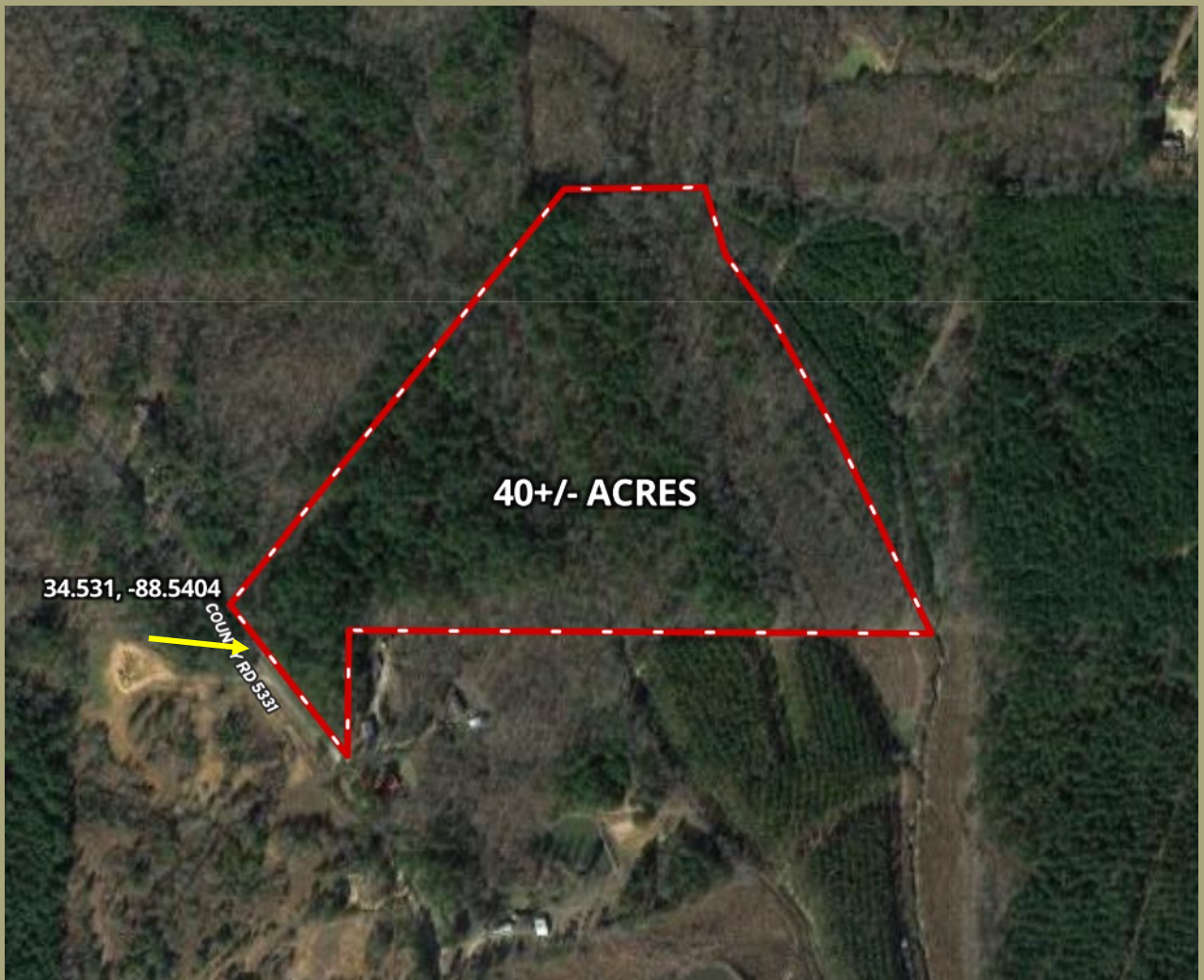
A Real Estate Expert You Can Trust

TomSmithLandandHomes.com

Information is believed to be accurate but not guaranteed.



AERIAL MAP



[CLICK HERE FOR AN INTERACTIVE MAP](#)



KYLE
CARPENTER
REALTOR®

Office: 662.268.6333

Cell: 662.523.5988

Kyle@TomSmithHomes.com



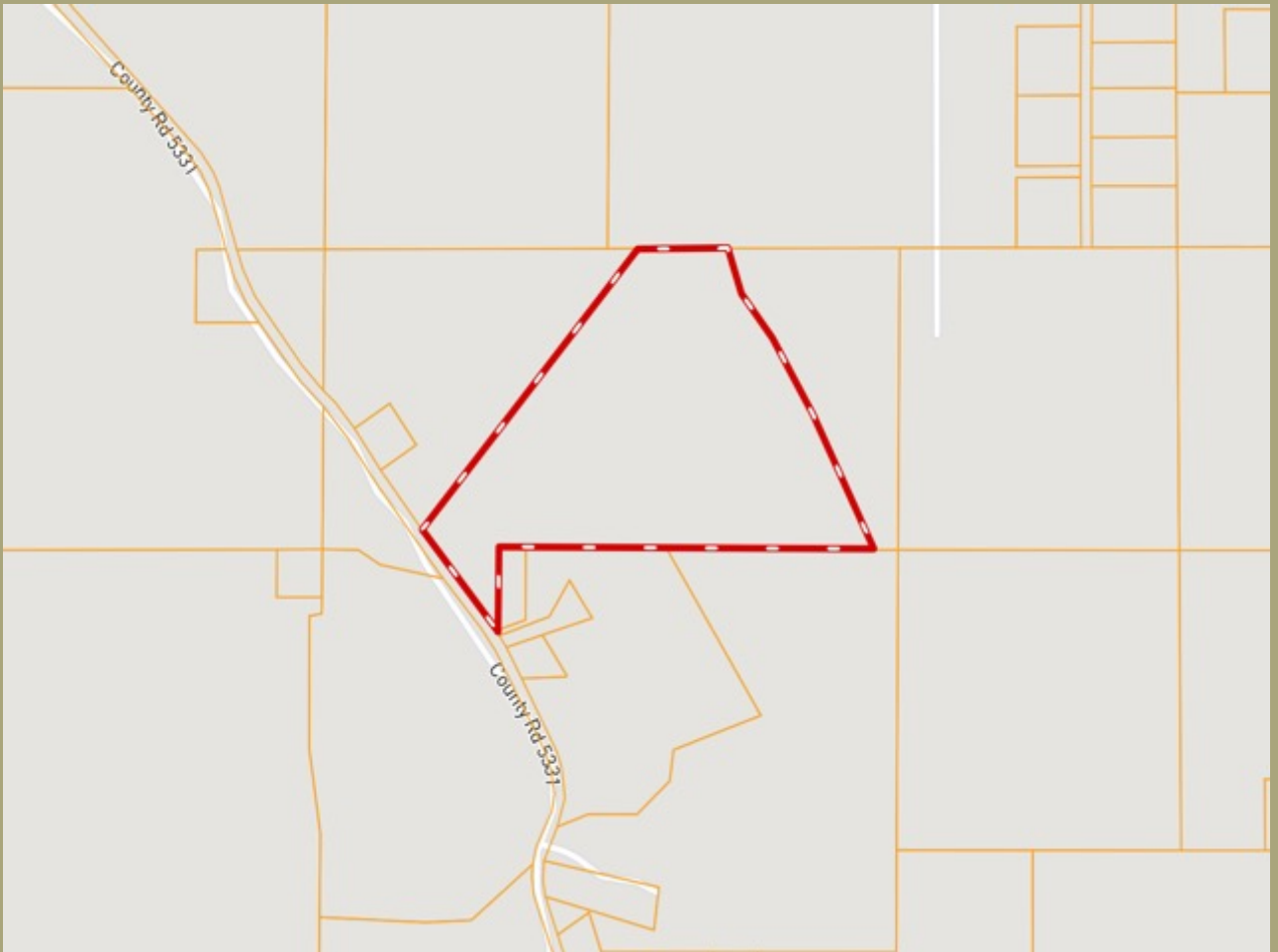
A Real Estate Expert You Can Trust

TomSmithLandandHomes.com

Information is believed to be accurate but not guaranteed.



Ownership Map



KYLE
CARPENTER
REALTOR®

Office: 662.268.6333

Cell: 662.523.5988

Kyle@TomSmithHomes.com



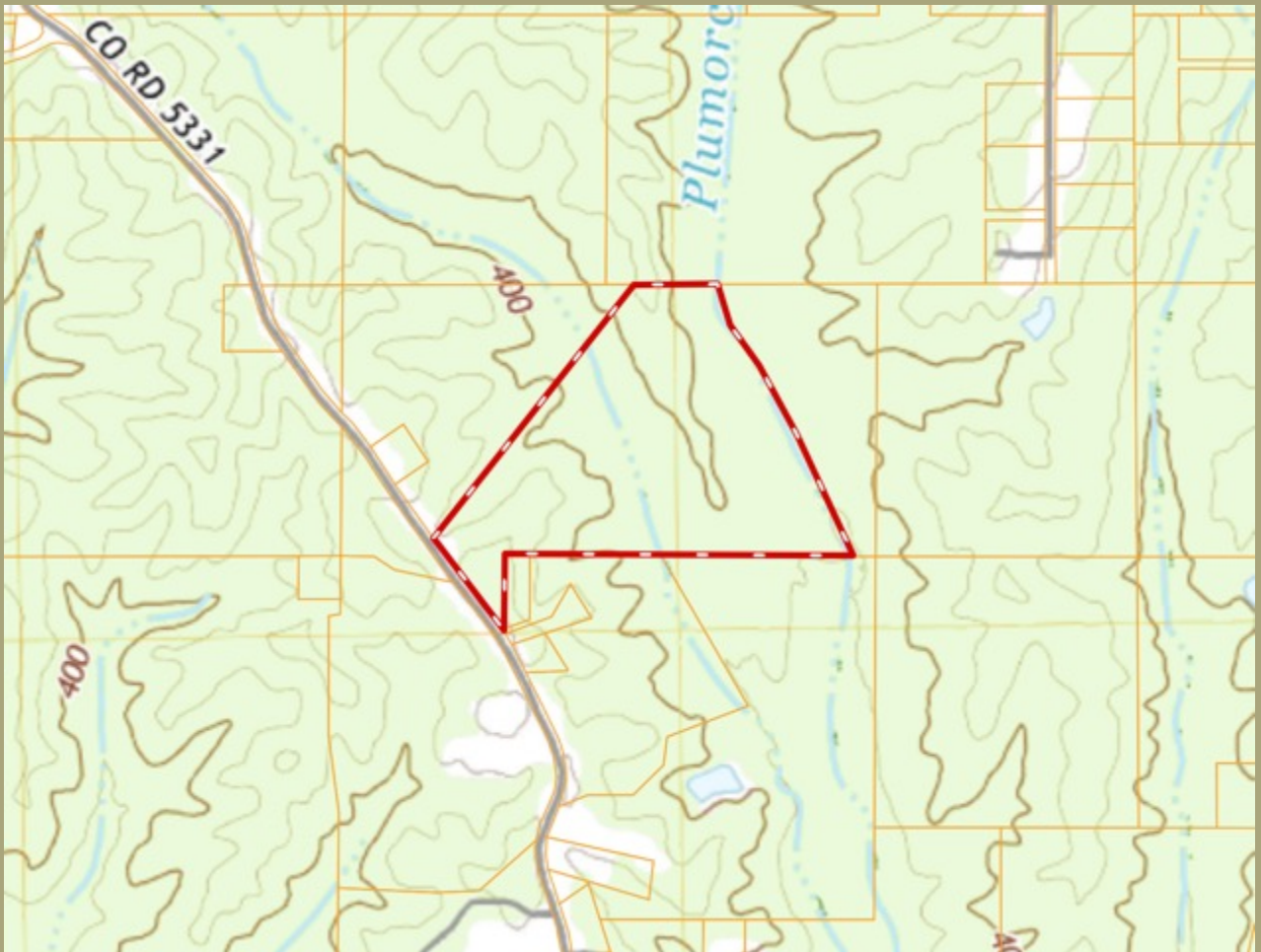
A Real Estate Expert You Can Trust

TomSmithLandandHomes.com

Information is believed to be accurate but not guaranteed.



TOPO MAP



KYLE
CARPENTER
REALTOR®

Office: 662.268.6333

Cell: 662.523.5988

Kyle@TomSmithHomes.com



A Real Estate Expert You Can Trust

TomSmithLandandHomes.com

Information is believed to be accurate but not guaranteed.



FEMA FLOODPLAIN



KYLE
CARPENTER
REALTOR®

Office: 662.268.6333

Cell: 662.523.5988

Kyle@TomSmithHomes.com



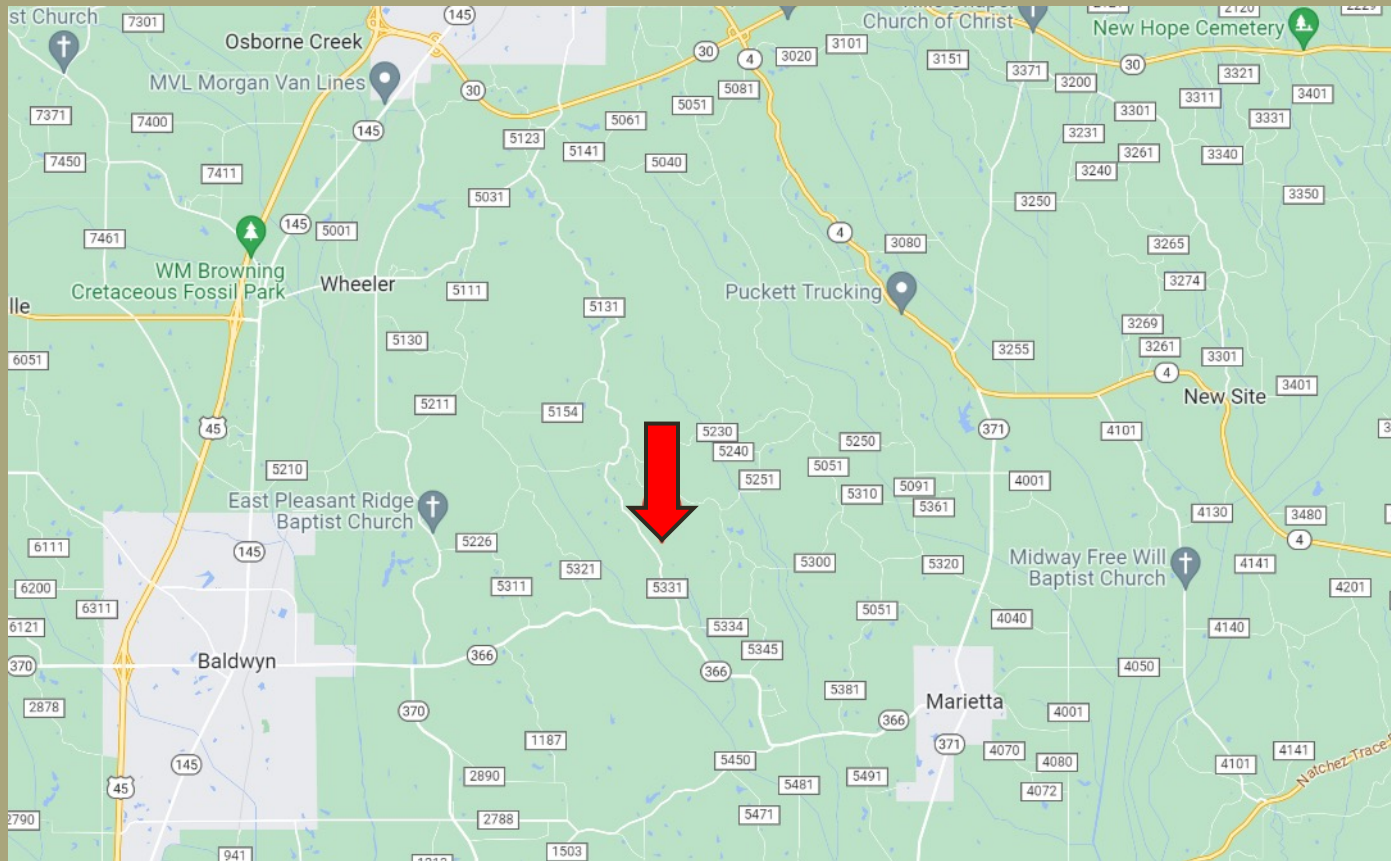
A Real Estate Expert You Can Trust

TomSmithLandandHomes.com

Information is believed to be accurate but not guaranteed.



DIRECTIONAL MAP



Directions from Hwy 145 South and E. Clayton Street in Baldwyn, MS:

Travel E Clayton Street/MS-370 E for 2.1 miles. Continue onto HWY 366 and travel 3.8 miles. Turn left onto County Road 5331. After 1.2 miles, the property will be on your right.

[Click for Directions](#)



**KYLE
CARPENTER**
REALTOR®

Office: 662.268.6333

Cell: 662.523.5988

Kyle@TomSmithHomes.com



A Real Estate Expert You Can Trust

TomSmithLandandHomes.com

Information is believed to be accurate but not guaranteed.

