

# 1.1± ACRE RESIDENTIAL LOT

## Near Enid Lake in Yalobusha County, MS



# \$16,000

This 1.1± acre residential lot in Yalobusha County, MS, is approximately 4.2 miles from Interstate 55 and only minutes from Cossar State Park and Enid Lake. This makes it an ideal spot for anyone who enjoys fishing or water sports. This lot is tucked away in a nice, well-kept neighborhood with high-speed internet powered by TVI Fiber and beautiful nature and wildlife. Come check it out and get submerged in a nature lovers' paradise. Call Kadero Edley for a private showing today!

**Directions from I-55 in Oakland, MS:** Take Exit 227 and travel .2 miles. Turn right onto MS-32/Hwy 32 E. and travel 2.5 miles. Turn left onto Co Rd 170 and travel 1.3 miles. Turn right onto Robinson Chapel Rd/Co Rd 27. After .1 mile, the property will be on the right.



**KADERO  
EDLEY**  
REALTOR®

Office: 601.898.2772  
Cell: 601.488.7000  
Kadero@TomSmithLand.com



## A Real Estate Expert You Can Trust

TomSmithLandandHomes.com

Information is believed to be accurate but not guaranteed.







**KADERO EDLEY**

REALTOR®

Office: 601.898.2772

Cell: 601.488.7000

Kadero@TomSmithLand.com



**A Real Estate Expert You Can Trust**

TomSmithLandandHomes.com

Information is believed to be accurate but not guaranteed.





# Aerial Map



[Interactive Map Link](#)

**KADERO EDLEY**

REALTOR®

Office: 601.898.2772

Cell: 601.488.7000

Kadero@TomSmithLand.com



Expect More. Get More.

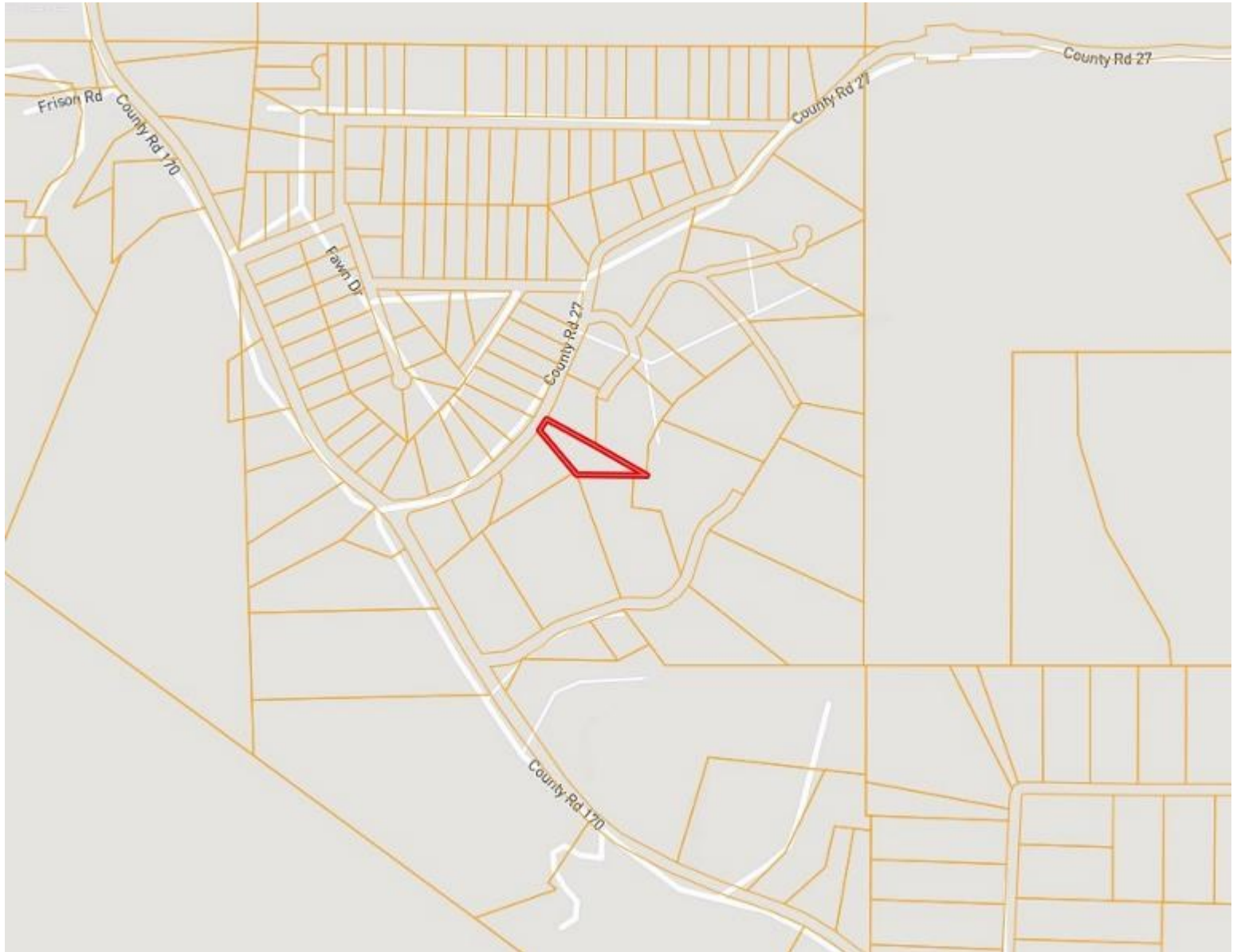
**A Real Estate Expert You Can Trust**

[TomSmithLandandHomes.com](http://TomSmithLandandHomes.com)

Information is believed to be accurate but not guaranteed.

2011-2023  
**BEST**  
BROKERAGES

# Ownership Map



**KADERO EDLEY**

REALTOR®

Office: 601.898.2772

Cell: 601.488.7000

Kadero@TomSmithLand.com



**A Real Estate Expert You Can Trust**

TomSmithLandandHomes.com

Information is believed to be accurate but not guaranteed.





# Flood Map



**KADERO EDLEY**

REALTOR®

Office: 601.898.2772

Cell: 601.488.7000

Kadero@TomSmithLand.com



**A Real Estate Expert You Can Trust**

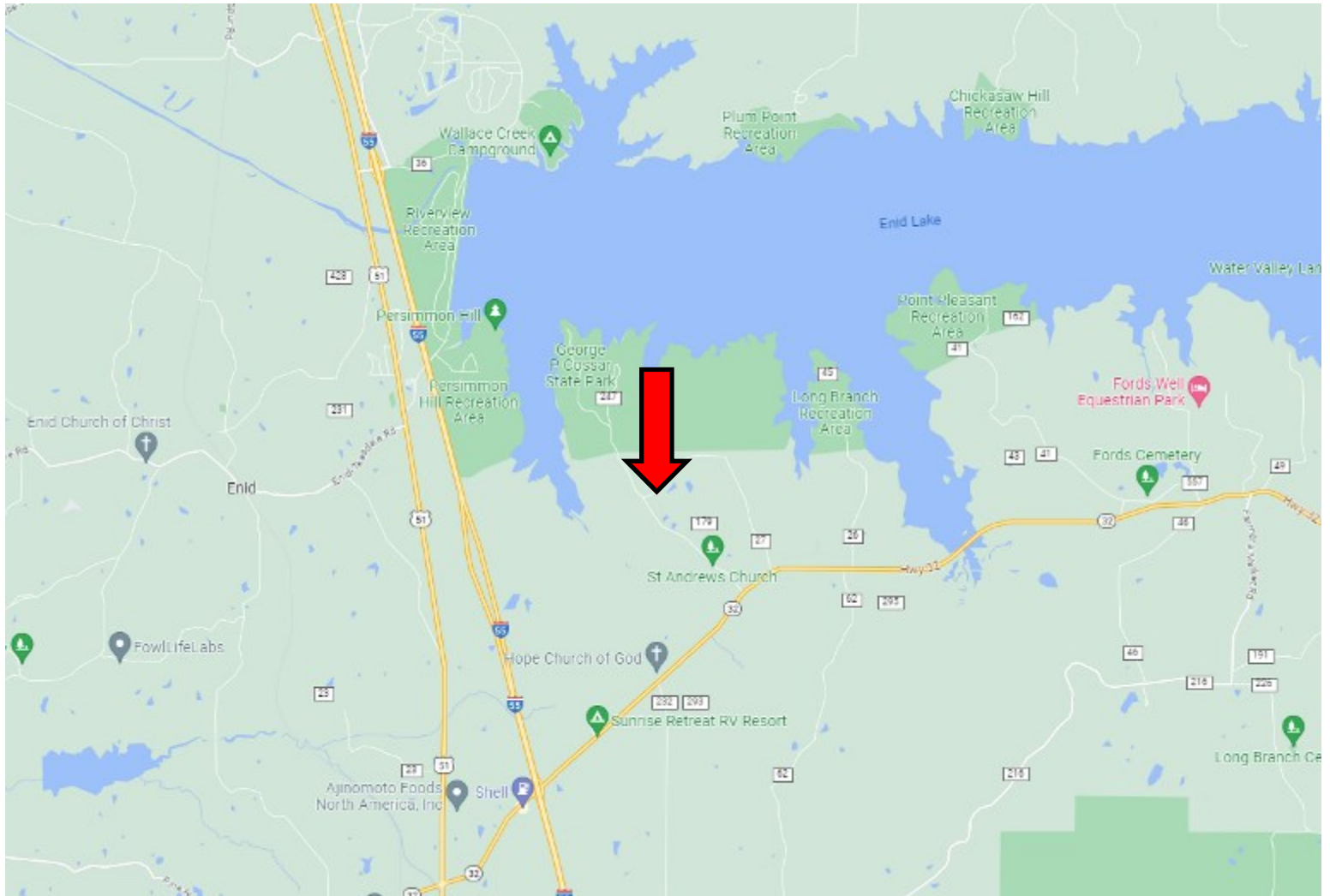
TomSmithLandandHomes.com

Information is believed to be accurate but not guaranteed.





# Directional Map



## Google Map Link

**Directions from I-55 in Oakland, MS:** Take Exit 227 and travel .2 miles. Turn right onto MS-32/Hwy 32 E. and travel 2.5 miles. Turn left onto Co Rd 170 and travel 1.3 miles. Turn right onto Robinson Chapel Rd/Co Rd 27. After .1 mile, the property will be on the right.



**KADERO  
EDLEY**  
REALTOR®

Office: 601.898.2772

Cell: 601.488.7000

Kadero@TomSmithLand.com



**A Real Estate Expert You Can Trust**

TomSmithLandandHomes.com

Information is believed to be accurate but not guaranteed.

