

# GREAT 3.2± ACRE RESIDENTIAL LOT

## Near Enid Lake in Yalobusha County, MS



\$45,000

This 3.2± acre residential lot in Enid, Yalobusha County, MS, is close to Interstate 55 and only minutes from Cossar State Park and Enid Lake. This makes it an ideal spot for anyone who enjoys fishing or water sports, with beautiful nature and wildlife throughout the area. Come check it out and get submerged in a nature lovers' paradise. To schedule your private viewing call Kadero Edley today!

**Directions from I-55 in Oakland, MS:** Take Exit 227 for Hwy 32 and travel .2 miles. Turn right onto MS-32/Hwy 32 E. and travel 2.5 miles. Turn left onto Co Rd 170 and travel .4 miles. The property will be on the right.



**KADERO  
EDLEY**  
REALTOR®

Office: 601.898.2772

Cell: 601.488.7000

Kadero@TomSmithLand.com



**A Real Estate Expert You Can Trust**

TomSmithLandandHomes.com

Information is believed to be accurate but not guaranteed.







**KADERO EDLEY**  
REALTOR®

Office: 601.898.2772

Cell: 601.488.7000

[Kadero@TomSmithLand.com](mailto:Kadero@TomSmithLand.com)



**A Real Estate Expert You Can Trust**

[TomSmithLandandHomes.com](http://TomSmithLandandHomes.com)

Information is believed to be accurate but not guaranteed.





# Aerial Map



[Interactive Map Link](#)

**KADERO EDLEY**  
REALTOR®

Office: 601.898.2772

Cell: 601.488.7000

Kadero@TomSmithLand.com



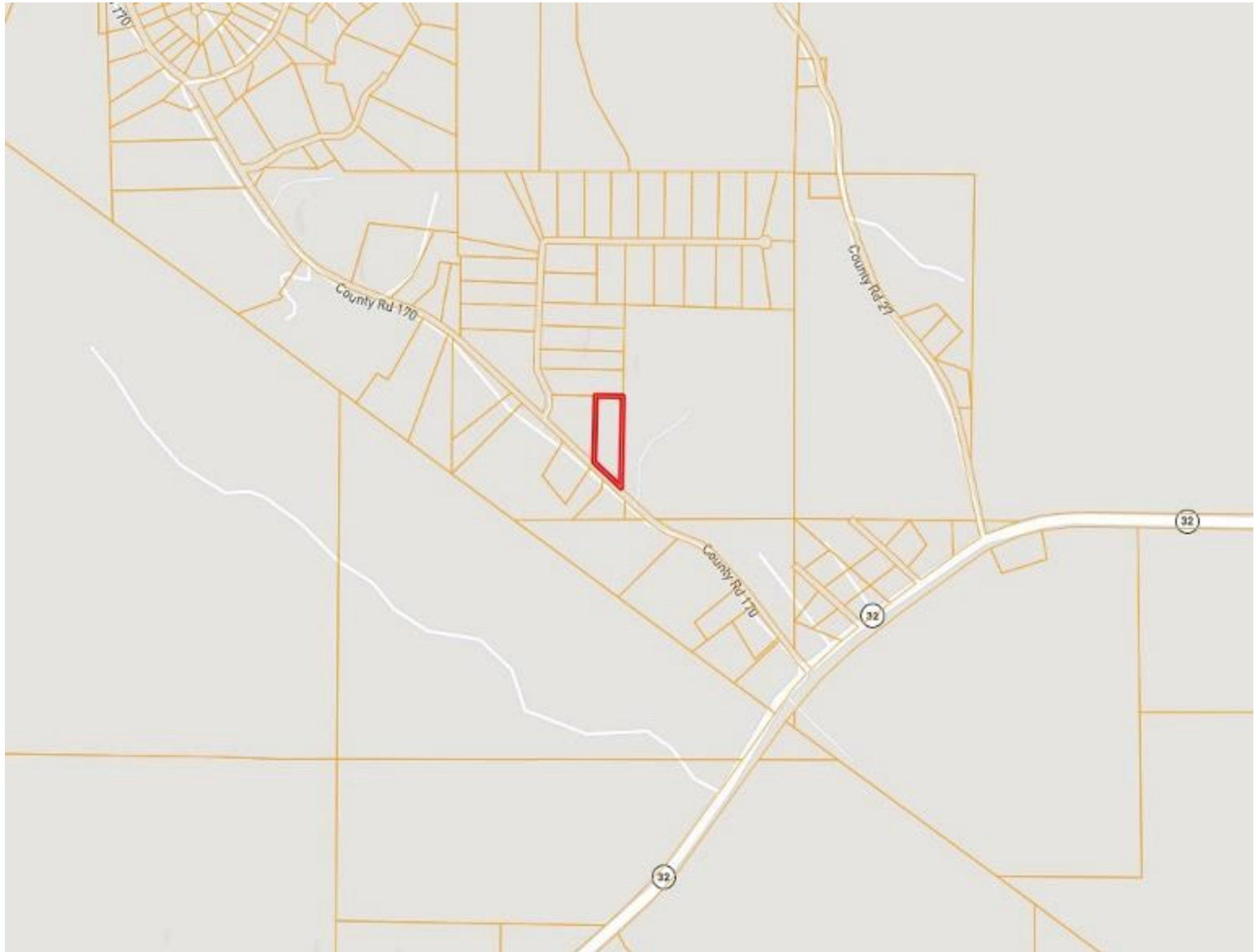
**A Real Estate Expert You Can Trust**

TomSmithLandandHomes.com

Information is believed to be accurate but not guaranteed.



# Ownership Map



**KADERO EDLEY**

REALTOR®

Office: 601.898.2772

Cell: 601.488.7000

Kadero@TomSmithLand.com



**A Real Estate Expert You Can Trust**

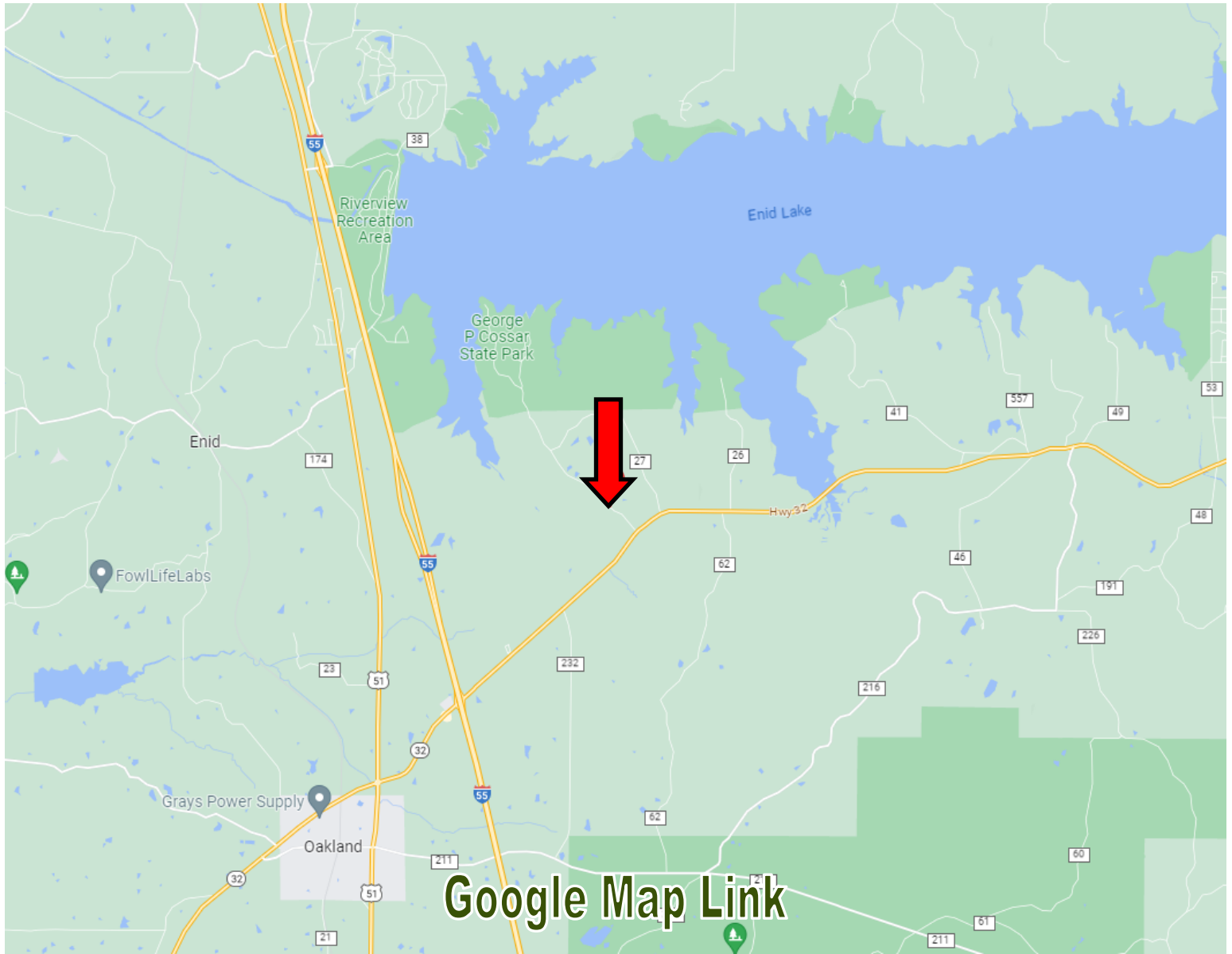
TomSmithLandandHomes.com

Information is believed to be accurate but not guaranteed.





# Directional Map



**Directions from I-55 in Oakland, MS:** Take Exit 227 for Hwy 32 and travel .2 miles. Turn right onto MS-32/Hwy 32 E. and travel 2.5 miles. Turn left onto Co Rd 170 and travel .4 miles. The property will be on the right.



**KADERO  
EDLEY**  
REALTOR®

Office: 601.898.2772  
Cell: 601.488.7000  
Kadero@TomSmithLand.com



**A Real Estate Expert You Can Trust**

TomSmithLandandHomes.com

Information is believed to be accurate but not guaranteed.

