

Victorian 5 Bedroom/4 Bath Bed & Breakfast

Downtown Columbia, MS



Welcome to this captivating Queen Anne residence in Marion County, a true masterpiece that exudes the historical charm and artistic elegance of 1896. As you step inside, you'll be captivated by the exquisite Lincrusta border, a hand-painted masterpiece by local artist Kym Garraway. The original fireplace mantels, 14-foot ceilings, and intricate wood trim beautifully showcase the craftsmanship of a bygone era. Enjoy the serenity of the wrap-around porch, which offers stunning views and a peaceful retreat. The main house boasts a spacious 4,303 square feet, featuring five bedrooms and four bathrooms, providing ample space for family and guests. In addition, there's a guest house constructed in 2007, spanning 1,256 square feet and offering two bedrooms, a full kitchen, and two bathrooms, ensuring privacy and comfort. This home has been meticulously maintained and underwent a complete renovation in the early 2000s, radiating a sense of care and attention to detail. The primary bedroom's sleeping porch invites you to savor the gentle breeze and soothing sounds of nature. Notably, the property has operated successfully as a word-of-mouth bed and breakfast, the only one in the area, and includes a shop equipped with electricity and water for added versatility and convenience. You'll appreciate the durability of the front porch, which features composite decking designed to withstand the test of time. Don't miss this extraordinary opportunity to own a historic treasure that seamlessly blends modern comforts with artistic brilliance. Call Danny or Haley to schedule your private showing today!



DANNY WILLOUGHBY
REALTOR®

O: 601.898.2772 | C: 601.720.9995
Danny@TomSmithLand.com



HALEY BELDEN
REALTOR®

O: 601.898.2772 | C: 601.209.2310
Haley@TomSmithHomes.com

TomSmithLandandHomes.com

Information is believed to be accurate but not guaranteed.





DANNY WILLOUGHBY
REALTOR®
O: 601.898.2772 | C: 601.720.9995
Danny@TomSmithLand.com



HALEY BELDEN
REALTOR®
O: 601.898.2772 | C: 601.209.2310
Haley@TomSmithHomes.com

TomSmithLandandHomes.com

Information is believed to be accurate but not guaranteed.





DANNY WILLOUGHBY
REALTOR®

O: 601.898.2772 | C: 601.720.9995
Danny@TomSmithLand.com



HALEY BELDEN
REALTOR®

O: 601.898.2772 | C: 601.209.2310
Haley@TomSmithHomes.com

TomSmithLandandHomes.com

Information is believed to be accurate but not guaranteed.





DANNY WILLOUGHBY
REALTOR®

O: 601.898.2772 | C: 601.720.9995
Danny@TomSmithLand.com



HALEY BELDEN
REALTOR®

O: 601.898.2772 | C: 601.209.2310
Haley@TomSmithHomes.com

TomSmithLandandHomes.com

Information is believed to be accurate but not guaranteed.





DANNY WILLOUGHBY
 REALTOR®
 O: 601.898.2772 | C: 601.720.9995
 Danny@TomSmithLand.com

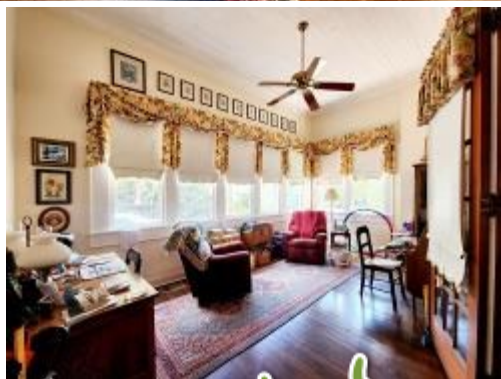


HALEY BELDEN
 REALTOR®
 O: 601.898.2772 | C: 601.209.2310
 Haley@TomSmithHomes.com

TomSmithLandandHomes.com

Information is believed to be accurate but not guaranteed.





DANNY WILLOUGHBY
REALTOR®

O: 601.898.2772 | C: 601.720.9995
Danny@TomSmithLand.com



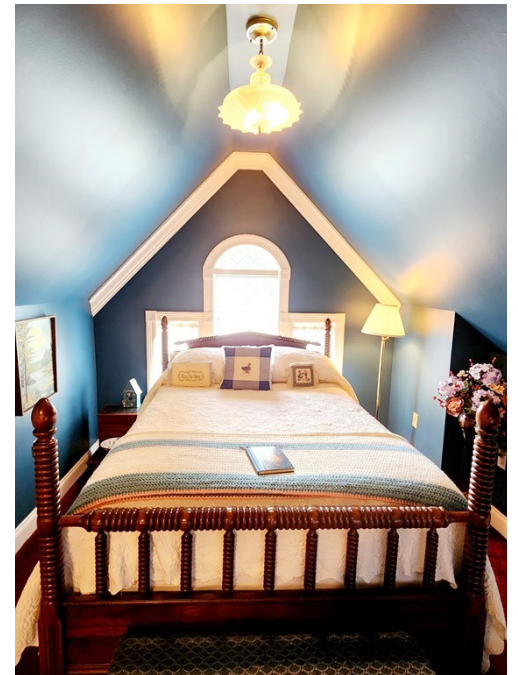
HALEY BELDEN
REALTOR®

O: 601.898.2772 | C: 601.209.2310
Haley@TomSmithHomes.com

TomSmithLandandHomes.com

Information is believed to be accurate but not guaranteed.





DANNY WILLOUGHBY
 REALTOR®
 O: 601.898.2772 | C: 601.720.9995
 Danny@TomSmithLand.com

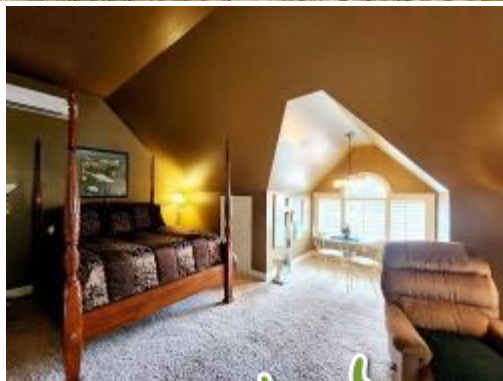


HALEY BELDEN
 REALTOR®
 O: 601.898.2772 | C: 601.209.2310
 Haley@TomSmithHomes.com

TomSmithLandandHomes.com

Information is believed to be accurate but not guaranteed.





DANNY WILLOUGHBY
REALTOR®

O: 601.898.2772 | C: 601.720.9995
Danny@TomSmithLand.com



HALEY BELDEN
REALTOR®

O: 601.898.2772 | C: 601.209.2310
Haley@TomSmithHomes.com

TomSmithLandandHomes.com

Information is believed to be accurate but not guaranteed.



AERIAL MAP



[Interactive Map Link](#)

DANNY WILLOUGHBY
REALTOR®

O: 601.898.2772 | C: 601.720.9995
Danny@TomSmithLand.com



HALEY BELDEN
REALTOR®

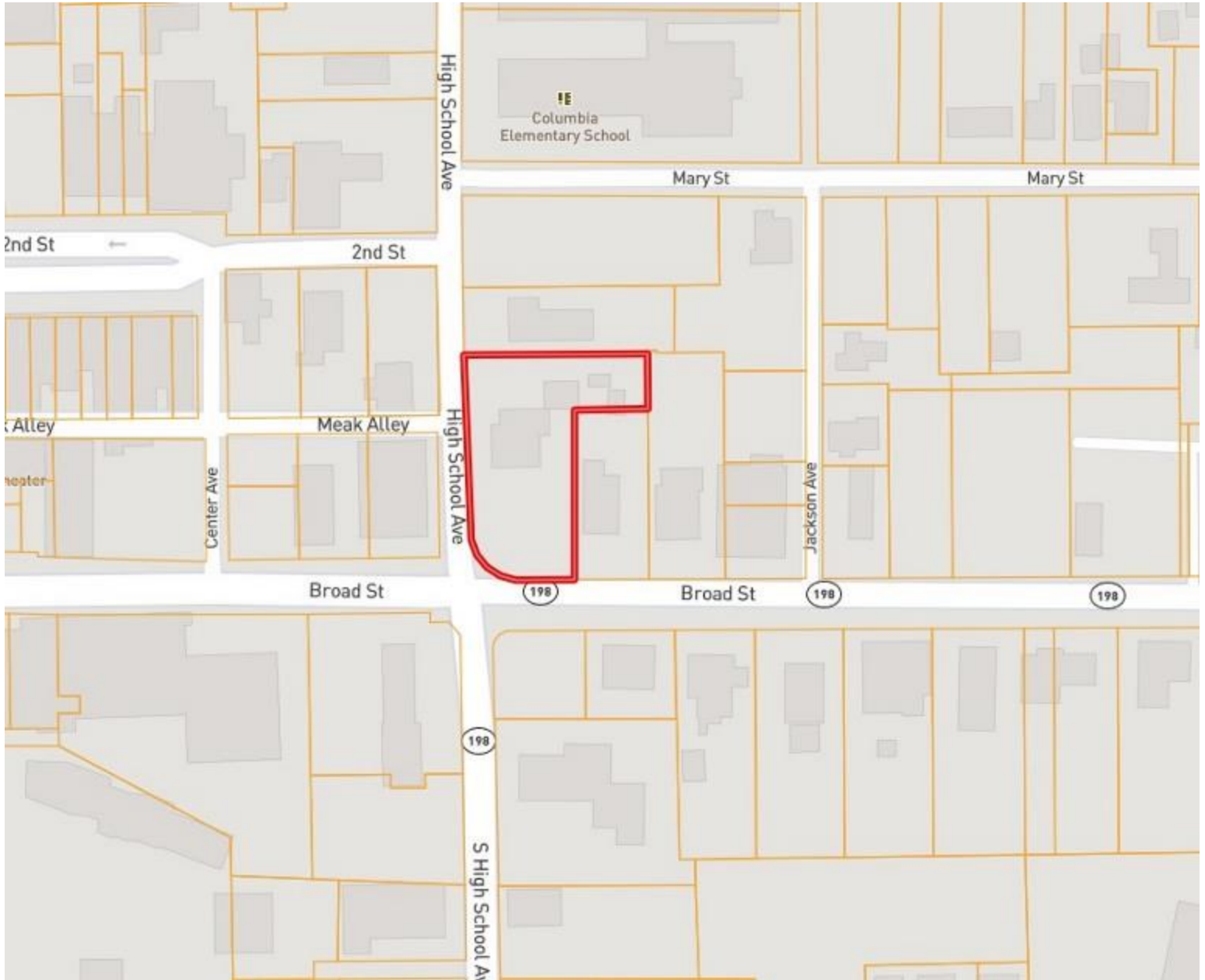
O: 601.898.2772 | C: 601.209.2310
Haley@TomSmithHomes.com

TomSmithLandandHomes.com

Information is believed to be accurate but not guaranteed.



OWNERSHIP MAP



DANNY WILLOUGHBY
REALTOR®

O: 601.898.2772 | C: 601.720.9995
Danny@TomSmithLand.com



HALEY BELDEN
REALTOR®

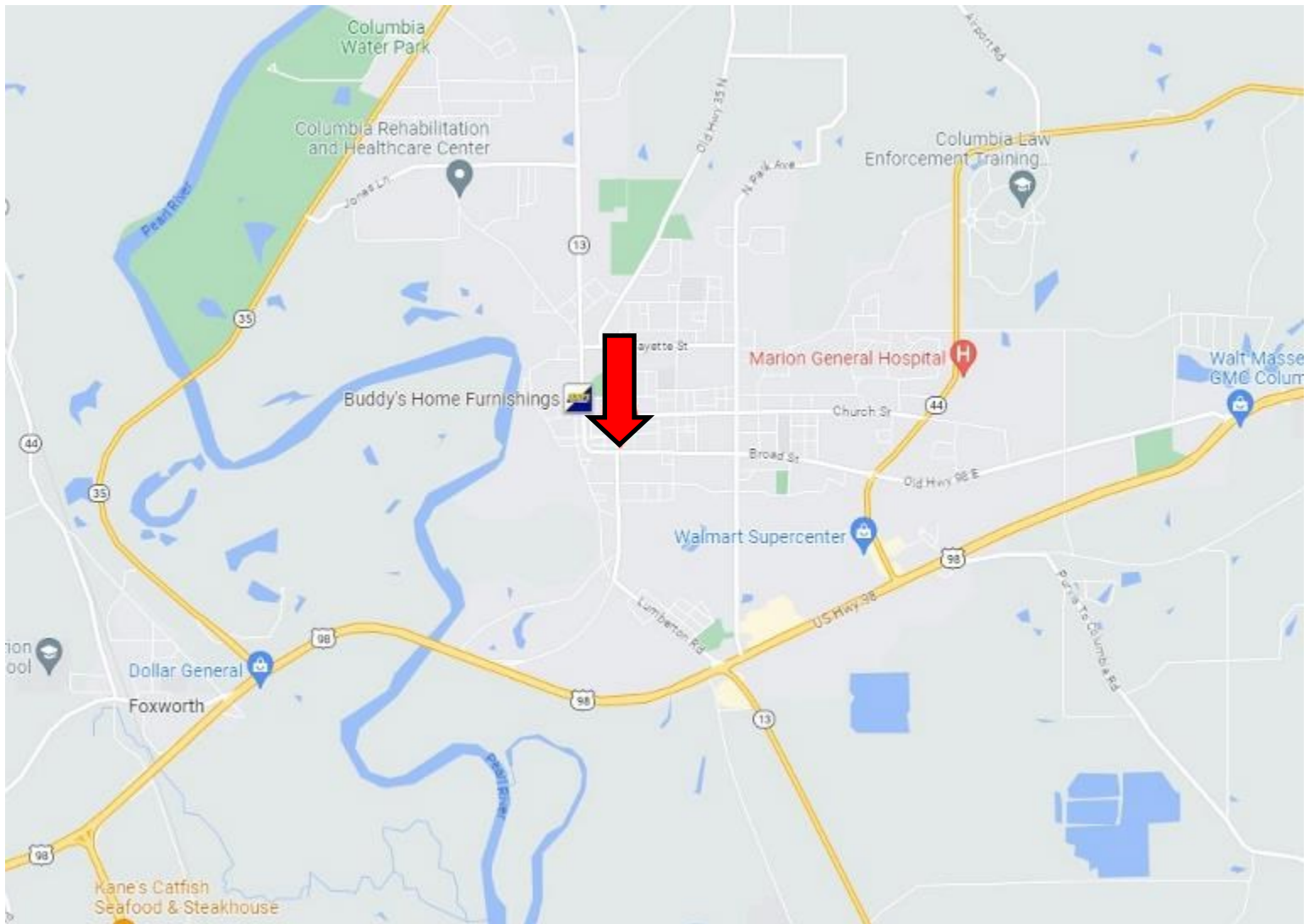
O: 601.898.2772 | C: 601.209.2310
Haley@TomSmithHomes.com

TomSmithLandandHomes.com

Information is believed to be accurate but not guaranteed.



DIRECTIONAL MAP



Directions from US-98 and MS-13 in Columbia, MS: Travel north on Lumberton Rd for .6 miles. Turn right onto S High School Ave. After .6 miles, the property will be on the right, on the corner of Broad St and High School Ave. Address: 403 Broad St., Columbia, MS 39429 [GOOGLE MAP LINK](#)



DANNY WILLOUGHBY
REALTOR®

O: 601.898.2772 | C: 601.720.9995
Danny@TomSmithLand.com



HALEY BELDEN
REALTOR®

O: 601.898.2772 | C: 601.209.2310
Haley@TomSmithHomes.com

TomSmithLandandHomes.com

Information is believed to be accurate but not guaranteed.

