

# 3 +/- Acre Hunting/Camp Retreat Adjacent to Tombigbee National Forest Choctaw County, MS



**\$96,000**

Look at this 3+/- acre campsite with three cabins, enclosed skinning shed, laundry shed, and camper hook-up, surrounded by beautiful old growth timber, and behind a locked gate! It is adjacent to Tombigbee National Forest and has access privileges. You can enjoy hunting in a large public hunting area with a private campsite and room for friends and family. There is a camper hook-up already on-site, and it is situated within minutes of Louisville or Ackerman amenities. The area around the camp is covered with beautiful hardwoods. Sit around the fire, read a book, take a hike or cook-out with hungry friends on your hidden retreat. Showings are by appointment only, call Michael to schedule yours today!



**MICHAEL  
HALFACRE**

MANAGING BROKER

Office: 662.268.6333

Cell: 662.242.4220

MHalfacre@TomSmithLand.com



**A Real Estate Expert You Can Trust**

TomSmithLandandHomes.com

Information is believed to be accurate but not guaranteed.

2011-2023  
BEST  
BROKERAGES

# Three Private Camp-houses Bring Friends!



Camphouse



UTV Shed and Laundry Shed



Camphouses



skinning/processing building



1 room building



3rd Camphouse

**MICHAEL HALFACRE**

MANAGING BROKER

Office: 662.268.6333

Cell: 662.242.4220

MHalfacre@TomSmithLand.com



**A Real Estate Expert You Can Trust**

TomSmithLandandHomes.com

Information is believed to be accurate but not guaranteed.

LiveReport  
2011-2023  
**BEST**  
BROKERAGES



- Solitude
- Natural Beauty
- Access To National Forest and Wildlife Management Area
- Hunting
- Fishing (Choctaw Lake)
- Privacy
- Multiple Use Year Round
- Close To Amenities
- Room For Friends



**MICHAEL HALFACRE**

MANAGING BROKER

Office: 662.268.6333

Cell: 662.242.4220

MHalfacre@TomSmithLand.com



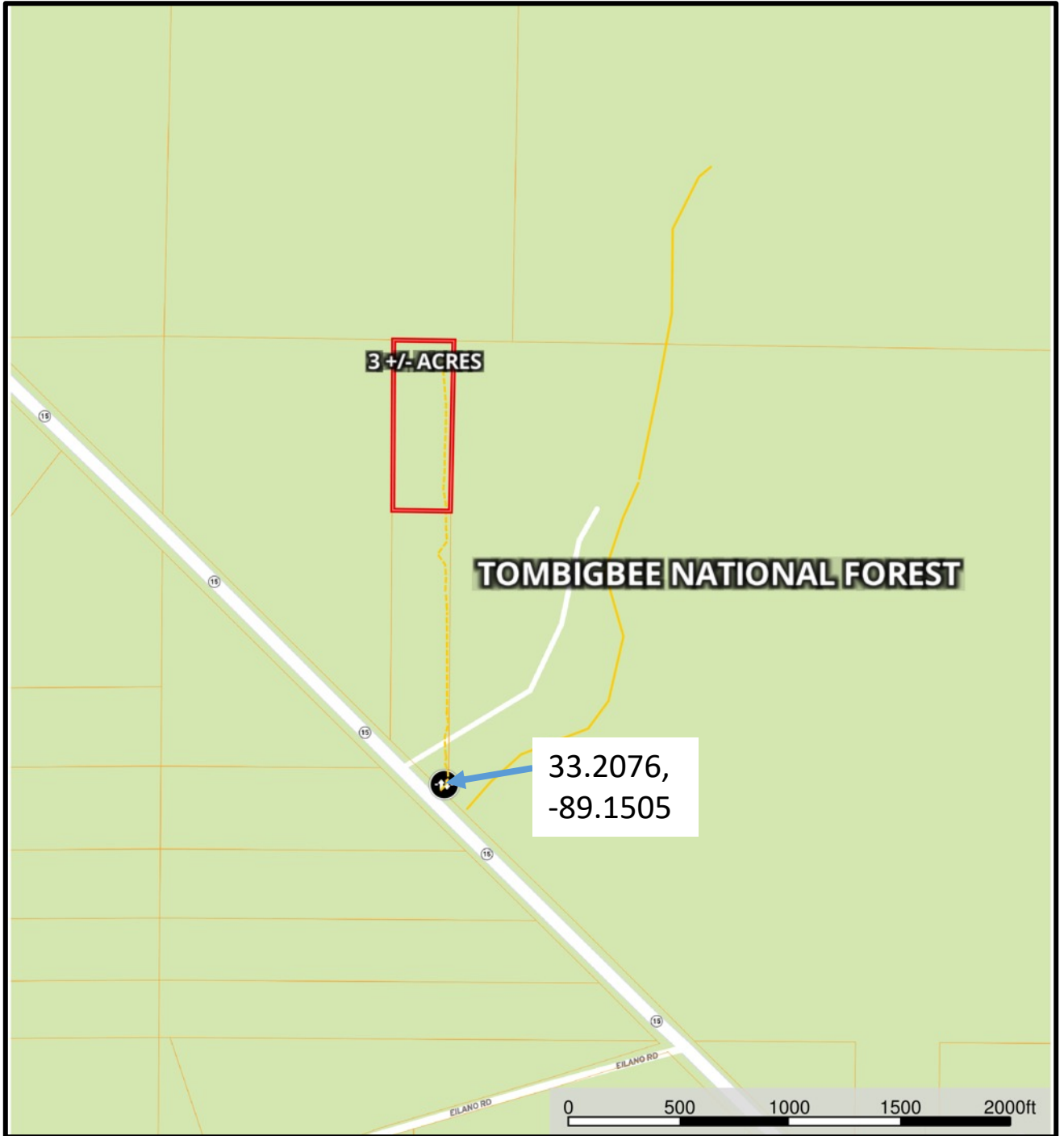
**A Real Estate Expert You Can Trust**

TomSmithLandandHomes.com

Information is believed to be accurate but not guaranteed.

2011-2023  
**BEST**  
BROKERAGES

## Ownership Map



**MICHAEL HALFACRE**

MANAGING BROKER

Office: 662.268.6333

Cell: 662.242.4220

MHalfacre@TomSmithLand.com



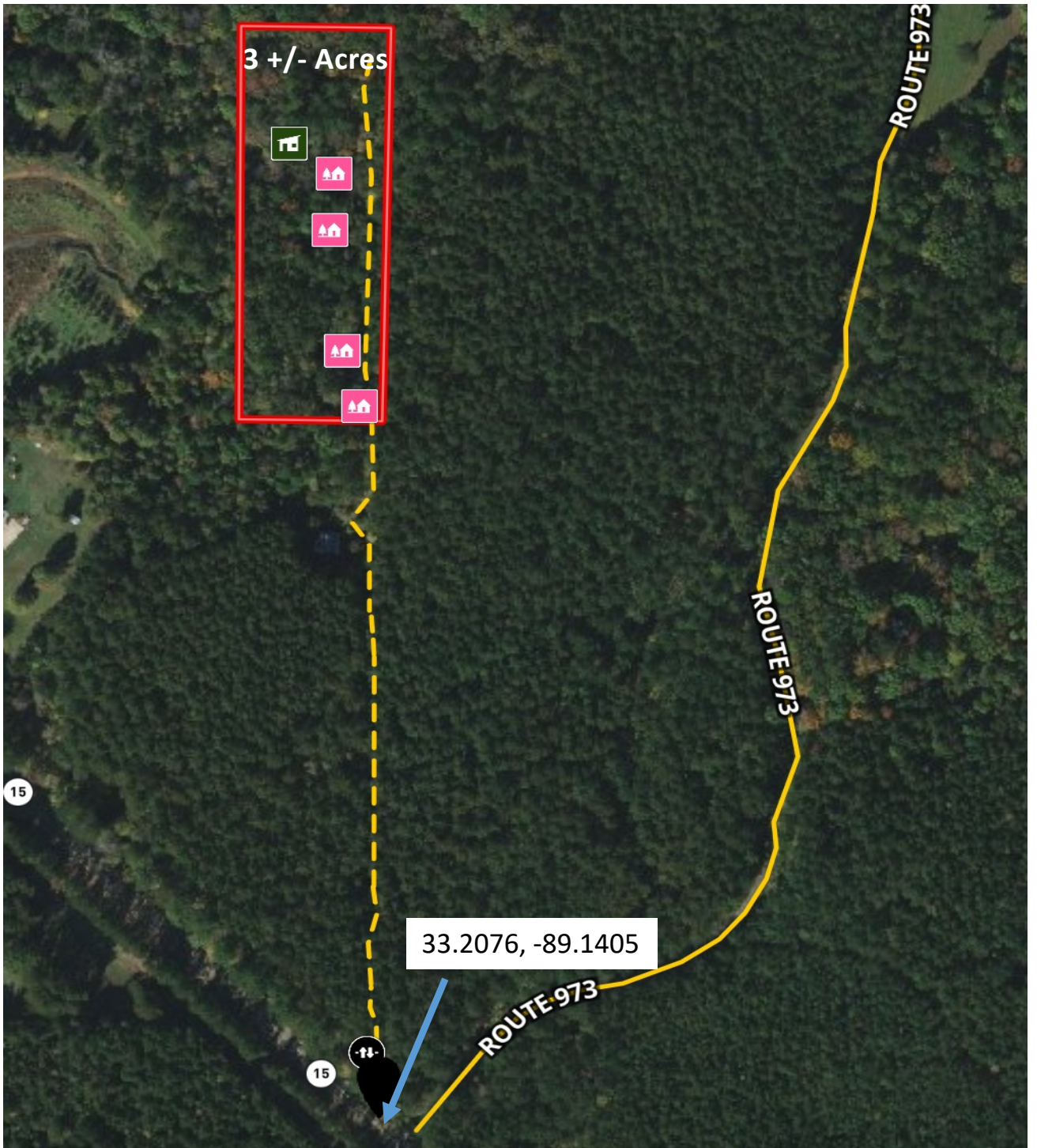
**A Real Estate Expert You Can Trust**

TomSmithLandandHomes.com

Information is believed to be accurate but not guaranteed.

2011-2023  
**BEST**  
BROKERAGES

# Aerial Photograph



## INTERACTIVE MAP LINK

**MICHAEL HALFACRE**

MANAGING BROKER

Office: 662.268.6333

Cell: 662.242.4220

MHalfacre@TomSmithLand.com



**A Real Estate Expert You Can Trust**

TomSmithLandandHomes.com

Information is believed to be accurate but not guaranteed.



# FEMA Flood Map



**MICHAEL HALFACRE**

MANAGING BROKER

Office: 662.268.6333

Cell: 662.242.4220

MHalfacre@TomSmithLand.com



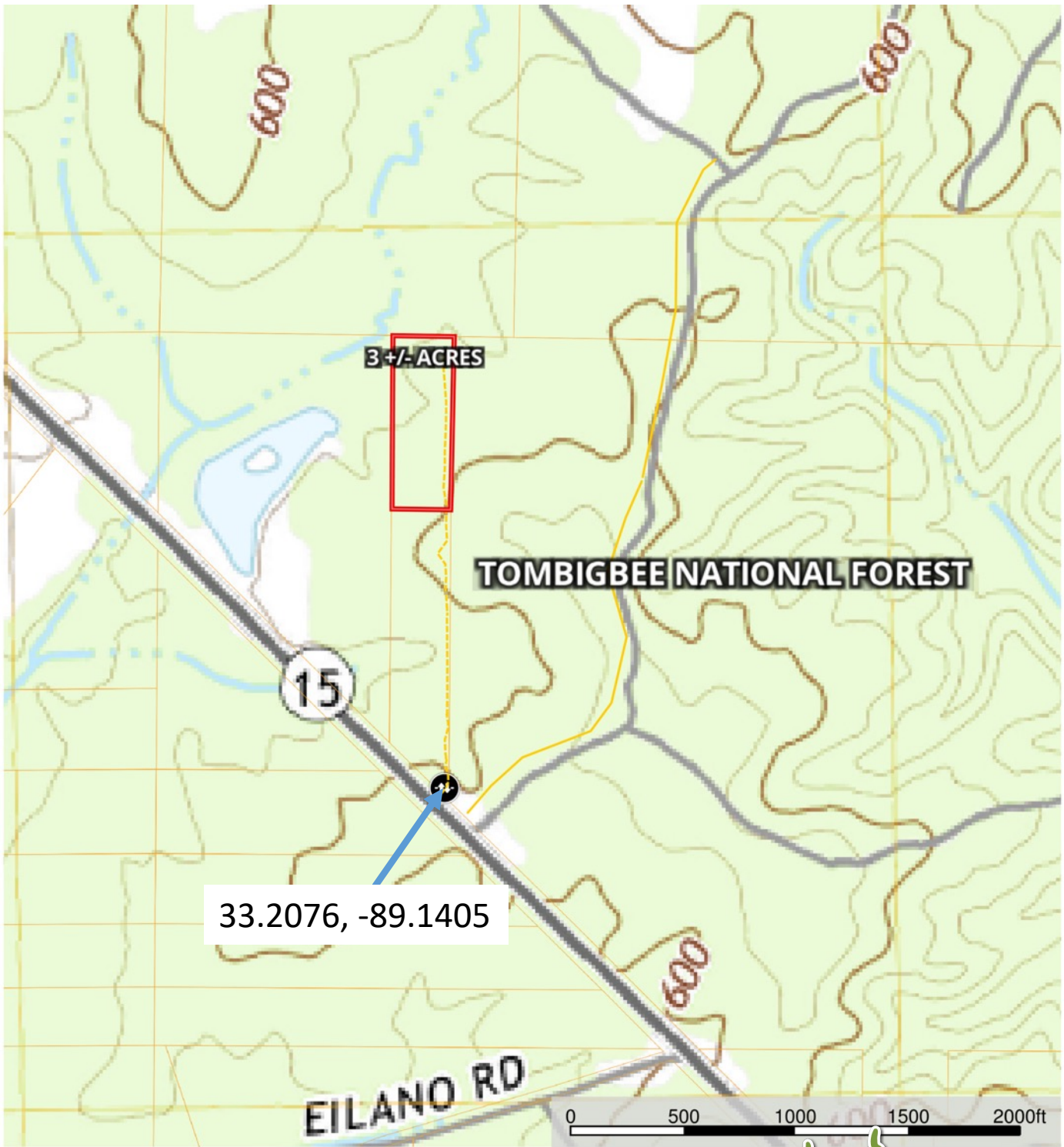
**A Real Estate Expert You Can Trust**

TomSmithLandandHomes.com

Information is believed to be accurate but not guaranteed.



# Topographic Map



**MICHAEL HALFACRE**

MANAGING BROKER

Office: 662.268.6333

Cell: 662.242.4220

MHalfacre@TomSmithLand.com



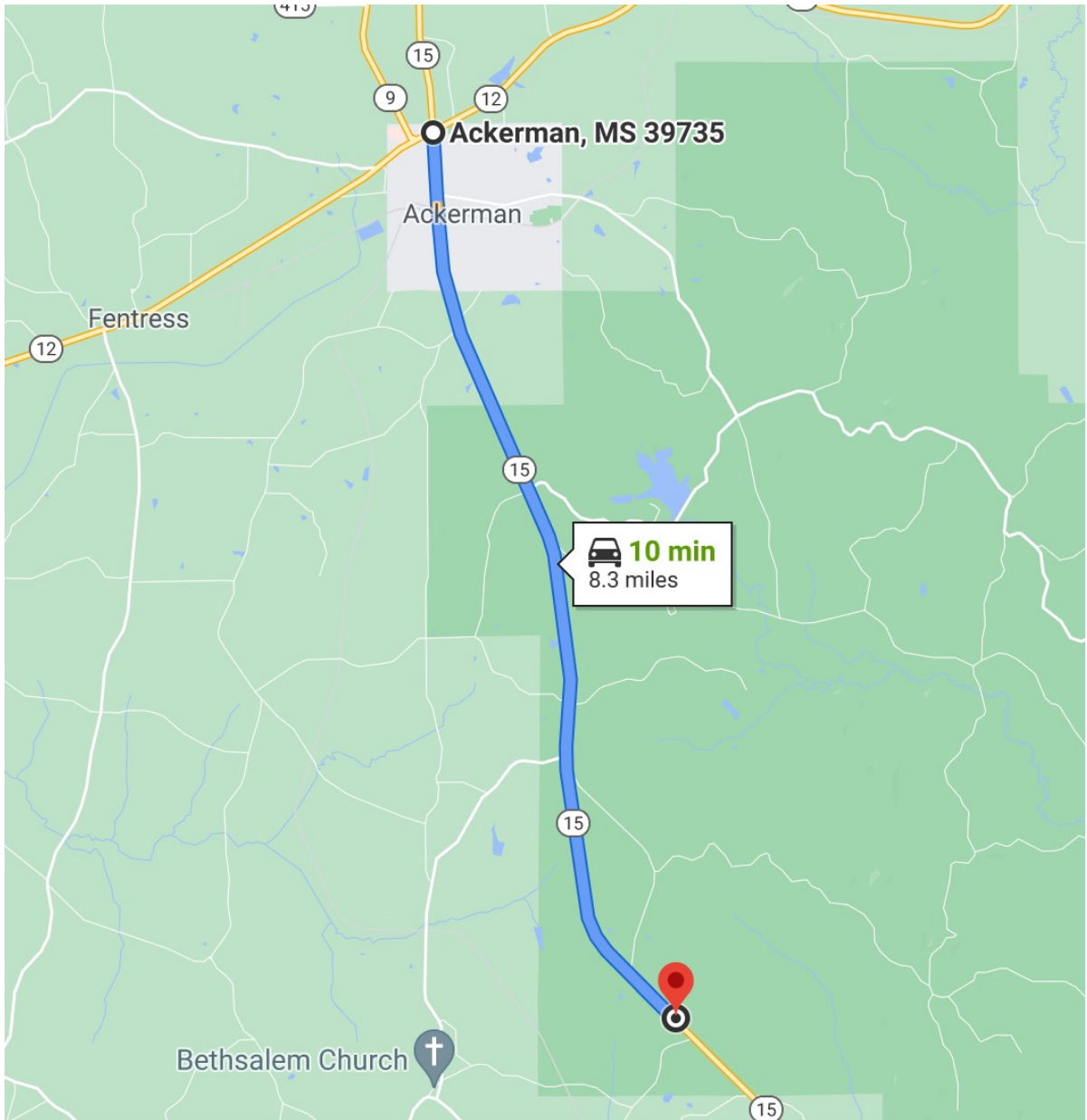
**A Real Estate Expert You Can Trust**

TomSmithLandandHomes.com

Information is believed to be accurate but not guaranteed.



## Directional Map



**Directions from intersection of MS-12 & MS 15 in Ackerman, MS;** Travel south on Hwy 15 for 8.3 miles and entrance is on the left (locked gate). Showings by appointment only; call Michael to set up yours today! [GOOGLE MAP LINK](#)



**MICHAEL  
HALFACRE**

MANAGING BROKER

Office: 662.268.6333

Cell: 662.242.4220

MHalfacre@TomSmithLand.com



**A Real Estate Expert You Can Trust**

TomSmithLandandHomes.com

Information is believed to be accurate but not guaranteed.

2011-2023  
BEST  
BROKERAGES