

3.73± ACRE RESIDENTIAL LOT

in Washington Parish, LA



\$52,000

Check out this 3.73+/- acre residential lot in Washington Parish, less than 15 minutes from downtown Franklinton, LA. This property offers quiet private seclusion and is ready for someone's dream home to be built! Take a look today! Call Preston Smith for a private showing!

Directions from the intersection of LA-16 and LA-25 in Franklinton: Travel west on LA-16 for 4 miles. Turn left onto Kat Kaw Rd and travel 1.5 miles. Turn right onto Falcon Rd. In .2 miles, the property will be on the right.

[Google Maps](#)

CLIF
CANNON
REALTOR®

Office: 601.990.5070

Cell: 601.565.1070

Clif@TomSmithLand.com



A Real Estate Expert You Can Trust

TomSmithLandandHomes.com

Information is believed to be accurate but not guaranteed.





CLIF CANNON

REALTOR®

Office: 601.990.5070

Cell: 601.565.1070

Clif@TomSmithLand.com



A Real Estate Expert You Can Trust
TomSmithLandandHomes.com

Information is believed to be accurate but not guaranteed.



Aerial Map



CLIF CANNON

REALTOR®

Office: 601.990.5070

Cell: 601.565.1070

Clif@TomSmithLand.com



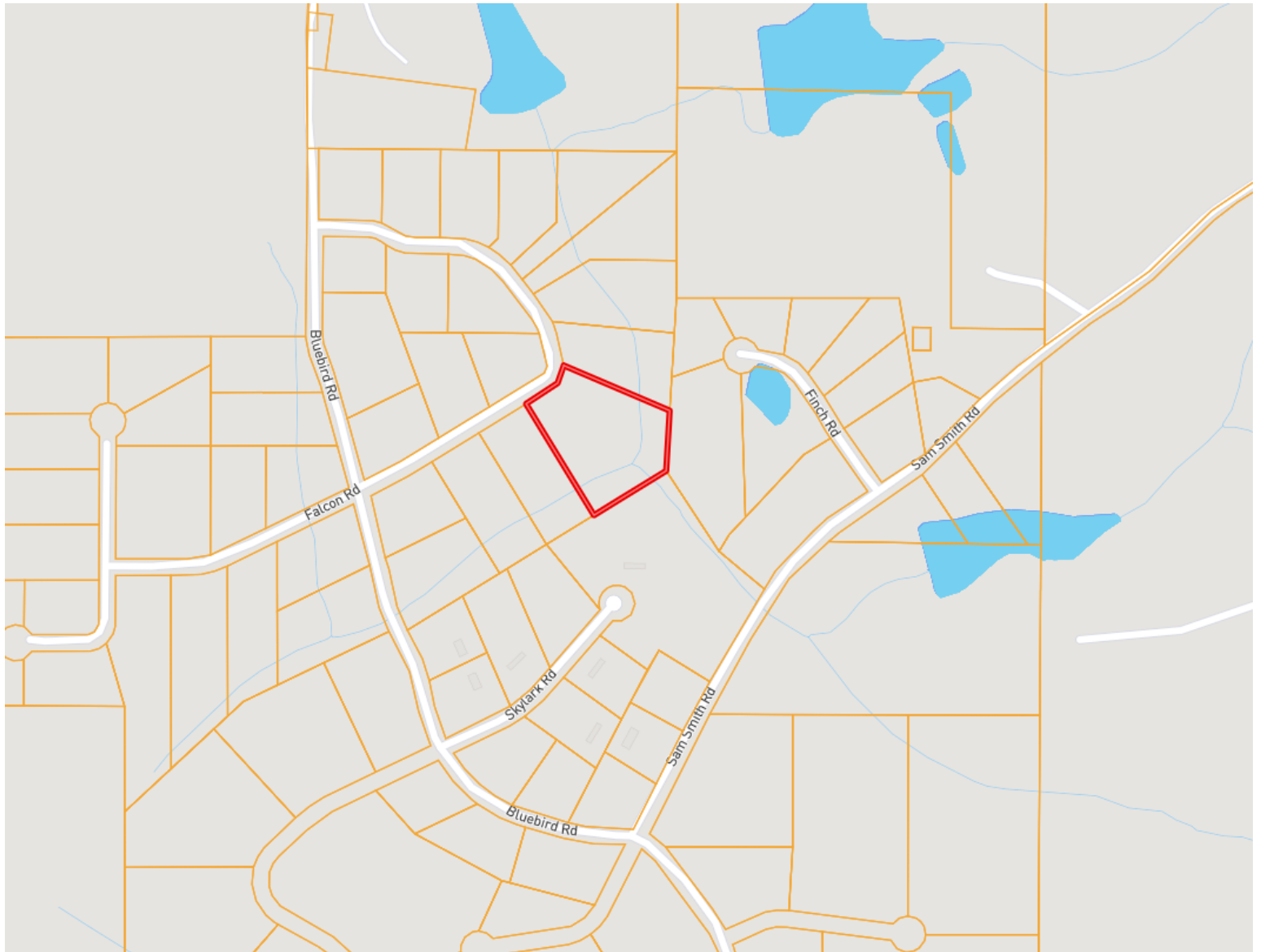
A Real Estate Expert You Can Trust

TomSmithLandandHomes.com

Information is believed to be accurate but not guaranteed.



Ownership Map



CLIF CANNON

REALTOR®

Office: 601.990.5070

Cell: 601.565.1070

Clif@TomSmithLand.com



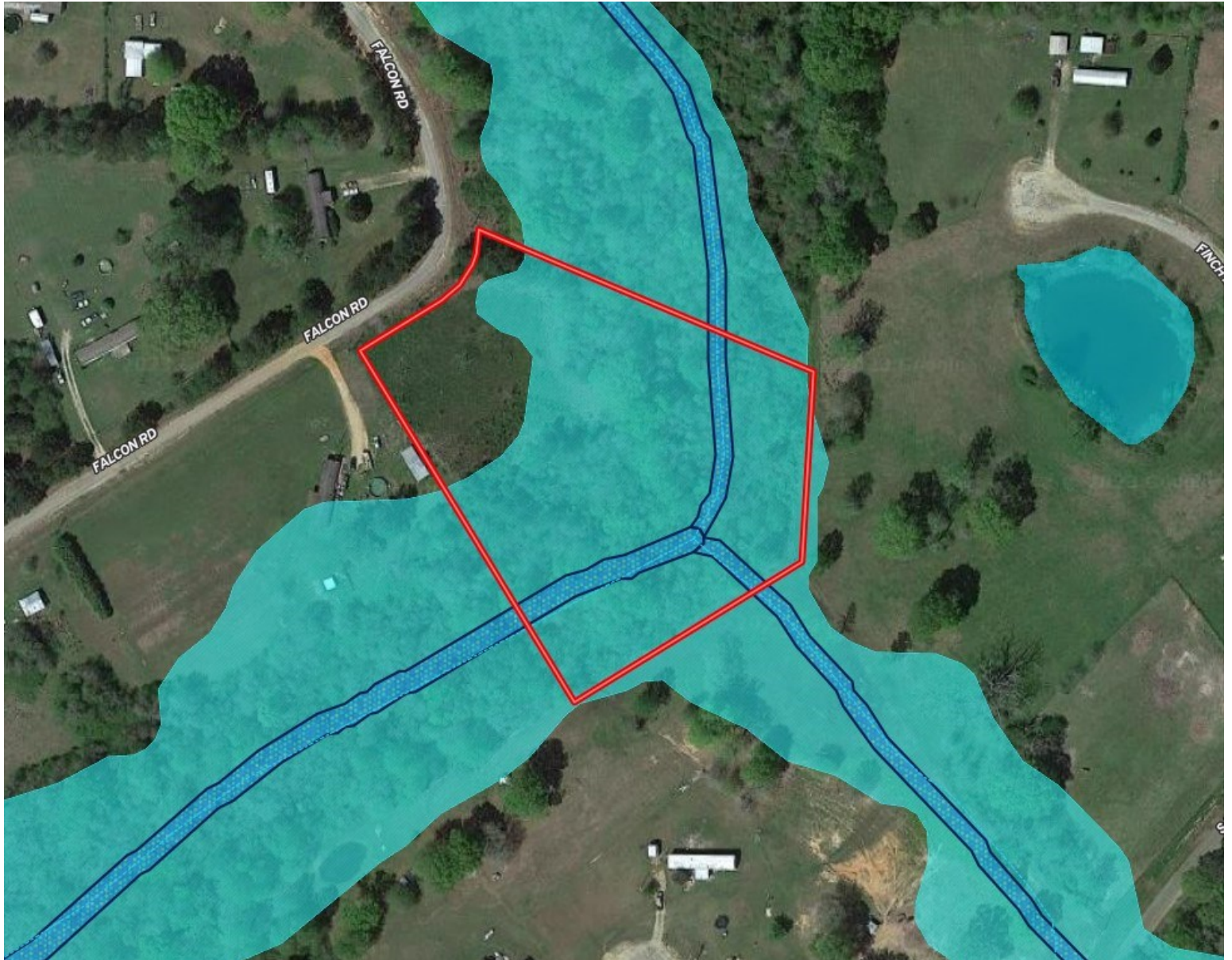
A Real Estate Expert You Can Trust

TomSmithLandandHomes.com

Information is believed to be accurate but not guaranteed.



Flood Map



CLIF CANNON

REALTOR®

Office: 601.990.5070

Cell: 601.565.1070

Clif@TomSmithLand.com



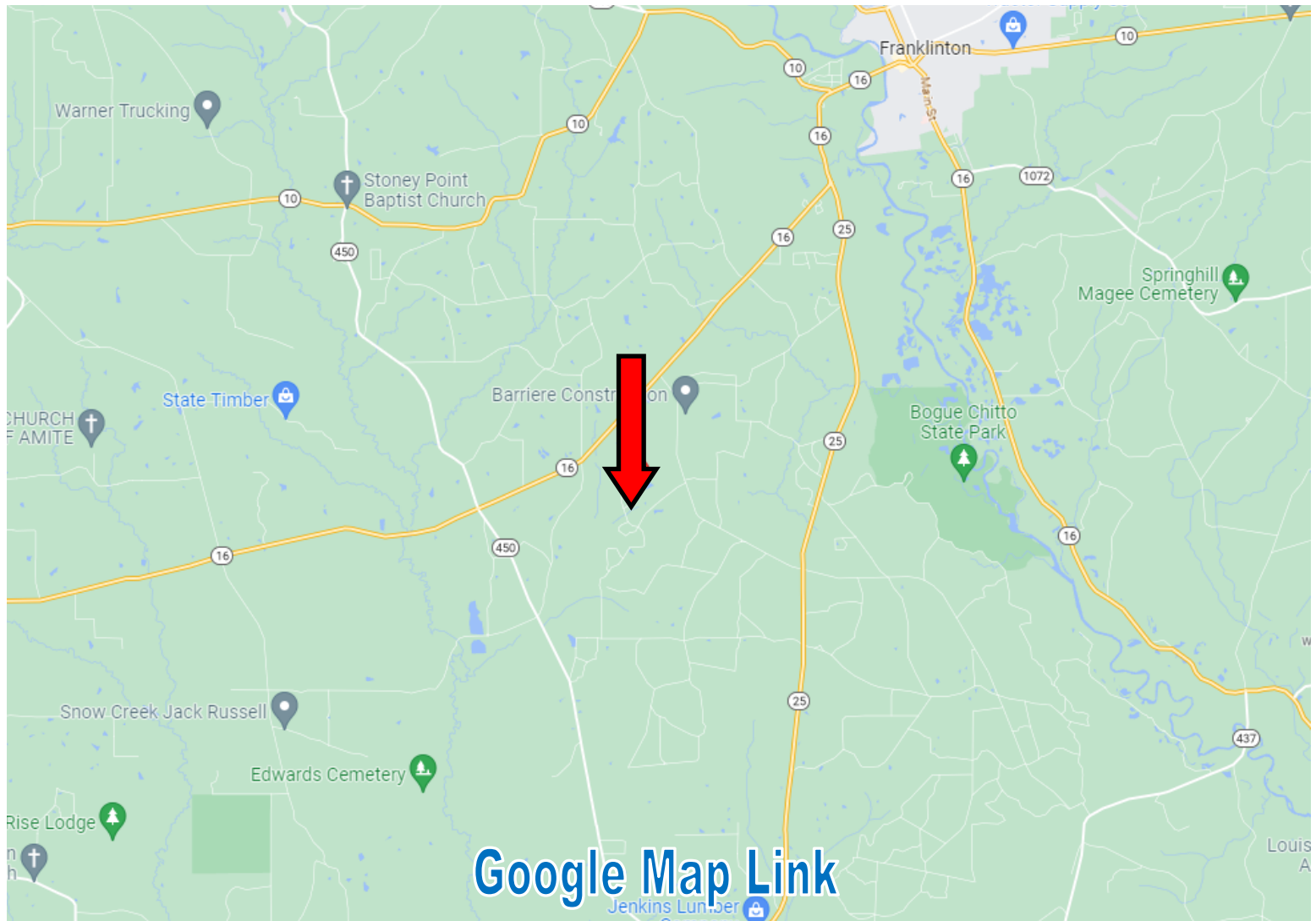
A Real Estate Expert You Can Trust

TomSmithLandandHomes.com

Information is believed to be accurate but not guaranteed.



Directional Map



Directions from the intersection of LA-16 and LA-25 in Franklinton: Travel west on LA-16 for 4 miles. Turn left onto Kat Kaw Rd and travel 1.5 miles. Turn right onto Falcon Rd. In .2 miles, the property will be on the right.

CLIF CANNON

REALTOR®

Office: 601.990.5070

Cell: 601.565.1070

Clif@TomSmithLand.com



A Real Estate Expert You Can Trust

TomSmithLandandHomes.com

Information is believed to be accurate but not guaranteed.

