

EXCELLENT HUNTING TRACT

12.66+/- Acres in Amite County, MS



Welcome to your new, secluded hunting tract in Amite County, MS. This 12.66± acre property is loaded with hardwoods and plenty of deer signs! A small creek runs through the west side of the property and provides an excellent water source for local wildlife. There is a small unfinished cabin on the property that would make for a great little hunting camp. Come look at this hunting spot before the season starts! Call Chas for a private showing today!

Directions from the intersection of MS-24 and MS-567 in Liberty, MS: Travel north on MS-567 for 7.2 miles. Take a sharp left onto King Rd. Travel .7 miles, then turn left at the 1st cross street onto Wilkinson Rd. After 1.3 miles, the property access will be on the right. [GOOGLE MAP LINK](#)



**CHAD
WILSON**
REALTOR®

Office: 601.898.2772

Cell: 601.750.1970

Chad@TomSmithLand.com



A Real Estate Expert You Can Trust

TomSmithLandandHomes.com

Information is believed to be accurate but not guaranteed.





CHAD WILSON

REALTOR®

Office: 601.898.2772

Cell: 601.750.1970

Chad@TomSmithLand.com



A Real Estate Expert You Can Trust

TomSmithLandandHomes.com

Information is believed to be accurate but not guaranteed.





CHAD WILSON

REALTOR®

Office: 601.898.2772

Cell: 601.750.1970

Chad@TomSmithLand.com



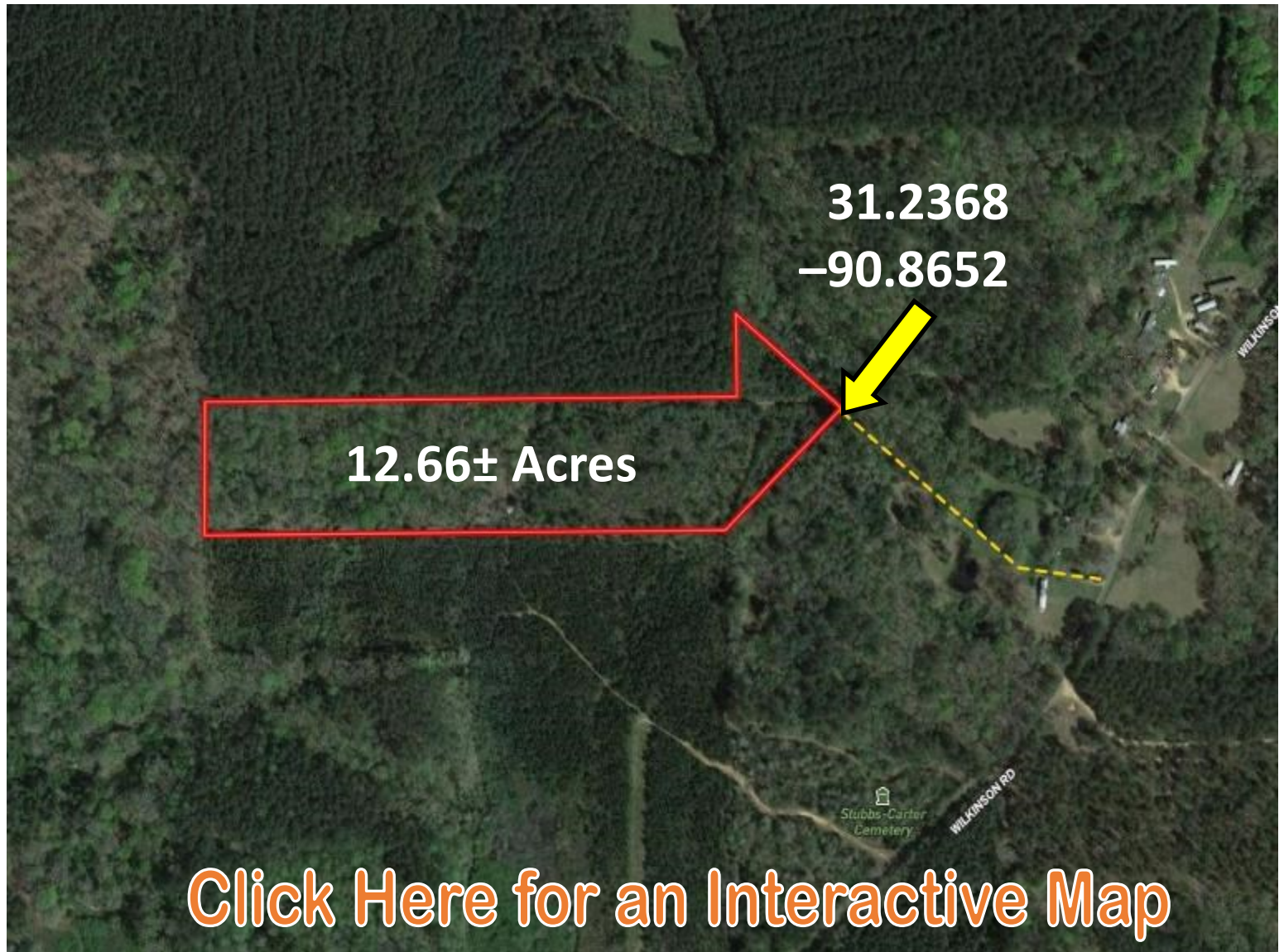
A Real Estate Expert You Can Trust

TomSmithLandandHomes.com

Information is believed to be accurate but not guaranteed.



Aerial Map



[Click Here for an Interactive Map](#)

CHAD WILSON

REALTOR®

Office: 601.898.2772

Cell: 601.750.1970

Chad@TomSmithLand.com

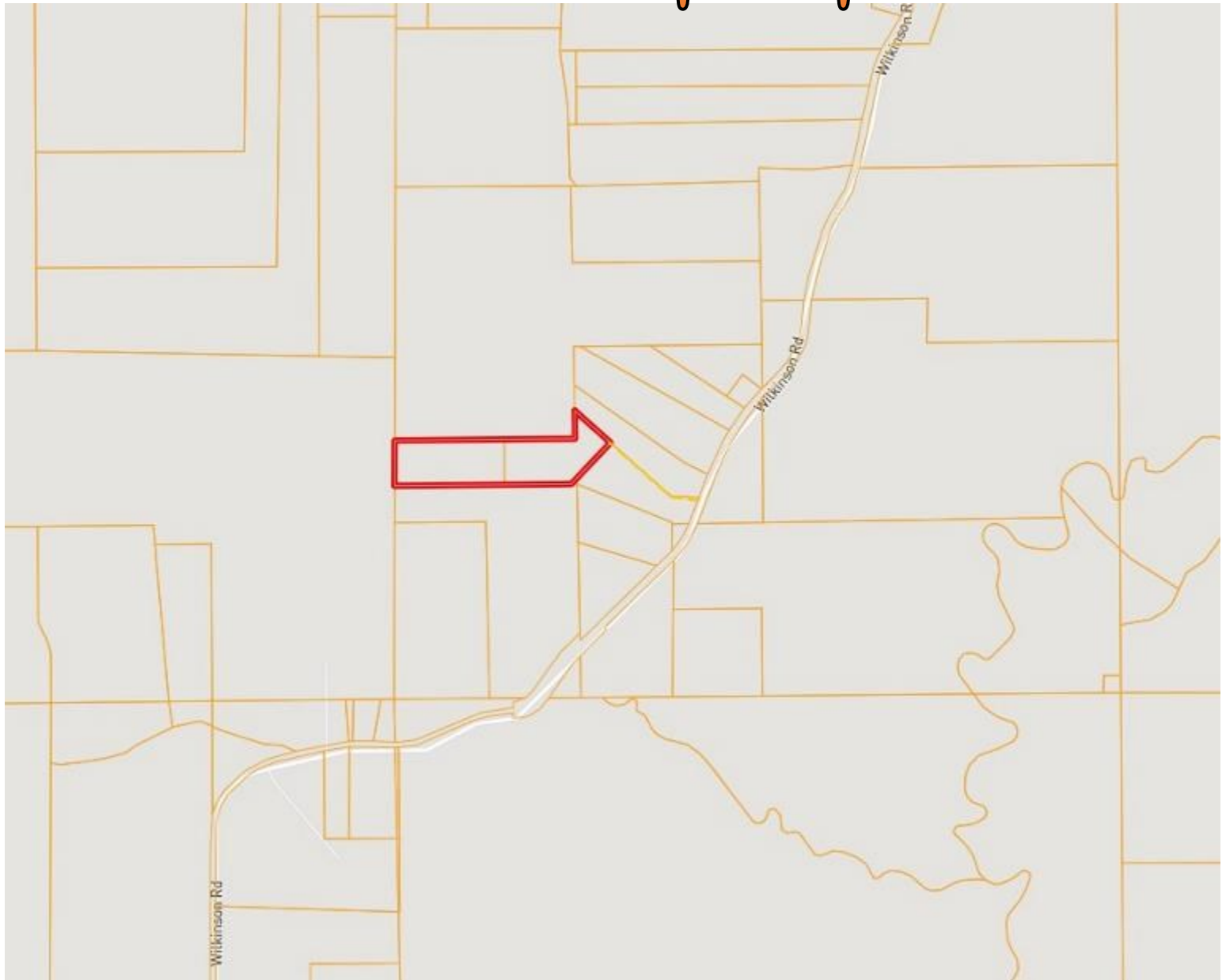


A Real Estate Expert You Can Trust
TomSmithLandandHomes.com

Information is believed to be accurate but not guaranteed.



Ownership Map



CHAD WILSON

REALTOR®

Office: 601.898.2772

Cell: 601.750.1970

Chad@TomSmithLand.com



A Real Estate Expert You Can Trust

TomSmithLandandHomes.com

Information is believed to be accurate but not guaranteed.



Topo Map



CHAD WILSON

REALTOR®

Office: 601.898.2772

Cell: 601.750.1970

Chad@TomSmithLand.com



A Real Estate Expert You Can Trust

TomSmithLandandHomes.com

Information is believed to be accurate but not guaranteed.



Soil Map

Code	Description	Acres	%	CPI	NCCPI	CAP	?
SaE	Saffell gravelly sandy loam, 12 to 30 percent slopes	5.59	44.68%	-	31	7e	?
PrB	Providence silt loam, 2 to 5 percent slopes	3.48	27.82%	-	49	2e	?
Ar	Ariel silt loam, 0 to 2 percent slopes, occasionally flooded	3.44	27.5%	-	53	2w	?



CHAD WILSON

REALTOR®

Office: 601.898.2772

Cell: 601.750.1970

Chad@TomSmithLand.com



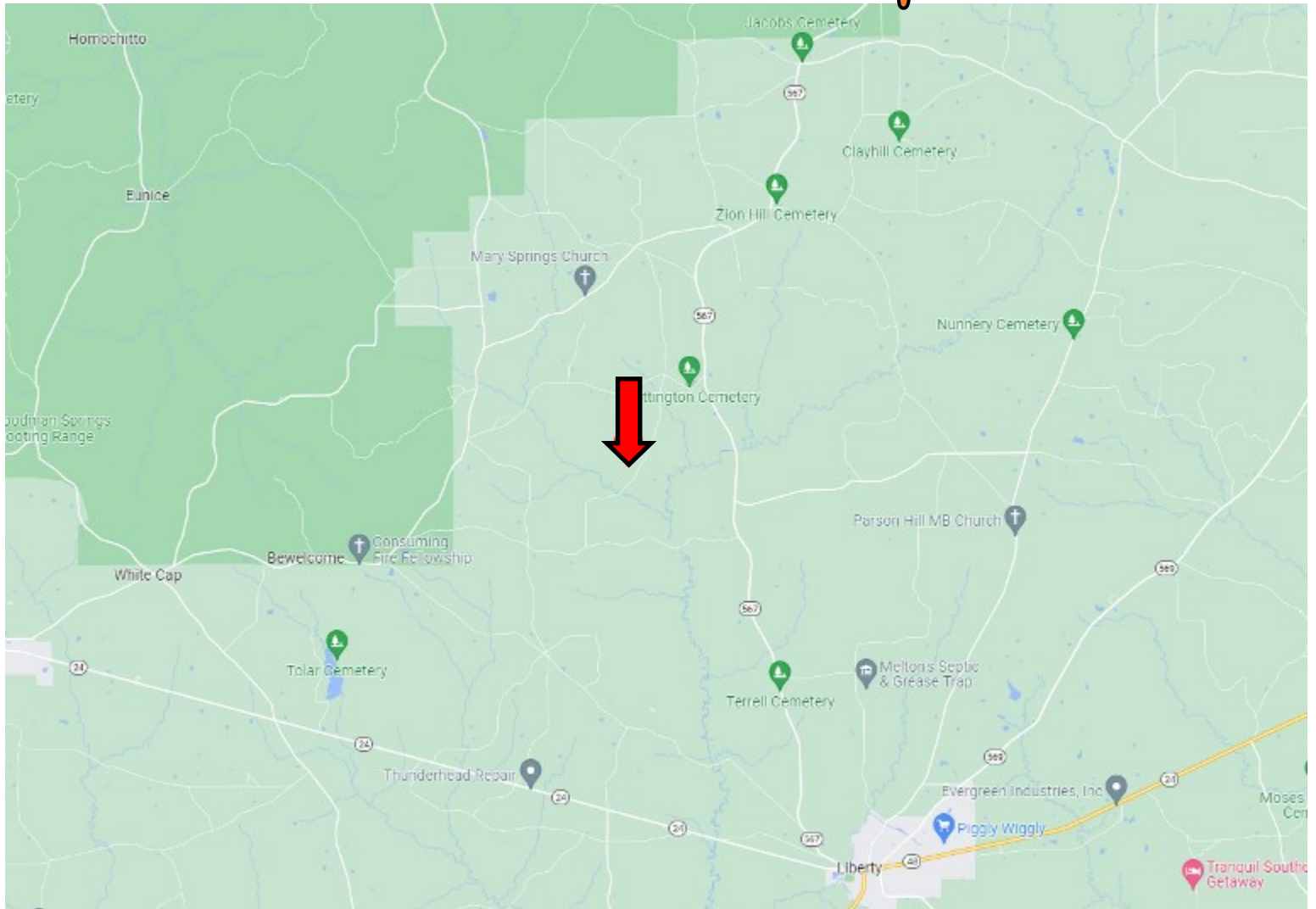
A Real Estate Expert You Can Trust

TomSmithLandandHomes.com

Information is believed to be accurate but not guaranteed.



Directional Map



Directions from the intersection of MS-24 and MS-567 in Liberty, MS: Travel north on MS-567 for 7.2 miles. Take a sharp left onto King Rd. Travel .7 miles, then turn left at the 1st cross street onto Wilkinson Rd. After 1.3 miles, the property access will be on the right. [Google Map Link](#)



**CHAD
WILSON**
REALTOR®

Office: 601.898.2772
Cell: 601.750.1970
Chad@TomSmithLand.com



A Real Estate Expert You Can Trust

TomSmithLandandHomes.com

Information is believed to be accurate but not guaranteed.

