

# Beautiful Oktibbeha County Home

## 927 STEELE ROAD STARKVILLE MS, 39759



**\$499,000**

Are you looking for a beautiful house with private lake access? Well, here it is! This four-bedroom, three-bathroom Oktibbeha County home has plenty to offer. When you walk in the front door, you are greeted by a large family room overlooking the private lake. A large kitchen with modern finishes and a breakfast nook flowing into the living room gives you an open-concept area for guests and all sorts of entertainment. The back porch has a firepit to enjoy those cool evenings watching the sunset over the lake. The three-car garage has all the storage you could ask for, but if you need more, there is plenty of attic space too! This property is located on a 2.93+/- acre lot and is only 7.4 miles from Mississippi State University! To schedule a private showing, call or text Walker!

**Directions From Mississippi State University:** Travel northwest on Russell Street/Stone Boulevard toward Bost Drive for .3 miles. Turn right onto MS-12 E and travel 1.8 miles. Turn left onto East Garrard Road and travel .3 miles. Turn right onto Old West Point Road and travel 3.5 miles. Turn left onto Steele Road. After .9 miles, the house will be on your right. [GOOGLE MAP LINK](#)



**WALKER  
TRANUM**  
REALTOR®

Office: 662.268.6333

Cell: 662.769.1442

Walker@TomSmithHomes.com



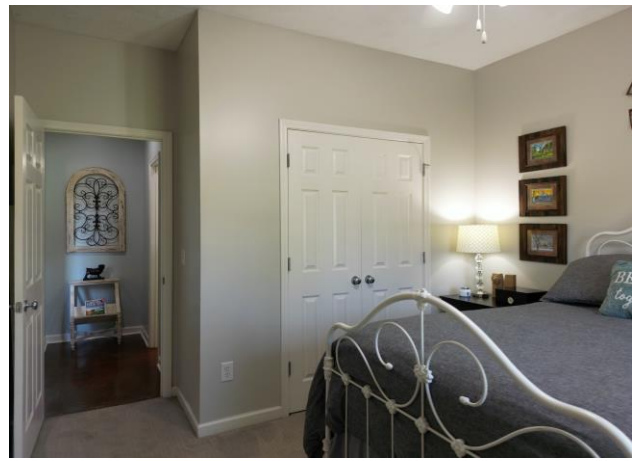
**A Real Estate Expert You Can Trust**

TomSmithLandandHomes.com

Information is believed to be accurate but not guaranteed.







**WALKER  
TRANUM**  
REALTOR®

Office: 662.268.6333

Cell: 662.769.1442

Walker@TomSmithHomes.com



**A Real Estate Expert You Can Trust**

TomSmithLandandHomes.com

Information is believed to be accurate but not guaranteed.







**WALKER  
TRANUM**  
REALTOR®

Office: 662.268.6333

Cell: 662.769.1442

Walker@TomSmithHomes.com



**A Real Estate Expert You Can Trust**

TomSmithLandandHomes.com

Information is believed to be accurate but not guaranteed.





**WALKER  
TRANUM**  
REALTOR®

Office: 662.268.6333

Cell: 662.769.1442

Walker@TomSmithHomes.com



**A Real Estate Expert You Can Trust**

TomSmithLandandHomes.com

Information is believed to be accurate but not guaranteed.







**WALKER  
TRANUM**  
REALTOR®

Office: 662.268.6333

Cell: 662.769.1442

Walker@TomSmithHomes.com



**A Real Estate Expert You Can Trust**

TomSmithLandandHomes.com

Information is believed to be accurate but not guaranteed.





# Aerial Map



Click [Here](#) for Interactive Link



**WALKER  
TRANUM**  
REALTOR®

Office: 662.268.6333  
Cell: 662.769.1442

Walker@TomSmithHomes.com



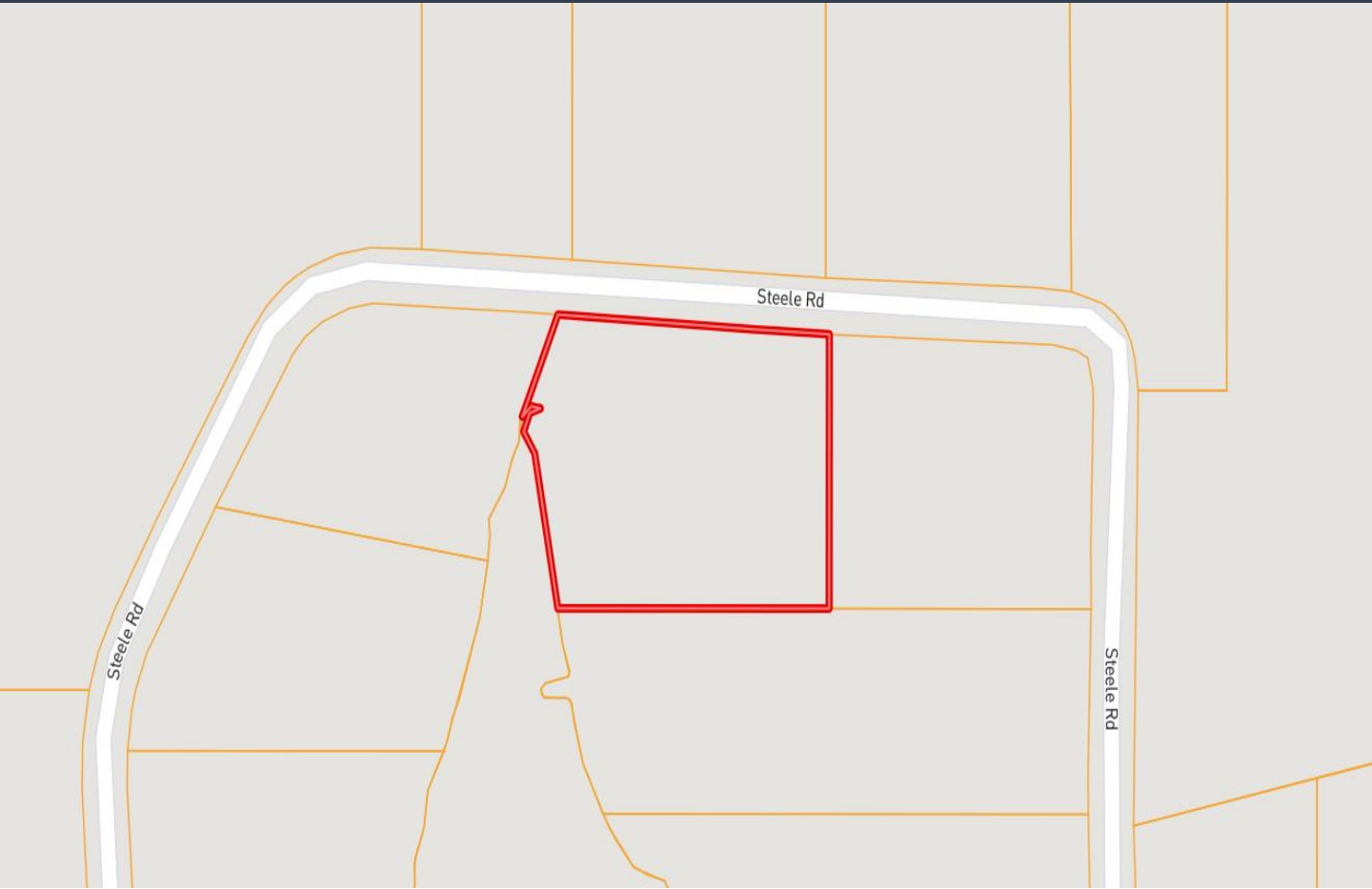
**A Real Estate Expert You Can Trust**

TomSmithLandandHomes.com

Information is believed to be accurate but not guaranteed.

2011-2023  
BEST  
BROKERAGES

# Ownership Map



**WALKER  
TRANUM**  
REALTOR®

Office: 662.268.6333  
Cell: 662.769.1442

[Walker@TomSmithHomes.com](mailto:Walker@TomSmithHomes.com)



**A Real Estate Expert You Can Trust**

[TomSmithLandandHomes.com](http://TomSmithLandandHomes.com)

Information is believed to be accurate but not guaranteed.





# Flood Map



**WALKER  
TRANUM**  
REALTOR®

Office: 662.268.6333  
Cell: 662.769.1442

[Walker@TomSmithHomes.com](mailto:Walker@TomSmithHomes.com)



**A Real Estate Expert You Can Trust**

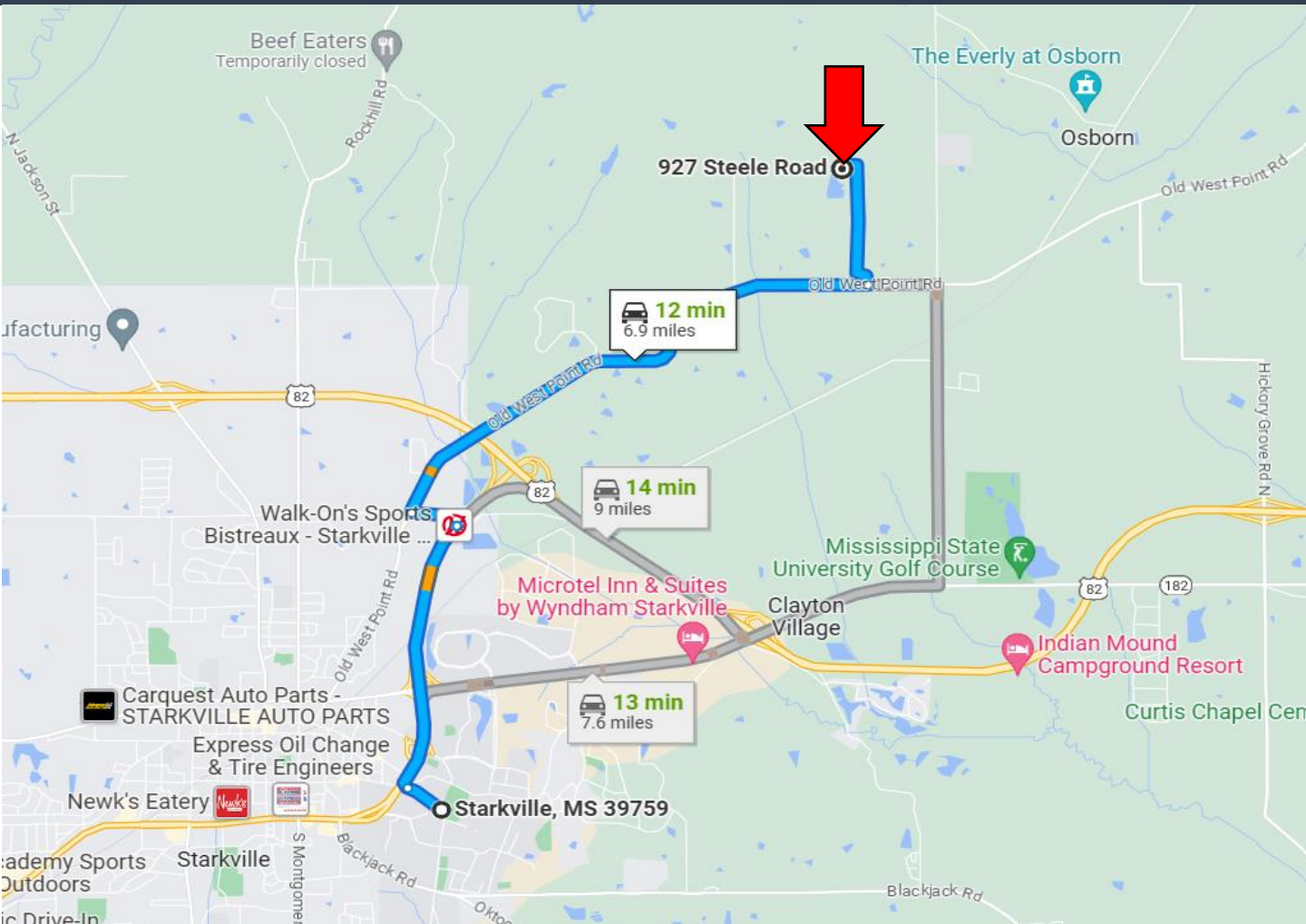
[TomSmithLandandHomes.com](http://TomSmithLandandHomes.com)

Information is believed to be accurate but not guaranteed.

2011-2023  
**BEST**  
BROKERAGES



# Directional Map



**Directions From Mississippi State University:** Travel northwest on Russell Street/ Stone Boulevard toward Bost Drive for .3 miles. Turn right onto MS-12 E and travel 1.8 miles. Turn left onto East Garrard Road and travel .3 miles. Turn right onto Old West Point Road and travel 3.5 miles. Turn left onto Steele Road. After .9 miles, the house will be on your right. [GOOGLE MAP LINK](#)



**WALKER  
TRANUM**  
REALTOR®

Office: 662.268.6333

Cell: 662.769.1442

Walker@TomSmithHomes.com



**A Real Estate Expert You Can Trust**

TomSmithLandandHomes.com

Information is believed to be accurate but not guaranteed.

