

# 13.37± Acre Recreational Tract Madison County, Mississippi

**\$46,795**

Welcome to your new 13.37± Recreational Tract in Madison County, MS. This hidden gem is in the charming town of Sharon, Mississippi. This expansive recreational haven spans over 13.37± acres of natural beauty and offers a perfect blend of outdoor activities, tranquility, and picturesque landscapes. Utilities are also available at the road, making this property ideal for anyone wanting to build their dream home in the country but still close enough to all the amenities of the city. Give Allyson a call to schedule your showing today!

Directions from the intersection of Hwy 43 and Hwy 16 in Canton, MS: Travel Hwy 43 N for 5.5 miles. Turn left onto Sharon Rd. After 0.2 miles, the entrance to the property will be on your left.

[Google Map Link](#)



*Call me  
today!*

**ALLYSON MIZE**, REALTOR®  
Allyson@TomSmithLand.com  
601.898.2772 **office** | 662.607.1703 **cell**



**TomSmithLandandHomes.com**

Information is believed to be accurate but not guaranteed.





*Call me  
today!*

**ALLYSON MIZE**, REALTOR®

Allyson@TomSmithLand.com

601.898.2772 office | 662.607.1703 cell



Expect More. Get More.

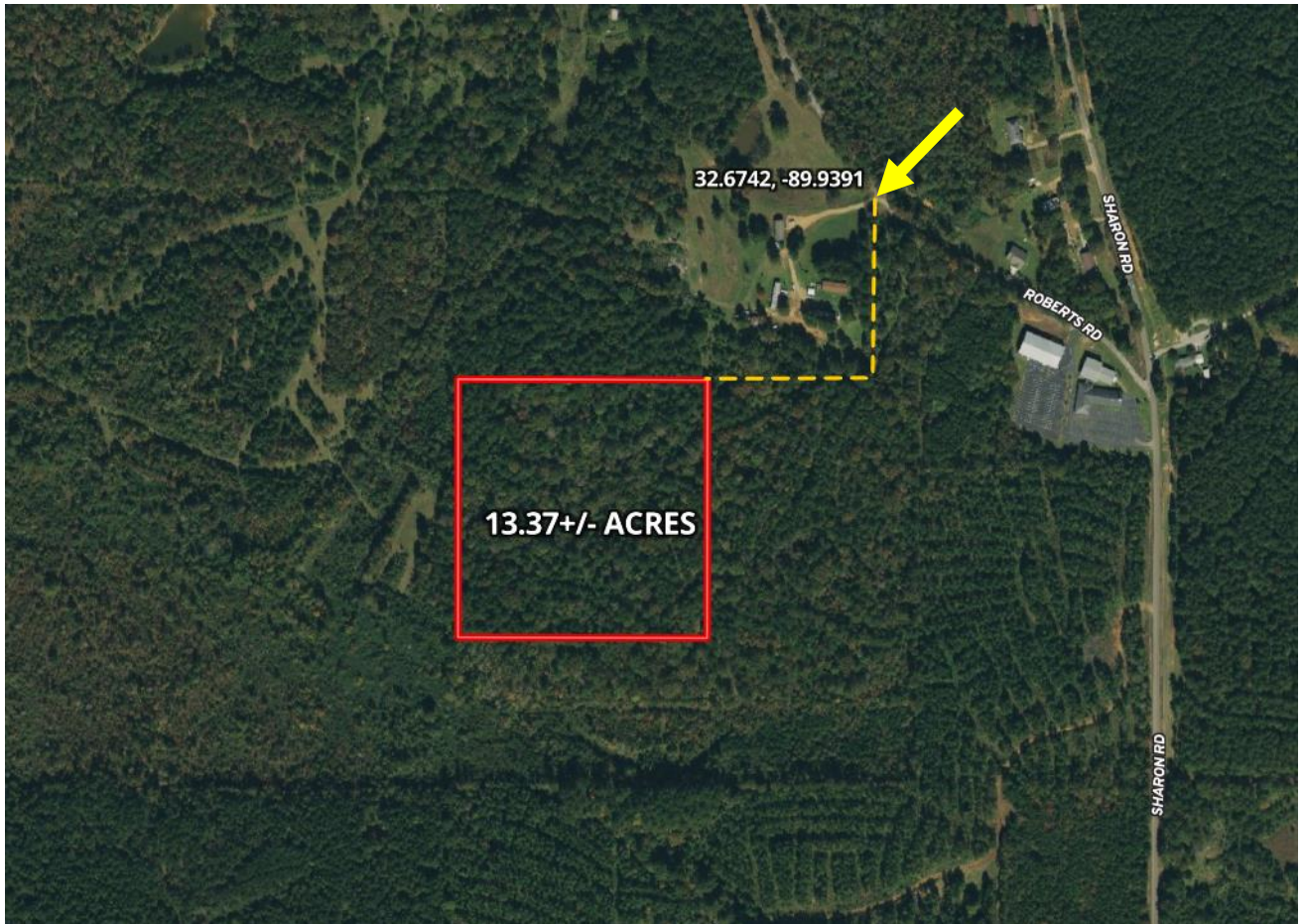
**TomSmithLandandHomes.com**

Information is believed to be accurate but not guaranteed.





# AERIAL MAP



[Click Here For Interactive Map](#)

*Call me  
today!*

**ALLYSON MIZE**, REALTOR®  
Allyson@TomSmithLand.com  
601.898.2772 office | 662.607.1703 cell

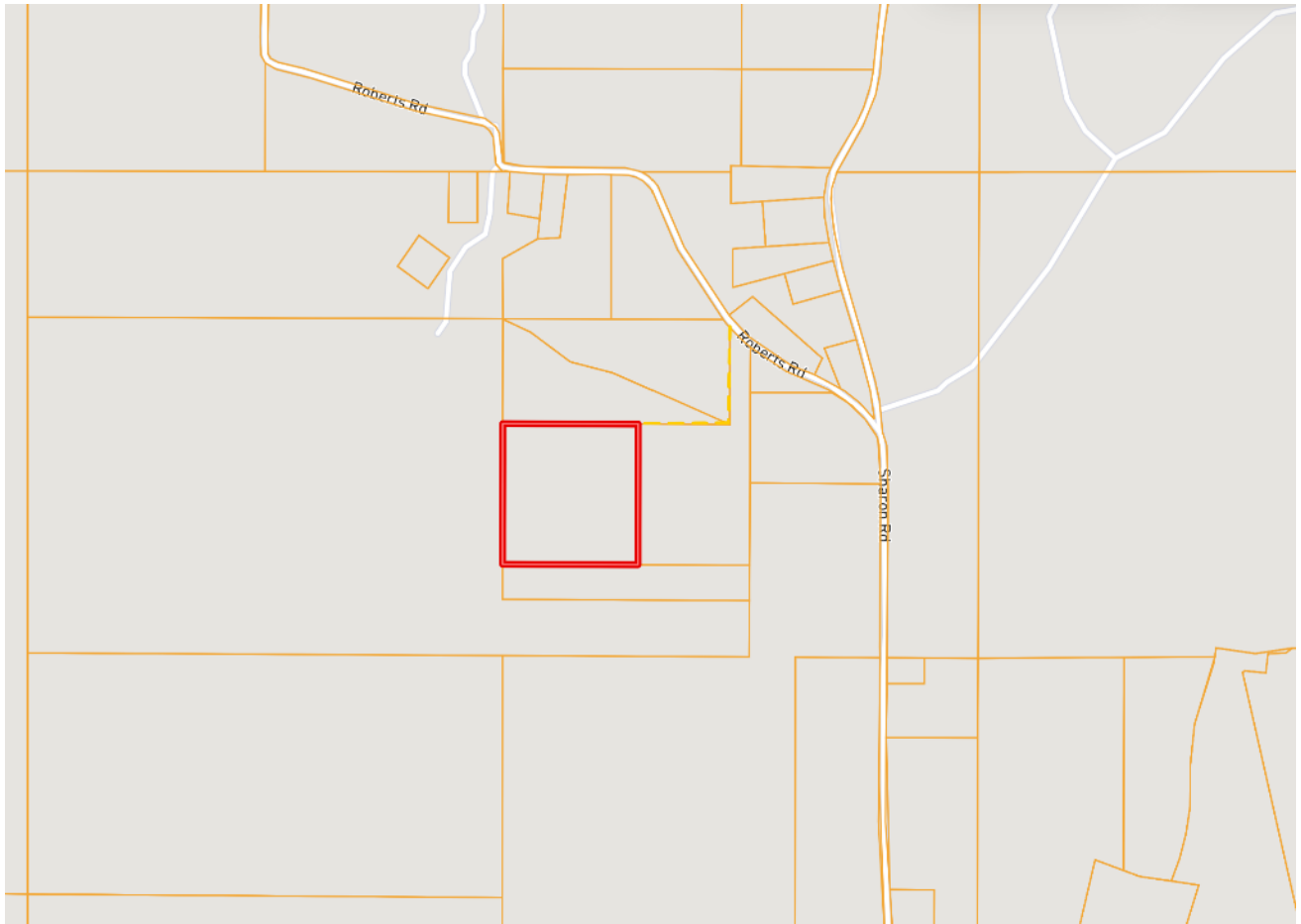


**TomSmithLandandHomes.com**

Information is believed to be accurate but not guaranteed.



# OWNERSHIP MAP



*Call me  
today!*

**ALLYSON MIZE**, REALTOR®

Allyson@TomSmithLand.com

601.898.2772 office | 662.607.1703 cell



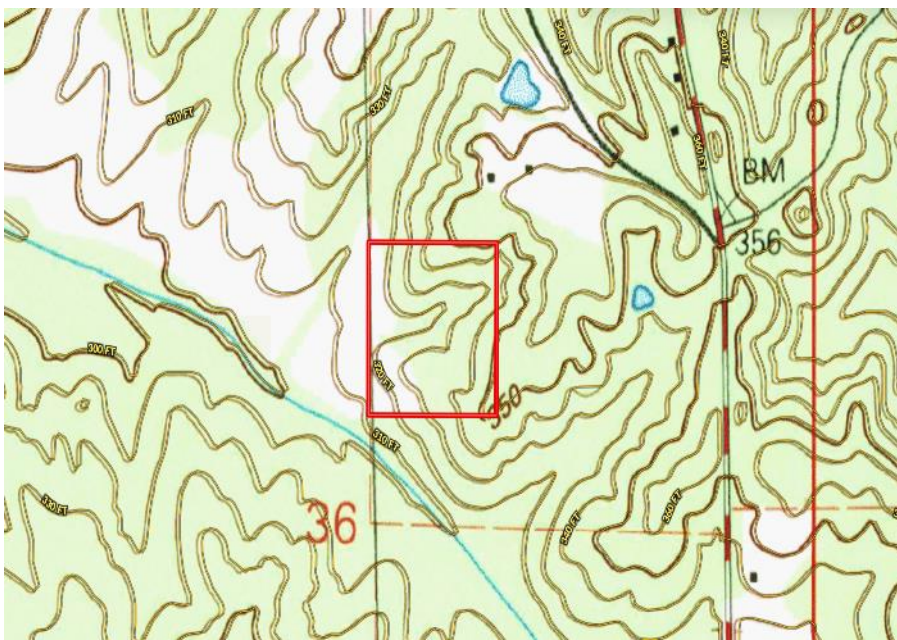
Expect More. Get More.

**TomSmithLandandHomes.com**

Information is believed to be accurate but not guaranteed.







TOPO  
MAP



SOIL  
MAP

SOIL CODE	SOIL DESCRIPTION	ACRES	%	CPI	NCCPI	CAP
SpE2	Smithdale-Providence complex, 12 to 17 percent slopes, eroded	10.44	77.91	0	57	6e
PoC2	Providence silt loam, 5 to 8 percent slopes, eroded	2.7	20.15	0	28	3e
Ar	Ariel silt loam	0.26	1.94	0	76	2w
TOTALS		13.4(* )	100%	-	51.53	5.32

*Call me  
today!*

**ALLYSON MIZE**, REALTOR®  
 Allyson@TomSmithLand.com  
 601.898.2772 office | 662.607.1703 cell

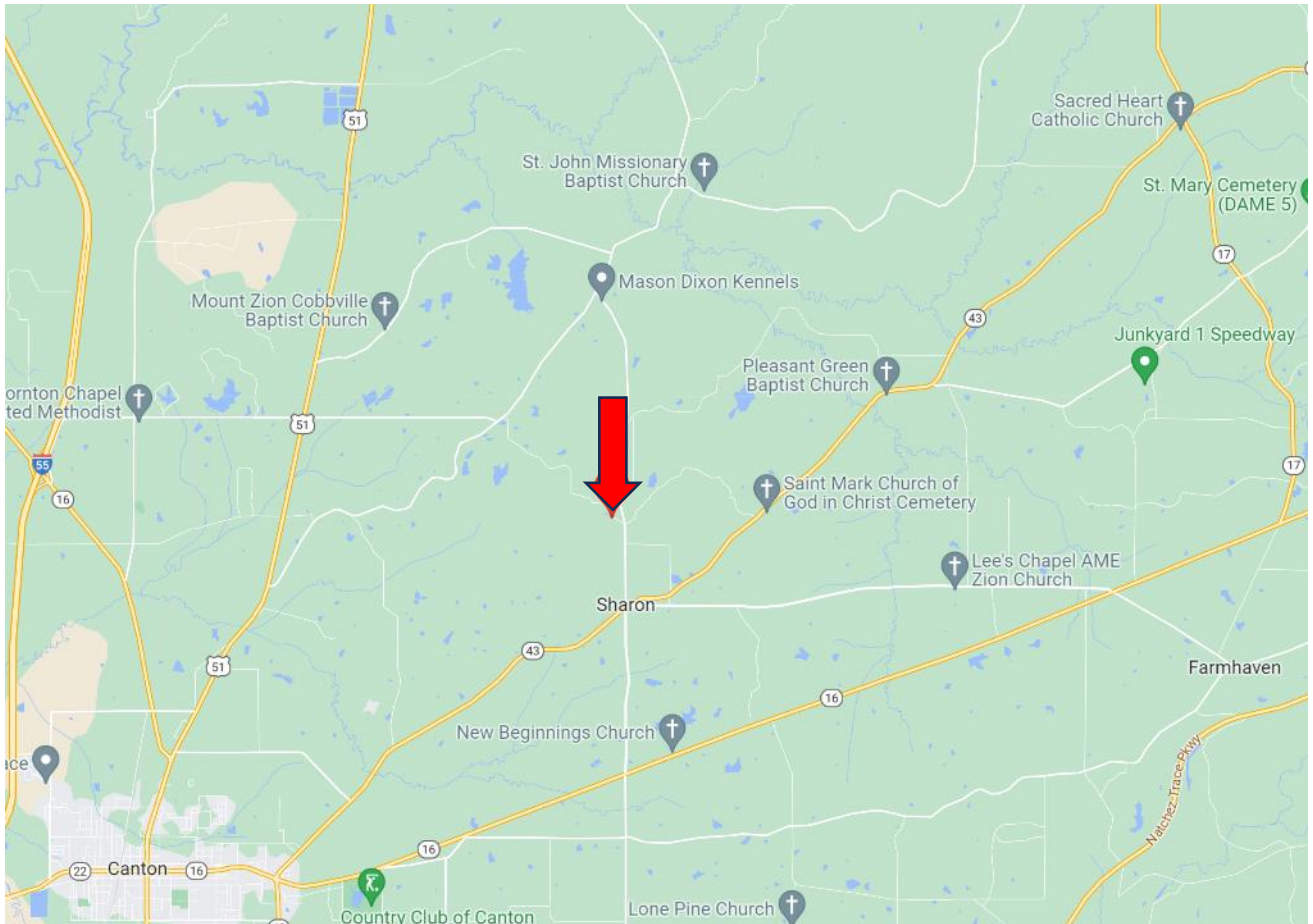


**TomSmithLandandHomes.com**

Information is believed to be accurate but not guaranteed.



# DIRECTIONAL MAP



**Directions from the intersection of Hwy 43 and Hwy 16 in Canton, MS:** Travel Hwy 43 N for 5.5 miles. Turn left onto Sharon Rd. After 0.2 miles, the entrance to the property will be on your left. [Google Map Link](#)



*Call me today!*

**ALLYSON MIZE, REALTOR®**  
Allyson@TomSmithLand.com  
601.898.2772 **office** | 662.607.1703 **cell**



**TomSmithLandandHomes.com**

Information is believed to be accurate but not guaranteed.

