

# Charming Country Home Bolivar County, MS



462 Cleveland Crossing Road Cleveland, MS 38732

\$775,000



**LINDSAY WILLIAMS**  
REALTOR®

O: 662.441.2500 | C: 662.719.8118  
Lindsay@TomSmithLand.com



**CHARLIE HEINSZ**  
REALTOR®

O: 662.441.2500 | C: 662.719.7218  
Charlie@TomSmithLand.com

**TomSmithLandandHomes.com**

Information is believed to be accurate but not guaranteed.



## 462 Cleveland Crossing Road Cleveland, MS

- 7.5 +/- Fenced Acres
- Built in 1998
- Five bedrooms, three and a half bathrooms, two story
- 4237+/- sq ft home
- 2,500+/- sq ft detached shop
- Open concept
- Laundry room with a separate pantry with laundry shoot from upstairs bathroom
- Family room with gas fire place and vaulted ceilings
- Dining room and foyer
- Keeping room with gas fire place
- Gunite swimming pool with hot tub
- Covered back porch with gas fire place
- Enclosed garage with entrance into half bath or kitchen
- New roof and windows in 2020
- Wiring complete for a home generator connection
- Four water heaters
- Mosquito system
- Rain Bird sprinkler system
- Hardwood Floors/Tile/Carpet
- Propane tank underground

Welcome to this charming five bedroom, three and a half bathroom home located on 7.5 +/- acres of fenced in property located in Cleveland, Bolivar County, MS. As you enter the property, through the electric gate there is a concrete paved driveway all the way to the house and shop. The property not only has a renovated gorgeous 4237+/- square foot home but also a 2500+/- square foot shop\man cave with covered parking areas. As you step inside, you will be greeted by an open concept, living and kitchen area with plenty of natural light and space to relax and entertain. It has an ideal chef's kitchen that offers sleek countertops, stainless steel appliances and ample cabinet space for your culinary needs. Adjacent to the kitchen is a dining room perfect for your family gatherings and special occasions. The breakfast room is off the kitchen and overlooks the gunite pool with hot tub. The covered porch in the backyard, accessible through the breakfast room, features a gas burning fireplace, and a quiet place to enjoy your morning coffee.

There is one bedroom downstairs with one and a half baths. Upstairs you will find four spacious bedrooms with two bathrooms. There is an enclosed garage attached to the home but an additional detached shop that can be used for additional parking. The shop has built in work stations along with a loft for additional storage. There is a separate heated/cooled area attached to the shop with a half bath designed as a man cave for gathering friends for a friendly game of pool to watching football games. This stunning property will make you feel like you are in the country but only minutes away from downtown Cleveland, MS. This is a must see property. Give Charlie or Lindsay a call for your private showing today!

Directions from Hwy 8 and Hwy 61 Cleveland, MS: Travel West on Hwy 8 for approximately 1.3 miles. Turn left onto W. Sunflower Road. In 1.0 miles continue onto Cleveland Crossing Road and in 1.3 miles the house will be on the right. [Click for Google Maps.](#)

**LINDSAY WILLIAMS**  
REALTOR®

O: 662.441.2500 | C: 662.719.8118  
Lindsay@TomSmithLand.com



**CHARLIE HEINSZ**  
REALTOR®

O: 662.441.2500 | C: 662.719.7218  
Charlie@TomSmithLand.com

**TomSmithLandandHomes.com**

Information is believed to be accurate but not guaranteed.





LINDSAY WILLIAMS  
REALTOR®

O: 662.441.2500 | C: 662.719.8118  
Lindsay@TomSmithLand.com



CHARLIE HEINSZ  
REALTOR®

O: 662.441.2500 | C: 662.719.7218  
Charlie@TomSmithLand.com

TomSmithLandandHomes.com

Information is believed to be accurate but not guaranteed.





LINDSAY WILLIAMS  
REALTOR®

O: 662.441.2500 | C: 662.719.8118  
Lindsay@TomSmithLand.com



CHARLIE HEINSZ  
REALTOR®

O: 662.441.2500 | C: 662.719.7218  
Charlie@TomSmithLand.com

[TomSmithLandandHomes.com](http://TomSmithLandandHomes.com)

Information is believed to be accurate but not guaranteed.





LINDSAY WILLIAMS  
REALTOR®

O: 662.441.2500 | C: 662.719.8118  
Lindsay@TomSmithLand.com



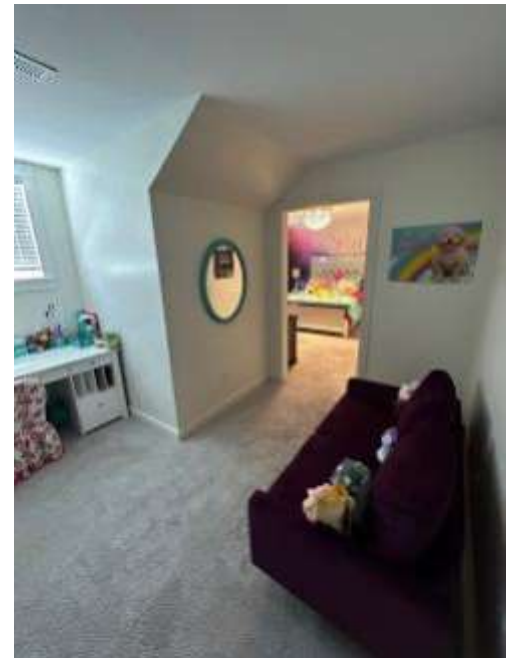
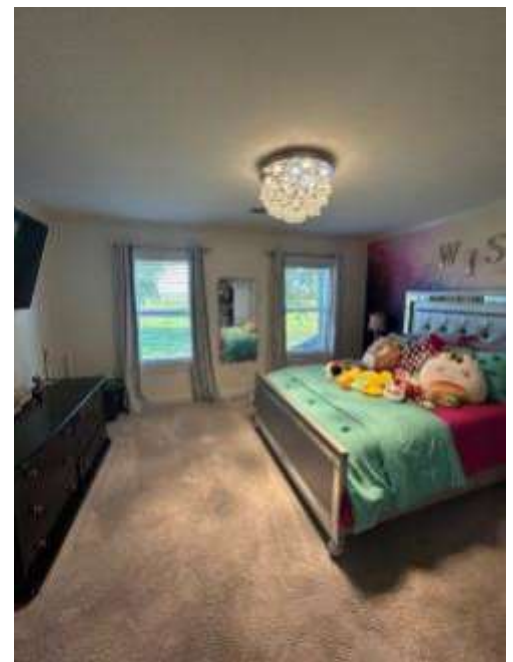
CHARLIE HEINSZ  
REALTOR®

O: 662.441.2500 | C: 662.719.7218  
Charlie@TomSmithLand.com

TomSmithLandandHomes.com

Information is believed to be accurate but not guaranteed.





LINDSAY WILLIAMS  
REALTOR®

O: 662.441.2500 | C: 662.719.8118  
Lindsay@TomSmithLand.com



CHARLIE HEINSZ  
REALTOR®

O: 662.441.2500 | C: 662.719.7218  
Charlie@TomSmithLand.com

TomSmithLandandHomes.com

Information is believed to be accurate but not guaranteed.





LINDSAY WILLIAMS  
REALTOR®

O: 662.441.2500 | C: 662.719.8118  
Lindsay@TomSmithLand.com



CHARLIE HEINSZ  
REALTOR®

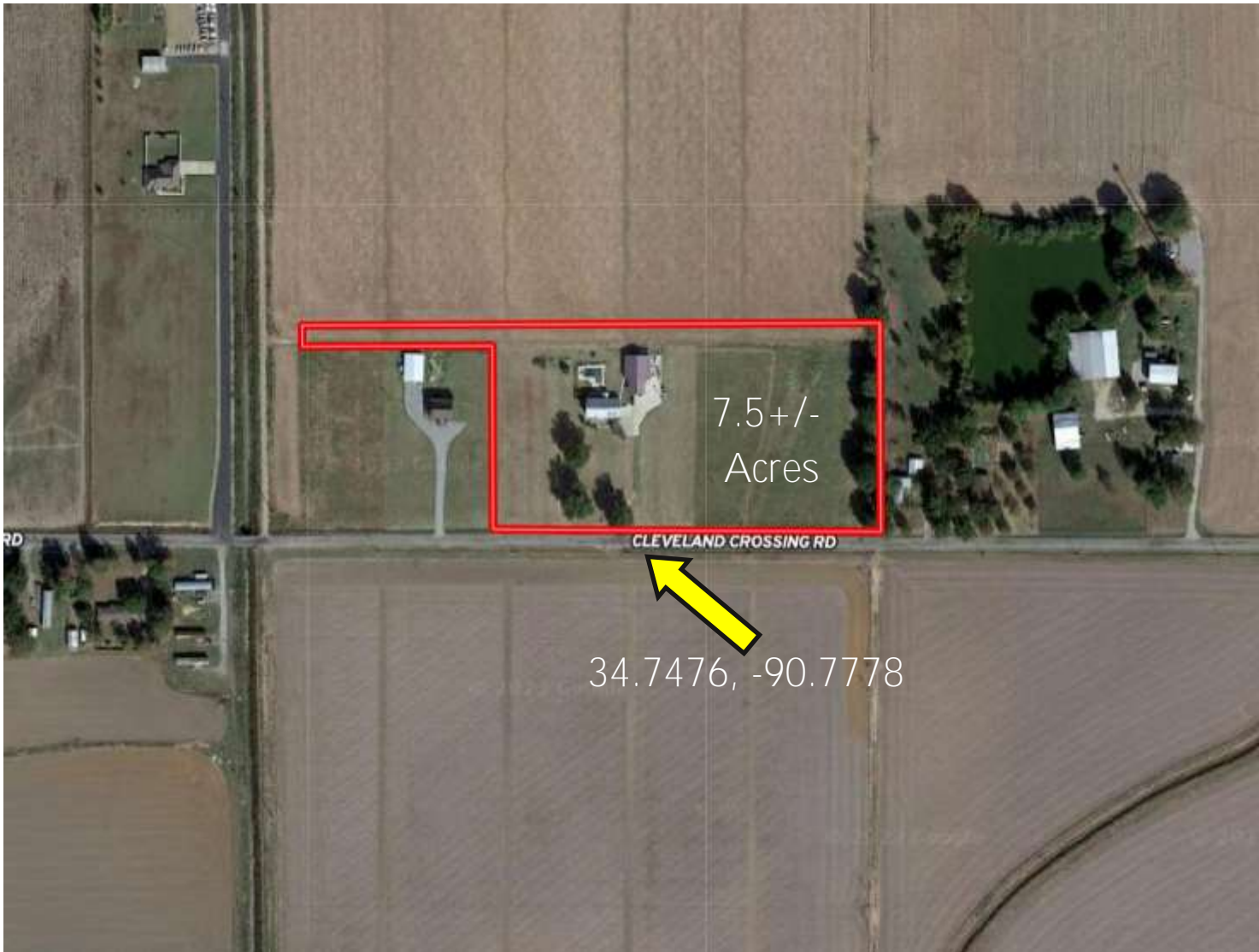
O: 662.441.2500 | C: 662.719.7218  
Charlie@TomSmithLand.com

[TomSmithLandandHomes.com](http://TomSmithLandandHomes.com)

Information is believed to be accurate but not guaranteed.



# AERIAL MAP



[Click for Interactive Map](#)

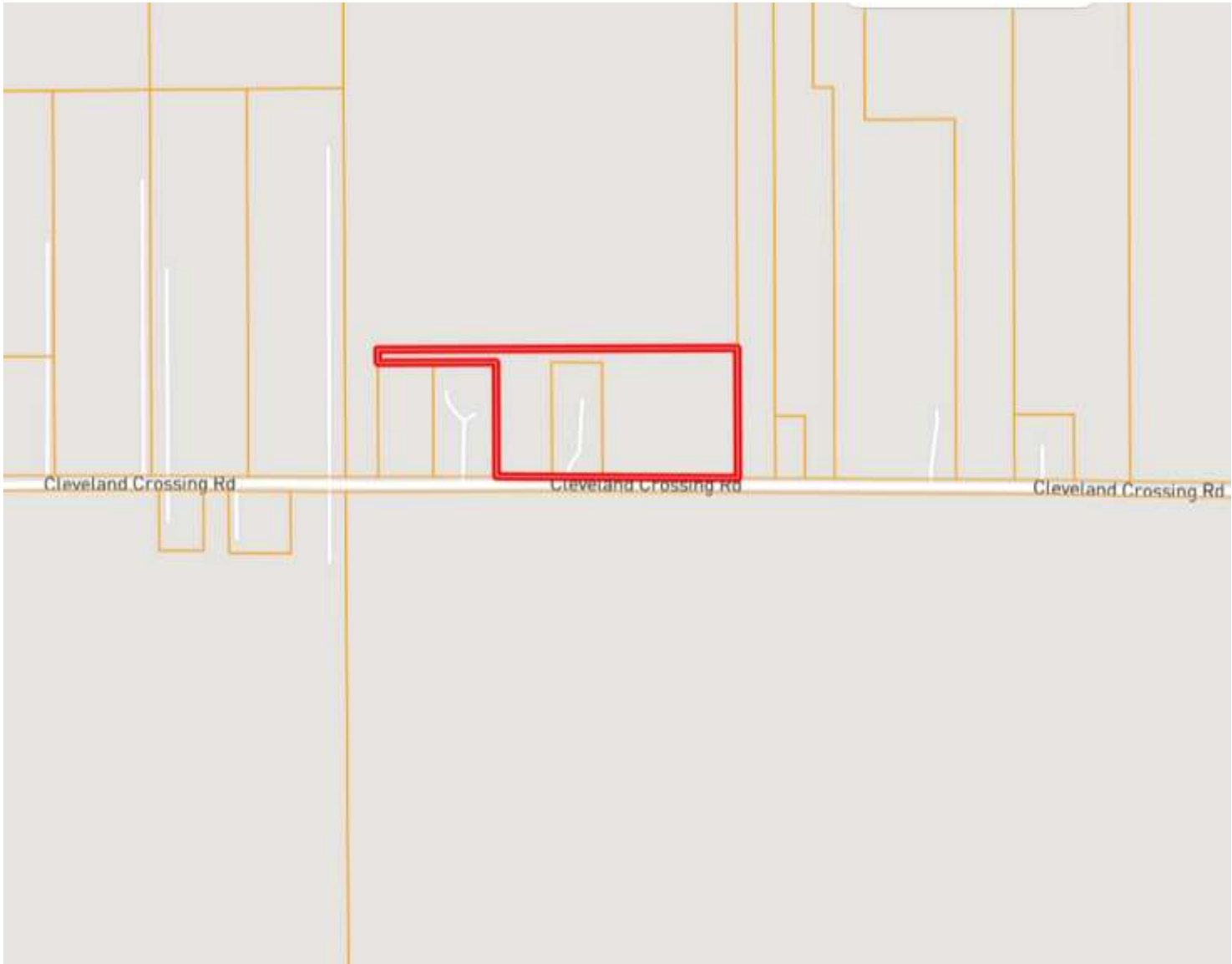
**LINDSAY WILLIAMS**  
REALTOR®  
O: 662.441.2500 | C: 662.719.8118  
Lindsay@TomSmithLand.com



**CHARLIE HEINSZ**  
REALTOR®  
O: 662.441.2500 | C: 662.719.7218  
Charlie@TomSmithLand.com



# OWNERSHIP MAP

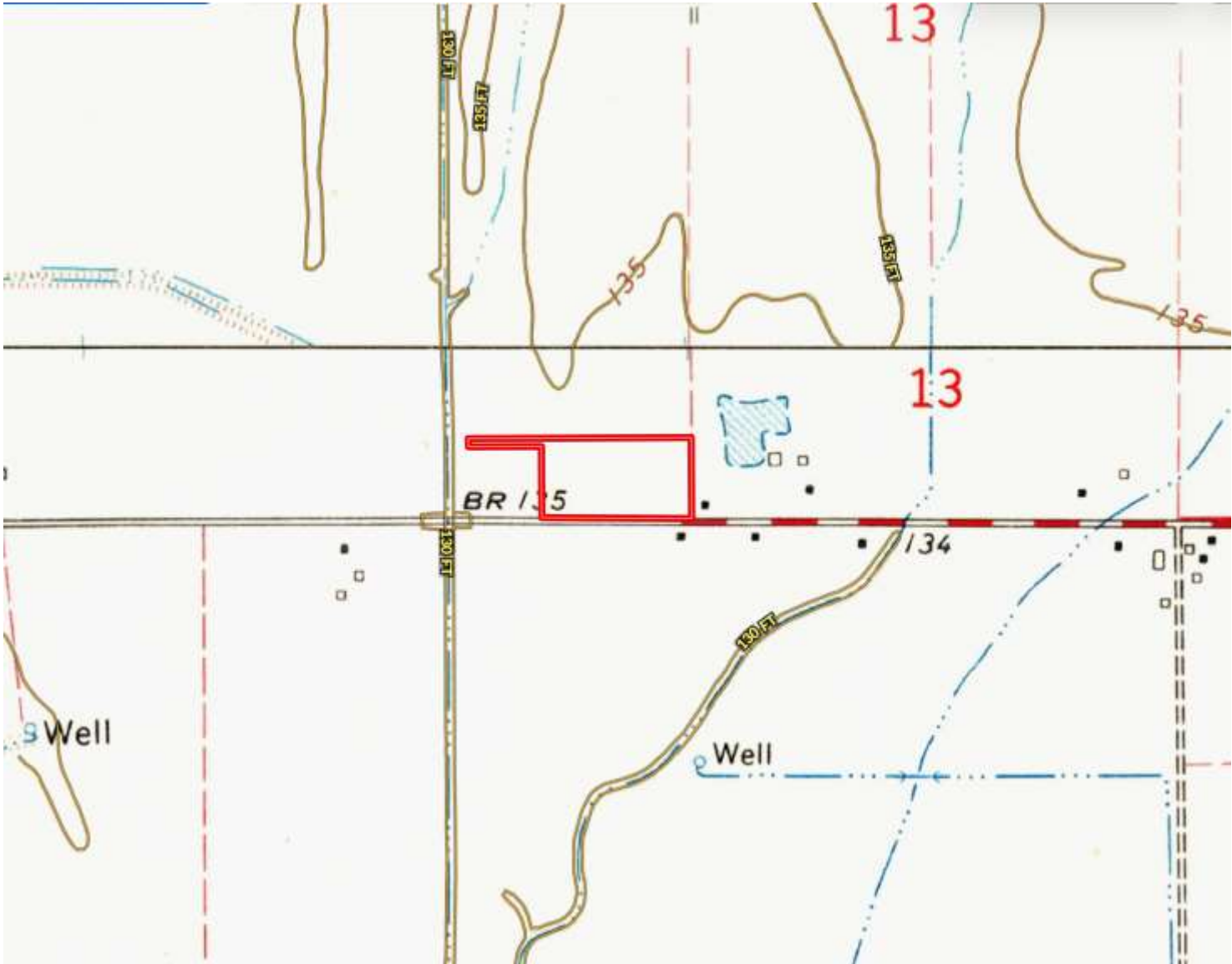


**LINDSAY WILLIAMS**  
REALTOR®  
O: 662.441.2500 | C: 662.719.8118  
Lindsay@TomSmithLand.com



**CHARLIE HEINSZ**  
REALTOR®  
O: 662.441.2500 | C: 662.719.7218  
Charlie@TomSmithLand.com

# TOPOGRAPHY MAP

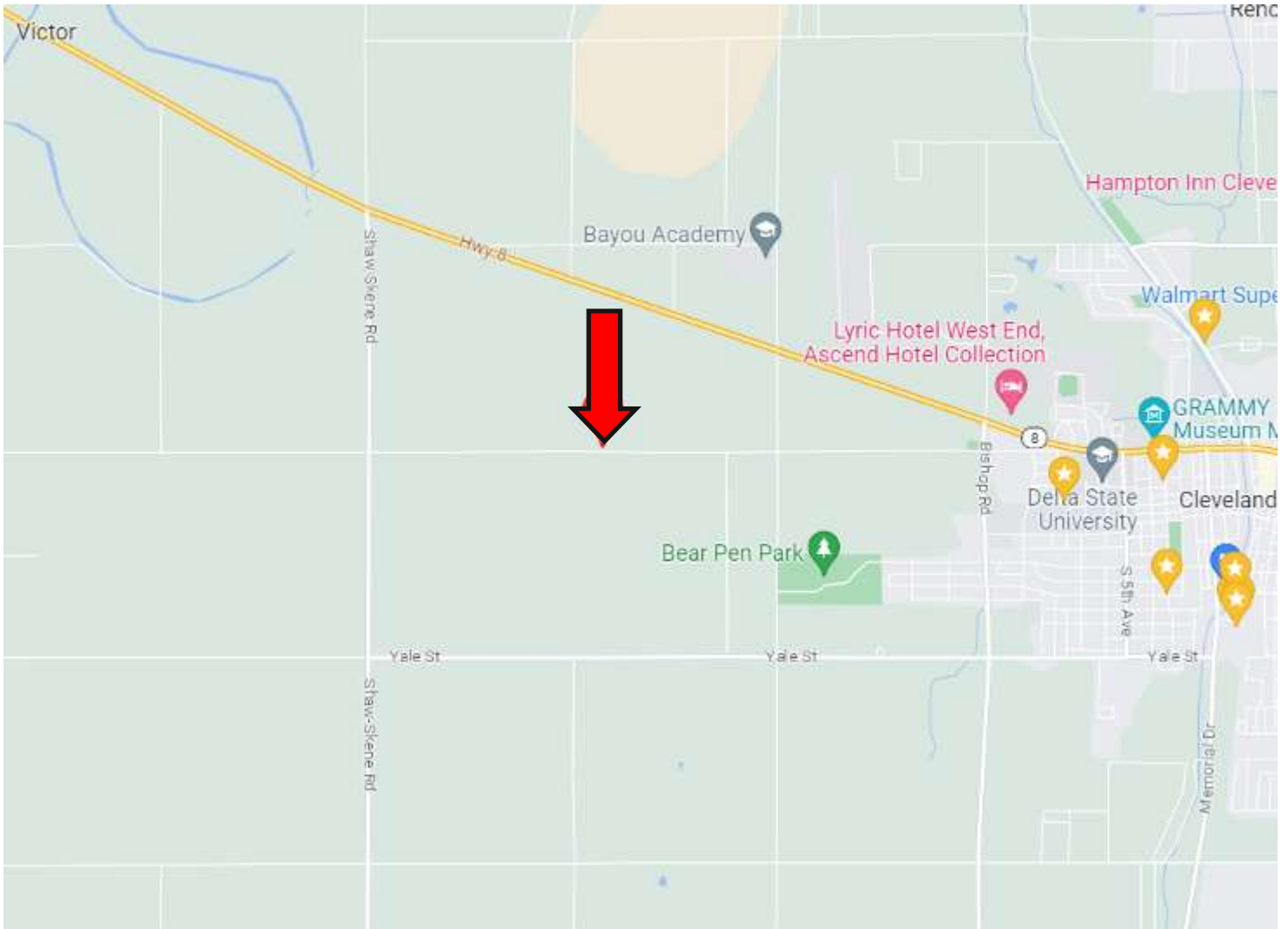


LINDSAY WILLIAMS  
REALTOR®  
O: 662.441.2500 | C: 662.719.8118  
Lindsay@TomSmithLand.com



CHARLIE HEINSZ  
REALTOR®  
O: 662.441.2500 | C: 662.719.7218  
Charlie@TomSmithLand.com

# DIRECTIONAL MAP



**Directions from Hwy 8 and Hwy 61 Cleveland, MS: Travel West on Hwy 8 for approximately 1.3 miles. Turn left onto W. Sunflower Road. In 1.0 miles continue onto Cleveland Crossing Road. After 1.3 miles, the house will be on the right. [Click for Google Maps.](#)**



**LINDSAY WILLIAMS**  
REALTOR®

O: 662.441.2500 | C: 662.719.8118  
Lindsay@TomSmithLand.com



**CHARLIE HEINSZ**  
REALTOR®

O: 662.441.2500 | C: 662.719.7218  
Charlie@TomSmithLand.com