

Gorgeous Lakefront Home Rankin County, MS

109 Longwood Drive Florence, MS 39073



\$367,350

Have you been searching for a home that offers a lakefront view? Introducing your new 2,449± sq. ft., three-bedroom, two-and-a-half bath lakefront home in Rankin County, MS! This home is just an hour of Hattiesburg, MS, and 15 miles south of Pearl, MS. Sitting on a 0.67± acre corner lot gazing over a 27± acre stocked lake with Bass and Bream, you won't have to travel further than the backyard to unload your boat. This home has a wraparound porch and an enclosed two-car garage to keep you dry from the elements. There is plenty of yard space for family and friend get-togethers or letting the kids roam. Impress your guests in the large kitchen with a huge island, lots of counter and storage space for cooking and entertaining, stainless steel appliances, and a large farmhouse sink. Unique primary suite with spacious walk-in closet, sliding barn door to bathroom with large free-standing tub. French doors open to the beautiful Family room with sliding doors and easy access to the deck area and garage. Enjoy the natural sunlight daily with breathtaking views of the entire lake. The upstairs portion of the home features a screened-in patio for outside enjoyment. The upstairs loft can easily be transitioned into a fourth bedroom or office space. Step outside and enjoy fresh pears from your pear tree. Call Kadero Edley or Bill Patrick today to schedule your private viewing!



KADERO EDLEY
REALTOR®

O: 601.898.2772 | C: 601.488.7000
Kadero@TomSmithLand.com



BILL PATRICK
REALTOR®

O: 601.898.2772 | C: 601.573.0749
Bill@TomSmithLand.com

TomSmithLandandHomes.com

Information is believed to be accurate but not guaranteed.





KADERO EDLEY
REALTOR®

O: 601.898.2772 | C: 601.488.7000
Kadero@TomSmithLand.com



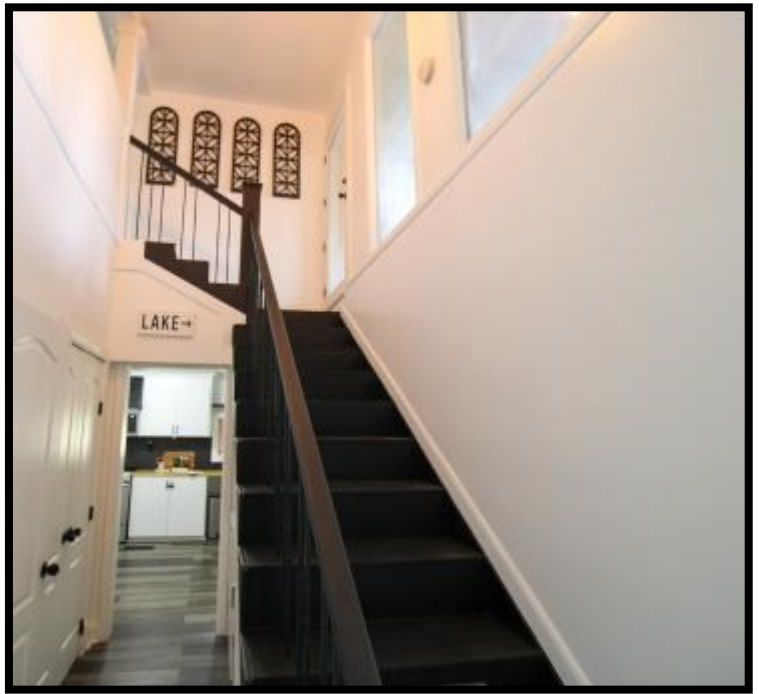
BILL PATRICK
REALTOR®

O: 601.898.2772 | C: 601.573.0749
Bill@TomSmithLand.com

TomSmithLandandHomes.com

Information is believed to be accurate but not guaranteed.





KADERO EDLEY
REALTOR®

O: 601.898.2772 | C: 601.488.7000
Kadero@TomSmithLand.com



BILL PATRICK
REALTOR®

O: 601.898.2772 | C: 601.573.0749
Bill@TomSmithLand.com

TomSmithLandandHomes.com

Information is believed to be accurate but not guaranteed





KADERO EDLEY
REALTOR®

O: 601.898.2772 | C: 601.488.7000
Kadero@TomSmithLand.com



BILL PATRICK
REALTOR®

O: 601.898.2772 | C: 601.573.0749
Bill@TomSmithLand.com

TomSmithLandandHomes.com

Information is believed to be accurate but not guaranteed.





KADERO EDLEY
REALTOR®

O: 601.898.2772 | C: 601.488.7000
Kadero@TomSmithLand.com



BILL PATRICK
REALTOR®

O: 601.898.2772 | C: 601.573.0749
Bill@TomSmithLand.com

TomSmithLandandHomes.com

Information is believed to be accurate but not guaranteed.





KADERO EDLEY
REALTOR®

O: 601.898.2772 | C: 601.488.7000
Kadero@TomSmithLand.com



BILL PATRICK
REALTOR®

O: 601.898.2772 | C: 601.573.0749
Bill@TomSmithLand.com

TomSmithLandandHomes.com

Information is believed to be accurate but not guaranteed.





KADERO EDLEY
REALTOR®

O: 601.898.2772 | C: 601.488.7000
Kadero@TomSmithLand.com



BILL PATRICK
REALTOR®

O: 601.898.2772 | C: 601.573.0749
Bill@TomSmithLand.com

TomSmithLandandHomes.com

Information is believed to be accurate but not guaranteed.



Aerial Map



[Click Here For Interactive Map](#)



KADERO EDLEY
REALTOR®

O: 601.898.2772 | C: 601.488.7000
Kadero@TomSmithLand.com



BILL PATRICK
REALTOR®

O: 601.898.2772 | C: 601.573.0749
Bill@TomSmithLand.com

TomSmithLandandHomes.com

Information is believed to be accurate but not guaranteed.



Ownership Map



KADERO EDLEY
REALTOR®

O: 601.898.2772 | C: 601.488.7000
Kadero@TomSmithLand.com



Expect More. Get More.



BILL PATRICK
REALTOR®

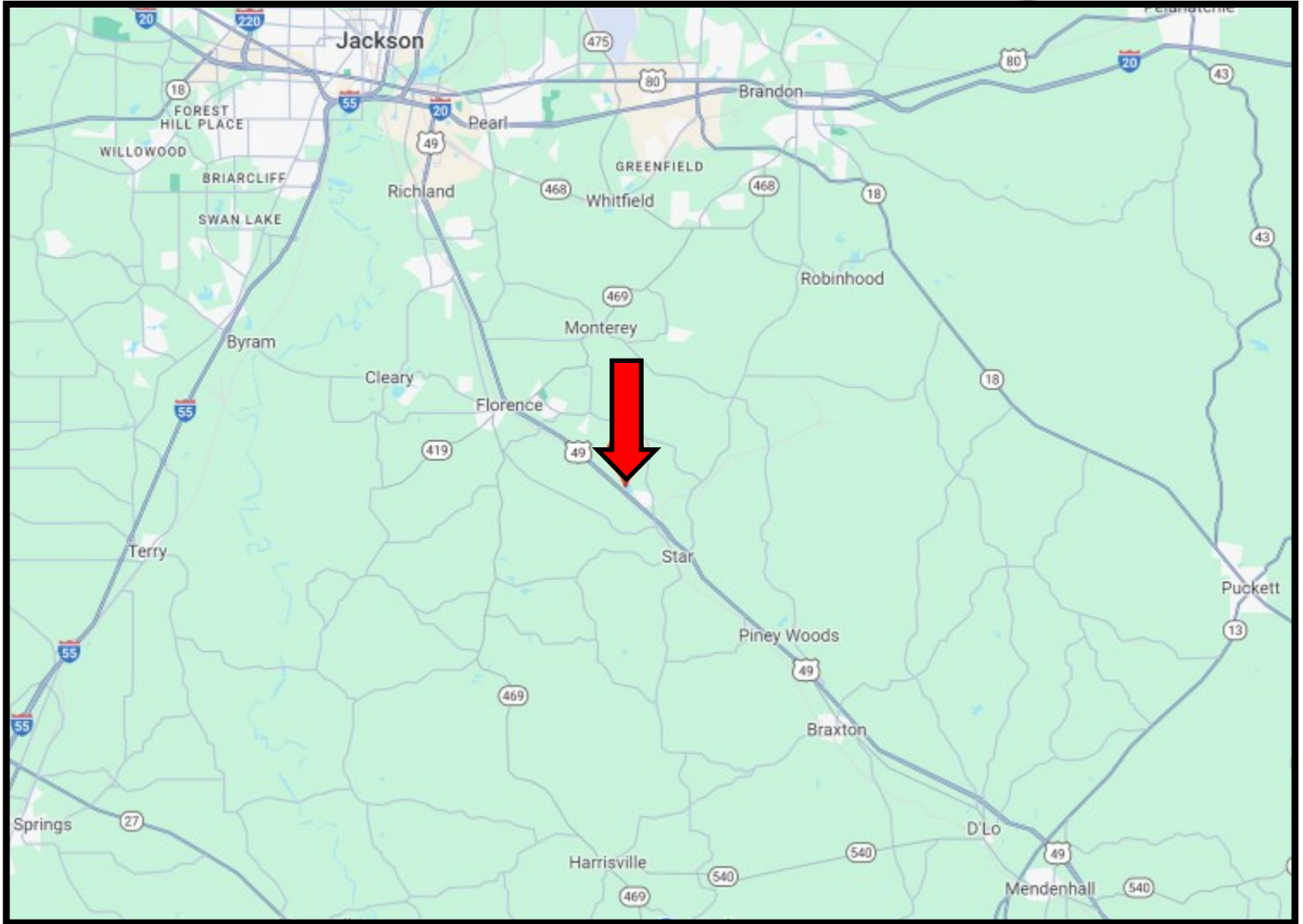
O: 601.898.2772 | C: 601.573.0749
Bill@TomSmithLand.com

TomSmithLandandHomes.com

Information is believed to be accurate but not guaranteed.



Directional Map



Directions from I-20 West in Pearl, MS: Travel West on I-20 for 0.9 miles. Take exit 47 toward US-49 S/Hattiesburg for 0.5 miles. Travel south on US-49 for 12.7 miles. Turn left onto Monmouth Rd., and travel 456 ft. Turn right onto Longwood Drive. After 394 ft., the property will be on your left. [Google Maps Link](#)



KADERO EDLEY
REALTOR®

O: 601.898.2772 | C: 601.488.7000
Kadero@TomSmithLand.com



BILL PATRICK
REALTOR®

O: 601.898.2772 | C: 601.573.0749
Bill@TomSmithLand.com