

# Lauderdale County Home in the Clarkdale School District 2949 Atwood Road Meridian, MS 39301



**\$235,000**

Check out this fantastic three-bedroom, two-bath, 1,500-square-foot home in south Lauderdale County in the Clarkdale school district. This home sits on a 1.3± acre lot and has plenty of room to enjoy the spacious backyard. The home features concrete floors and an open floor plan, with a spacious garage and a beautiful concrete driveway. The house is only a short drive to Clarkdale Schools and only a few miles from all the amenities of downtown Meridian. Give Brett a call to schedule your private showing.



**BRETT  
CARNEY**  
REALTOR®

Office: 601.898.2772

Cell: 601.710.9633

Brett@TomSmithLand.com



**A Real Estate Expert You Can Trust**

TomSmithLandandHomes.com

Information is believed to be accurate but not guaranteed.







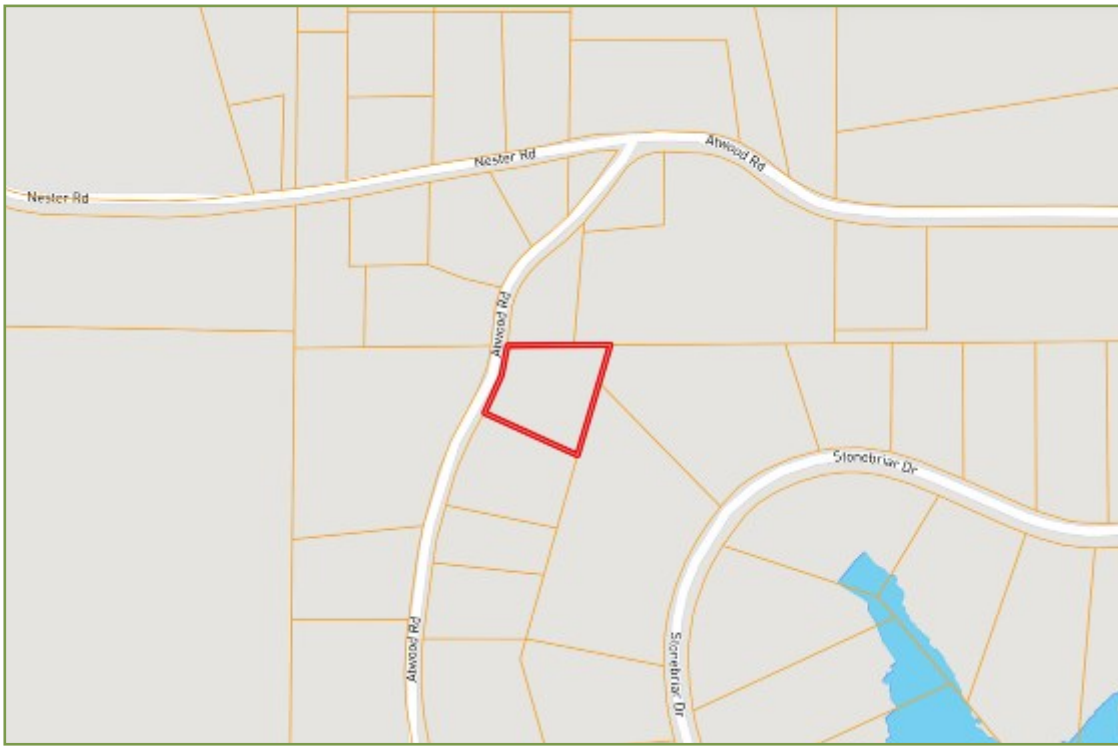
**BRETT CARNEY**  
 REALTOR®  
 Office: 601.898.2772  
 Cell: 601.710.9633  
 Brett@TomSmithLand.com



**A Real Estate Expert You Can Trust**  
 TomSmithLandandHomes.com

Information is believed to be accurate but not guaranteed.





# Ownership Map



# Aerial Map

[CLICK HERE FOR  
AN INTERACTIVE  
MAP](#)

**BRETT CARNEY**

REALTOR®

Office: 601.898.2772

Cell: 601.710.9633

Brett@TomSmithLand.com



**A Real Estate Expert You Can Trust**

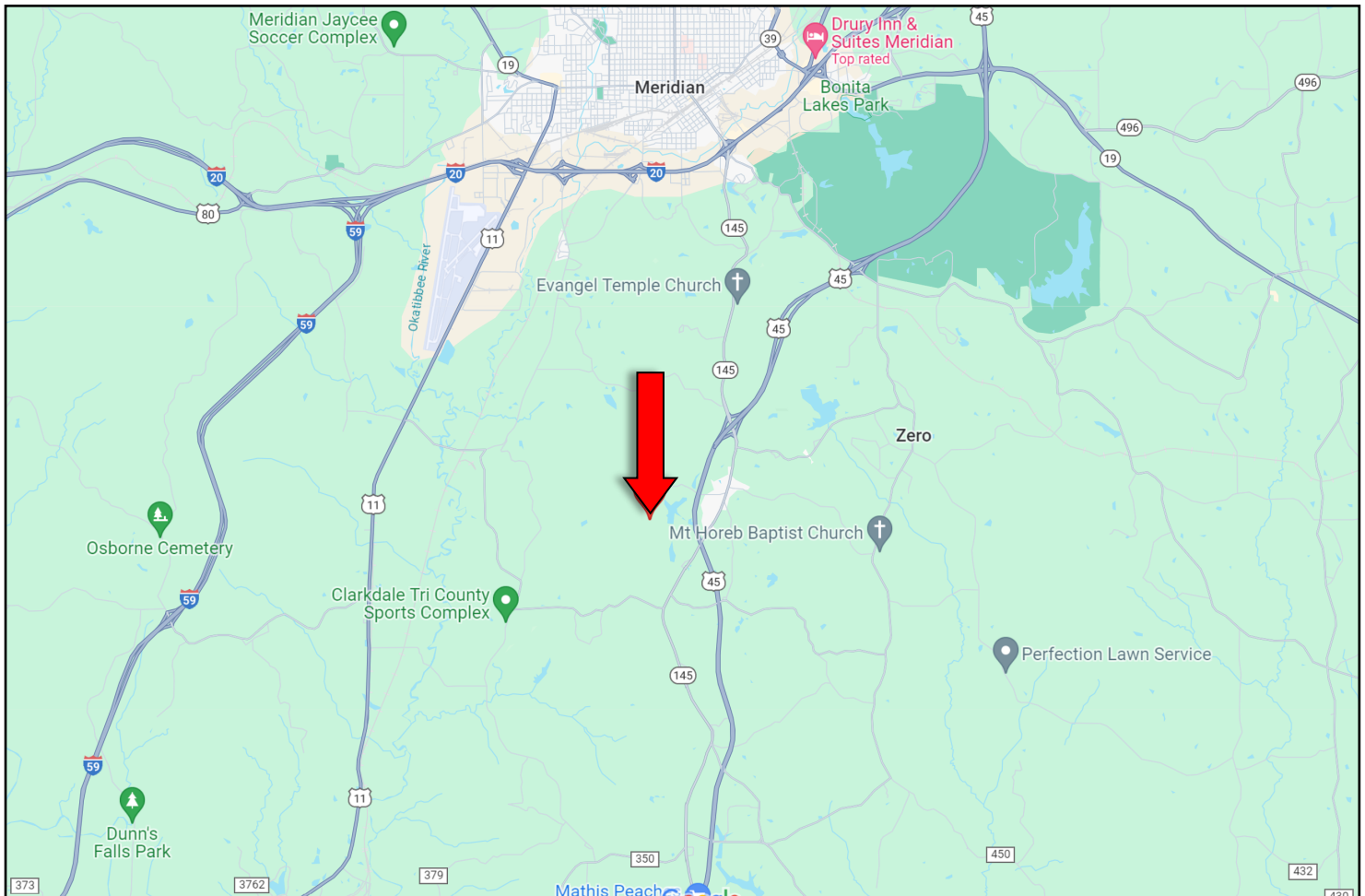
TomSmithLandandHomes.com

Information is believed to be accurate but not guaranteed.





# Directional Map



**Directions from I-20/I-59 and Hwy 145 in Meridian, MS:** Take exit 153 for Hwy 145. Keep right at the fork and merge onto Hwy 45 and travel 4.5 miles. Turn right onto Atwood Road, and travel 1 mile. Turn left to stay on Atwood Road. After .5 miles the home will be on your left.  
**2949 Atwood Road Meridian, MS 39301 —Click for Directions**



**BRETT  
CARNEY**  
REALTOR®

Office: 601.898.2772  
Cell: 601.710.9633  
Brett@TomSmithLand.com



**A Real Estate Expert You Can Trust**

TomSmithLandandHomes.com

Information is believed to be accurate but not guaranteed.

