

# 87± ACRE HUNTING TRACT

## Jackson County, MS



**\$243,600**

Take a look at this excellent 87± acre hunting tract in Jackson County, MS. This property is a mixture of big hardwood and pine timber. Along with the timber, the property also features a creek, providing an excellent habitat for deer and other game. Plenty of deer sign to be seen. This property is located just under an hour from Mobile, AL, and has quick access to I-10 and the Mississippi Gulf coast. Call David to schedule a viewing of this property today!



**DAVID  
BELDEN**  
REALTOR®

Office: 601.898.2772

Cell: 601.415.3883

[DBelden@TomSmithLand.com](mailto:DBelden@TomSmithLand.com)



**A Real Estate Expert You Can Trust**

[TomSmithLandandHomes.com](http://TomSmithLandandHomes.com)

Information is believed to be accurate but not guaranteed.







**DAVID BELDEN**

REALTOR®

Office: 601.898.2772

Cell: 601.415.3883

[DBelden@TomSmithLand.com](mailto:DBelden@TomSmithLand.com)



**A Real Estate Expert You Can Trust**

[TomSmithLandandHomes.com](http://TomSmithLandandHomes.com)

Information is believed to be accurate but not guaranteed.







**DAVID BELDEN**

REALTOR®

Office: 601.898.2772

Cell: 601.415.3883

DBelden@TomSmithLand.com



**A Real Estate Expert You Can Trust**

TomSmithLandandHomes.com

Information is believed to be accurate but not guaranteed.





# Aerial Map



[Click Here for an Interactive Map](#)

**DAVID BELDEN**

REALTOR®

Office: 601.898.2772

Cell: 601.415.3883

[DBelden@TomSmithLand.com](mailto:DBelden@TomSmithLand.com)



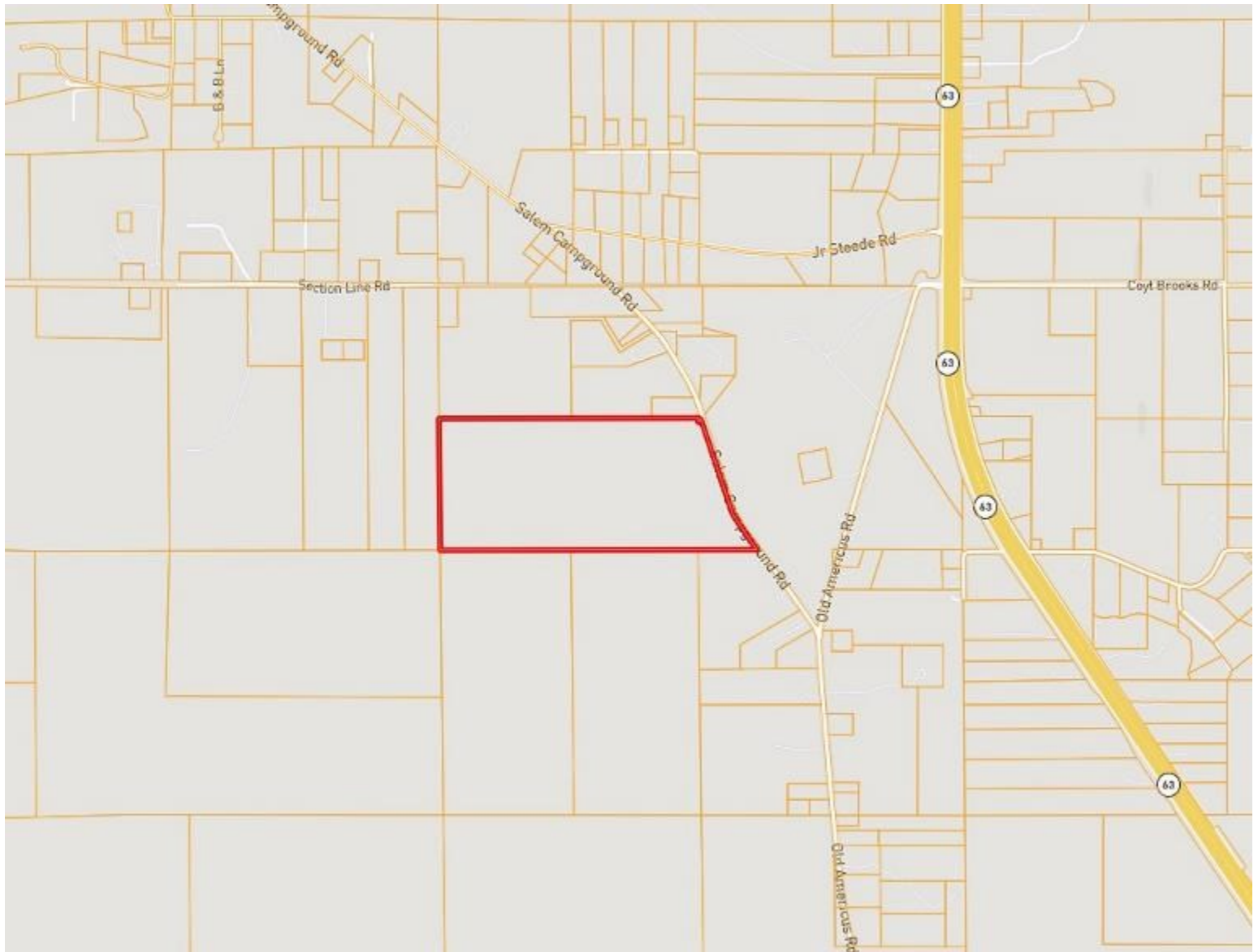
**A Real Estate Expert You Can Trust**

[TomSmithLandandHomes.com](http://TomSmithLandandHomes.com)

Information is believed to be accurate but not guaranteed.



# Ownership Map



**DAVID BELDEN**

REALTOR®

Office: 601.898.2772

Cell: 601.415.3883

[DBelden@TomSmithLand.com](mailto:DBelden@TomSmithLand.com)



**A Real Estate Expert You Can Trust**

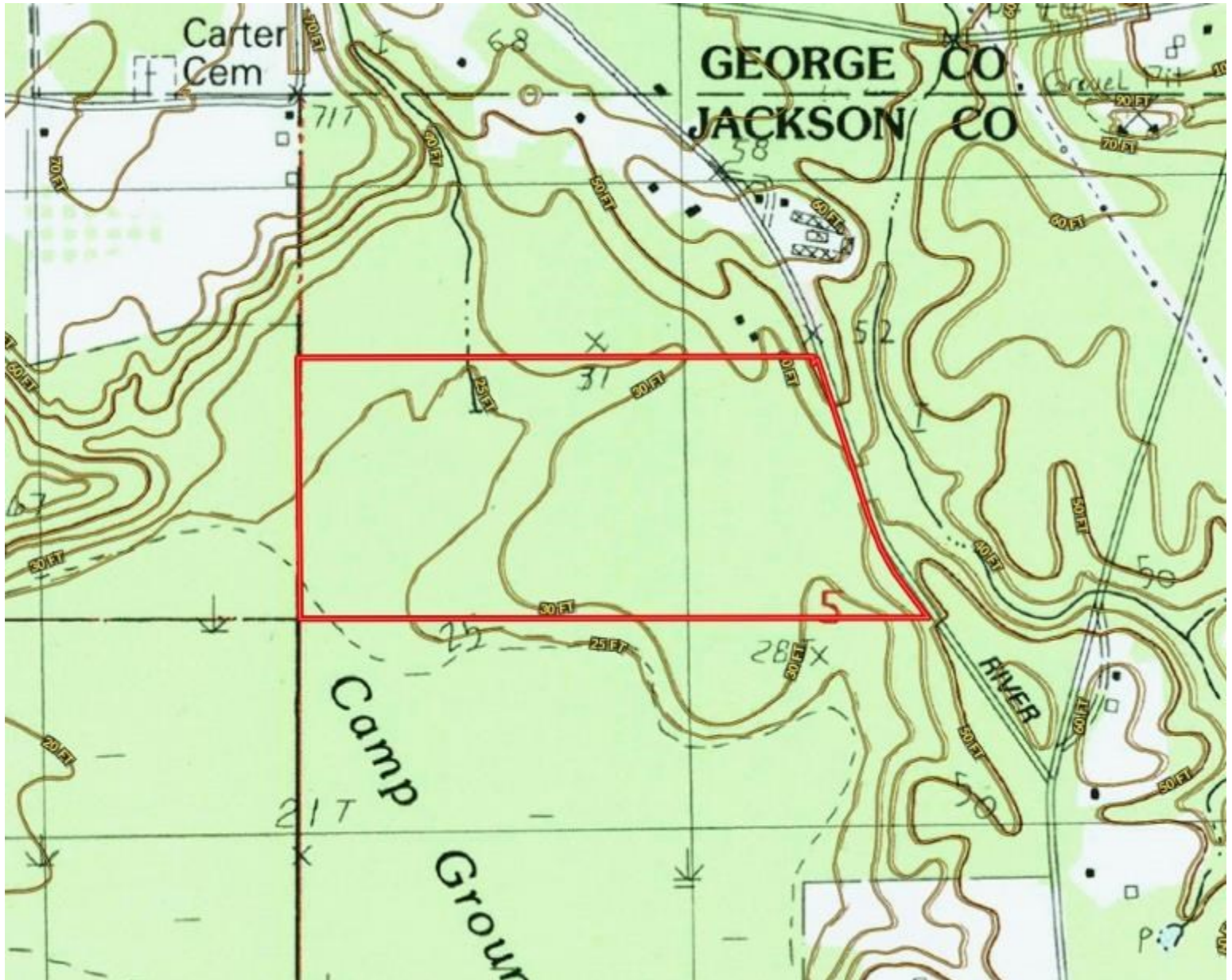
[TomSmithLandandHomes.com](http://TomSmithLandandHomes.com)

Information is believed to be accurate but not guaranteed.





# Topography Map



**DAVID BELDEN**

REALTOR®

Office: 601.898.2772

Cell: 601.415.3883

[DBelden@TomSmithLand.com](mailto:DBelden@TomSmithLand.com)



**A Real Estate Expert You Can Trust**

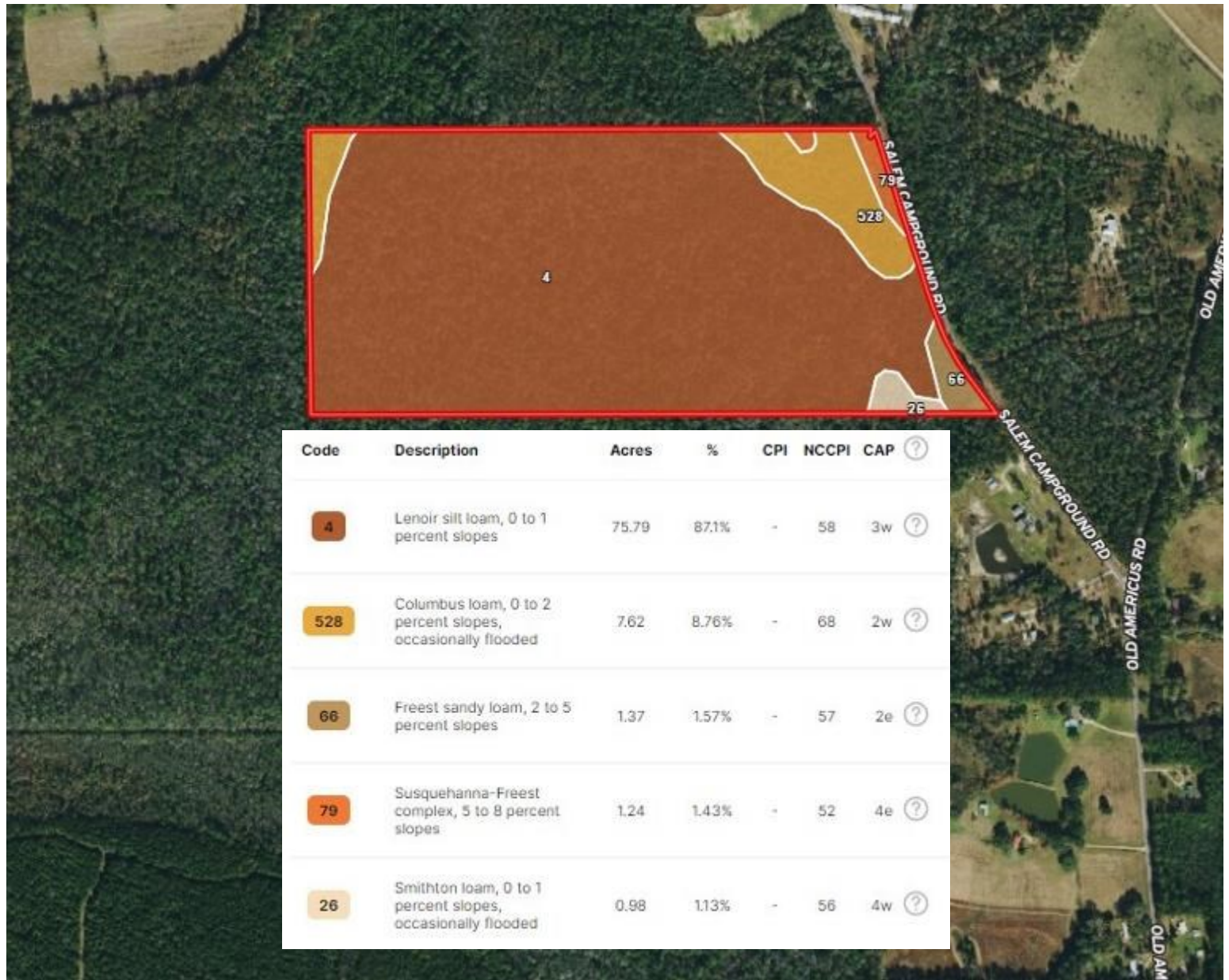
[TomSmithLandandHomes.com](http://TomSmithLandandHomes.com)

Information is believed to be accurate but not guaranteed.





# Soil Map



**DAVID BELDEN**

REALTOR®

Office: 601.898.2772

Cell: 601.415.3883

DBelden@TomSmithLand.com



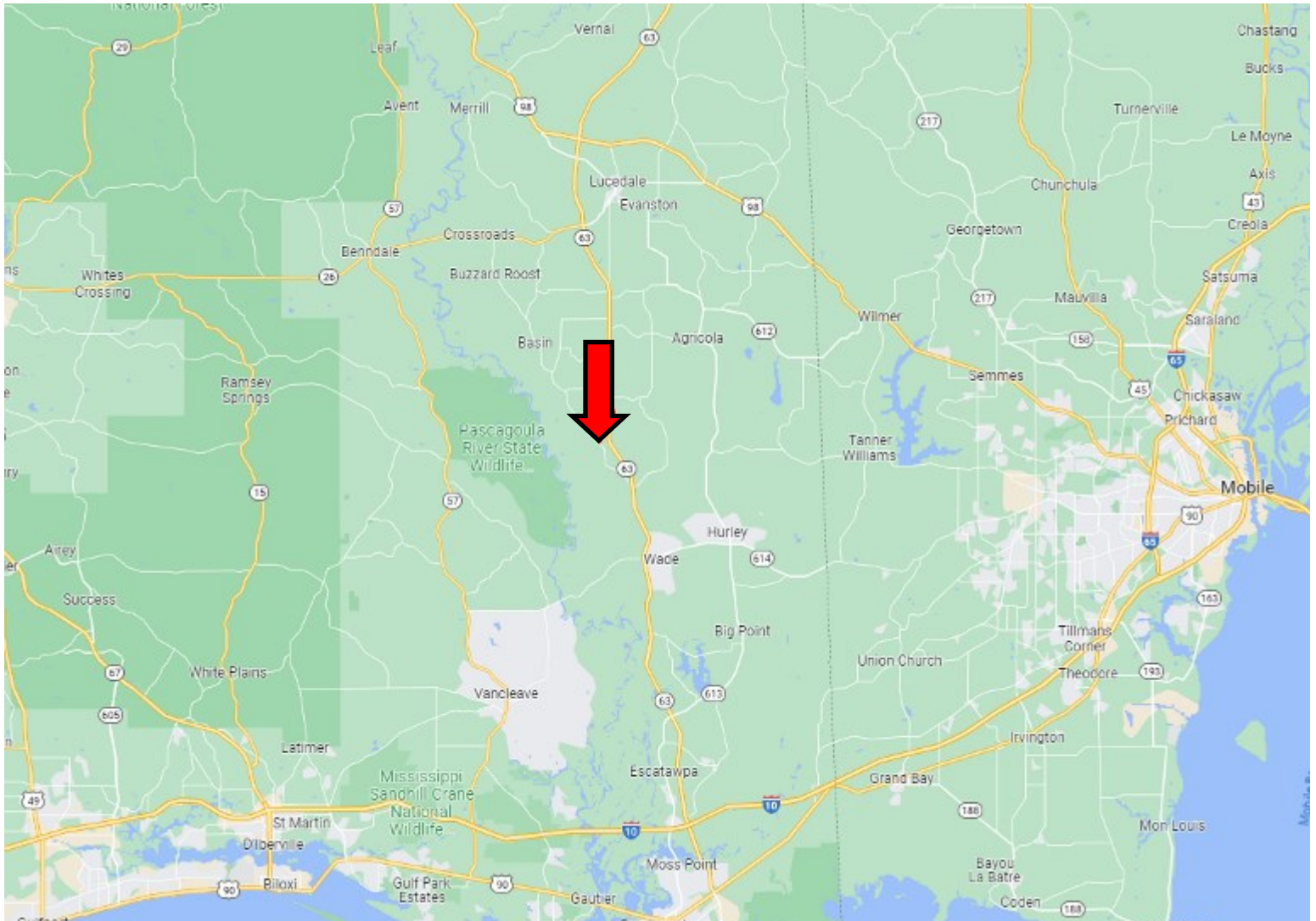
**A Real Estate Expert You Can Trust**

TomSmithLandandHomes.com

Information is believed to be accurate but not guaranteed.



# Directional Map



**Directions from the intersection of Hwy-26 and Hwy-63 in Lucedale, MS:** Travel south on Hwy-63 for 11.3 miles. Turn right onto Coyt Brooks Rd, in 289 feet, Coyt Brooks Rd turns left and becomes Old Americus Rd. In .7 miles, take a sharp right onto River Rd/Salem Campground Rd. After .5 miles, the property will be on the left.

[GOOGLE MAP LINK](#)



DAVID  
**BELDEN**  
REALTOR®

Office: 601.898.2772

Cell: 601.415.3883

DBelden@TomSmithLand.com



**A Real Estate Expert You Can Trust**

TomSmithLandandHomes.com

Information is believed to be accurate but not guaranteed.

