

# Renovated Country Home on 4.47± Acres 549 Wright Road Clarksdale, MS 38614 \$499,000



Welcome to this enchanting, renovated home in Clarksdale, Coahoma County, MS, just off Viney Ridge, behind Lee Academy. This house sits on 4.47+/- acres of land and has an 880 sqft renovated guest house and a 2+/- acre stocked fishing pond. The main house is 4,200 sqft, two stories, with five bedrooms, four and a half bathrooms on the bottom floor, two bedrooms, one bathroom, and a bonus room upstairs. The primary bedroom downstairs offers his and hers walk-in closet, a huge renovated bathroom with double vanities, a soaking tub, a walk-in shower with four shower heads, two benches, and a walk-in sauna. Located right outside the primary bathroom is a walk-in shower for you and the animals to clean off after a long day outside. This home also has a screened-in patio in the backyard that offers plenty of room for get-togethers and an outdoor fireplace to stay warm during the winter months. You can enjoy a gorgeous view from the back patio over the stocked fishing pond. Call Anthony today for your private showing!



**ANTHONY  
STEEN**  
REALTOR®

Office: 662.441.2500  
Cell: 662.645.5151

[Anthony@TomSmithLand.com](mailto:Anthony@TomSmithLand.com)



Expect More. Get More.

**A Real Estate Expert You Can Trust**

[TomSmithLandandHomes.com](http://TomSmithLandandHomes.com)

Information is believed to be accurate but not guaranteed.







# ANTHONY STEEN

REALTOR®

Office: 662.441.2500

Cell: 662.645.5151

Anthony@TomSmithLand.com



## A Real Estate Expert You Can Trust

TomSmithLandandHomes.com

Information is believed to be accurate but not guaranteed.







## ANTHONY STEEN

REALTOR®

Office: 662.441.2500

Cell: 662.645.5151

Anthony@TomSmithLand.com



A Real Estate Expert You Can Trust

TomSmithLandandHomes.com

Information is believed to be accurate but not guaranteed.

2011-2023  
BEST  
BROKERAGES





## ANTHONY STEEN

REALTOR®

Office: 662.441.2500

Cell: 662.645.5151

Anthony@TomSmithLand.com



A Real Estate Expert You Can Trust

TomSmithLandandHomes.com

Information is believed to be accurate but not guaranteed.







## ANTHONY STEEN

REALTOR®

Office: 662.441.2500

Cell: 662.645.5151

Anthony@TomSmithLand.com



A Real Estate Expert You Can Trust

TomSmithLandandHomes.com

Information is believed to be accurate but not guaranteed.

2011-2023  
BEST  
BROKERAGES





**ANTHONY STEEN**

REALTOR®

Office: 662.441.2500

Cell: 662.645.5151

Anthony@TomSmithLand.com



**A Real Estate Expert You Can Trust**

TomSmithLandandHomes.com

Information is believed to be accurate but not guaranteed.







**ANTHONY STEEN**

REALTOR®

Office: 662.441.2500

Cell: 662.645.5151

Anthony@TomSmithLand.com



**A Real Estate Expert You Can Trust**

TomSmithLandandHomes.com

Information is believed to be accurate but not guaranteed.







**ANTHONY STEEN**

REALTOR®

Office: 662.441.2500

Cell: 662.645.5151

Anthony@TomSmithLand.com



**A Real Estate Expert You Can Trust**

TomSmithLandandHomes.com

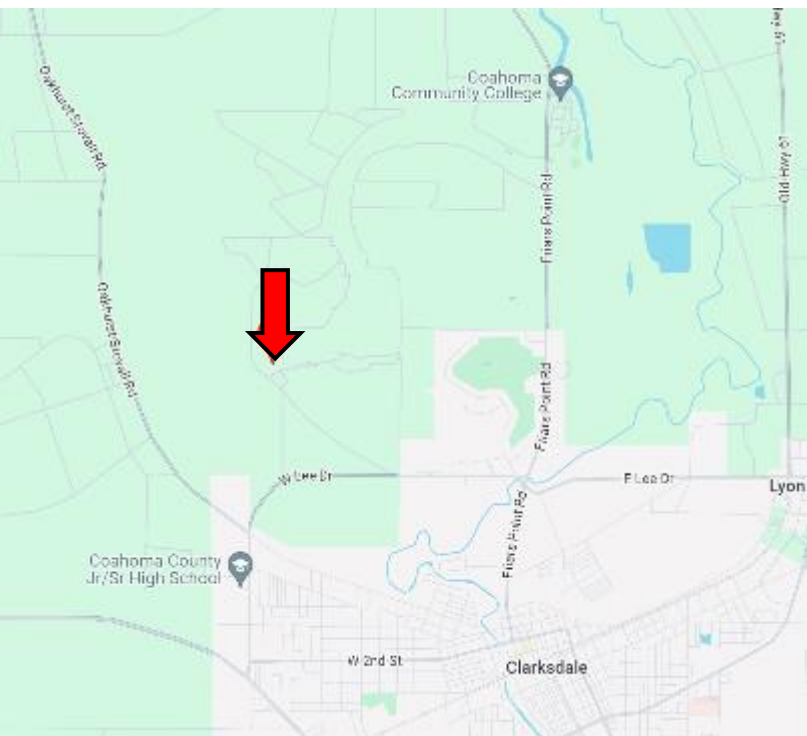
Information is believed to be accurate but not guaranteed.

2011-2023  
BEST  
BROKERAGES



# MAPS

[Click for Interactive Map](#)



**Directions from the intersection of Hwy 61 and Hwy 49 in Clarksdale, MS 38614:** Travel West on Hwy 61 for approximately 0.5 miles. Turn on MS 161 N. then in 0.6 miles, turn left onto Hopson Street. Travel 2.7 miles, then turn right onto Viney Ridge Rd. Travel 1.1 miles, then turn right onto Wright Road. After 0.1 miles, the house will be on the left. [Click for Google Maps](#)  
**Address:** 549 Wright Road Clarksdale, MS 38614



**ANTHONY  
STEEN**  
REALTOR®

Office: 662.441.2500  
Cell: 662.645.5151

[Anthony@TomSmithLand.com](mailto:Anthony@TomSmithLand.com)



Expect More. Get More.

**A Real Estate Expert You Can Trust**

[TomSmithLandandHomes.com](http://TomSmithLandandHomes.com)

Information is believed to be accurate but not guaranteed.

