

# Renovated Country Home on 4.7±



549 Wright Road Clarksdale, MS 38614

\$499,000

Welcome to this enchanting, renovated home in Clarksdale, Coahoma County, MS, just off Viney Ridge, behind Lee Academy. This house sits on 4.47+/- acres of land and has an 880 sqft renovated mother-in-law house and a 2+/- AC stocked fishing pond. The main house is 4,200 sqft, two stories, with five bedrooms, four and a half bathrooms on the bottom floor, two bedrooms, one bathroom, and a bonus room upstairs. The primary bedroom downstairs offers his and hers walk-in closet, a huge renovated bathroom with double vanities, a soaking tub, a walk-in shower with four shower heads, two benches, and a walk-in sauna. Located right outside the primary bathroom is a walk-in shower for you and the animals to clean off after a long day outside. This home also has a screened-in patio in the backyard that offers plenty of room for get-togethers and an outdoor fireplace to stay warm during the winter months. You can enjoy a gorgeous view over the stocked fishing pond from the back patio. Call Anthony today for your private showing!



**ANTHONY  
STEEN**

REALTOR®

Office: 662.441.2500

Cell: 662.645.5151

Anthony@TomSmithLand.com



**A Real Estate Expert You Can Trust**

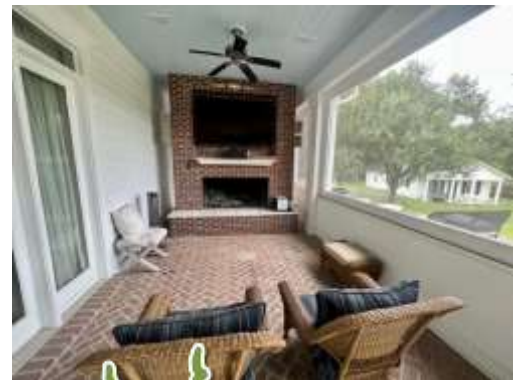
TomSmithLandandHomes.com

Information is believed to be accurate but not guaranteed.



Address: 549 Wright Road Clarksdale, MS 38614

**Directions from the intersection of Hwy 61 and Hwy 49 in Clarksdale, MS 38614:** Travel West on Hwy 61 for approximately 0.5 miles. Turn on MS 161 N. then in 0.6 miles, turn left onto Hopson Street. Travel 2.7 miles, then turn right onto Viney Ridge Rd. Travel 1.1 miles, then turn right onto Wright Road. After 0.1 miles, the house will be on the left. [Click for Google Maps](#)



**ANTHONY STEEN**  
REALTOR®  
Office: 662.441.2500  
Cell: 662.645.5151  
[Anthony@TomSmithLand.com](mailto:Anthony@TomSmithLand.com)



**A Real Estate Expert You Can Trust**  
[TomSmithLandandHomes.com](http://TomSmithLandandHomes.com)

Information is believed to be accurate but not guaranteed.





**ANTHONY STEEN**

REALTOR®

Office: 662.441.2500

Cell: 662.645.5151

Anthony@TomSmithLand.com



**A Real Estate Expert You Can Trust**

TomSmithLandandHomes.com

Information is believed to be accurate but not guaranteed.





## ANTHONY STEEN

REALTOR®

Office: 662.441.2500

Cell: 662.645.5151

Anthony@TomSmithLand.com

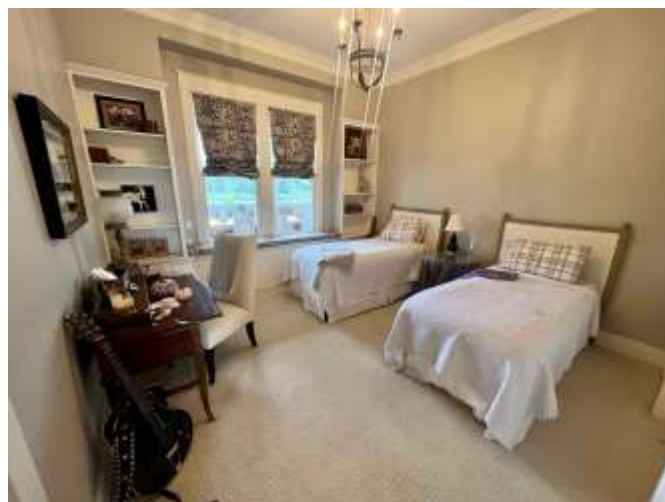


A Real Estate Expert You Can Trust

TomSmithLandandHomes.com

Information is believed to be accurate but not guaranteed.

2011-2023  
BEST  
BROKERAGES



**ANTHONY STEEN**  
REALTOR®  
Office: 662.441.2500  
Cell: 662.645.5151  
Anthony@TomSmithLand.com



**A Real Estate Expert You Can Trust**  
TomSmithLandandHomes.com

Information is believed to be accurate but not guaranteed.





## ANTHONY STEEN

REALTOR®

Office: 662.441.2500

Cell: 662.645.5151

Anthony@TomSmithLand.com



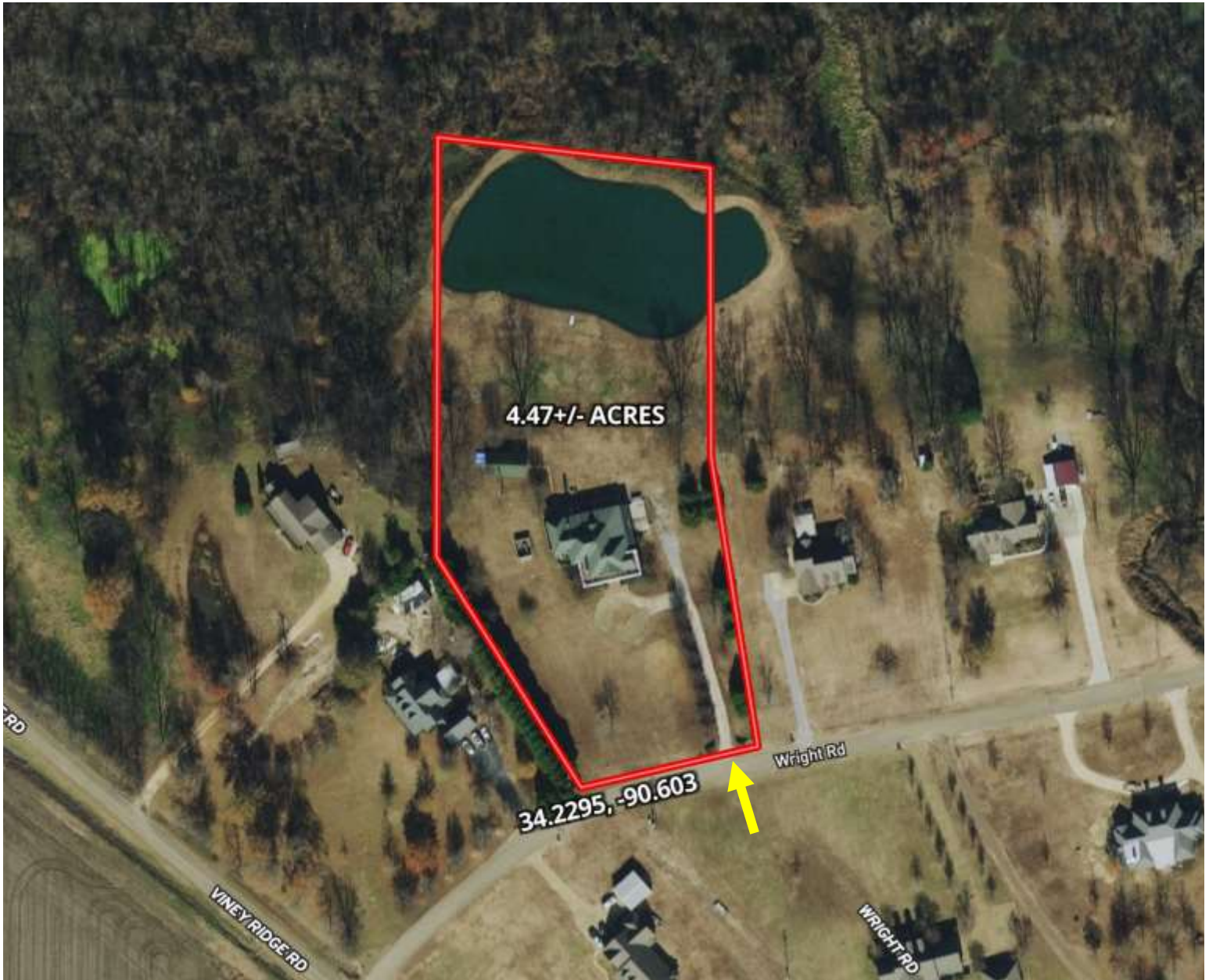
A Real Estate Expert You Can Trust

TomSmithLandandHomes.com

Information is believed to be accurate but not guaranteed.

2011-2023  
BEST  
BROKERAGES

# AERIAL MAP



[Click for Interactive Map](#)

**ANTHONY STEEN**

REALTOR®

Office: 662.441.2500

Cell: 662.645.5151

Anthony@TomSmithLand.com



**A Real Estate Expert You Can Trust**

TomSmithLandandHomes.com

Information is believed to be accurate but not guaranteed.



# OWNERSHIP MAP



LINDSAY WILLIAMS  
REALTOR®

O: 662.441.2500 | C: 662.719.8118  
Lindsay@TomSmithLand.com



CHARLIE HEINSZ  
REALTOR®

O: 662.441.2500 | C: 662.719.7218  
Charlie@TomSmithLand.com

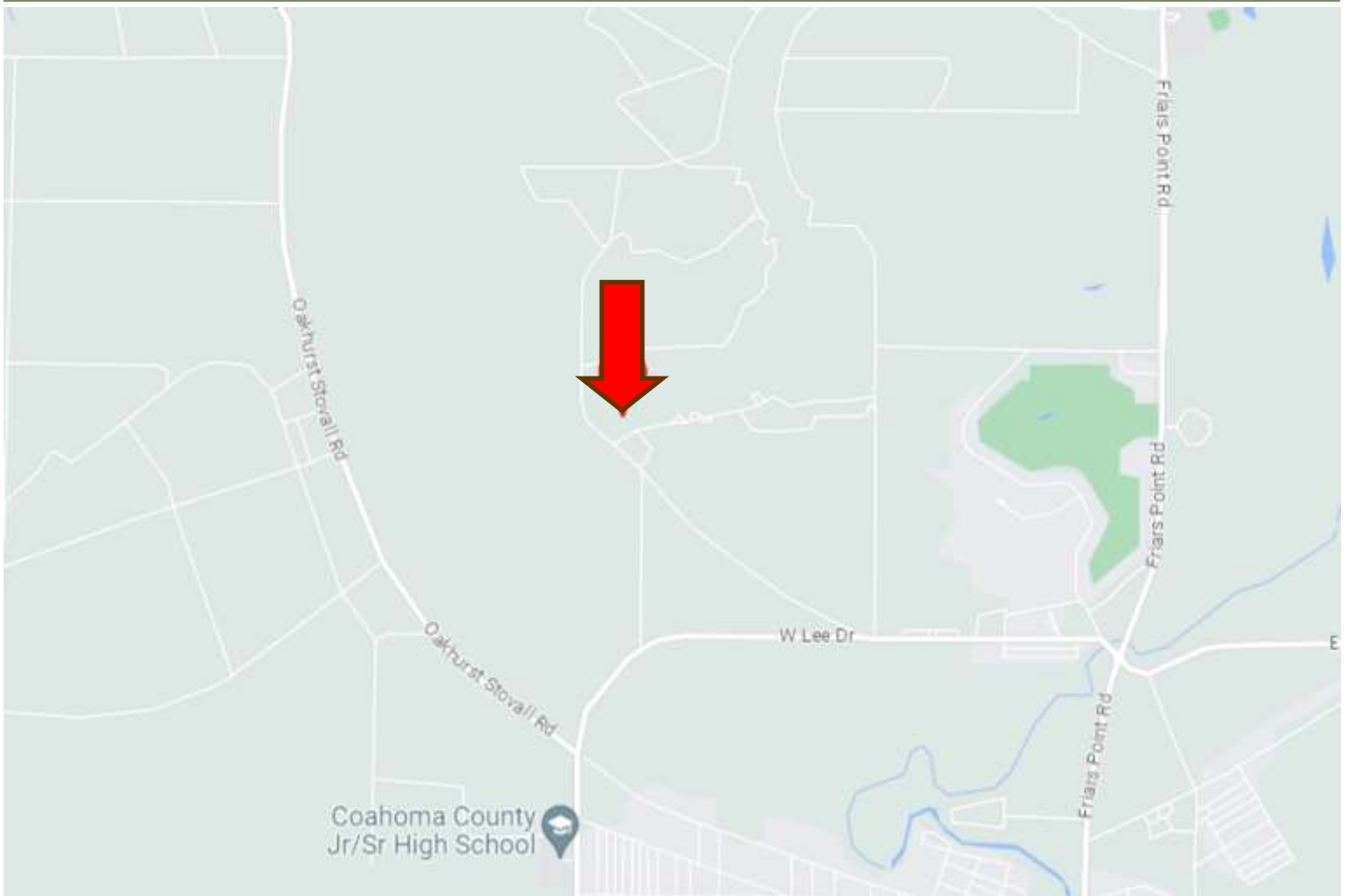
[TomSmithLandandHomes.com](http://TomSmithLandandHomes.com)

Information is believed to be accurate but not guaranteed.





# DIRECTIONAL MAP



Address: 549 Wright Road Clarksdale, MS 38614

**Directions from the intersection of Hwy 61 and Hwy 49 in Clarksdale, MS 38614:** Travel West on Hwy 61 for approximately 0.5 miles. Turn on MS 161 N. then in 0.6 miles, turn left onto Hopson Street. Travel 2.7 miles, then turn right onto Viney Ridge Rd. Travel 1.1 miles, then turn right onto Wright Road. After 0.1 miles, the house will be on the left. [Click for Google Maps](#)



**ANTHONY  
STEEN**

REALTOR®

Office: 662.441.2500

Cell: 662.645.5151

Anthony@TomSmithLand.com



**A Real Estate Expert You Can Trust**

TomSmithLandandHomes.com

Information is believed to be accurate but not guaranteed.

