

# Hunter's Paradise

42± ACRES IN HOLMES COUNTY, MS



\$210,000

- 42± ACRE PROPERTY IN HOLMES COUNTY, MS
- SERENE AND SECLUDED RETREAT, GREAT FOR HUNTING
- ONLY 40 MINUTES FROM MADISON, MS
- DIVERSE TOPOGRAPHY WITH ROLLING HILLS, LARGE FOOD PLOTS, CREEK, HARDWOOD TREES, AND STANDS
- RUSTIC CAMP HOUSE
- AMPLE LIVING AREAS, FULLY EQUIPPED KITCHEN, AND COZY BEDROOMS
- UNMATCHED SECLUSION AND TRANQUILITY
- IDEAL FOR NATURE ENTHUSIASTS AND HUNTERS
- INCLUDES BARN AND BIG WHITETAIL DEER
- LESS THAN AN HOUR FROM THE JACKSON METRO AREA



MIKE  
**ODOM**  
REALTOR®

Office: 601.898.2772

Cell: 601.927.5018

MikeOdom@TomSmithLand.com



A Real Estate Expert You Can Trust

TomSmithLandandHomes.com

Information is believed to be accurate but not guaranteed.





**BIG DEER THAT WON'T BREAK THE BANK!**  
Welcome to your private paradise in Holmes County, Mississippi! This incredible 42-acre property offers a serene and secluded retreat, perfect for those seeking privacy and tranquility while chasing that mature buck or longbeard while still being conveniently located just 40 minutes from Madison, MS. As you enter the property, you'll be immediately captivated by the natural beauty that surrounds you. The land boasts a diverse topography featuring rolling hills, large food plots, a fantastic road system, a live creek, large hardwood trees, and stands galore.

The camp house on the property is a true gem, exuding rustic charm and offering all the comforts needed while enjoying a weekend away. With its warm and inviting atmosphere, this well-appointed dwelling provides the perfect space to unwind after a day of exploration. This camp house offers ample living areas, a fully equipped kitchen, and cozy bedrooms, creating a comfortable and convenient retreat for family and friends. One of the greatest highlights of this incredible property is its unmatched seclusion. You'll enjoy the utmost privacy and tranquility by being surrounded by nature's embrace. Immerse yourself in the sights and sounds of the countryside as you breathe in the fresh air and soak in the beauty of your surroundings. Take advantage of this rare opportunity to own a truly remarkable piece of real estate in Holmes County, Mississippi. With its location, charming camp house, barn, creek, and big whitetail, this property is a dream come true for those seeking a place of their own less than an hour from the Jackson Metro area. Call Mike Odom to make this slice of paradise your own!



**MIKE ODOM**  
REALTOR®

Office: 601.898.2772

Cell: 601.927.5018

MikeOdom@TomSmithLand.com



**A Real Estate Expert You Can Trust**

TomSmithLandandHomes.com

Information is believed to be accurate but not guaranteed.





## MIKE ODOM

REALTOR

Office: 601.898.2772

Cell: 601.927.5018

[MikeOdom@TomSmithLand.com](mailto:MikeOdom@TomSmithLand.com)



A Real Estate Expert You Can Trust

[TomSmithLandandHomes.com](http://TomSmithLandandHomes.com)

Information is believed to be accurate but not guaranteed.





# MIKE ODOM

REALTOR®

Office: 601.898.2772

Cell: 601.927.5018

[MikeOdom@TomSmithLand.com](mailto:MikeOdom@TomSmithLand.com)



A Real Estate Expert You Can Trust

[TomSmithLandandHomes.com](http://TomSmithLandandHomes.com)

Information is believed to be accurate but not guaranteed.





# MIKE ODOM

EDITOR

Office: 601.898.2772

Cell: 601.927.5018

[MikeOdom@TomSmithLand.com](mailto:MikeOdom@TomSmithLand.com)



A Real Estate Expert You Can Trust

[TomSmithLandandHomes.com](http://TomSmithLandandHomes.com)

Information is believed to be accurate but not guaranteed.





# MIKE ODOM

AGENT

Office: 601.898.2772

Cell: 601.927.5018

[MikeOdom@TomSmithLand.com](mailto:MikeOdom@TomSmithLand.com)



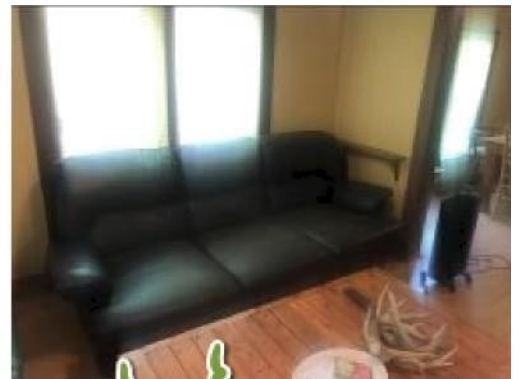
Expect More. Get More.

A Real Estate Expert You Can Trust

[TomSmithLandandHomes.com](http://TomSmithLandandHomes.com)

Information is believed to be accurate but not guaranteed.





**MIKE ODOM**  
REALTOR®

Office: 601.898.2772  
Cell: 601.927.5018

f1ikeOdom@TomSmithLand.com



**A Real Estate Expert You Can Trust**  
TomSmithLandandHomes.com

Information is believed to be accurate but not guaranteed.



# AERIAL MAP



[Click Here for an Interactive Map Link](#)

**MIKE ODOM**  
REALTOR®

Office: 601.898.2772

Cell: 601.927.5018

MikeOdom@TomSmithLand.com



**A Real Estate Expert You Can Trust**

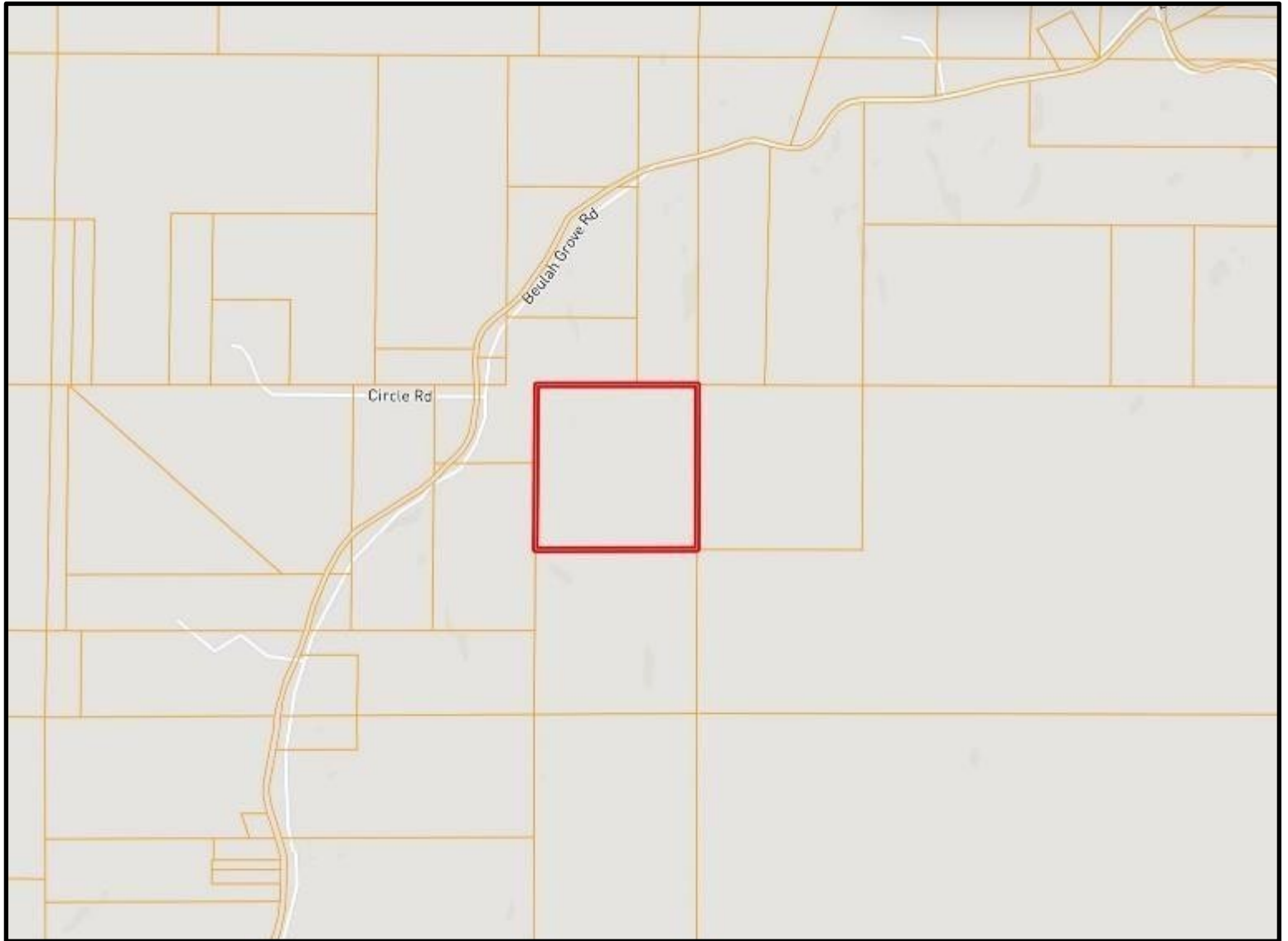
TomSmithLandandHomes.com

Information is believed to be accurate but not guaranteed.





# OWNERSHIP MAP



**MIKE ODOM**  
REALTOR®

Office: 601.898.2772

Cell: 601.927.5018

MikeOdom@TomSmithLand.com

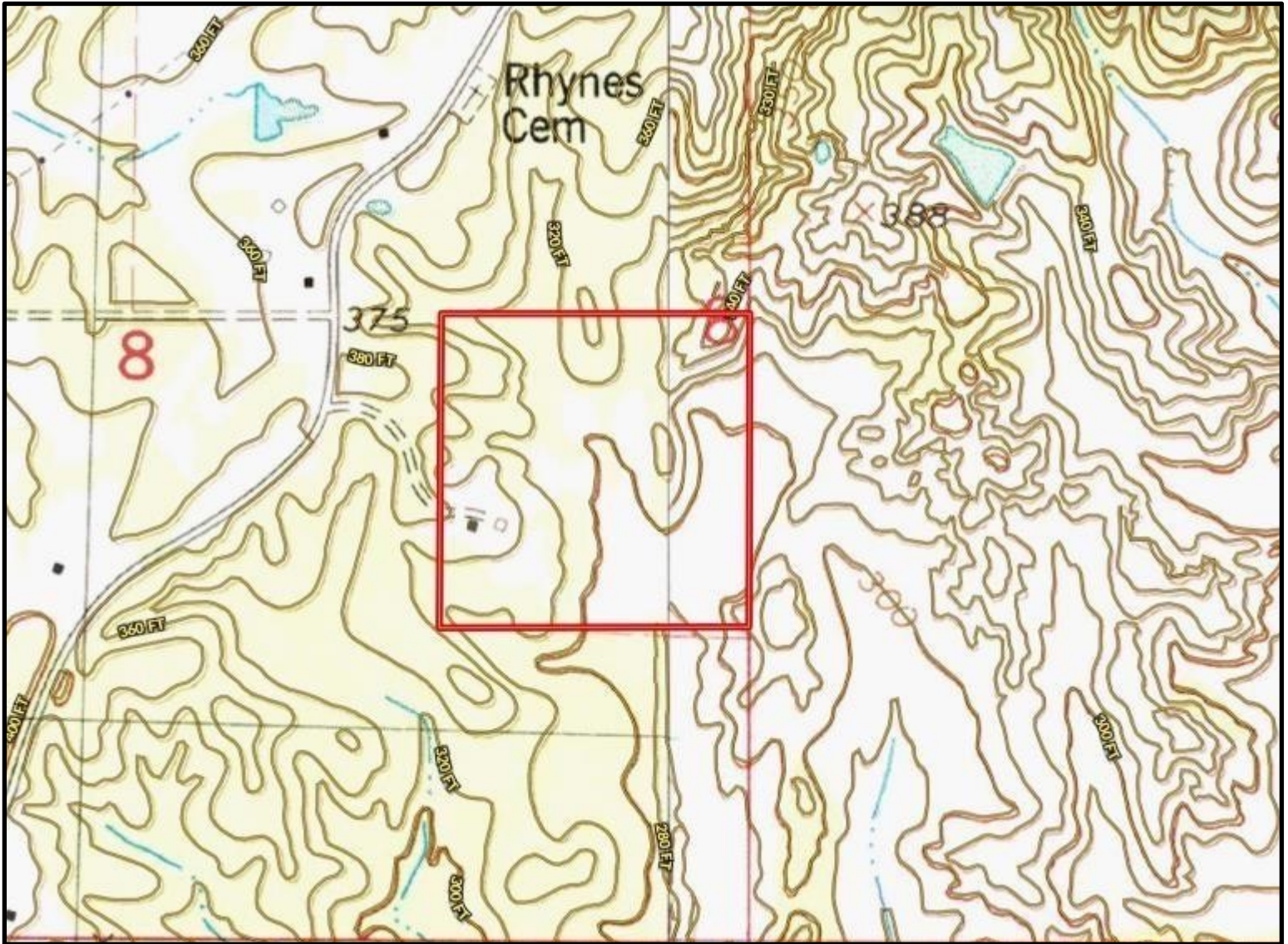


**A Real Estate Expert You Can Trust**  
TomSmithLandandHomes.com

Information is believed to be accurate but not guaranteed.



# TOPO MAP



**MIKE ODOM**  
REALTOR®

Office: 601.898.2772

Cell: 601.927.5018

MikeOdom@TomSmithLand.com



**A Real Estate Expert You Can Trust**

TomSmithLandandHomes.com

Information is believed to be accurate but not guaranteed.



# SOIL MAP



SOIL CODE	SOIL DESCRIPTION	ACRES	%	CPI	NCCPI	CAP
PrC2	Providence silt loam, 5 to 8 percent slopes, eroded	13.16	32.92	0	28	3e
Oa	Oaklimeter silt loam, 0 to 2 percent slopes, occasionally flooded, north	12.64	31.62	0	74	2w
SP	Smithdale-Providence association, 8 to 45 percent slopes	11.36	28.42	0	29	7e
MeC2	Memphis silt loam, 5 to 8 percent slopes, eroded	2.82	7.06	0	82	3e

**MIKE ODOM**  
REALTOR®

Office: 601.898.2772

Cell: 601.927.5018

MikeOdom@TomSmithLand.com



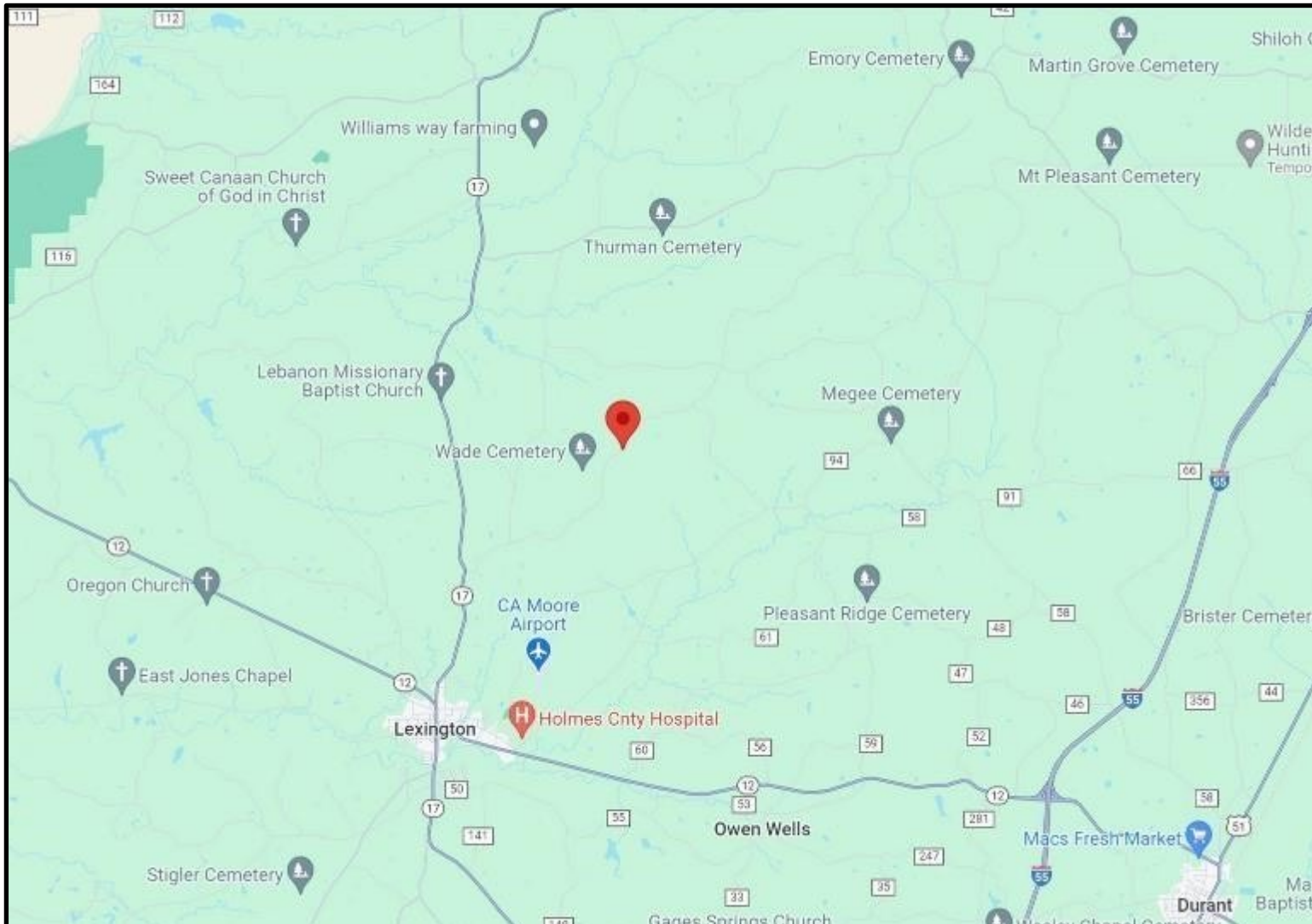
**A Real Estate Expert You Can Trust**

TomSmithLandandHomes.com

Information is believed to be accurate but not guaranteed.



# DIRECTIONAL MAP



**Directions from the intersection of Hwy 12 and Hwy 17 in Lexington, MS:** Travel Hwy 17 North for 2 miles. Turn right onto Beulah Grove Road. After 3.5 miles, the property entrance will be on the right. [GOOGLE MAP LINK](#)



**MIKE  
ODOM**  
REALTOR®

Office: 601.898.2772

Cell: 601.927.5018

MikeOdom@TomSmithLand.com



**A Real Estate Expert You Can Trust**

TomSmithLandandHomes.com

Information is believed to be accurate but not guaranteed.

