

DUPLEX IN CLEVELAND

315 SOUTH BOLIVAR AVENUE, CLEVELAND, MS

\$132,000



Each unit in this duplex rents for \$700, which would be \$1,400 in monthly income. Both sides are a one bedroom, one bathroom unit. The duplex is 1,496 ± SF on a 0.17 ± acre lot. If you are looking to add to your rental portfolio, call Tracey Bell for more details and to schedule your private showing.



**TRACEY
BELL**

MANAGING BROKER

Office: 662.441.2500

Cell: 662.719.4720

Tracey@TomSmithLand.com

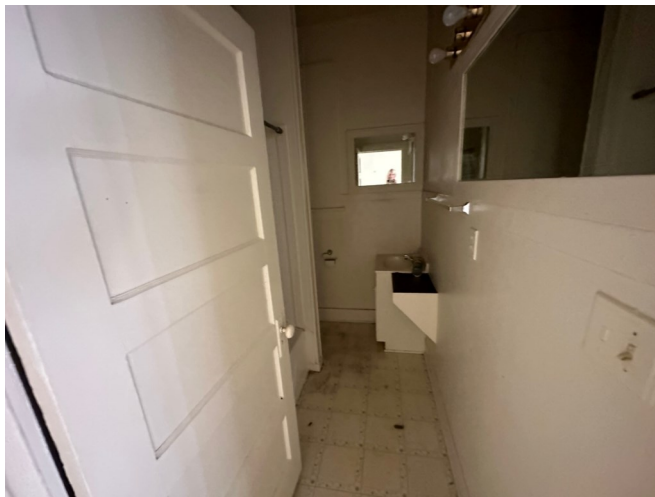


A Real Estate Expert You Can Trust

TomSmithLandandHomes.com

Information is believed to be accurate but not guaranteed.





**TRACEY
BELL**

MANAGING BROKER

Office: 662.441.2500

Cell: 662.719.4720

Tracey@TomSmithLand.com



A Real Estate Expert You Can Trust
TomSmithLandandHomes.com

Information is believed to be accurate but not guaranteed.



AERIAL MAP



[Click for Interactive Map](#)

TRACEY
BELL

MANAGING BROKER

Office: 662.441.2500

Cell: 662.719.4720

Tracey@TomSmithLand.com

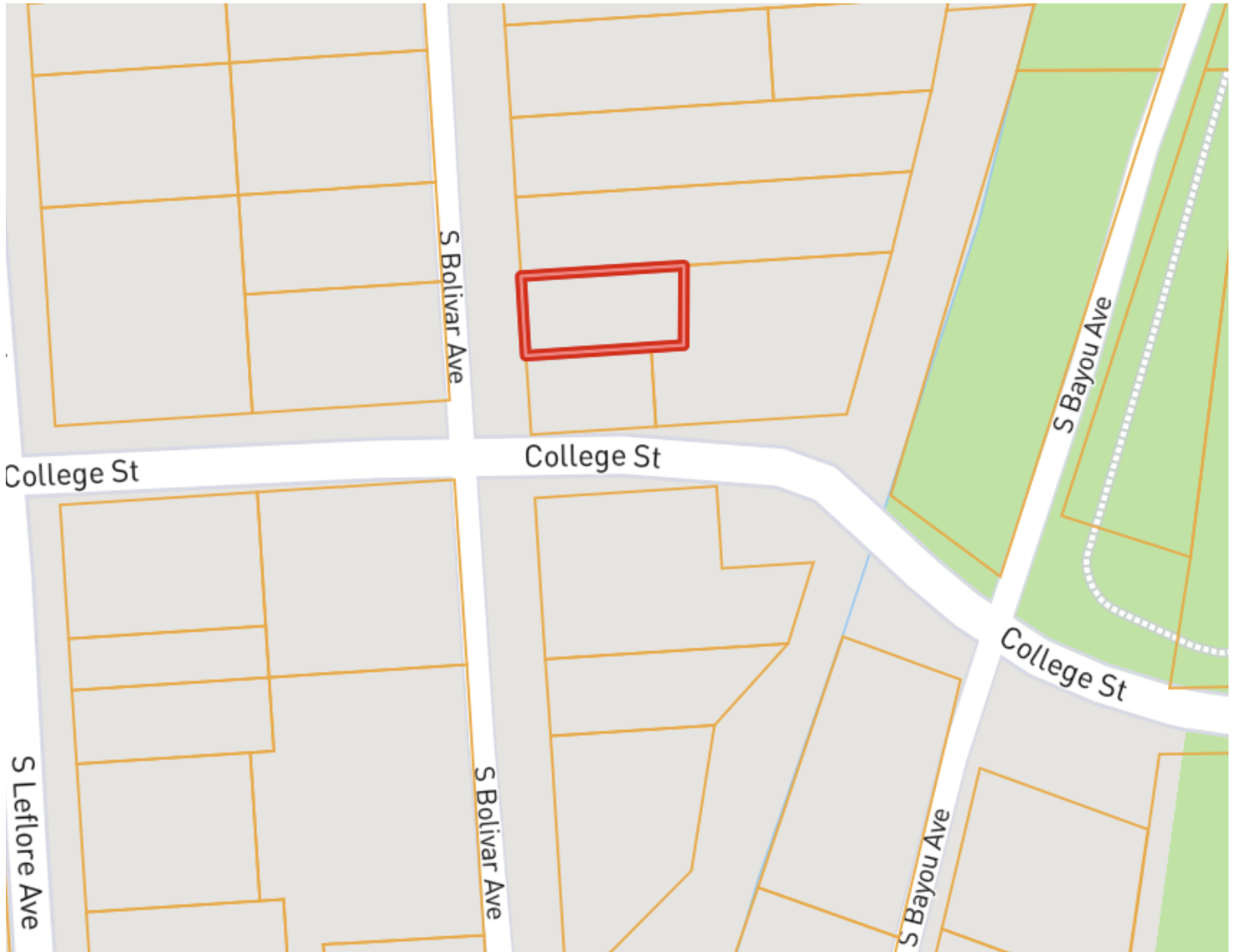


A Real Estate Expert You Can Trust
TomSmithLandandHomes.com

Information is believed to be accurate but not guaranteed.



OWNERSHIP MAP



**TRACEY
BELL**

MANAGING BROKER

Office: 662.441.2500

Cell: 662.719.4720

Tracey@TomSmithLand.com

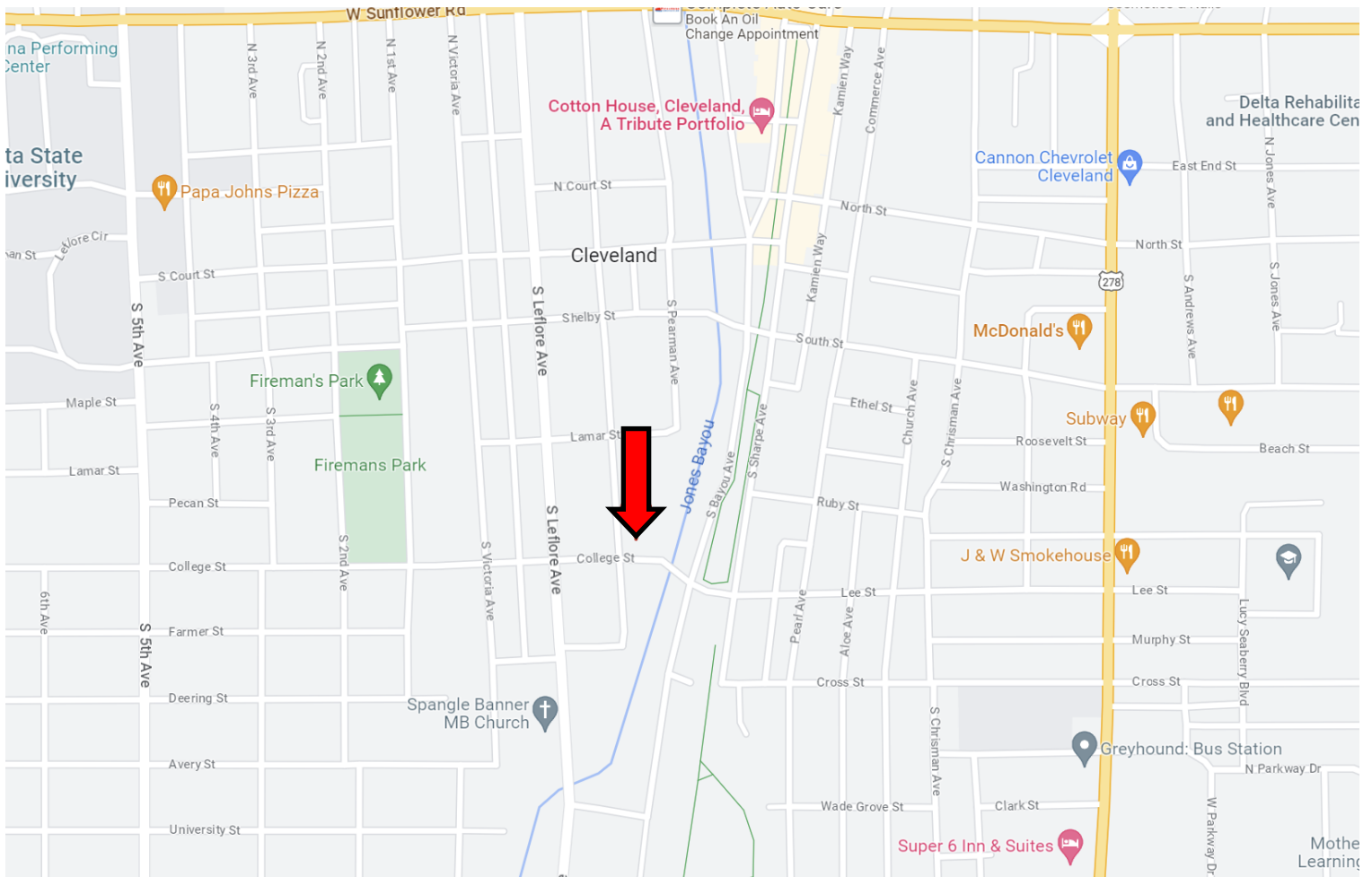


A Real Estate Expert You Can Trust
TomSmithLandandHomes.com

Information is believed to be accurate but not guaranteed.

LawReport
2011-2023
NATIONAL
BEST
BROKERAGES

DIRECTIONAL MAP



Address: 315 S Bolivar Avenue, Cleveland, MS 38732

Directions from Hwy 8 and Hwy 61 Cleveland, MS: Head west on Sunflower Road for approximately 0.5 miles then turn left onto N Bolivar Avenue. After 0.6 miles, the destination will be on the left. [Click for Google Maps.](#)

**TRACEY
BELL**
MANAGING BROKER
Office: 662.441.2500
Cell: 662.719.4720
Tracey@TomSmithLand.com



A Real Estate Expert You Can Trust
TomSmithLandandHomes.com

Information is believed to be accurate but not guaranteed.

