

1812 S. Broadway, Shelby, MS 38774

3 Bedrooms | 2 Bathrooms | 2,145± SF Home



\$160,000

- Ranch-Style Home in Bolivar County, MS
- Three Bedrooms, Two Bathrooms
- Situated on a 0.52± Acre Lot
- Detached Garage
- Den with Beautiful Windows and Built-ins
- Breakfast Nook
- Separate Man Cave
- Utility Room



**CHARLIE
HEINSZ**

REALTOR®

Office: 662.441.2500

Cell: 662.719.7218

Charlie@TomSmithLand.com



A Real Estate Expert You Can Trust

TomSmithLandandHomes.com

Information is believed to be accurate but not guaranteed.





This three-bedroom, two-bathroom ranch-style home sits on a 0.52± acre lot with a detached garage and is located in Shelby, Bolivar County, MS. The den features beautiful windows and built-in bookshelves. The home also features a breakfast nook, a separate man cave, and a utility room. Give Charlie a call to schedule your showing!



CHARLIE HEINSZ
REALTOR®
Office: 662.441.2500
Cell: 662.719.7218
Charlie@TomSmithLand.com



A Real Estate Expert You Can Trust
TomSmithLandandHomes.com

Information is believed to be accurate but not guaranteed.





CHARLIE HEINSZ

REALTOR®

Office: 662.441.2500

Cell: 662.719.7218

Charlie@TomSmithLand.com



A Real Estate Expert You Can Trust

TomSmithLandandHomes.com

Information is believed to be accurate but not guaranteed.





CHARLIE HEINSZ
 REALTOR®
 Office: 662.441.2500
 Cell: 662.719.7218
 Charlie@TomSmithLand.com



A Real Estate Expert You Can Trust
 TomSmithLandandHomes.com

Information is believed to be accurate but not guaranteed.





CHARLIE HEINSZ
REALTOR®
Office: 662.441.2500
Cell: 662.719.7218
Charlie@TomSmithLand.com



A Real Estate Expert You Can Trust
TomSmithLandandHomes.com

Information is believed to be accurate but not guaranteed.





CHARLIE HEINSZ
REALTOR®
Office: 662.441.2500
Cell: 662.719.7218
Charlie@TomSmithLand.com



A Real Estate Expert You Can Trust
TomSmithLandandHomes.com

Information is believed to be accurate but not guaranteed.





CHARLIE HEINSZ

REALTOR®

Office: 662.441.2500

Cell: 662.719.7218

Charlie@TomSmithLand.com



A Real Estate Expert You Can Trust

TomSmithLandandHomes.com

Information is believed to be accurate but not guaranteed.



AERIAL MAP



[Click Here for an Interactive Map](#)

CHARLIE HEINSZ
REALTOR®

Office: 662.441.2500

Cell: 662.719.7218

Charlie@TomSmithLand.com



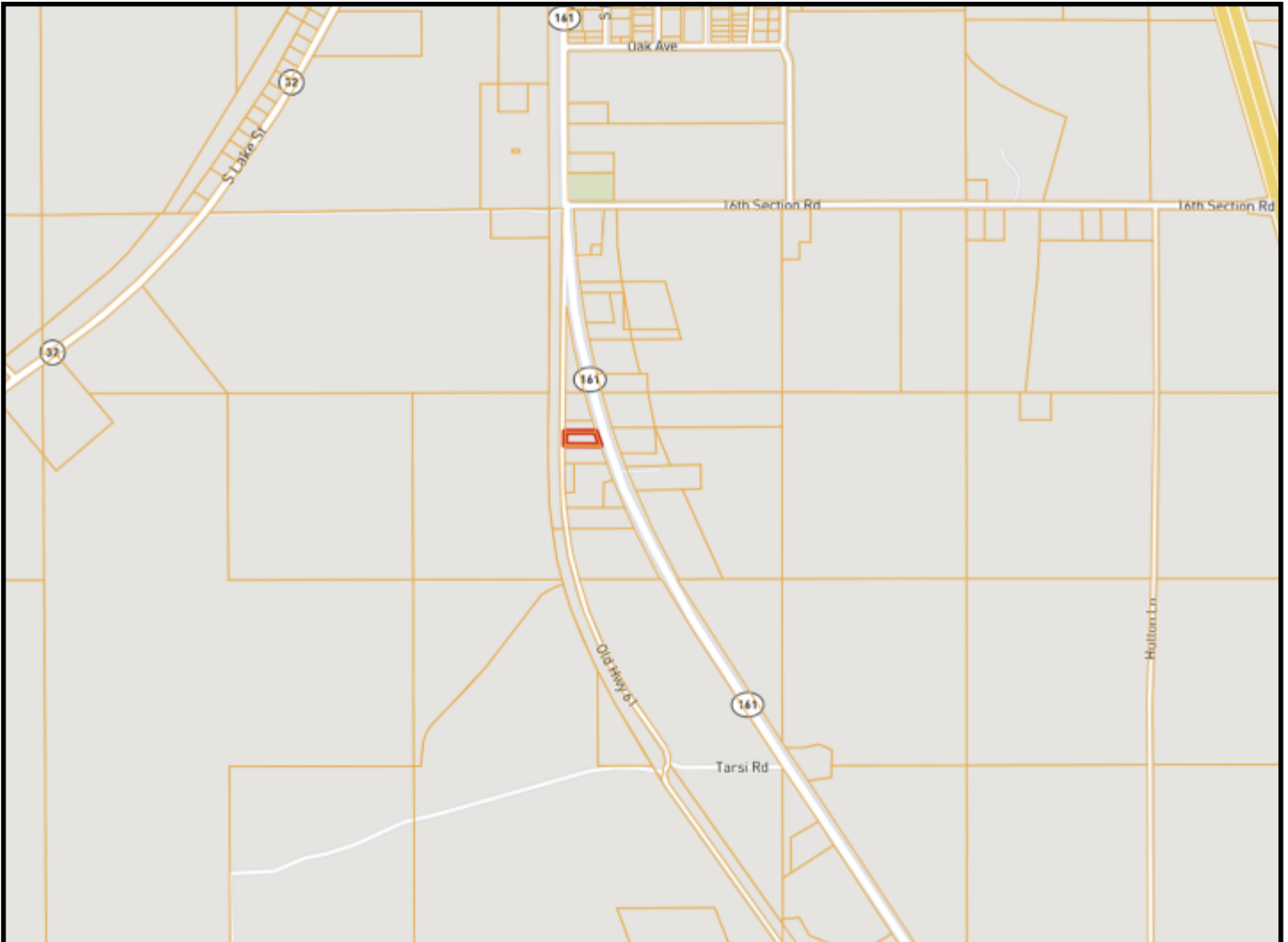
A Real Estate Expert You Can Trust

TomSmithLandandHomes.com

Information is believed to be accurate but not guaranteed.



OWNERSHIP MAP



CHARLIE HEINSZ

REALTOR®

Office: 662.441.2500

Cell: 662.719.7218

Charlie@TomSmithLand.com



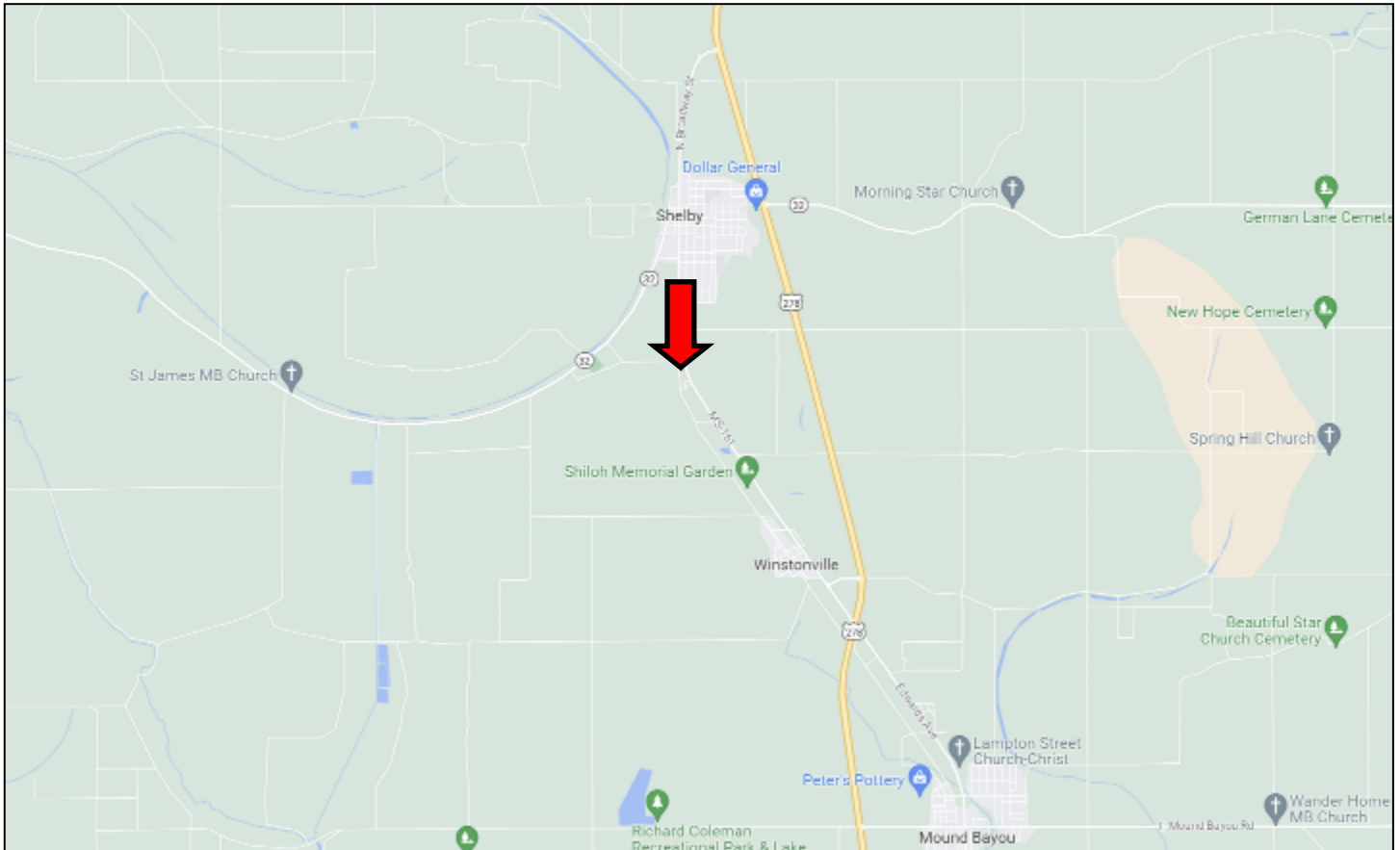
A Real Estate Expert You Can Trust

TomSmithLandandHomes.com

Information is believed to be accurate but not guaranteed.



DIRECTIONAL MAP



1812 South Broadway Street, Shelby, Mississippi 38774

Directions from Cleveland, MS: Travel North on Hwy 61 for 11.4 miles, then turn left onto Moody Road. Travel 0.3 miles, then turn right onto Martin Luther King Memorial Drive/MS-161. After 2.1 miles, the home will be on the left. **[GOOGLE MAP LINK](#)**



CHARLIE
HEINSZ
REALTOR®

Office: 662.441.2500

Cell: 662.719.7218

Charlie@TomSmithLand.com



A Real Estate Expert You Can Trust

TomSmithLandandHomes.com

Information is believed to be accurate but not guaranteed.

