

# Corner Lot Home

Bolivar County, MS



809 South Fifth Ave. Cleveland, MS 38732

\$274,950

Take a look at this 2,749 sqft heated and cooled, three bedroom, three bathroom house sitting on a corner lot in Bolivar County, MS, in the heart of Cleveland. Upstairs offers a full bathroom with a jacuzzi tub, closet, and a washer and dryer hookup. Downstairs has a formal living room, kitchen, dining room, breakfast room, entertainment living room, primary bed and bath, guest room, and renovated bathroom. The kitchen has been renovated with custom-made cabinets, plenty of storage, and an oversized walk-in pantry. There's a lovely patio in the backyard looking over the koi pond. As a bonus, the two-car garage has the perfect spot upstairs that would be a great mother-in-law suite or flex room. Call Anthony today for your private showing!

**Directions from the Intersection of Hwy 8 and Hwy 61 Cleveland, MS:** Travel West on Hwy 8 for approximately 1.0 miles. Turn left onto N. Fifth Ave. After 0.8 miles, the house will be on the left on the corner of University Street.

**Click for Google Maps.**



ANTHONY  
**STEEN**

REALTOR®

Office: 662.441.2500

Cell: 662.645.5151

Anthony@TomSmithLand.com



A Real Estate Expert You Can Trust

TomSmithLandandHomes.com

Information is believed to be accurate but not guaranteed.





**ANTHONY STEEN**

REALTOR®

Office: 662.441.2500

Cell: 662.645.5151

Anthony@TomSmithLand.com



**A Real Estate Expert You Can Trust**

TomSmithLandandHomes.com

Information is believed to be accurate but not guaranteed.





**ANTHONY STEEN**

REALTOR®

Office: 662.441.2500

Cell: 662.645.5151

Anthony@TomSmithLand.com



**A Real Estate Expert You Can Trust**

TomSmithLandandHomes.com

Information is believed to be accurate but not guaranteed.





**ANTHONY STEEN**

REALTOR®

Office: 662.441.2500

Cell: 662.645.5151

Anthony@TomSmithLand.com



**A Real Estate Expert You Can Trust**

TomSmithLandandHomes.com

Information is believed to be accurate but not guaranteed.



# MOTHER IN LAW SUITE



**ANTHONY STEEN**

REALTOR®

Office: 662.441.2500

Cell: 662.645.5151

Anthony@TomSmithLand.com



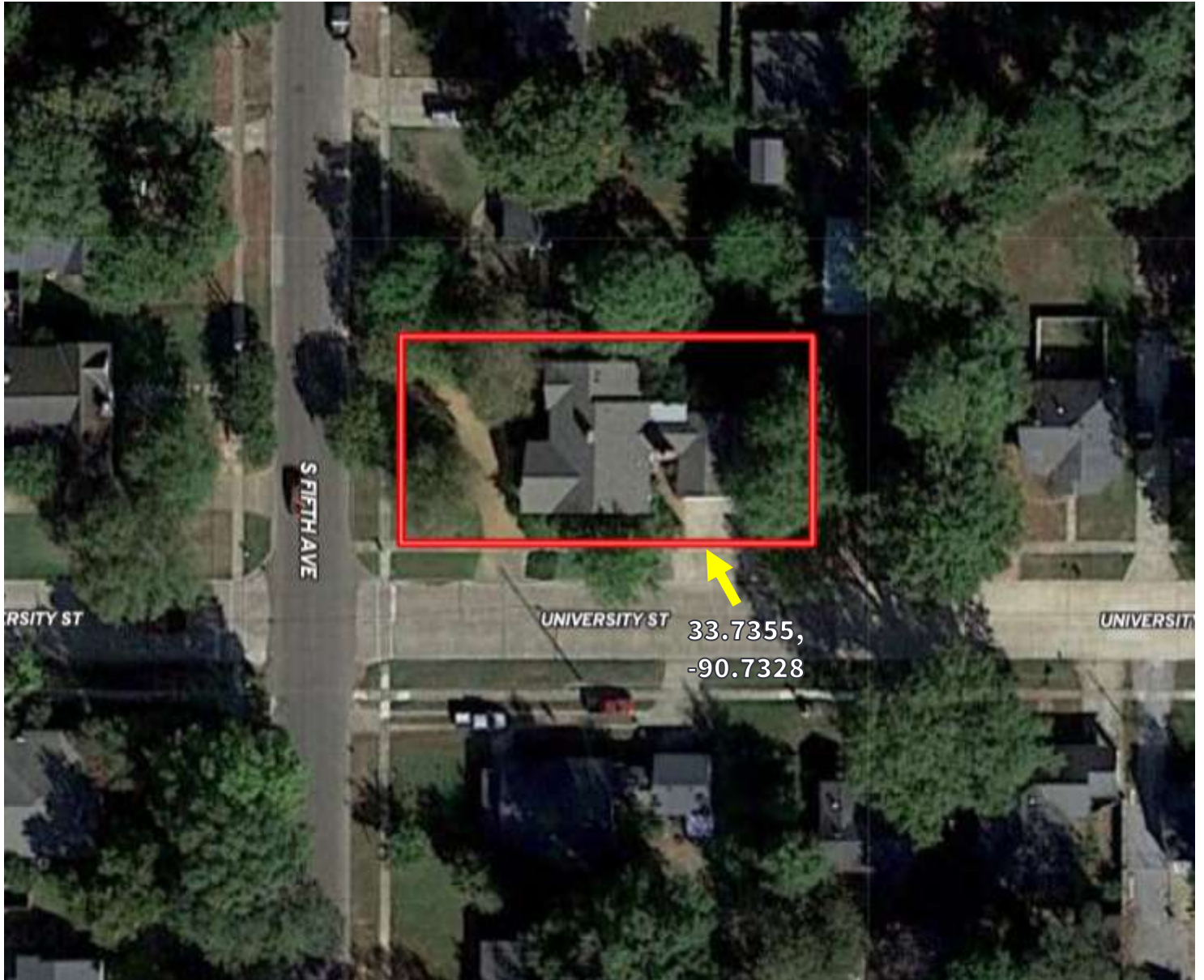
**A Real Estate Expert You Can Trust**

TomSmithLandandHomes.com

Information is believed to be accurate but not guaranteed.

2011-2023  
BEST  
BROKERAGE

# AERIAL MAP



[Click for Interactive Map](#)

**ANTHONY STEEN**  
REALTOR®

Office: 662.441.2500

Cell: 662.645.5151

Anthony@TomSmithLand.com

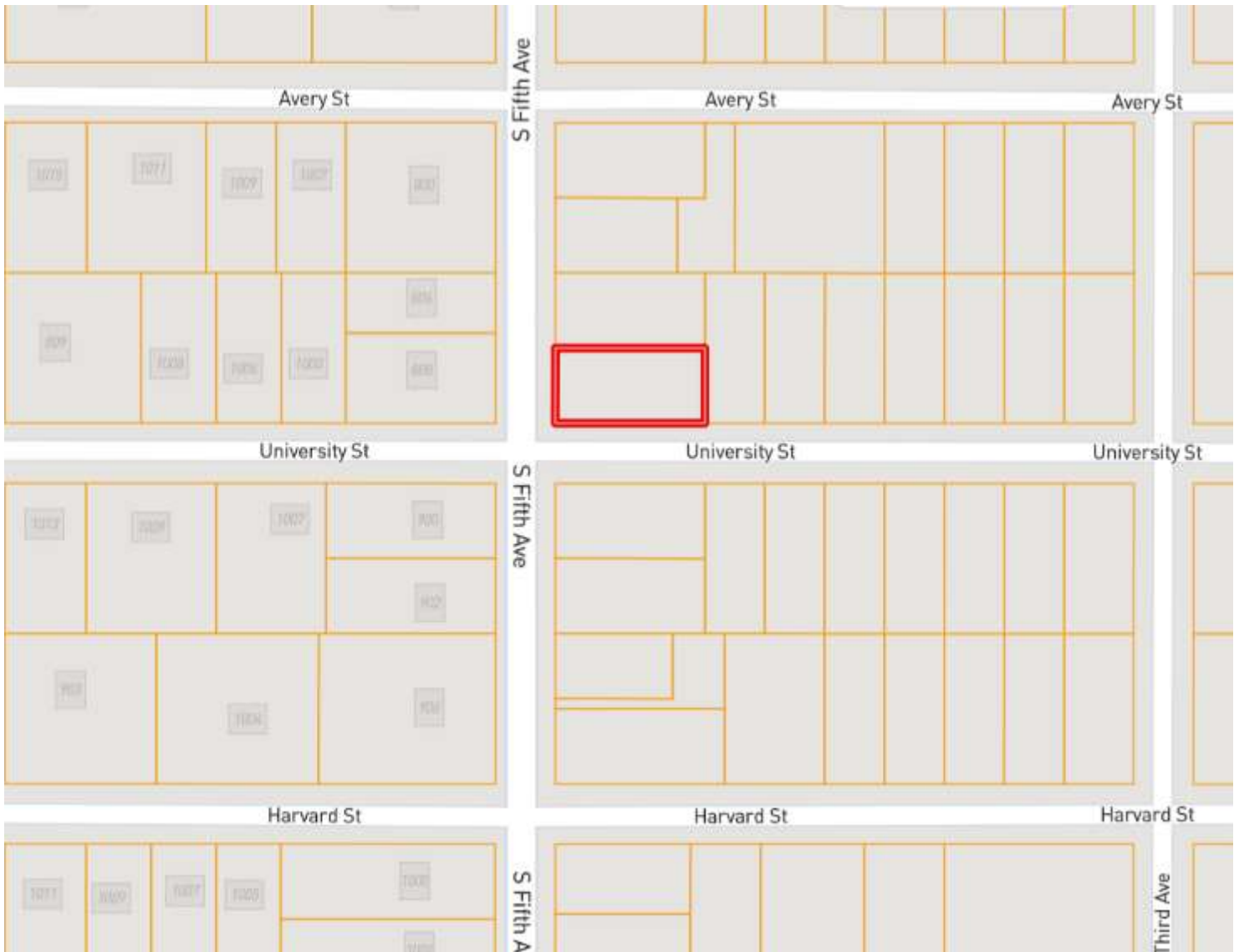


**A Real Estate Expert You Can Trust**  
TomSmithLandandHomes.com

Information is believed to be accurate but not guaranteed.



# OWNERSHIP MAP



LINDSAY WILLIAMS  
REALTOR®

O: 662.441.2500 | C: 662.719.8118  
Lindsay@TomSmithLand.com



CHARLIE HEINSZ  
REALTOR®

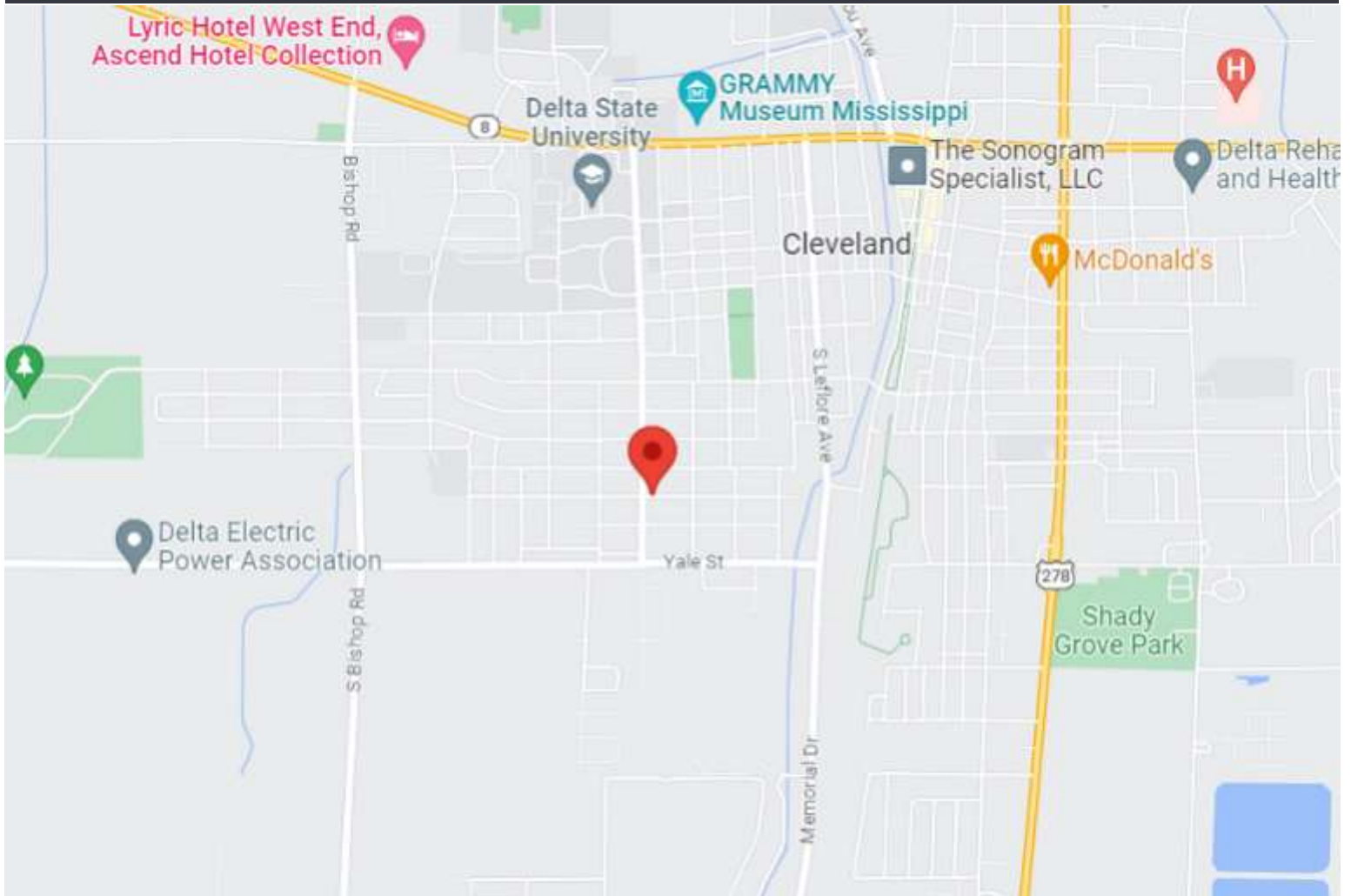
O: 662.441.2500 | C: 662.719.7218  
Charlie@TomSmithLand.com

[TomSmithLandandHomes.com](http://TomSmithLandandHomes.com)

Information is believed to be accurate but not guaranteed.



# DIRECTIONAL MAP



**Address: 809 South 5th Avenue Cleveland, MS 38732**

**Directions from the Intersection of Hwy 8 and Hwy 61 Cleveland, MS:** Travel West on Hwy 8 for approximately 1.0 miles. Turn left onto N. Fifth Ave. After 0.8 miles, the house will be on the left on the corner of University Street. **[Click for Google Maps.](#)**



**ANTHONY  
STEEN**

REALTOR®

Office: 662.441.2500

Cell: 662.645.5151

[Anthony@TomSmithLand.com](mailto:Anthony@TomSmithLand.com)



**A Real Estate Expert You Can Trust**

[TomSmithLandandHomes.com](http://TomSmithLandandHomes.com)

Information is believed to be accurate but not guaranteed.

