

Lot 34 in the Pleasant Hill Estates Subdivision Marshall County, MS



\$29,995

Check out this 2.70+/- acre wooded lot on the paved Leonard Lane in the beautiful Pleasant Hill Estates Subdivision in Marshall County, MS. The property is conveniently located just off Highway 311 between Holly Springs and the desirable Mount Pleasant area. The topography is rolling with a beautiful building site. The protective covenants allow for one single-family residence per lot with a minimum of 2,000 square feet.

This is the perfect place to build your dream home. Don't miss this opportunity. Call Tom today!

Directions from the intersection of Hwy 4 and Hwy 311 in Holly Springs, MS: Travel Hwy 311 north for 7.4 miles. Turn left onto Pleasant Hill Drive and travel .6 miles. Turn left to Dollie Irene Road and travel .2 miles. Turn left onto Leonard Lane. After 500 feet the property will be on the right. [GOOGLE MAP LINK](#)



**TOM
WISEMAN**
ASSOCIATE BROKER
Office: 662.268.6333
Cell: 662.317.0467
TWiseman@TomSmithLand.com



A Real Estate Expert You Can Trust

TomSmithLandandHomes.com

Information is believed to be accurate but not guaranteed.





TOM WISEMAN

ASSOCIATE BROKER

Office: 662.268.6333

Cell: 662.317.0467

TWiseman@TomSmithLand.com



A Real Estate Expert You Can Trust

TomSmithLandandHomes.com

Information is believed to be accurate but not guaranteed.



OWNERSHIP MAP



TOM WISEMAN

ASSOCIATE BROKER

Office: 662.268.6333

Cell: 662.317.0467

TWiseman@TomSmithLand.com



A Real Estate Expert You Can Trust

TomSmithLandandHomes.com

Information is believed to be accurate but not guaranteed.



AERIAL MAP



[CLICK HERE FOR AN INTERACTIVE MAP LINK](#)

TOM WISEMAN

ASSOCIATE BROKER

Office: 662.268.6333

Cell: 662.317.0467

TWiseman@TomSmithLand.com



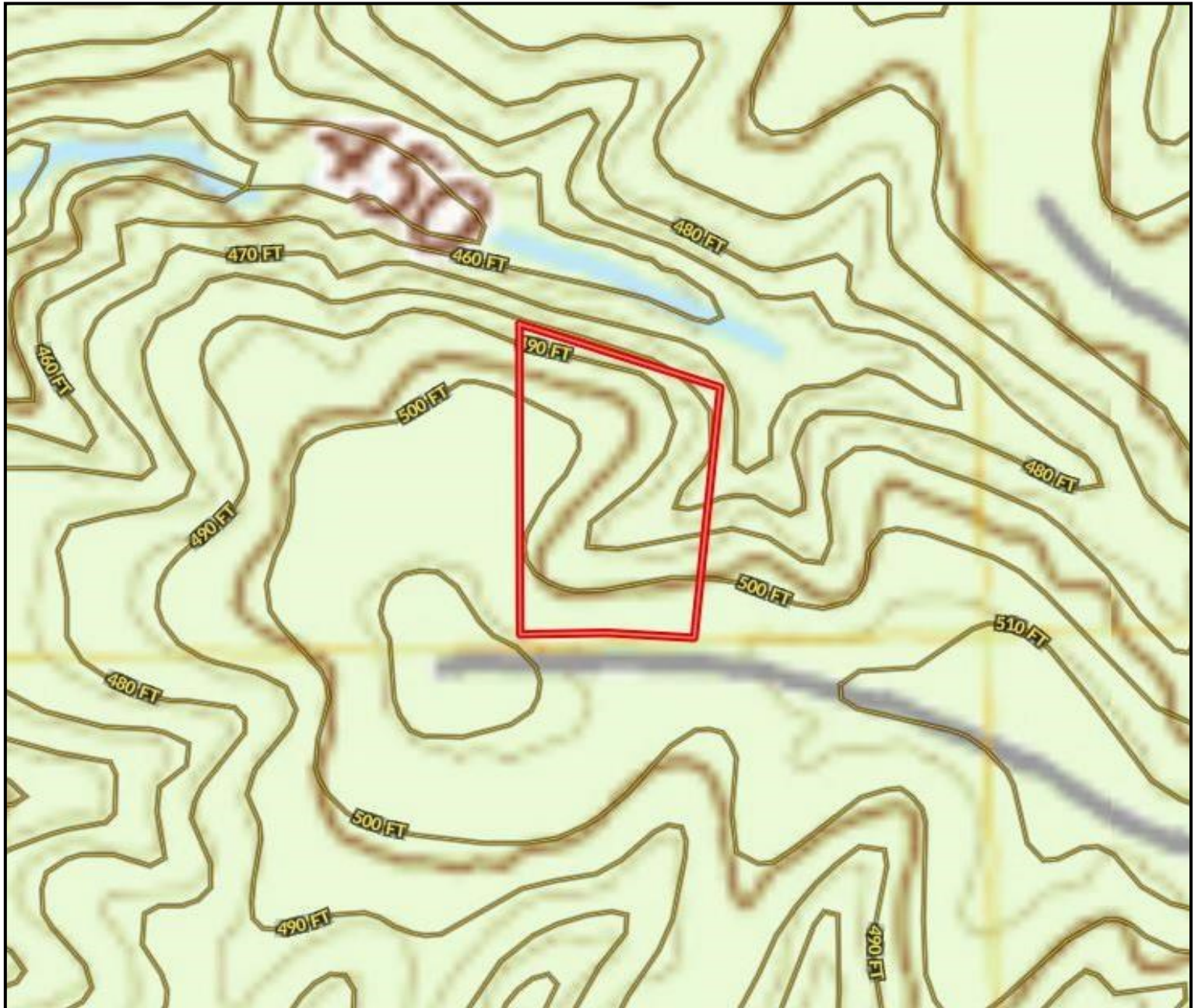
A Real Estate Expert You Can Trust

TomSmithLandandHomes.com

Information is believed to be accurate but not guaranteed.



TOPO MAP



TOM WISEMAN

ASSOCIATE BROKER

Office: 662.268.6333

Cell: 662.317.0467

TWiseman@TomSmithLand.com



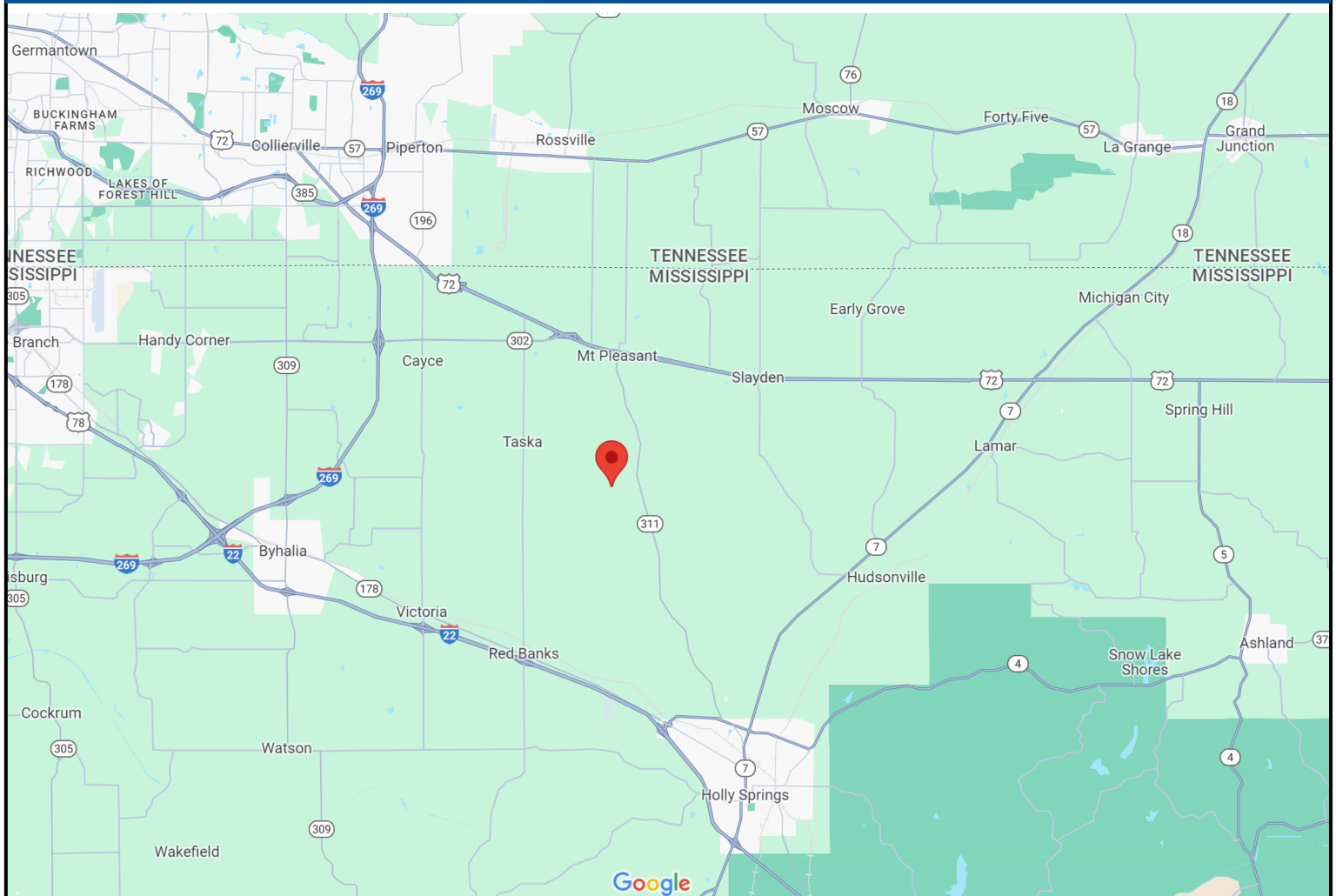
A Real Estate Expert You Can Trust

TomSmithLandandHomes.com

Information is believed to be accurate but not guaranteed.



DIRECTIONAL MAP



Directions from the intersection of Hwy 4 and Hwy 311 in Holly Springs, MS: Travel Hwy 311 north for 7.4 miles. Turn left onto Pleasant Hill Drive and travel .6 miles. Turn left to Dollie Irene Road and travel .2 miles. Turn left onto Leonard Lane. After 500 feet the property will be on the right. [GOOGLE MAP LINK](#)



**TOM
WISEMAN**
ASSOCIATE BROKER
Office: 662.268.6333
Cell: 662.317.0467
TWiseman@TomSmithLand.com



A Real Estate Expert You Can Trust

TomSmithLandandHomes.com

Information is believed to be accurate but not guaranteed.

