

STUNNING FAMILY HOME

6.81± ACRES IN ATTALA COUNTY, MS



\$580,000

This stunning five-bedroom, four-and-a-half-bath home on 6.81± acres in Attala County just outside Kosciusko is filled with charm, beautiful finishes, and fantastic detail. The kitchen has granite countertops, an incredible eat-at-island, and a massive pantry. A large keeping/family room is adjacent to the kitchen with a fireplace and tons of shelf space. The towering ceilings downstairs give this home a grand feel without losing its warmth. The primary bedroom is downstairs, with the remaining bedrooms upstairs accessed by two beautiful staircases, one from the main foyer and the other adjacent to the den and kitchen. There are solid wood doors throughout the house and walk-in closets galore! The upstairs movie room is great for watching a movie or a ballgame. There is plenty of storage with multiple attic access points on the second floor and a walk-up attic that could be finished into a third level. The vast primary bedroom features an ensuite bath that is just beautiful! Plenty of closet space with a large dressing area and soaring ceilings. The upstairs bedrooms feature one Jack and Jill bath, and the remaining two have private full baths. The house also features a pool with a pool house and an outdoor fireplace with a gas starter. The large back deck is perfect for relaxing or cooking out and watching the sunset. The large lot provides plenty of privacy and has enough space that you don't feel cramped by any neighbors, and it would be great for that "mini farm" you have always wanted! Take advantage of your opportunity to own this fantastic home with tons of curb appeal and unbelievable charm. Call Mike Odom today to schedule your tour!

2275 Attala Rd 1107 #1108 Kosciusko, MS 39090



**MIKE
ODOM**
REALTOR®

Office: 601.898.2772

Cell: 601.927.5018

MikeOdom@TomSmithLand.com



A Real Estate Expert You Can Trust

TomSmithLandandHomes.com

Information is believed to be accurate but not guaranteed.





MIKE ODOM
REALTOR®

Office: 601.898.2772
Cell: 601.927.5018

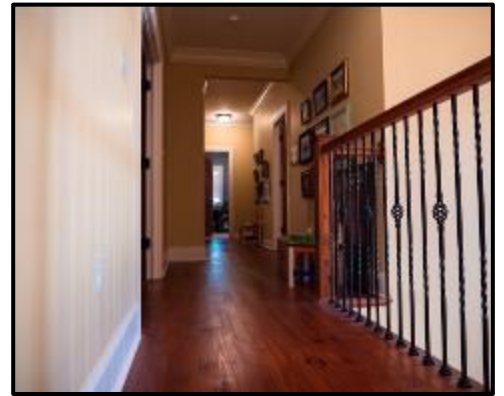
MikeOdom@TomSmithLand.com



A Real Estate Expert You Can Trust
TomSmithLandandHomes.com

Information is believed to be accurate but not guaranteed.





MIKE ODOM
REALTOR®

Office: 601.898.2772
Cell: 601.927.5018

MikeOdom@TomSmithLand.com



A Real Estate Expert You Can Trust
TomSmithLandandHomes.com

Information is believed to be accurate but not guaranteed.





MIKE ODOM
REALTOR®

Office: 601.898.2772
Cell: 601.927.5018

MikeOdom@TomSmithLand.com



A Real Estate Expert You Can Trust
TomSmithLandandHomes.com

Information is believed to be accurate but not guaranteed.



AERIAL MAP



[CLICK HERE FOR AN INTERACTIVE MAP](#)

MIKE ODOM
REALTOR®

Office: 601.898.2772

Cell: 601.927.5018

MikeOdom@TomSmithLand.com

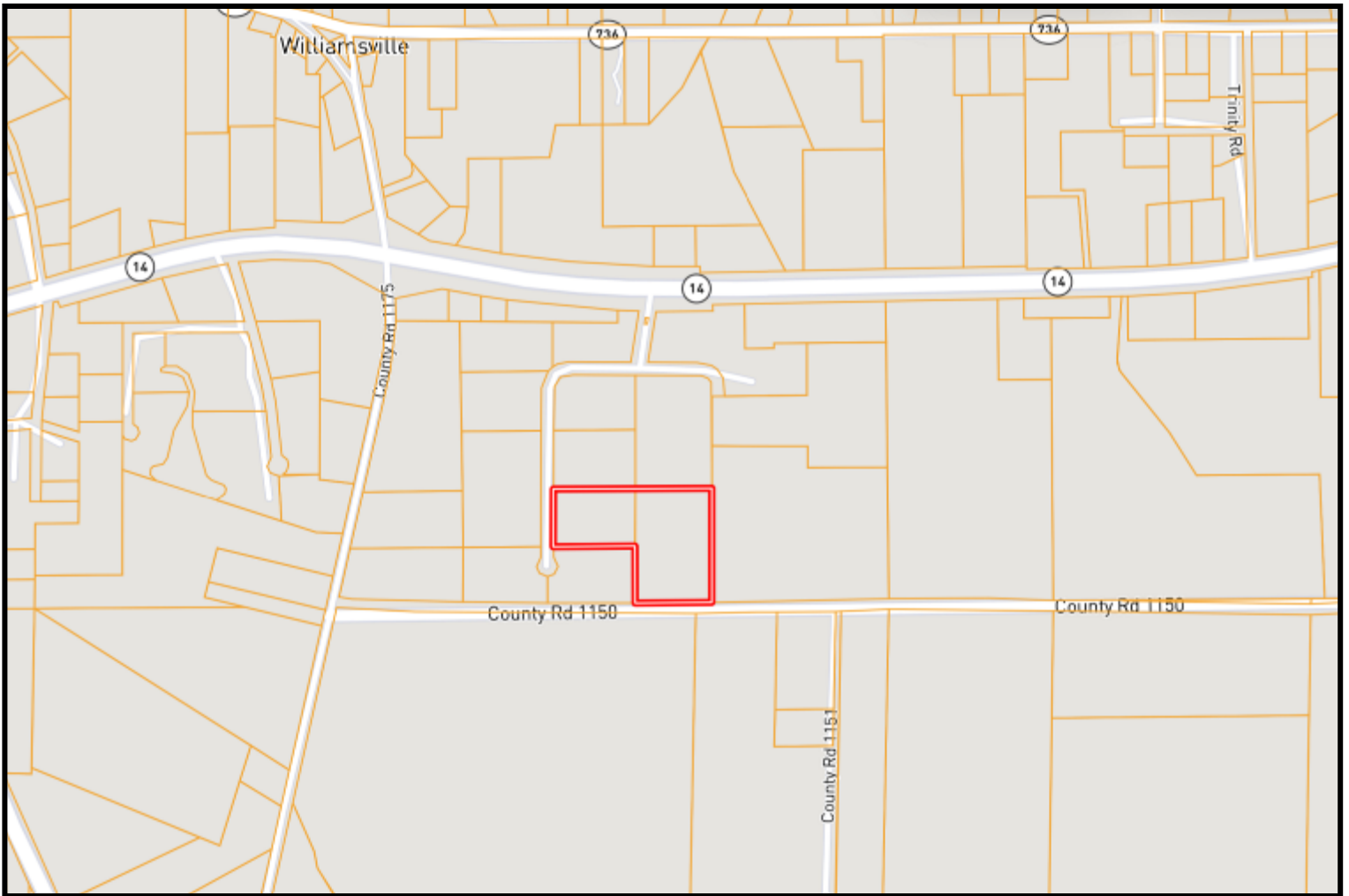


A Real Estate Expert You Can Trust
TomSmithLandandHomes.com

Information is believed to be accurate but not guaranteed.



OWNERSHIP MAP



MIKE ODOM
REALTOR®

Office: 601.898.2772
Cell: 601.927.5018

MikeOdom@TomSmithLand.com

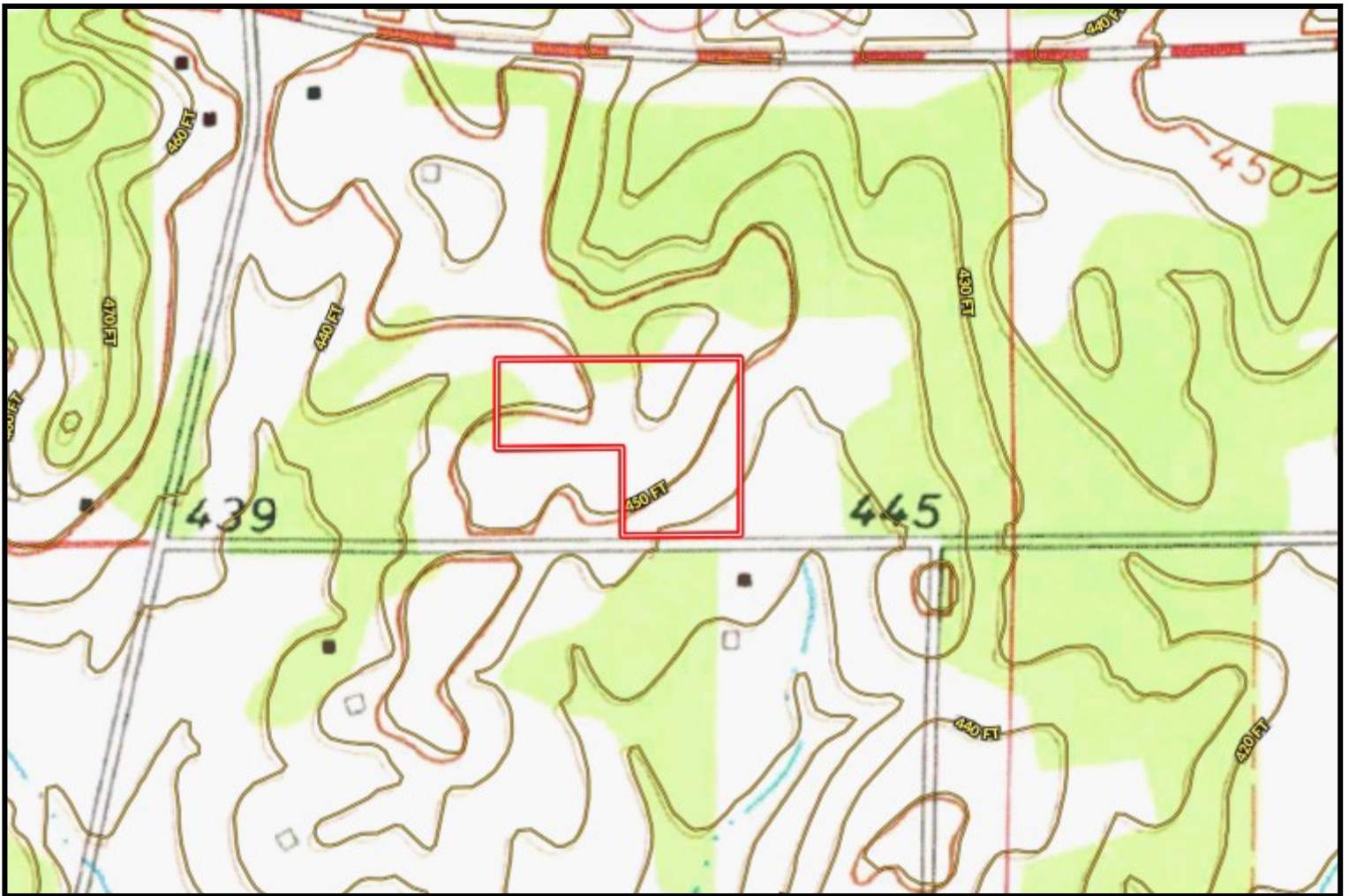


A Real Estate Expert You Can Trust
TomSmithLandandHomes.com

Information is believed to be accurate but not guaranteed.



TOPOGRAPHY MAP



MIKE ODOM
REALTOR®

Office: 601.898.2772

Cell: 601.927.5018

MikeOdom@TomSmithLand.com



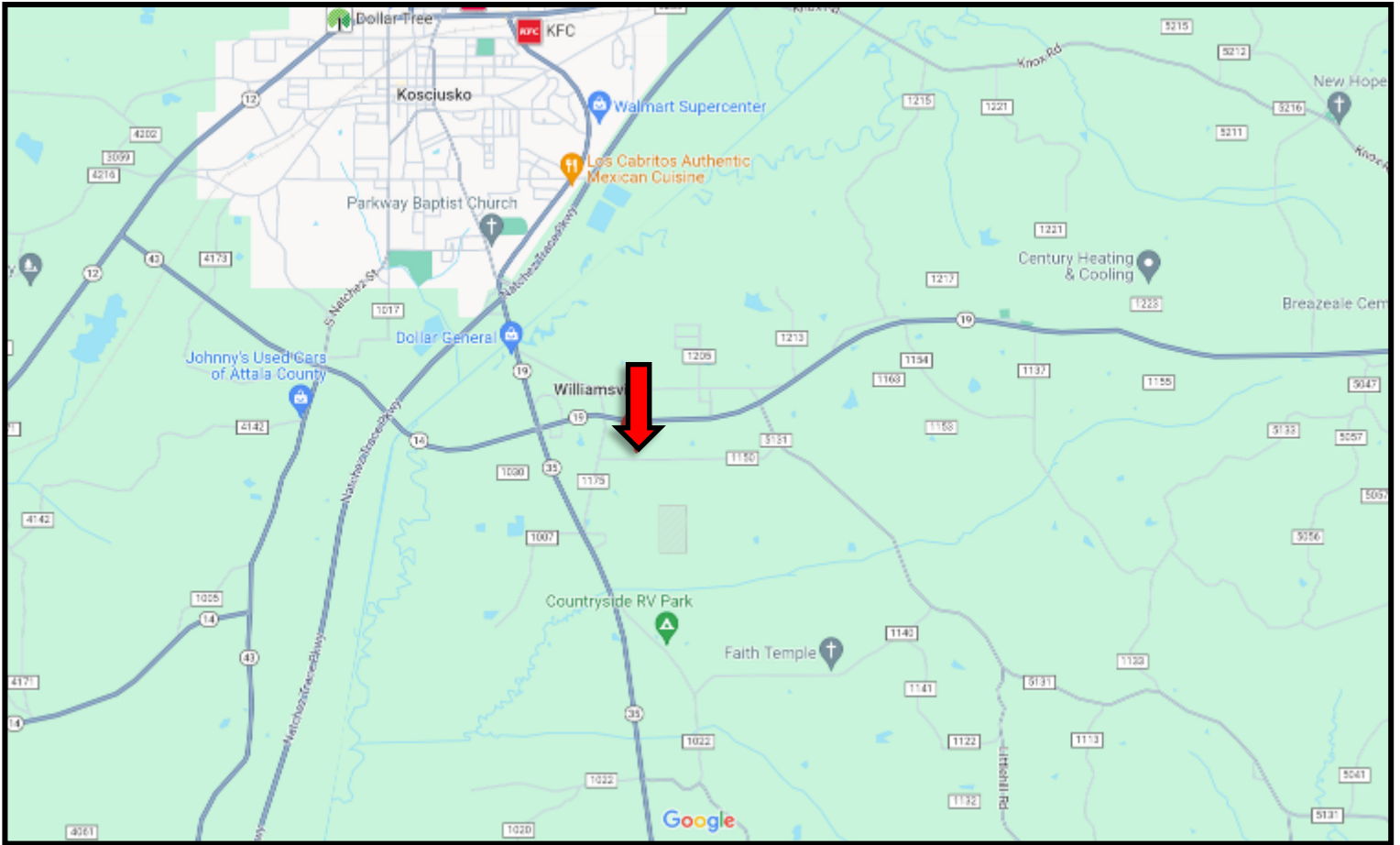
A Real Estate Expert You Can Trust

TomSmithLandandHomes.com

Information is believed to be accurate but not guaranteed.



DIRECTIONAL MAP



Directions from Hwy 35 and Hwy 19 in Williamsville, MS: Travel Hwy 14/Hwy 19 S for .7 miles. Turn right on Attala Rd. 1007. After .3 miles, the home will be on your left. [GOOGLE MAP LINK](#)

2275 Attala Rd 1107 #1108 Kosciusko, MS 39090



**MIKE
ODOM**
REALTOR®

Office: 601.898.2772

Cell: 601.927.5018

MikeOdom@TomSmithLand.com



A Real Estate Expert You Can Trust

TomSmithLandandHomes.com

Information is believed to be accurate but not guaranteed.

