

# 145 Bradfield Road Madison, MS 39110

## \$344,400



- Meticulously Maintained 4-Bed, 3-Bath Home with Exceptional Quality
- Tranquil Primary Suite with Trey Ceiling, Jetted Tub, and Private Patio
- Spacious Kitchen with Corner Sink, Built-in China Cabinet, and Ample Storage
- Recent Updates: Fresh Paint, New AC/Heat, Stove, and Flooring



**CLAY  
SIMMONS**  
REALTOR®

Office: 601.898.2772

Cell: 601.672.6864

Clay@TomSmithHomes.com



## A Real Estate Expert You Can Trust

TomSmithLandandHomes.com

Information is believed to be accurate but not guaranteed.



# 145 Bradfield Road Madison, MS 39110



Step into a world of exceptional quality and unparalleled livability with this exquisite home in Madison County, MS. Crafted by its original owners, this property has been meticulously maintained and lovingly cared for. Boasting four bedrooms and three baths, it showcases many delightful details throughout. As you enter the home, beautiful hardwood floors warmly welcome you into the spacious foyer, setting the tone for what lies beyond. The open and expansive great room is adorned with crown molding, exemplifying the attention to detail throughout the house.

The fine craftsmanship extends to transom molding over doors and framed mirrors, adding elegance to every corner. The main suite is a true sanctuary, featuring a tray ceiling and a comfortable sitting area. Step outside through your private entrance onto the pergola-covered patio or unwind in the deep jetted tub, making relaxation after a long day a breeze. Two generously sized secondary bedrooms on the main floor offer ample closet space and versatility. Upstairs, a large guest bedroom awaits, complete with its own bathroom. This space is perfect for accommodating guests, creating a playroom for the family, or hosting memorable teen gatherings. Recent updates include fresh paint in most bedrooms and the kitchen and new central AC/Heat units recently installed within the last two years. A brand-new stove and oven have been added to the kitchen, complementing the newly installed flooring in all three guest bedrooms. The kitchen features an abundance of counter and cabinet space, with a unique corner sink that adds inviting charm. A built-in china cabinet adds convenience, while the spacious pantry can easily store all your supplies. The refrigerator stays with the home, providing added value. Prepare to be amazed by the garage, which accommodates two cars while offering an exceptional wall of cabinets and counter space, a feature you genuinely appreciate to keep your belongings clean and organized. Outside, the backyard is your private oasis, enclosed by a complete wood fence. Beyond the fence lies a wooded green space, ensuring ultimate privacy. Relax on the pergola-covered patio in the morning, read a book while your children enjoy playing in their large backyard, and savor moments of serenity. This home is an absolute must-see, so take advantage of it. Call today to schedule your private tour and discover the unmatched comfort and quality that awaits you. You'll be glad you did. Give Clay a call today to schedule your private showing!



**CLAY  
SIMMONS**  
REALTOR®

Office: 601.898.2772

Cell: 601.672.6864

[Clay@TomSmithHomes.com](mailto:Clay@TomSmithHomes.com)



## A Real Estate Expert You Can Trust

[TomSmithLandandHomes.com](http://TomSmithLandandHomes.com)

Information is believed to be accurate but not guaranteed.







**CLAY SIMMONS**

REALTOR®

Office: 601.898.2772

Cell: 601.672.6864

Clay@TomSmithHomes.com



**A Real Estate Expert You Can Trust**

TomSmithLandandHomes.com

Information is believed to be accurate but not guaranteed.







**CLAY SIMMONS**

REALTOR®

Office: 601.898.2772

Cell: 601.672.6864

Clay@TomSmithHomes.com



**A Real Estate Expert You Can Trust**

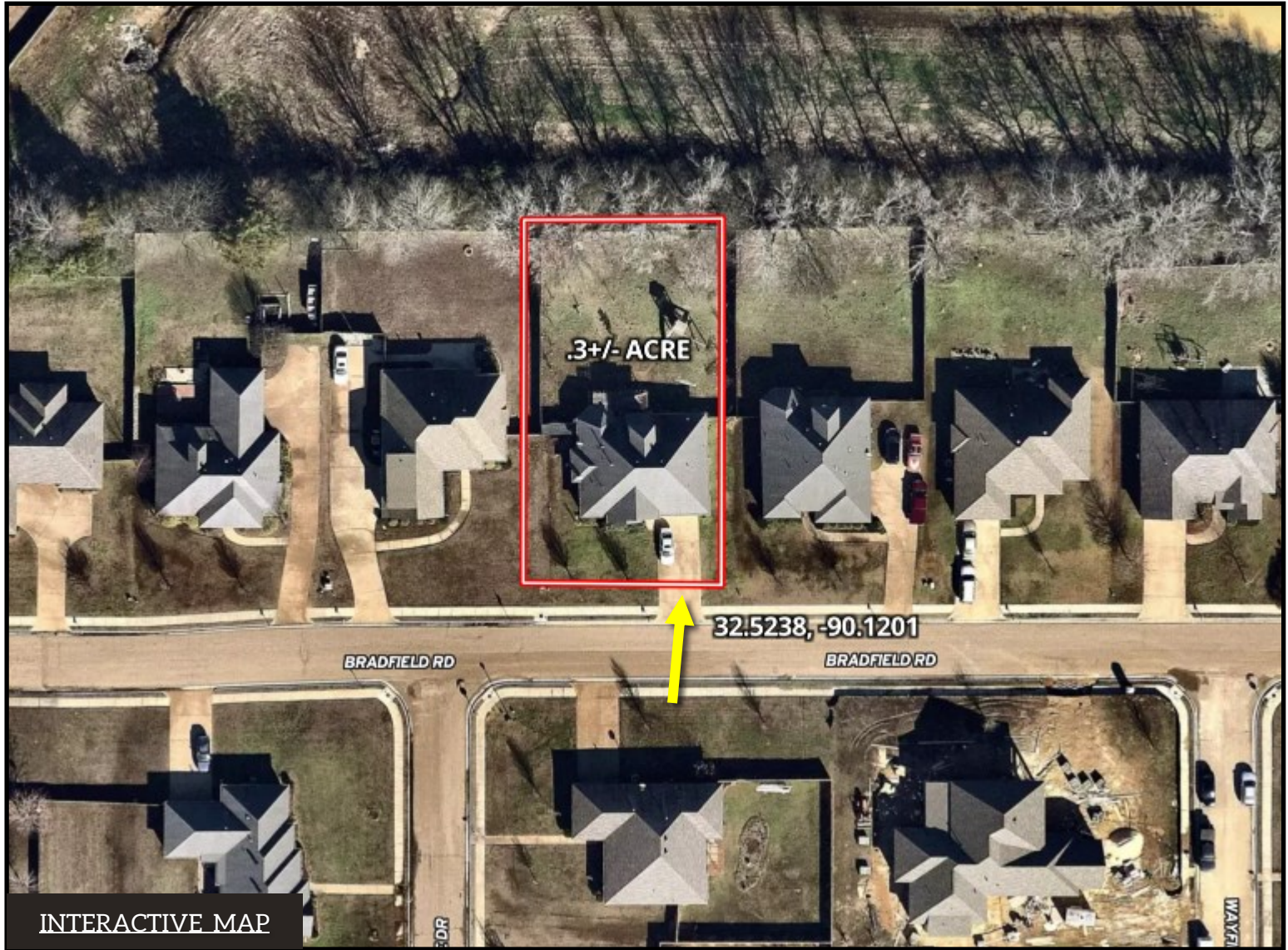
TomSmithLandandHomes.com

Information is believed to be accurate but not guaranteed.





# Aerial Map



**CLAY SIMMONS**  
REALTOR®

Office: 601.898.2772

Cell: 601.672.6864

Clay@TomSmithHomes.com



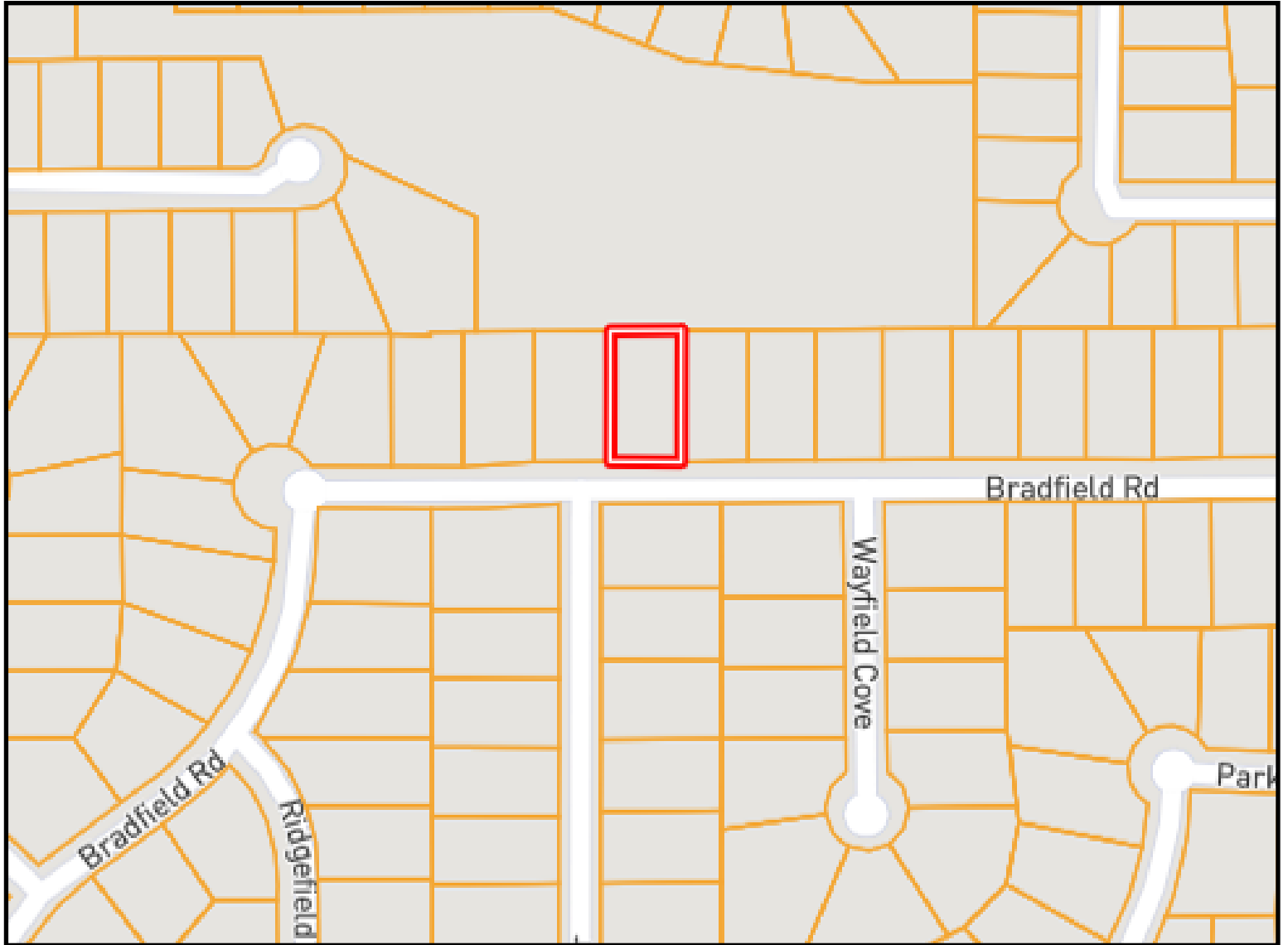
**A Real Estate Expert You Can Trust**

TomSmithLandandHomes.com

Information is believed to be accurate but not guaranteed.



# Ownership Map



**CLAY SIMMONS**  
REALTOR®

Office: 601.898.2772

Cell: 601.672.6864

Clay@TomSmithHomes.com



**A Real Estate Expert You Can Trust**

TomSmithLandandHomes.com

Information is believed to be accurate but not guaranteed.





# Directional Map



**145 Bradfield Road, Madison, MS 39110**

Directions from Madison, MS: I55 N. to Gluckstadt exit. Left at end of exit ramp. Take Gluckstadt Rd to Ridgfield S/D on the right. Turn right into the subdivision. Turn left on Bradfield Rd and follow it to 145 Bradfield. The house will be on the left. [GOOGLE MAP LINK](#)



**CLAY  
SIMMONS**  
REALTOR®

Office: 601.898.2772  
Cell: 601.672.6864  
[Clay@TomSmithHomes.com](mailto:Clay@TomSmithHomes.com)



**A Real Estate Expert You Can Trust**

[TomSmithLandandHomes.com](http://TomSmithLandandHomes.com)

Information is believed to be accurate but not guaranteed.

