

Home on 6± Acres Oktibbeha County, MS



\$320,000

Are you looking to move closer to campus but still want privacy? Or are you looking for an income-producing investment that rents for \$2800 monthly? Well, this four-bedroom, three-bath house is what you've been looking for. The bottom level is split into two separate living quarters, each with a kitchen and living area. They each have a full private bath and bedroom. The upper half of the house has two bedrooms and a full bath. It also has a full kitchen, living room, laundry room, and an elevated porch looking out over the land. The home was completely renovated last year and has all new paint, floors, appliances, and a new roof. Everything about this house is new! The road is a crushed asphalt driveway with a parking area as well. All of this is available within a few minutes of the MSU Campus. Properties like this do not come up for sale often! To schedule a private showing, call or text Walker!

Directions from Mississippi State University Campus in Starkville MS: Turn left onto Stone Blvd, then turn left onto Blackjack Road and travel .9 miles. At the roundabout take the first exit for Oktoc Road and travel 1.9 miles. Turn left onto Artesia Road. After .2 miles, the property will be on your right.



**WALKER
TRANUM**
REALTOR®

Office: 662.268.6333
Cell: 662.769.1442

Walker@TomSmithHomes.com



A Real Estate Expert You Can Trust

TomSmithLandandHomes.com

Information is believed to be accurate but not guaranteed.

Entrepreneur
2011-2023
BEST
BROKERAGES



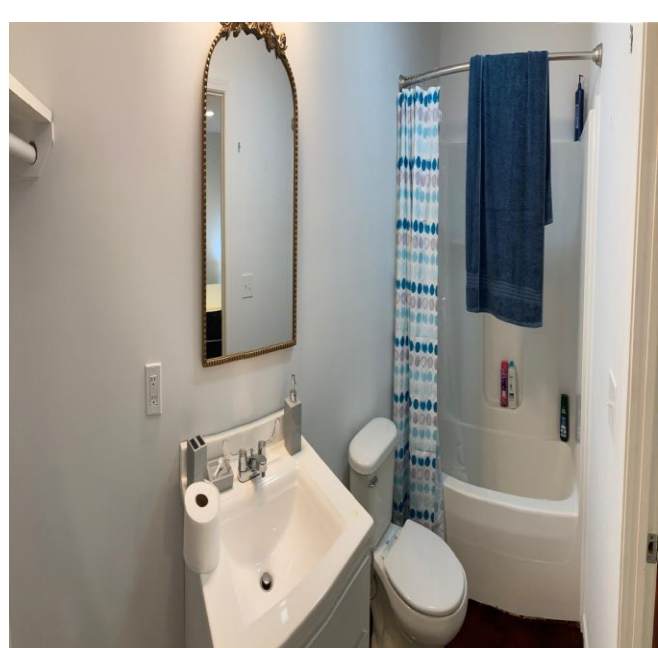
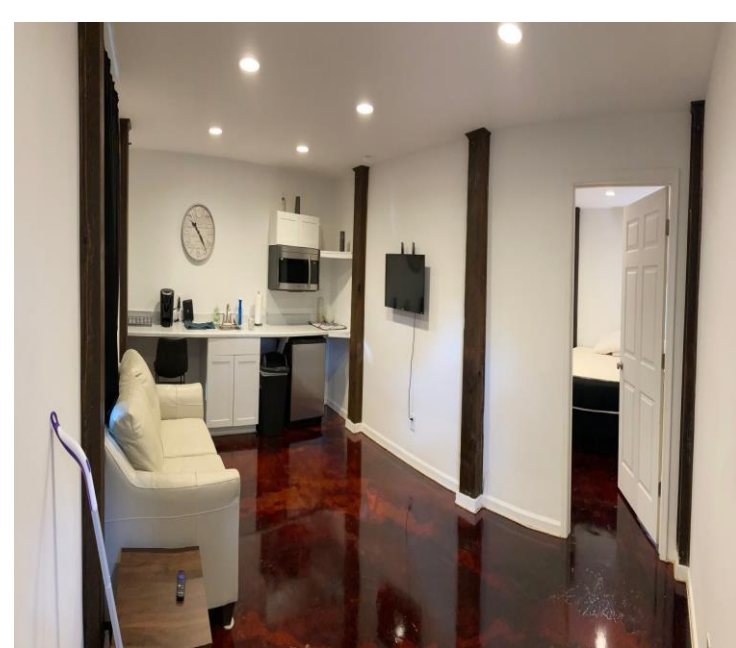
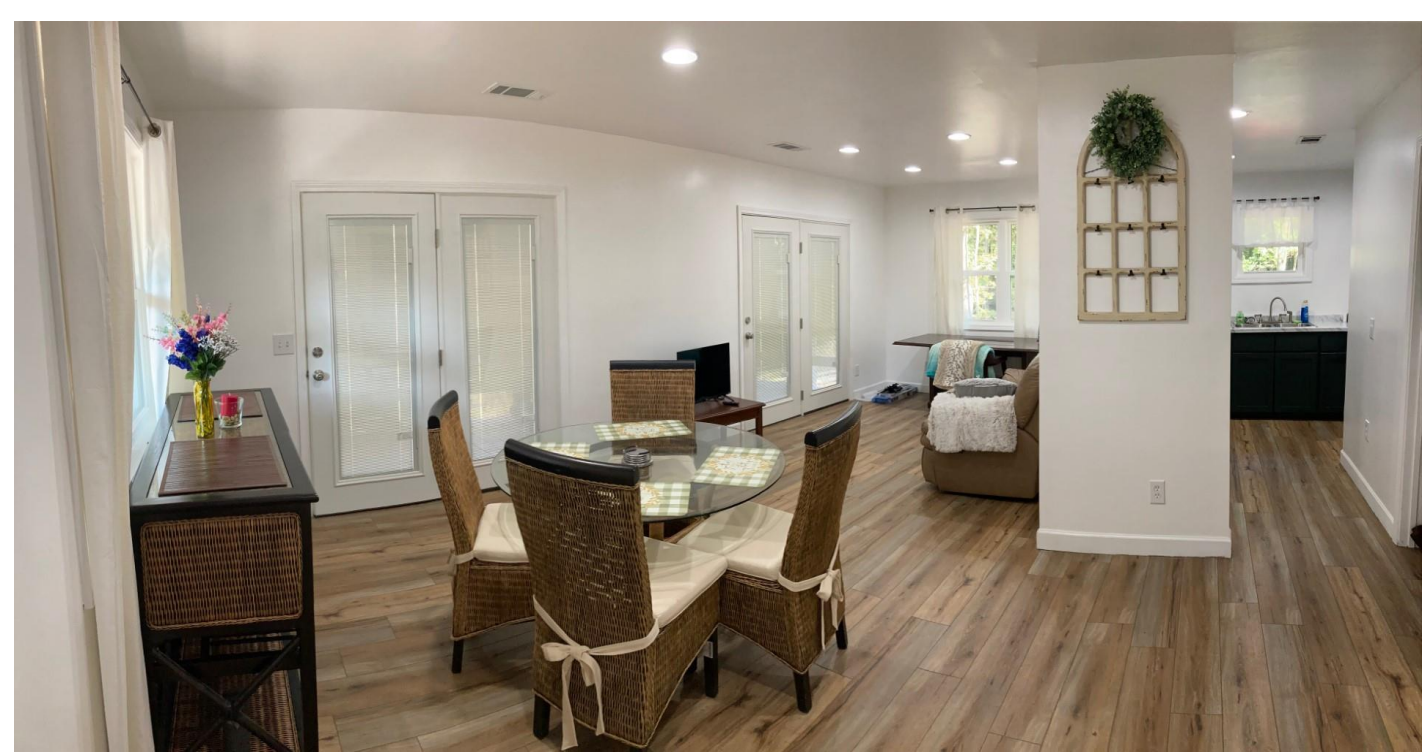
**WALKER
TRANUM**
REALTOR®
Office: 662.268.6333
Cell: 662.769.1442
Walker@TomSmithHomes.com



A Real Estate Expert You Can Trust
TomSmithLandandHomes.com

Information is believed to be accurate but not guaranteed.





**WALKER
TRANUM**
REALTOR®

Office: 662.268.6333

Cell: 662.769.1442

Walker@TomSmithHomes.com



A Real Estate Expert You Can Trust

TomSmithLandandHomes.com

Information is believed to be accurate but not guaranteed.

Entrepreneur
2011-2023
BEST
BROKERAGES



**WALKER
TRANUM**
REALTOR®

Office: 662.268.6333
Cell: 662.769.1442

Walker@TomSmithHomes.com



A Real Estate Expert You Can Trust

TomSmithLandandHomes.com

Information is believed to be accurate but not guaranteed.



Aerial Map



[Click Here For Interactive Link](#)



**WALKER
TRANUM**
REALTOR®

Office: 662.268.6333

Cell: 662.769.1442

Walker@TomSmithHomes.com



A Real Estate Expert You Can Trust

TomSmithLandandHomes.com

Information is believed to be accurate but not guaranteed.

2011-2023
BEST
BROKERAGES

Contour Map



**WALKER
TRANUM**
REALTOR®

Office: 662.268.6333
Cell: 662.769.1442

Walker@TomSmithHomes.com



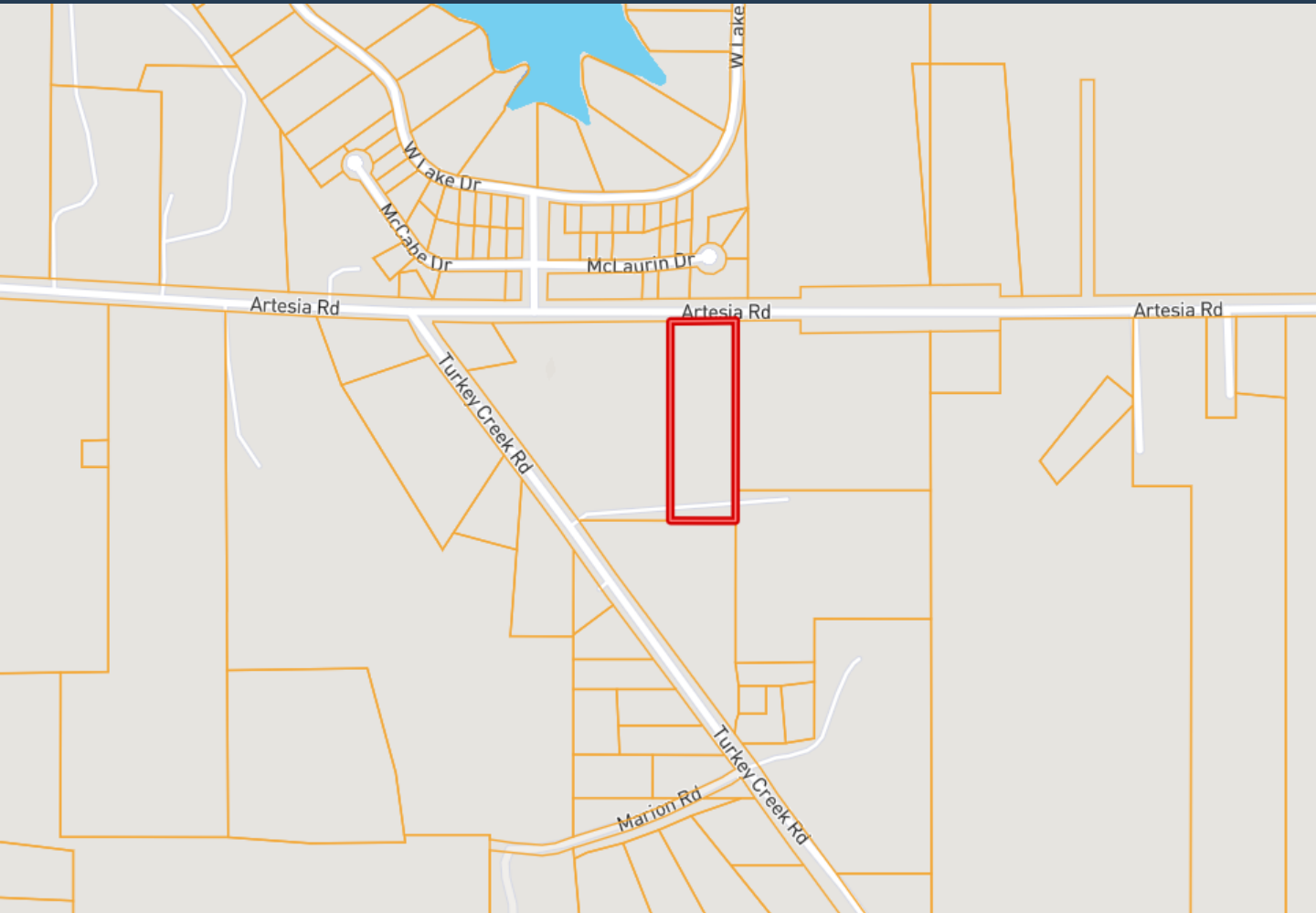
A Real Estate Expert You Can Trust

TomSmithLandandHomes.com

Information is believed to be accurate but not guaranteed.



Ownership Map



**WALKER
TRANUM**
REALTOR®

Office: 662.268.6333
Cell: 662.769.1442

Walker@TomSmithHomes.com



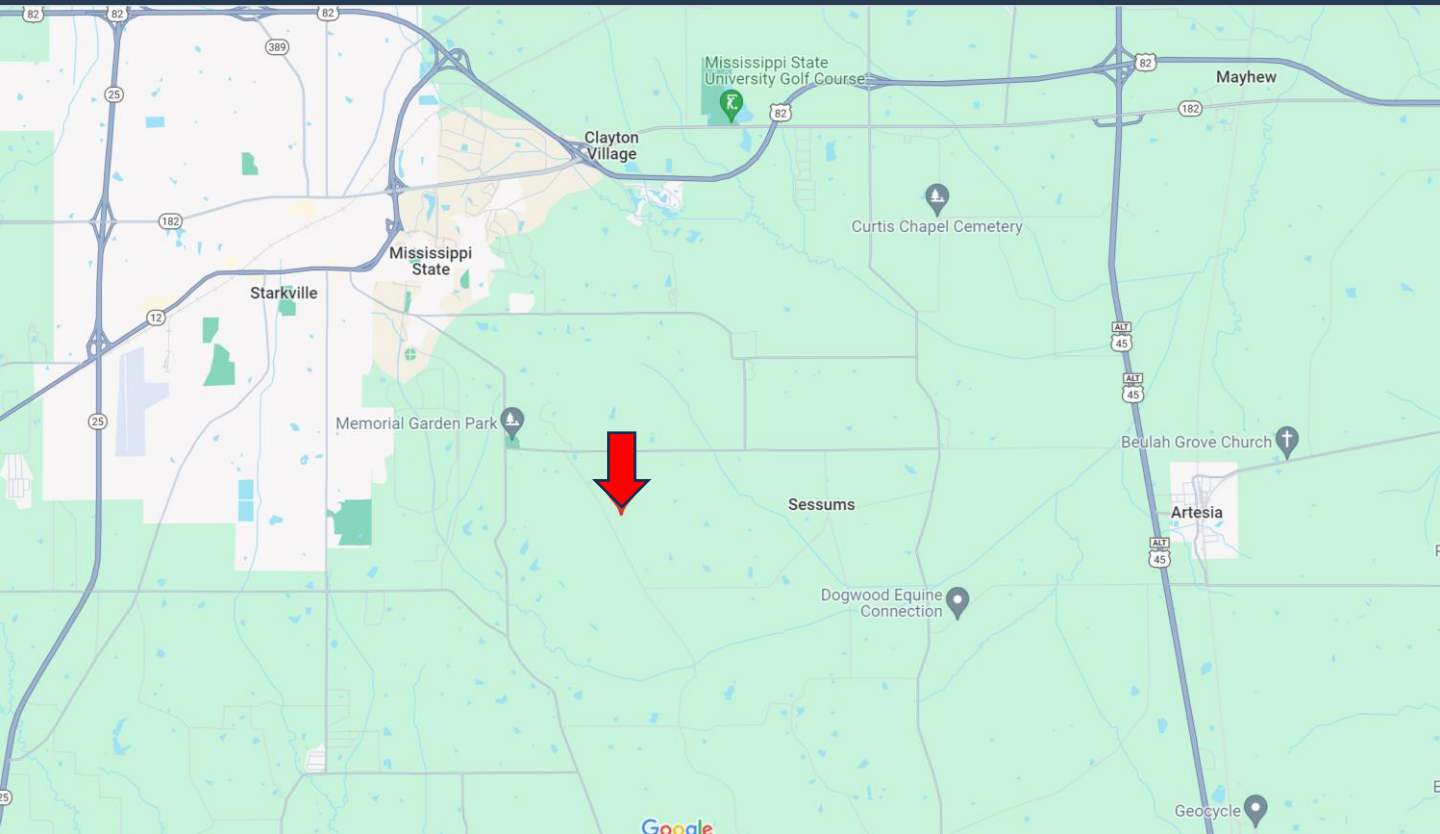
A Real Estate Expert You Can Trust

TomSmithLandandHomes.com

Information is believed to be accurate but not guaranteed.



Directional Map



Directions from Mississippi State University Campus in Starkville MS: Turn left onto Stone Blvd, then turn left onto Blackjack Road and travel .9 miles. At the roundabout take the first exit for Oktoc Road and travel 1.9 miles. Turn left onto Artesia Road. After .2 miles, the property will be on your right.

[Directional Map Link](#)



**WALKER
TRANUM**
REALTOR®

Office: 662.268.6333
Cell: 662.769.1442

Walker@TomSmithHomes.com



A Real Estate Expert You Can Trust

TomSmithLandandHomes.com

Information is believed to be accurate but not guaranteed.

