



Madison County Commercial Lot

1.46± ACRES IN MADISON, MS



This commercial property is strategically located within the emerging Gluckstadt area, offering significant potential. Zoned as C-2 Commercial and the lot size being 1.46 acres, it presents an outstanding opportunity for businesses looking to establish themselves or relocate. Situated just a brief drive north of Madison, it benefits from the substantial traffic flow along Weisenberger and Yandell Road, making it an ideal choice for those seeking a great location to launch a new business or expand an existing one. This property features a building with essential amenities such as a sink and toilet. It is equipped with power, plumbing, and a concrete slab with a lean-to-shed. With readily available energy and water connections, this property offers convenience and functionality for various business ventures. Call Colby to schedule your viewing today!



COLBY
WATSON
REALTOR®

Office: 601.898.2772

Cell: 601.668.8096

Colby@TomSmithLand.com

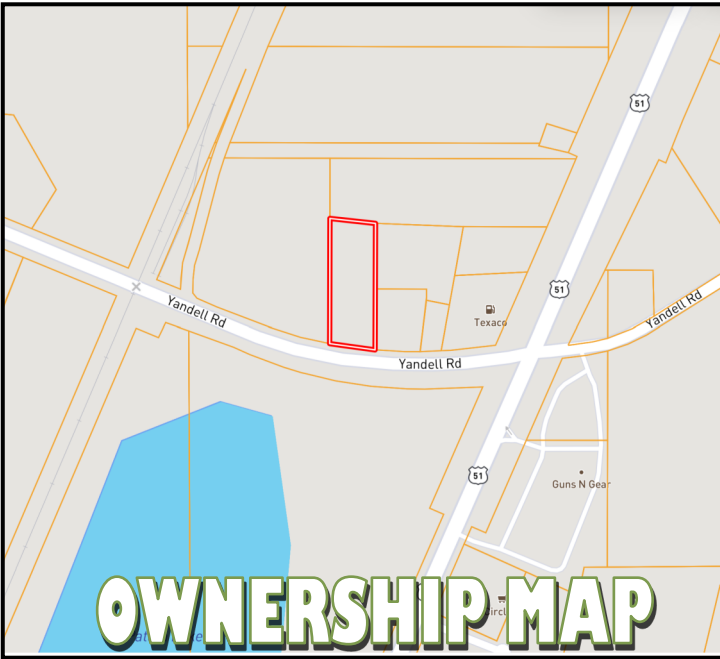


A Real Estate Expert You Can Trust

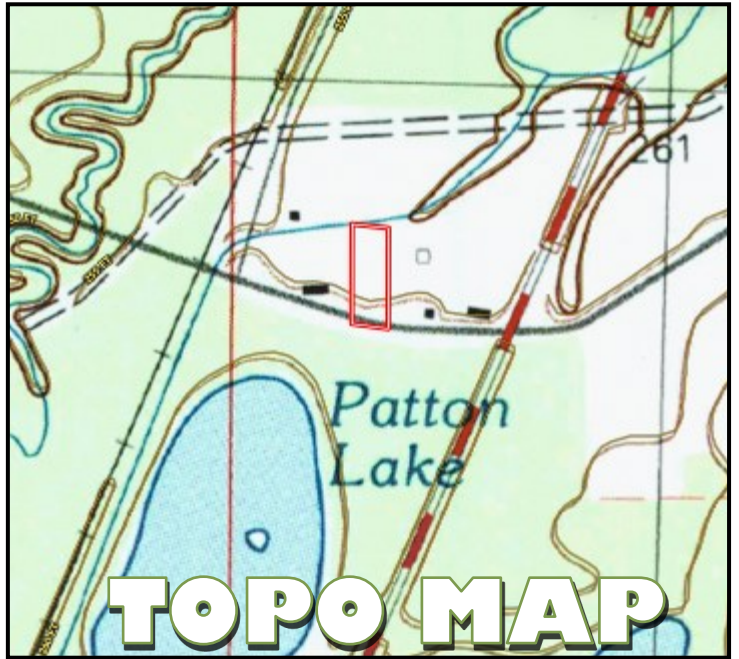
TomSmithLandandHomes.com

Information is believed to be accurate but not guaranteed.

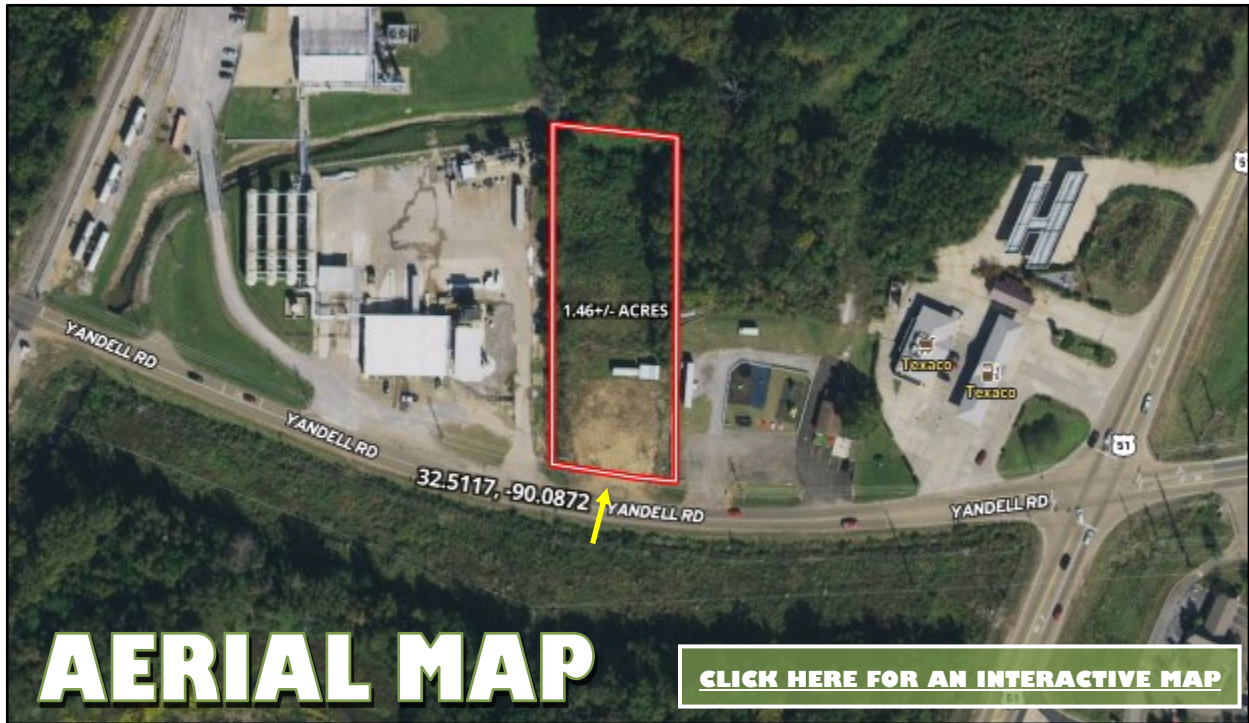




OWNERSHIP MAP



TOPO MAP



AERIAL MAP

[CLICK HERE FOR AN INTERACTIVE MAP](#)

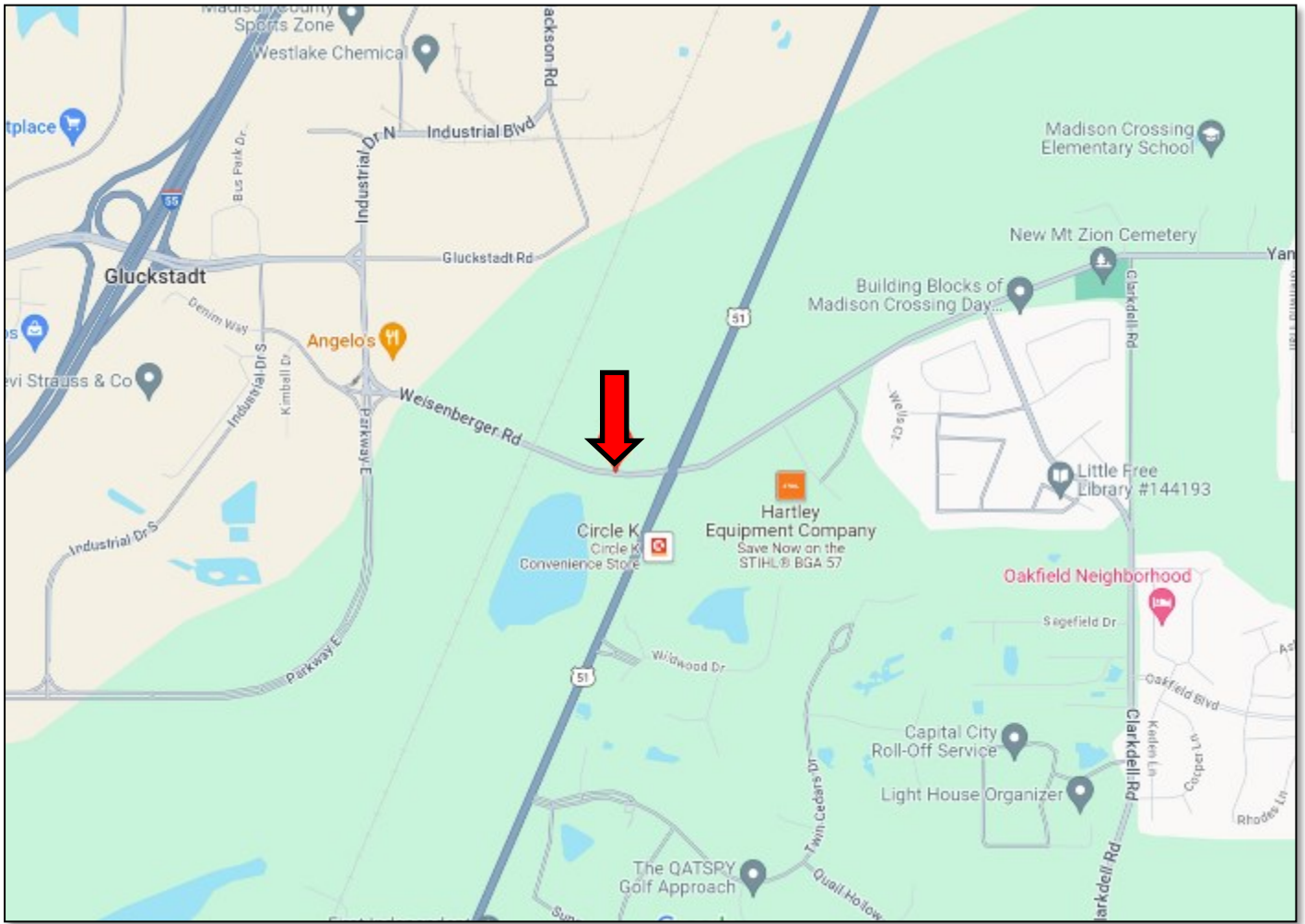
COLBY WATSON
 REALTOR®
 Office: 601.898.2772
 Cell: 601.688.8096
 Colby@TomSmithLand.com



A Real Estate Expert You Can Trust
 TomSmithLandandHomes.com

Information is believed to be accurate but not guaranteed.





DIRECTIONAL MAP

Directions from I-55 and Gluckstadt Road in Gluckstadt, MS: Take exit 112 towards Gluckstadt. Travel Gluckstadt Road for .3 miles. Turn right onto Weisenberger Road and travel .6 miles. Turn left to continue on Weisenberger Road. After 338 feet, the property will be on the left. [Google Map Link](#)
208 Weisenberger Road Madison, MS 39110



**COLBY
WATSON**
REALTOR®

Office: 601.898.2772
Cell: 601.668.8096
Colby@TomSmithLand.com



A Real Estate Expert You Can Trust

TomSmithLandandHomes.com

Information is believed to be accurate but not guaranteed.

