

Investment Property in Leflore County

613 Bell Avenue Greenwood, MS 38930



\$109,000

Discover an incredible investment opportunity in the heart of Greenwood, Mississippi, in Leflore County. This charming 1,380 sqft residence offers two spacious bedrooms and one bathroom. Located in a peaceful neighborhood, this property is the perfect canvas for an investor seeking a promising project or an aspiring homeowner passionate about revitalization. Don't miss out on this exceptional prospect – call Sarah Reese today to schedule your showing.

Directions from Hwy 82 and Hwy 49 in Greenwood, MS: Travel Northeast on Hwy 49 for 1 mile. Turn right onto Pearl Street and in 354 ft turn left at the first cross street onto Walthall St. Travel 0.7 miles, then turn right onto Bell Ave. After 0.3 miles, the house will be on the right. [Click for Google Maps.](#)



Call me today!

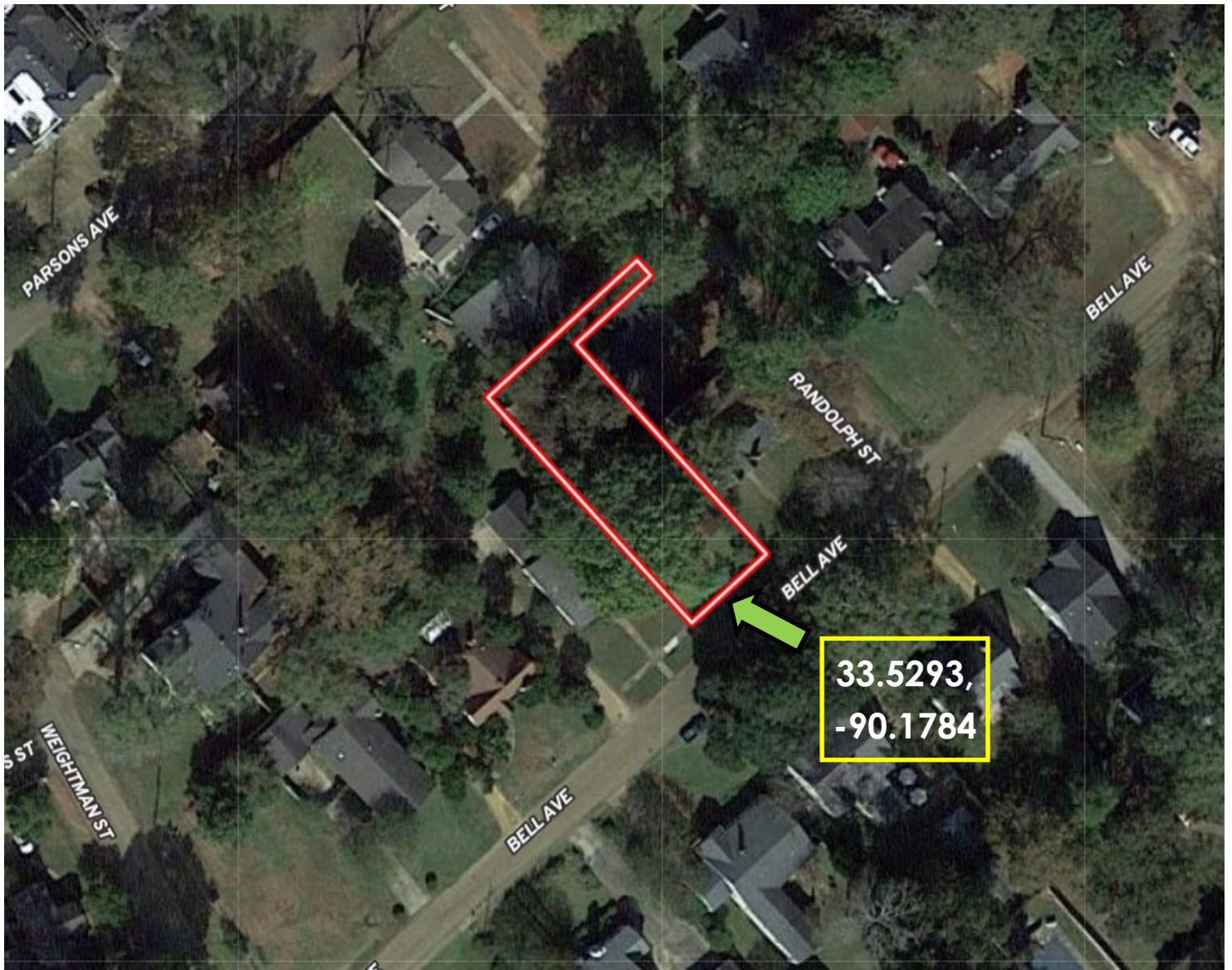
SARAH-REESE WRIGHT, REALTOR®
SarahReese@TomSmithLand.com
662.441.2500 office | 662.641.6696 cell



TomSmithLandandHomes.com

Information is believed to be accurate but not guaranteed.

AERIAL MAP



[Click for Interactive Map](#)

Call me today!

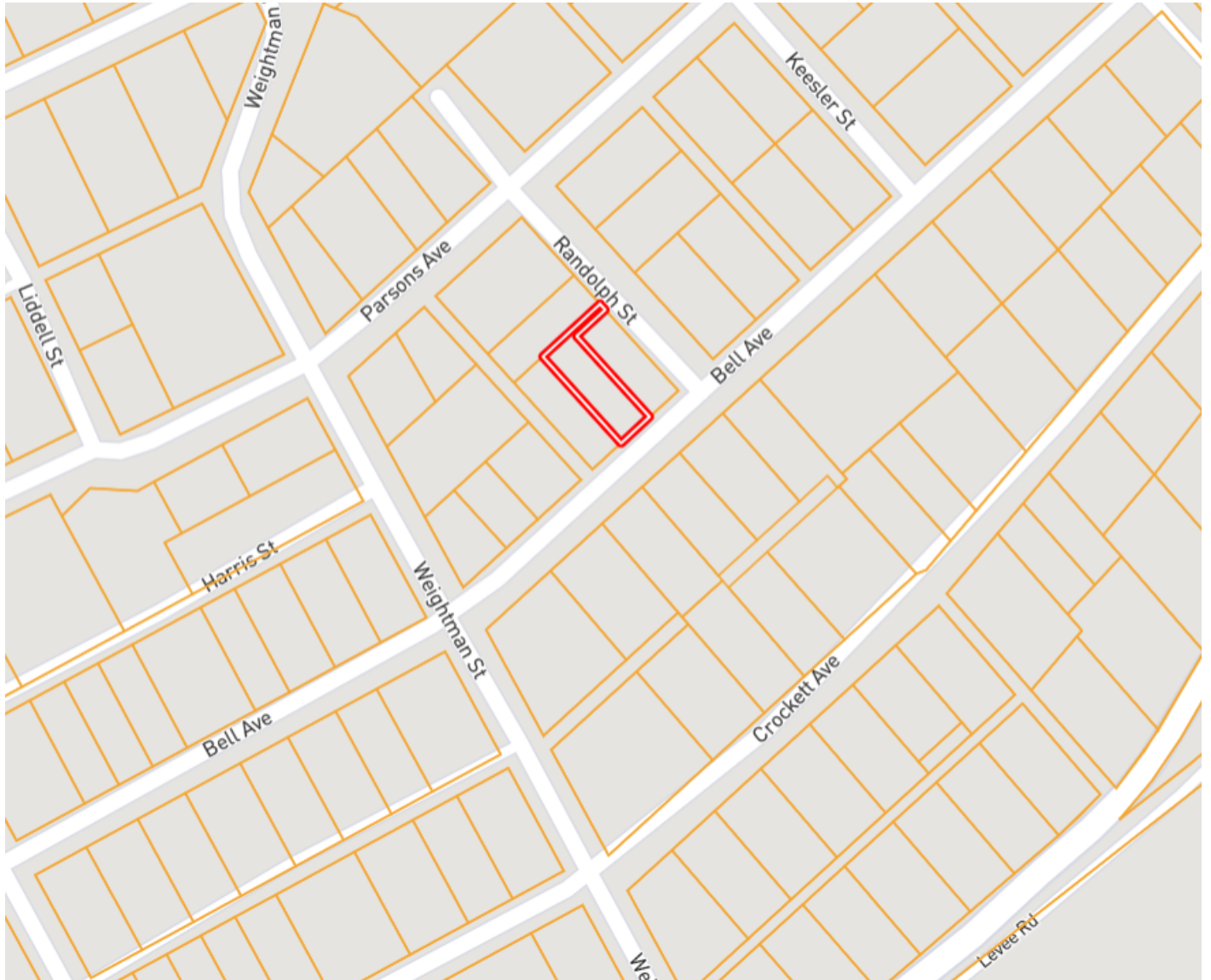
SARAH-REESE WRIGHT, REALTOR®
SarahReese@TomSmithLand.com
662.441.2500 office | 662.641.6696 cell



TomSmithLandandHomes.com

Information is believed to be accurate but not guaranteed.

OWNERSHIP MAP



Call me today!

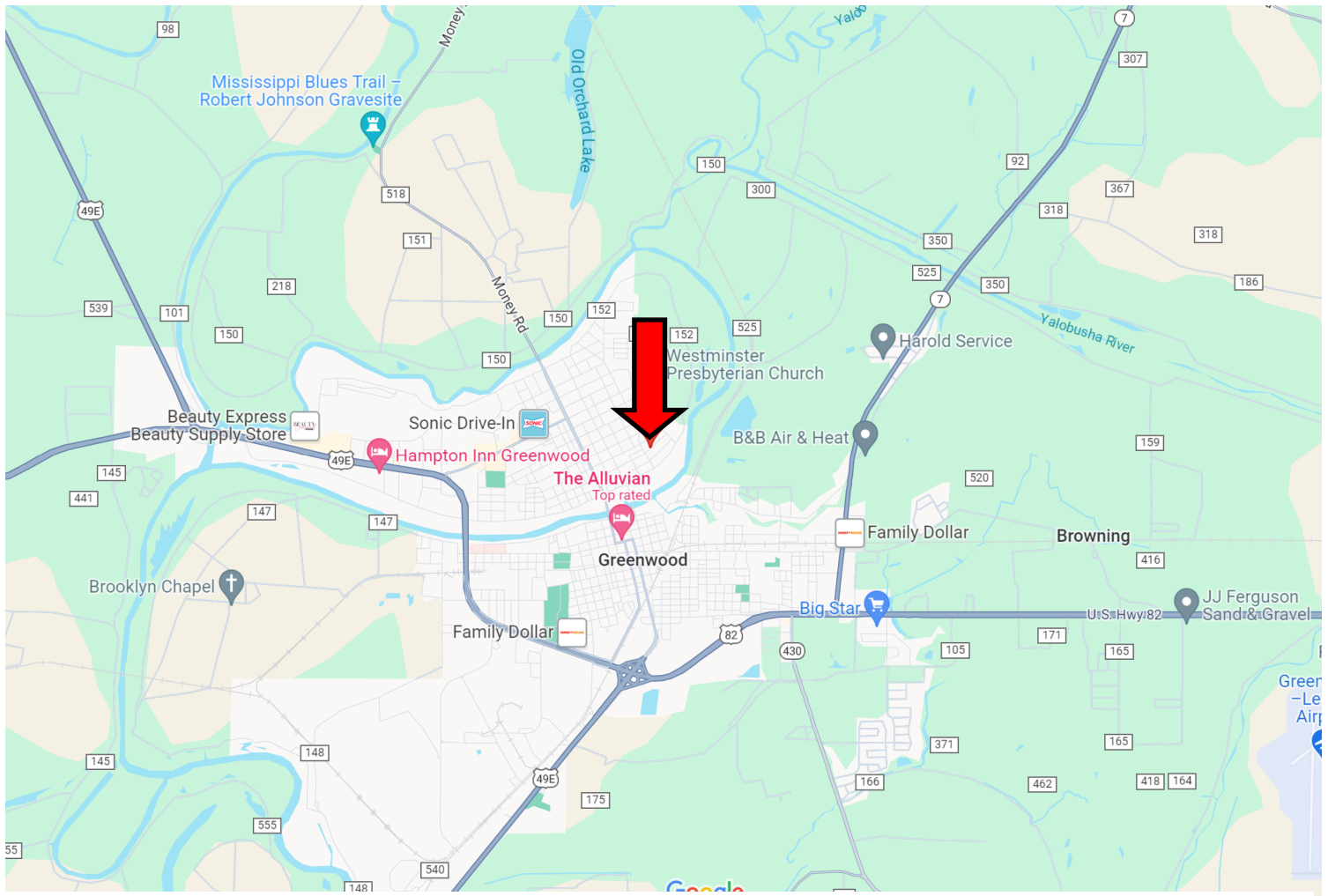
SARAH-REESE WRIGHT, REALTOR®
SarahReese@TomSmithLand.com
662.441.2500 office | 662.641.6696 cell



TomSmithLandandHomes.com

Information is believed to be accurate but not guaranteed.

DIRECTIONAL MAP



Address: 613 Bell Ave. Greenwood, MS 38930

Directions from Hwy 82 and Hwy 49 in Greenwood, MS: Travel Northeast on Hwy 49 for 1 mile. Turn right onto Pearl Street and in 354 ft turn left at the first cross street onto Walthall St. Travel 0.7 miles, then turn right onto Bell Ave. After 0.3 miles, the house will be on the right. [Click for Google Maps.](#)



Call me today!

SARAH-REESE WRIGHT, REALTOR®
SarahReese@TomSmithLand.com
662.441.2500 office | 662.641.6696 cell



TomSmithLandandHomes.com

Information is believed to be accurate but not guaranteed.