

17+/- Acres in Leake County, MS

Excellent location for Country Home or Mini-Farm



\$79,900



Welcome to this incredible 17± acre property in Leake County, Mississippi. With plenty of fenced road frontage, scattered large hardwood trees, a pond, and excellent pasture, this land offers a perfect opportunity for someone looking to build their dream home or small farm. Backed by the Natchez Trace, the property provides the convenience of being close to Jackson and Madison but offers the desired seclusion of country life. This tract is ready to build on, with water and power already available on site, an old house slab, and even a small shed stand on the property. Take advantage of this incredible property. It is sure to go quickly! Call Mike Odom today to schedule a showing!

Directions from the intersection of Hwy 43 and Hwy 429 Thomastown, MS: Travel Hwy 43 1.6 miles. The property will be on your right. [GOOGLE MAP LINK](#)



MIKE ODOM
REALTOR®

Office: 601.898.2772

Cell: 601.927.5018

MikeOdom@TomSmithLand.com



A Real Estate Expert You Can Trust

TomSmithLandandHomes.com

Information is believed to be accurate but not guaranteed.





MIKE ODOM
REALTOR®

Office: 601.898.2772

Cell: 601.927.5018

MikeOdom@TomSmithLand.com

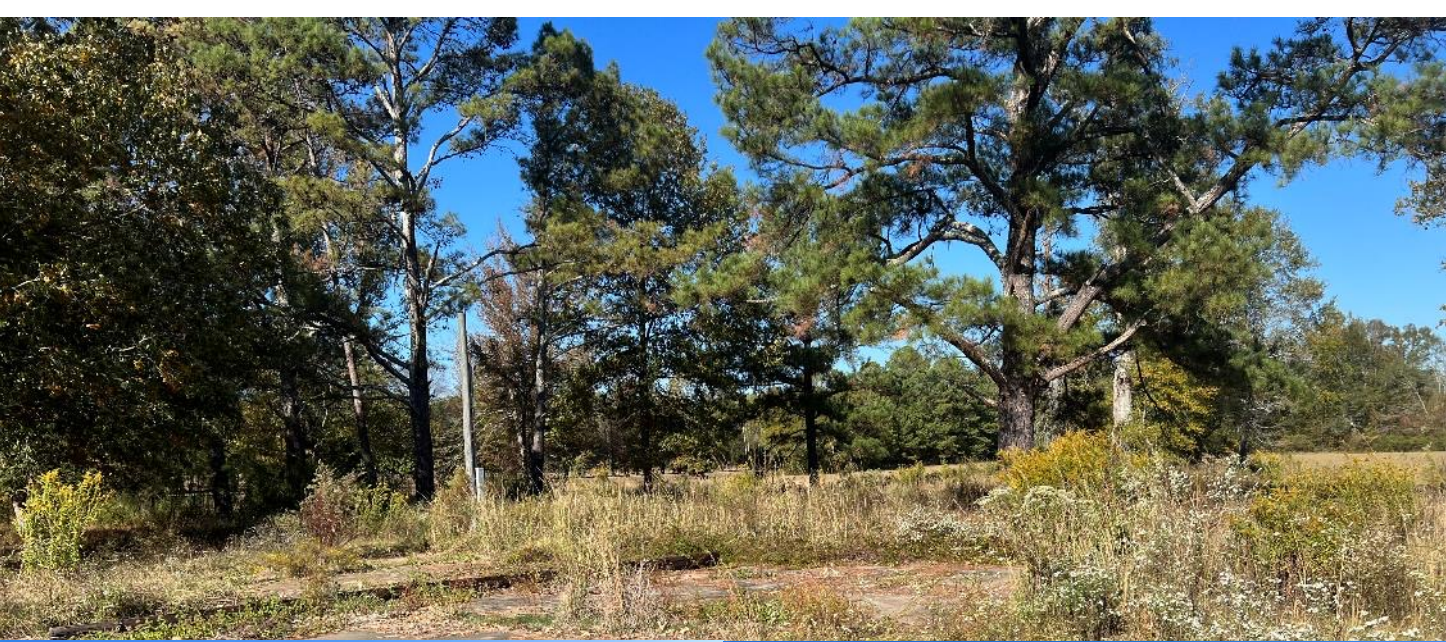


A Real Estate Expert You Can Trust

TomSmithLandandHomes.com

Information is believed to be accurate but not guaranteed.





MIKE ODOM
REALTOR®

Office: 601.898.2772

Cell: 601.927.5018

MikeOdom@TomSmithLand.com



A Real Estate Expert You Can Trust

TomSmithLandandHomes.com

Information is believed to be accurate but not guaranteed.



Aerial Map



[Click Here for an Interactive Map](#)

MIKE ODOM
REALTOR®

Office: 601.898.2772

Cell: 601.927.5018

MikeOdom@TomSmithLand.com



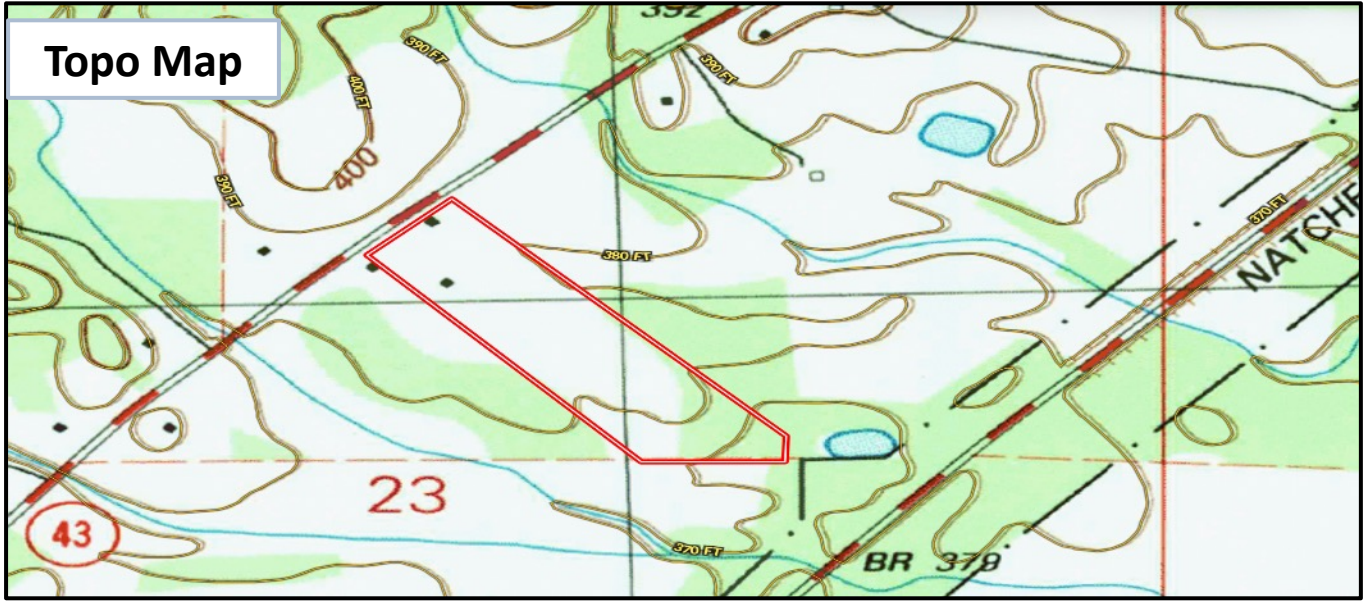
A Real Estate Expert You Can Trust

TomSmithLandandHomes.com

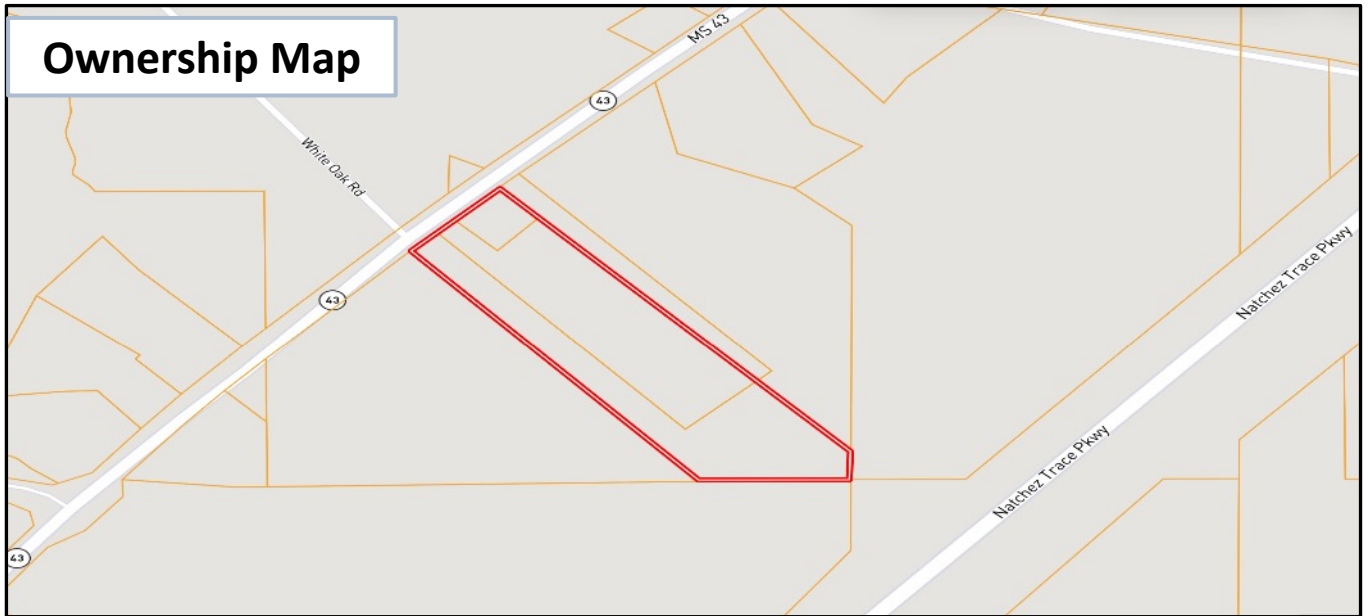
Information is believed to be accurate but not guaranteed.



Topo Map



Ownership Map



MIKE ODOM
REALTOR®

Office: 601.898.2772

Cell: 601.927.5018

MikeOdom@TomSmithLand.com



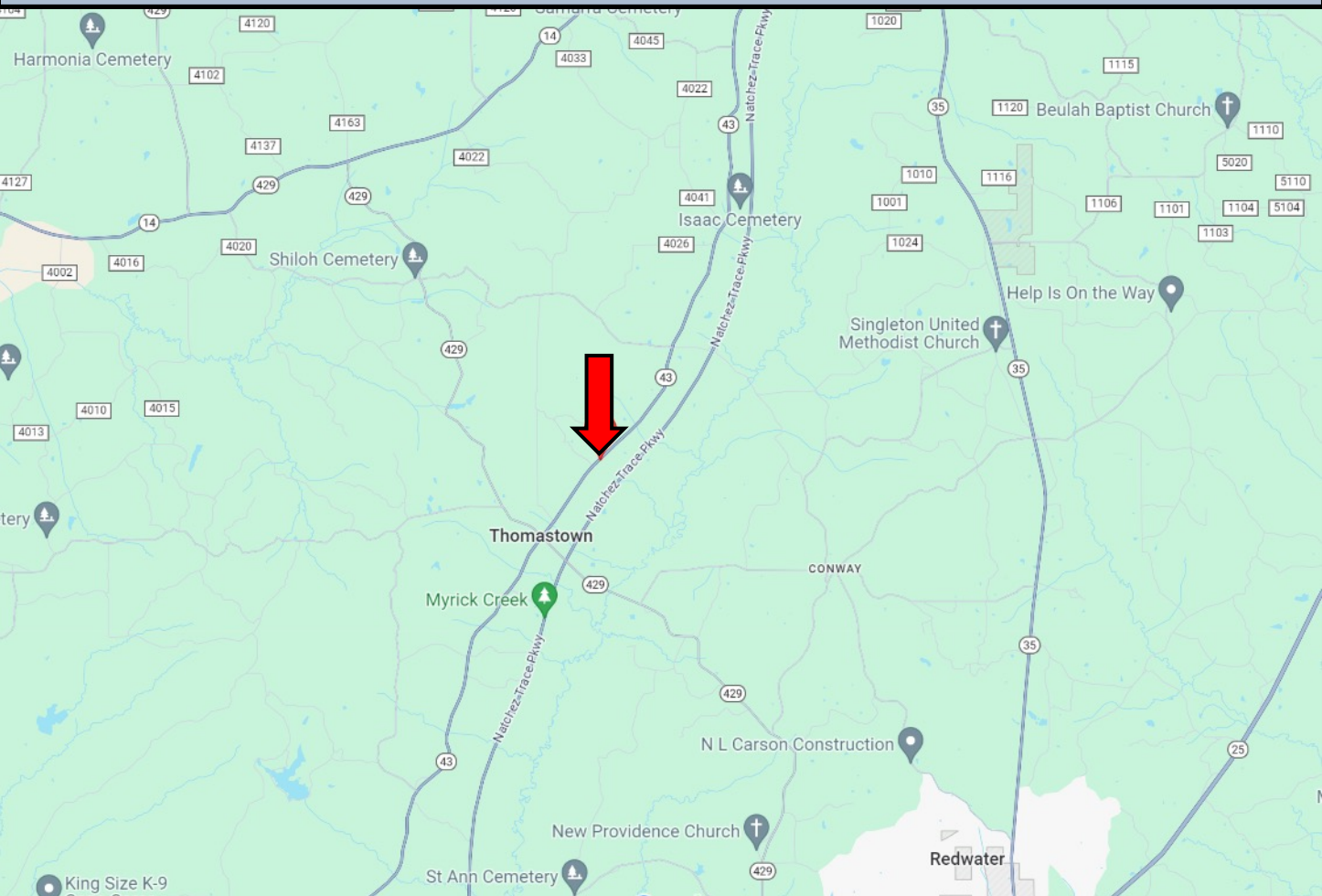
A Real Estate Expert You Can Trust

TomSmithLandandHomes.com

Information is believed to be accurate but not guaranteed.

2011-2023
BEST
BROKERAGES

Directional Map



Directions from the intersection of Hwy 43 and Hwy 429 Thomastown, MS: Travel Hwy 43 1.6 miles. The property will be on your right. [GOOGLE MAP LINK](#)



MIKE ODOM
REALTOR®

Office: 601.898.2772

Cell: 601.927.5018

MikeOdom@TomSmithLand.com



A Real Estate Expert You Can Trust

TomSmithLandandHomes.com

Information is believed to be accurate but not guaranteed.

