

# WELL-MAINTAINED RANKIN COUNTY HOME ON 3± ACRES

210 Planters Grove Brandon, MS 39047



## \$659,000

- Tranquil Country Living with City Convenience
  - 3± Acre Private Lot in Fannin Community of Rankin County
  - 3,587 Sq. Ft. Home with 3 Bedrooms, 3 Bathrooms, and a Bonus Room
  - Open Floor Plan with a Warm Atmosphere
  - Well-Appointed Kitchen with a Butler's Pantry
  - Meticulously Renovated Bathrooms
  - Spacious Carport for Storage, Office, or Workout Area
  - Beautifully Landscaped Yard with a Pool, Outdoor Fireplace, Front and Back Porches
  - Carefully Maintained, Loaded with Extras
  - Excellent Community, Top-Rated Schools, and Proximity to Amenities
- Schedule a viewing today before it's gone!



**DAVID BELDEN**  
REALTOR®

O: 601.898.2772 | C: 601.415.3883  
DBelden@TomSmithLand.com



**HALEY BELDEN**  
REALTOR®

O: 601.898.2772 | C: 601.209.2310  
Haley@TomSmithHomes.com

**TomSmithLandandHomes.com**

Information is believed to be accurate but not guaranteed.





Welcome to 210 Planters Grove, where the charm of quiet, peaceful country living meets the convenience of being just under 15 miles away from the shopping and restaurant scenes of Flowood, Madison, and Ridgeland. Located on a private 3-acre lot in the highly sought-after Fannin community, this property provides tranquility, seclusion, and access to top-rated schools.

This beautiful 3,587-square-foot home features three bedrooms, three bathrooms, and a sprawling bonus room. The primary bedroom, located downstairs, offers convenience and privacy. The open floor plan seamlessly connects the living spaces, creating a warm and inviting atmosphere throughout the home.

The heart of this residence is undoubtedly its well-appointed kitchen and adjacent keeping room, complete with a cozy gas fireplace. The chef's dream butler's pantry offers an expansive countertop and storage. Every bathroom in the house has been meticulously renovated, showcasing perfect touches and new finishes.

Additional features include a spacious carport providing extra storage space, an office, or a workout area. The beautifully landscaped yard surrounds a generous pool, inviting you to relax and unwind. Enjoy the company of loved ones by the outdoor fireplace or find comfort on the expansive front porch or back porch, both are perfect spots for enjoying this property.

This home is a rare find, carefully maintained and loaded with extras, ensuring its pristine condition. With its wonderful community, top-notch schools, peaceful ambiance, and proximity to essential amenities, 210 Planters Grove offers everything you need in an ideal location. Don't miss the opportunity to make this exceptional property your own— Call Haley or David to schedule a viewing today before it's gone.



**DAVID BELDEN**  
REALTOR®

O: 601.898.2772 | C: 601.415.3883  
DBelden@TomSmithLand.com



**HALEY BELDEN**  
REALTOR®

O: 601.898.2772 | C: 601.209.2310  
Haley@TomSmithHomes.com



**DAVID BELDEN**  
REALTOR®

O: 601.898.2772 | C: 601.425.3883  
DBelden@TomSmithLand.com



**HALEY BELDEN**  
REALTOR®

O: 601.898.2772 | C: 601.209.2310  
Haley@TomSmithHomes.com

**TomSmithLandandHomes.com**

Information is believed to be accurate but not guaranteed.





**DAVID BELDEN**  
REALTOR®

O: 601.898.2772 | C: 601.425.3883  
DBelden@TomSmithLand.com



**HALEY BELDEN**  
REALTOR®

O: 601.898.2772 | C: 601.209.2310  
Haley@TomSmithHomes.com

**TomSmithLandandHomes.com**

Information is believed to be accurate but not guaranteed.



# Aerial Map



CLICK HERE FOR AN INTERACTIVE MAP LINK

**HALEY BELDEN**, REALTOR®  
Haley@TomSmithHomes.com  
601.898.2772 **office** | 601.209.2310 **cell**



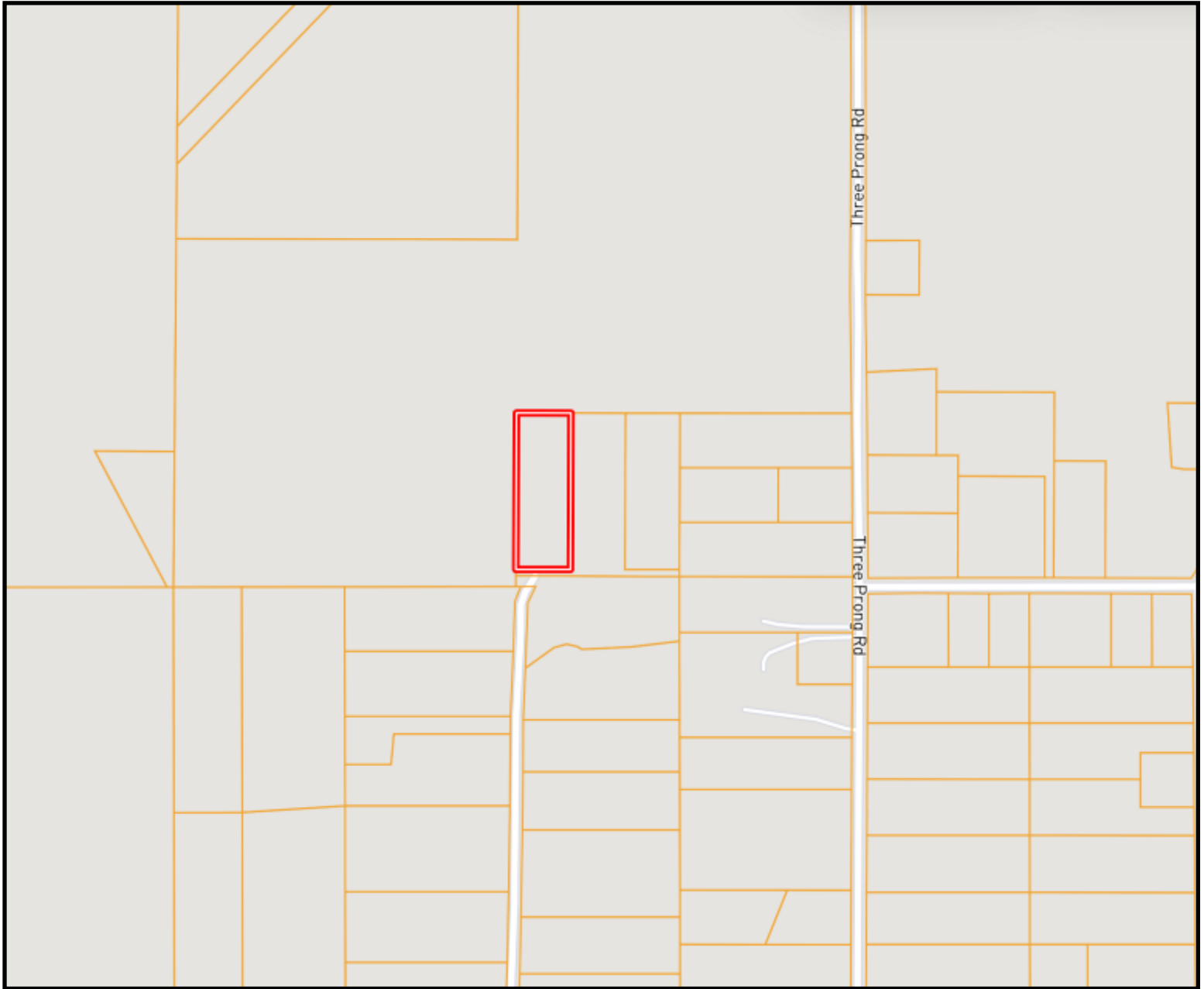
**DAVID BELDEN**, REALTOR®  
DBelden@TomSmithLand.com  
601.898.2772 **office** | 601.415.3884 **cell**

**TomSmithLandandHomes.com**

Information is believed to be accurate but not guaranteed.



# Ownership Map



**DAVID BELDEN**  
REALTOR®

O: 601.898.2772 | C: 601.425.3883  
DBelden@TomSmithLand.com



**HALEY BELDEN**  
REALTOR®

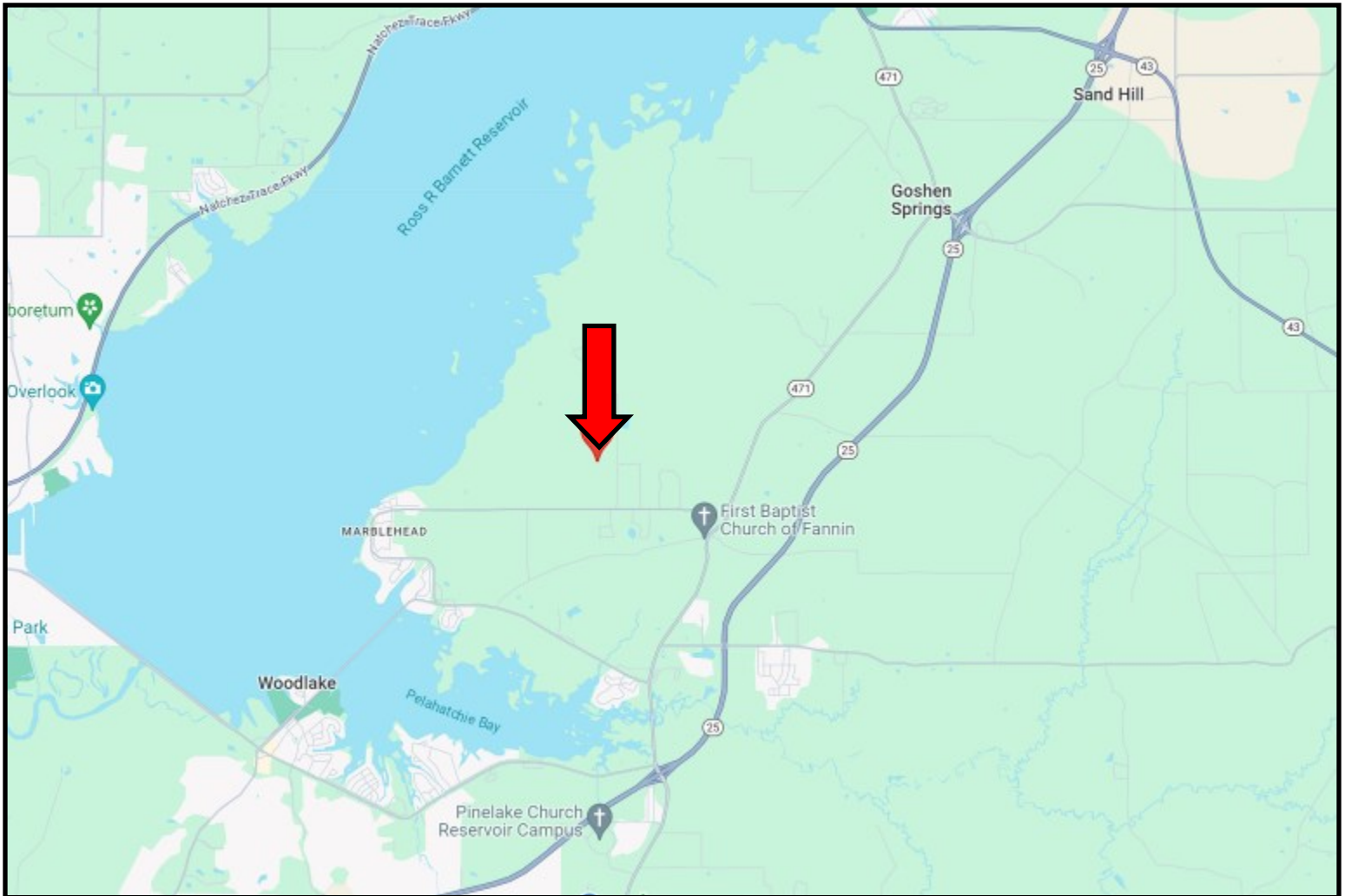
O: 601.898.2772 | C: 601.209.2310  
Haley@TomSmithHomes.com

**TomSmithLandandHomes.com**

Information is believed to be accurate but not guaranteed.



# Directional Map



**Directions from the intersection of Hwy 25 and Holly Bush Road in Brandon, MS 39047:** Travel Hwy 25 N for 1.3 miles. Turn left onto Mt. Helm Road and travel .9 miles. Continue onto Fannin Landing for 1.4 miles. Turn right onto Planter's Grove. After .6 miles, the home will be on the left. [GOOGLE MAP LINK](#)



**DAVID BELDEN**  
REALTOR®

O: 601.898.2772 | C: 601.415.3883  
DBelden@TomSmithLand.com



**HALEY BELDEN**  
REALTOR®

O: 601.898.2772 | C: 601.209.2310  
Haley@TomSmithHomes.com

**TomSmithLandandHomes.com**

Information is believed to be accurate but not guaranteed.

