

RECREATIONAL/HUNTING CAMP

91.4± Acres in Attala County, MS



\$478,000

This 91.4± acre recreational hunting tract in Attala County, MS, has a lot to offer. When you first pull into the property, you notice the privacy right away. When entering the gates, you are greeted by a 40x40-foot structure with a camper, washroom, and skinning shed. There is also a 48x18-foot barn equipped with all the hookups needed for a fifth-wheel camper. Next to this barn is an outdoor family area with a TV, fireplace, and kitchen. Attached to this is an equipment building with a bathroom and four garage bays with roll-up doors. Next to the 48x16 foot barn are two more full hookups and parking spaces for two more campers. This property also features a great interior road system, allowing excellent access. Five shooting houses look over multiple food plots, in addition to seven deer feeders and five ladder stands. There is also an additional 145± acres of lease available neighboring the property. If you are looking for a turn-key hunting property, look no further than this 91.4± acres just 15 minutes outside of Kosciusko, MS, and just under an hour from Canton and Madison, MS! To schedule a private showing, call or text Walker!



**WALKER
TRANUM**
REALTOR®

Office: 662.268.6333

Cell: 662.769.1442

Walker@TomSmithHomes.com

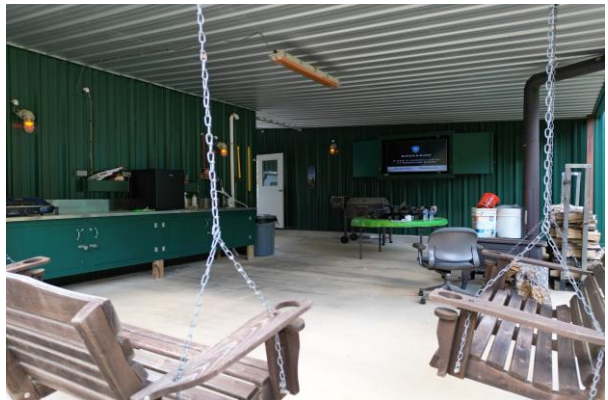


A Real Estate Expert You Can Trust

TomSmithLandandHomes.com

Information is believed to be accurate but not guaranteed.





**WALKER
TRANUM**
REALTOR®

Office: 662.268.6333

Cell: 662.769.1442

Walker@TomSmithHomes.com



A Real Estate Expert You Can Trust

TomSmithLandandHomes.com

Information is believed to be accurate but not guaranteed.





**WALKER
TRANUM**
REALTOR®

Office: 662.268.6333

Cell: 662.769.1442

Walker@TomSmithHomes.com



A Real Estate Expert You Can Trust

TomSmithLandandHomes.com

Information is believed to be accurate but not guaranteed.





**WALKER
TRANUM**
REALTOR®

Office: 662.268.6333

Cell: 662.769.1442

Walker@TomSmithHomes.com

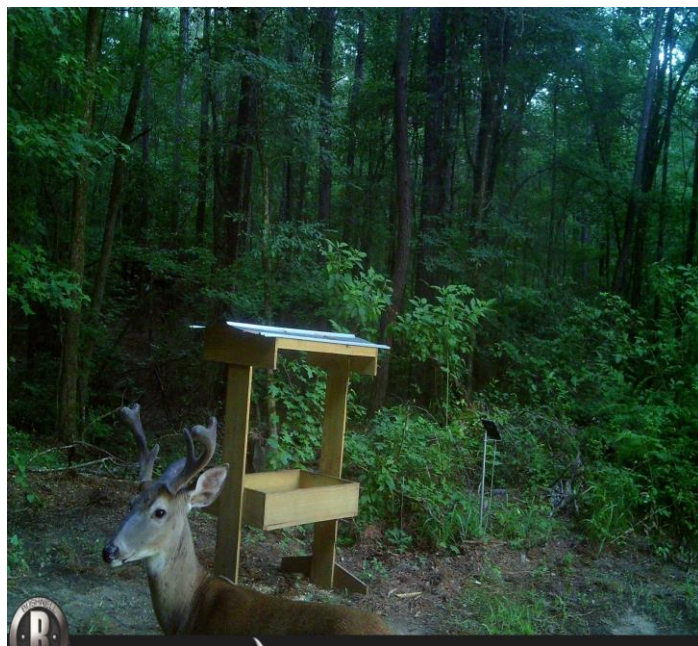


A Real Estate Expert You Can Trust

TomSmithLandandHomes.com

Information is believed to be accurate but not guaranteed.





**WALKER
TRANUM**
REALTOR®

Office: 662.268.6333

Cell: 662.769.1442

Walker@TomSmithHomes.com



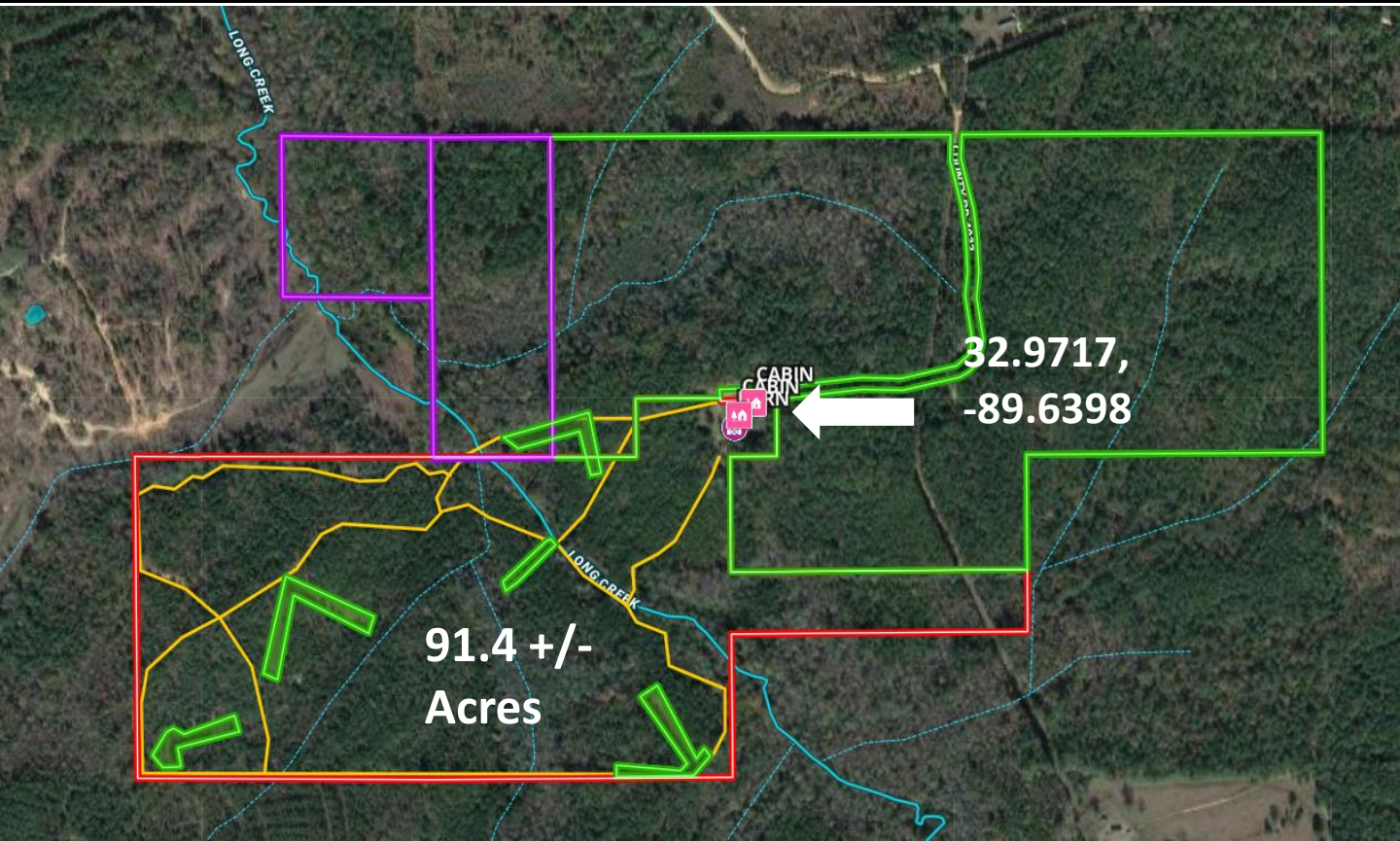
A Real Estate Expert You Can Trust

TomSmithLandandHomes.com

Information is believed to be accurate but not guaranteed.



AERIAL MAP



[Click Here for LandId Map Link](#)



**WALKER
TRANUM**
REALTOR®

Office: 662.268.6333

Cell: 662.769.1442

Walker@TomSmithHomes.com



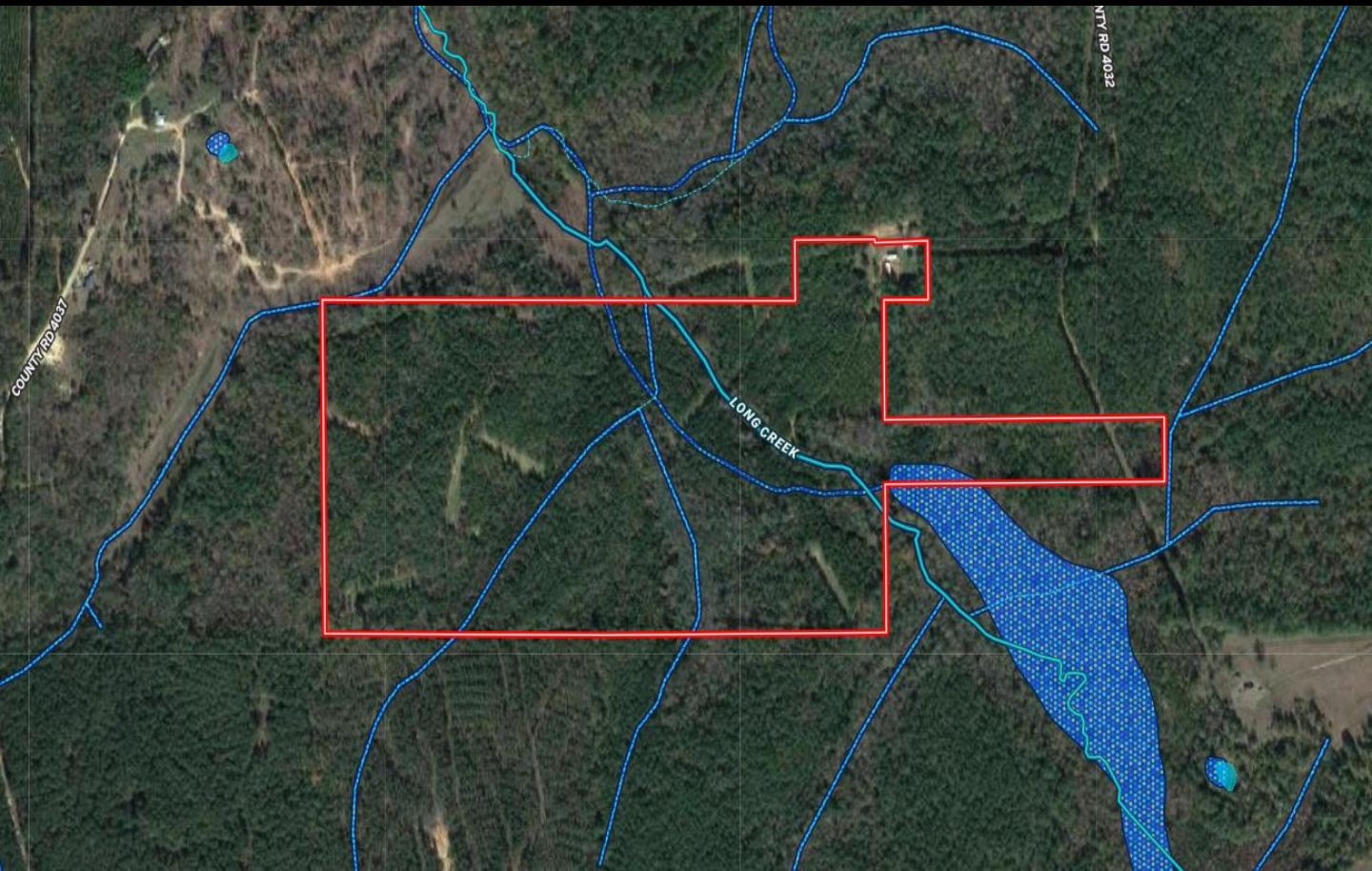
A Real Estate Expert You Can Trust

TomSmithLandandHomes.com

Information is believed to be accurate but not guaranteed.



FLOOD MAP



**WALKER
TRANUM**
REALTOR®

Office: 662.268.6333
Cell: 662.769.1442

Walker@TomSmithHomes.com



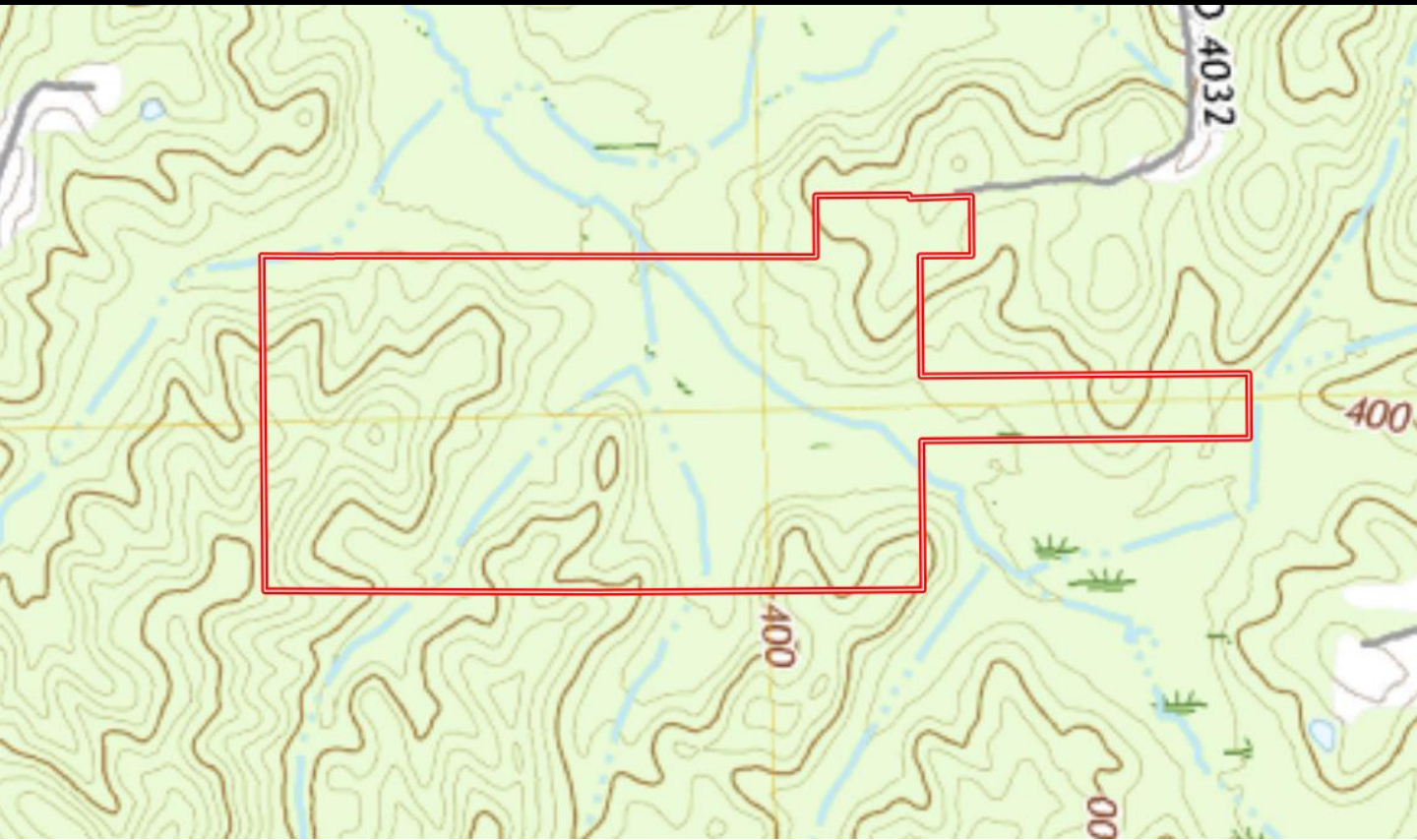
A Real Estate Expert You Can Trust

TomSmithLandandHomes.com

Information is believed to be accurate but not guaranteed.



Topography Map



**WALKER
TRANUM**
REALTOR®

Office: 662.268.6333
Cell: 662.769.1442

Walker@TomSmithHomes.com



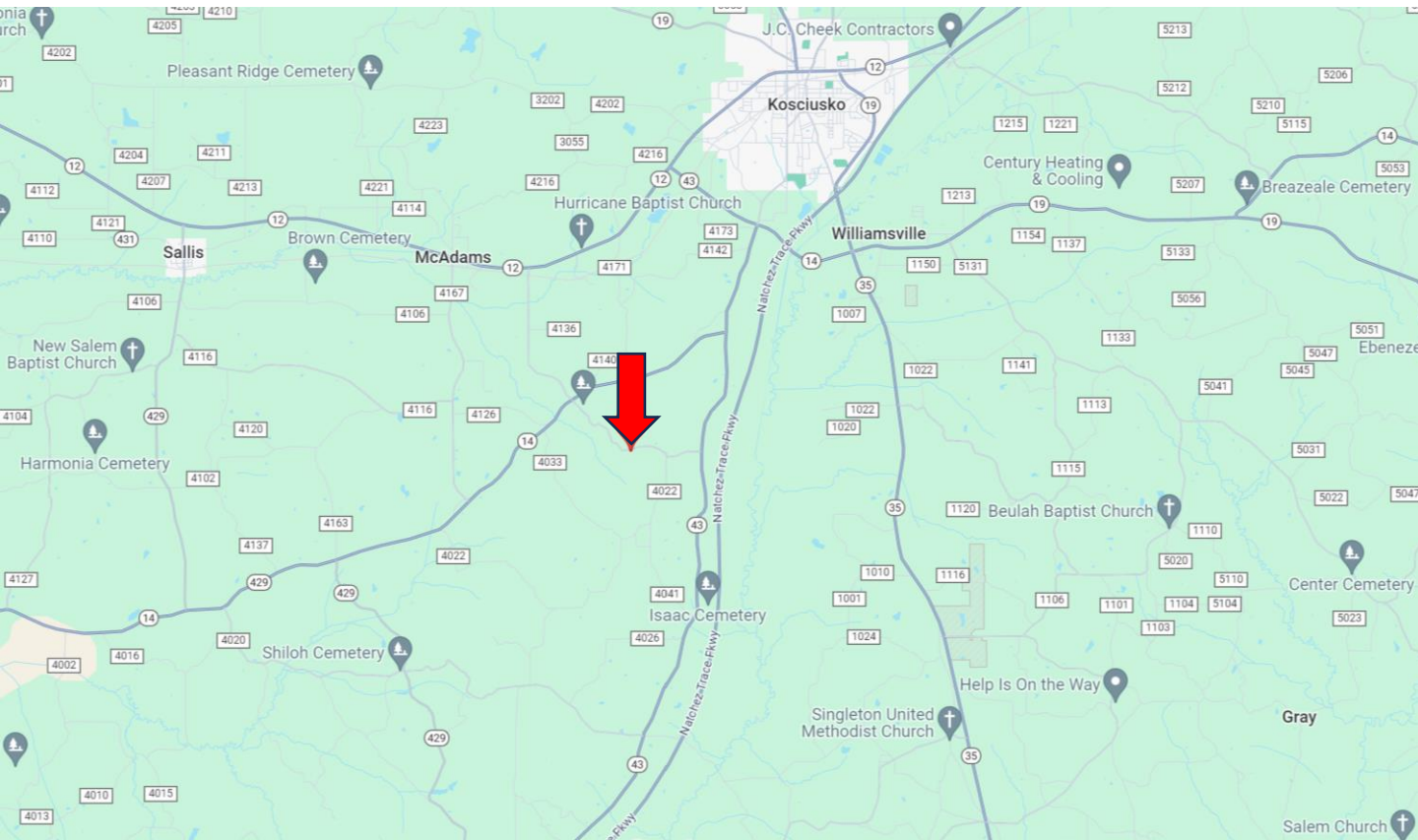
A Real Estate Expert You Can Trust

TomSmithLandandHomes.com

Information is believed to be accurate but not guaranteed.



Directional Map



Directions from Hwy 43 and Hwy 14 in Kosciusko, MS: Turn onto Hwy 14/Hwy 43S and travel 4 miles. Turn right onto County Road 4022 and travel .6 miles. Turn right onto County Road 4045 and travel .7 miles. Turn left onto County Road 4032. After .4 miles, you will dead end into the property. [GOOGLE MAP LINK](#)



**WALKER
TRANUM**
REALTOR®

Office: 662.268.6333
Cell: 662.769.1442

Walker@TomSmithHomes.com



A Real Estate Expert You Can Trust

TomSmithLandandHomes.com

Information is believed to be accurate but not guaranteed.

