

Beautiful Country Home

Bolivar County, MS



1275 McWimus Rd. Merigold, MS 38759

\$169,500

This adorable 1,500 sqft home features three bedrooms, two bathrooms, and hardwood floors that grace every room. Located on a .46± acre lot just outside of town in Bolivar County, MS, it offers a tranquil countryside setting while still being conveniently only five miles from Cleveland. Recently renovated from top to bottom, it's ideal as a starter home or an investment property, with a rental income of \$ 1,500 per month.

Directions from Hwy 8 and Hwy 61 Cleveland, MS: Travel North on Hwy 61 for approximately 4.1 miles. Turn left onto McWimus Rd. After 1 mile, the house will be on the left. [Click for Google Maps.](#)



Call me today!

SARAH-REESE WRIGHT, REALTOR®
SarahReese@TomSmithLand.com
662.441.2500 office | 662.641.6696 cell



TomSmithLandandHomes.com

Information is believed to be accurate but not guaranteed.



Call me today!

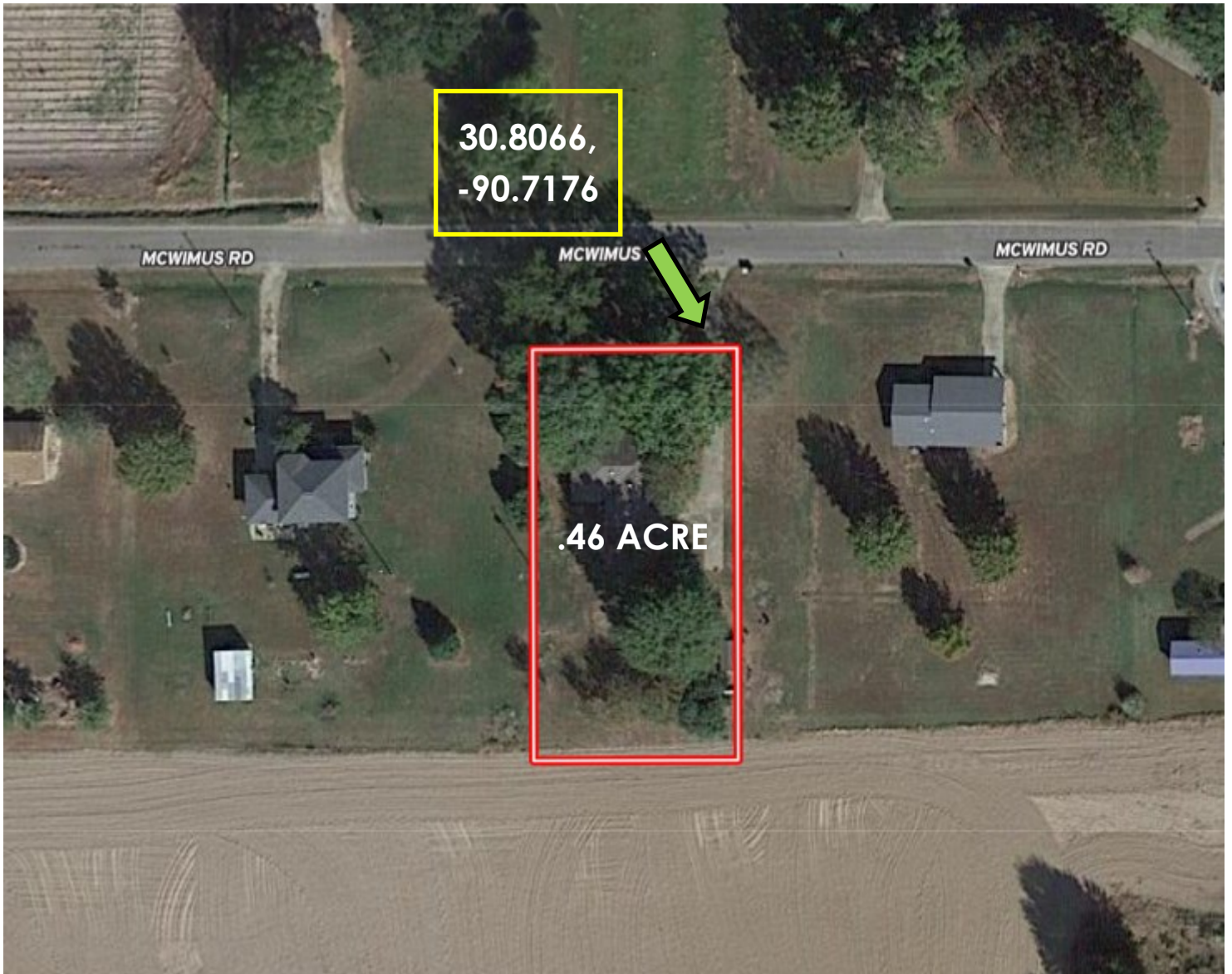
SARAH-REESE WRIGHT, REALTOR®
SarahReese@TomSmithLand.com
662.441.2500 office | 662.641.6696 cell



TomSmithLandandHomes.com

Information is believed to be accurate but not guaranteed.

AERIAL MAP



[Click for Interactive Map](#)

Call me today!

SARAH-REESE WRIGHT, REALTOR®
SarahReese@TomSmithLand.com
662.441.2500 office | 662.641.6696 cell



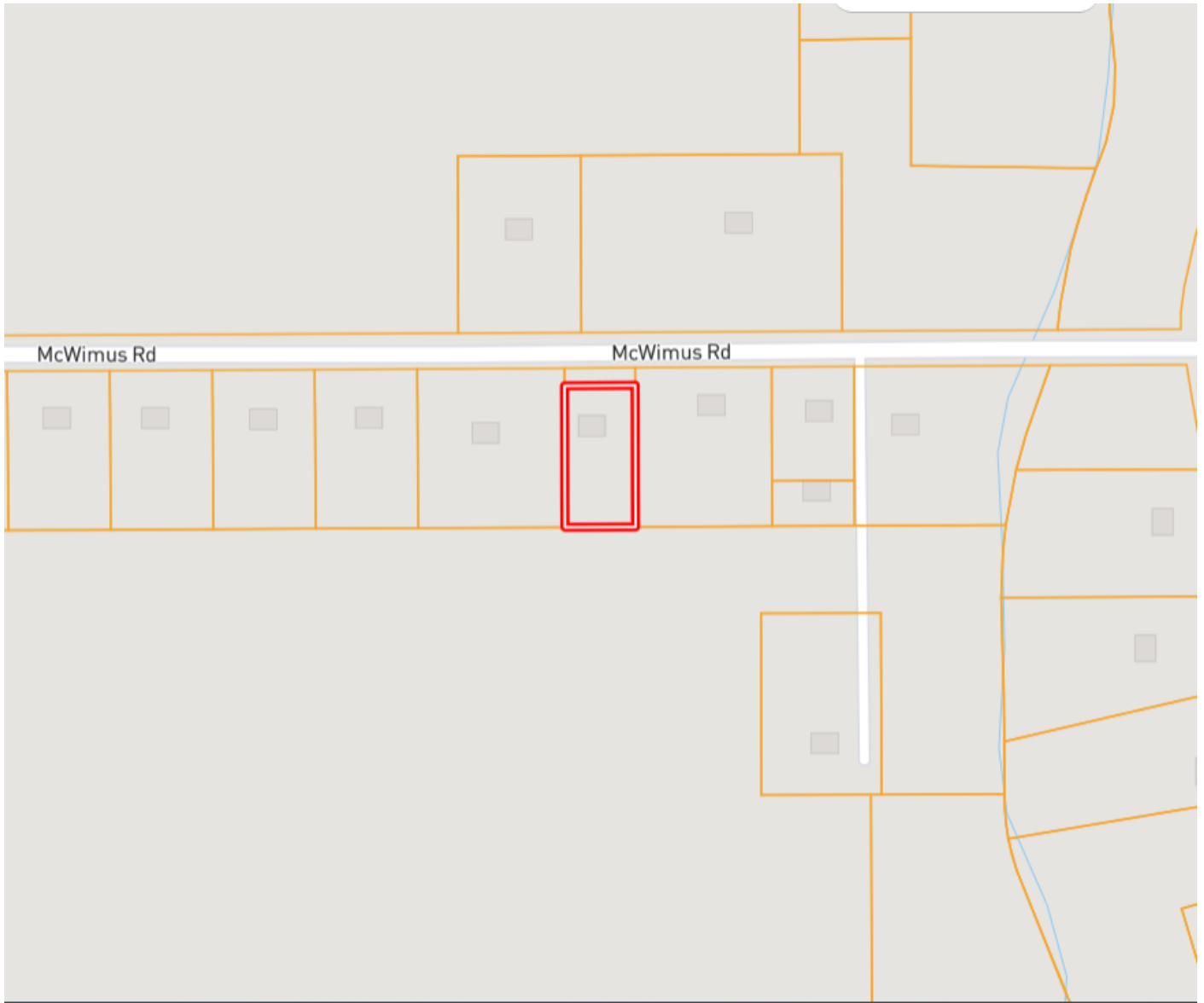
Expect More. Get More.



TomSmithLandandHomes.com

Information is believed to be accurate but not guaranteed.

OWNERSHIP MAP



Call me today!

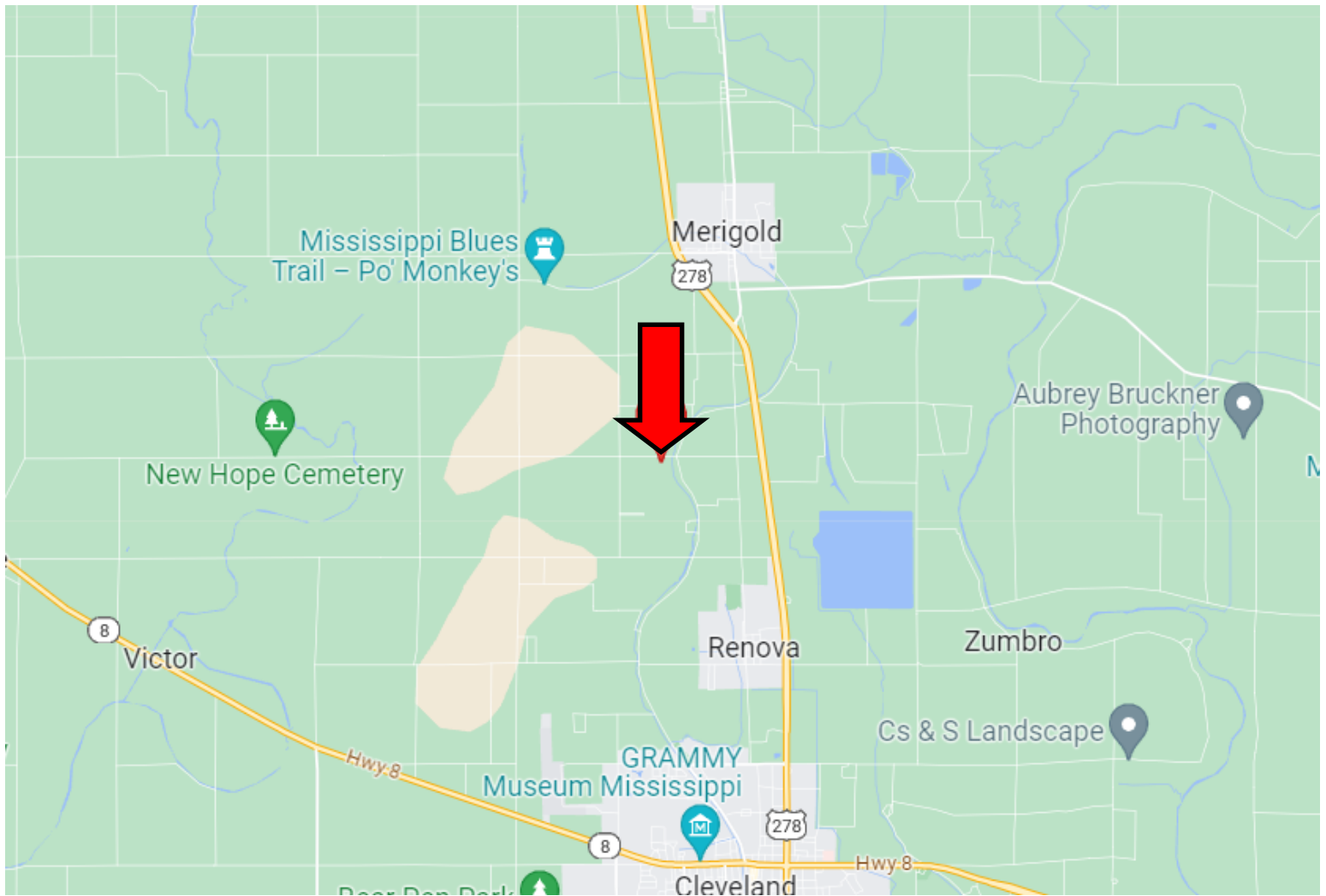
SARAH-REESE WRIGHT, REALTOR®
SarahReese@TomSmithLand.com
662.441.2500 office | 662.641.6696 cell



TomSmithLandandHomes.com

Information is believed to be accurate but not guaranteed.

DIRECTIONAL MAP



Address: 1275 McWimus Rd. Merigold, MS 38759

Directions from Hwy 8 and Hwy 61 Cleveland, MS: Travel North on Hwy 61 for approximately 4.1 miles. Turn left onto McWimus Rd. After 1 mile, the house will be on the left.

[Click for Google Maps.](#)



Call me today!

SARAH-REESE WRIGHT, REALTOR®
SarahReese@TomSmithLand.com
662.441.2500 office | 662.641.6696 cell



TomSmithLandandHomes.com

Information is believed to be accurate but not guaranteed.