

# BEAUTIFUL CYPRESS HOME

on 10± Acres in Madison County, MS

\$479,900

- 3-BEDROOM, 2-BATH HOME ON A 10± ACRE WOODED LOT IN MADISON COUNTY, MS
- SPACIOUS, LIGHT-FILLED INTERIOR WITH 10-FOOT CEILINGS AND WOOD FLOORING
- BUILT-IN GENERATOR AND SAFE ROOM
- SCREENED-IN PORCH
- FIRE PIT, GRILL AREA, SHED, DOG RUN, AND RAISED GARDEN
- ENERGY-EFFICIENT AND WELL-INSULATED
- RV PARKING WITH HOOKUPS
- THREE CAR GARAGE
- A PERFECT BLEND OF NATURE, MODERN CONVENIENCE, AND THOUGHTFUL DETAILS

330 ALLENWOOD DRIVE CANTON, MS 39046



**ELLEN  
SMITH**

Managing Broker

Office: 601.898.2772

Cell: 601.954.9395

Ellen@TomSmithHomes.com



Expect More. Get More.

**A Real Estate Expert You Can Trust**

TomSmithLandandHomes.com







Welcome to your dream home in Madison County, MS! This 3-bedroom, 2-bath cypress beauty is a true haven of comfort and functionality. Located on a 10± acre wooded lot, this property is a nature lover's paradise. As you step inside, you're welcomed by the spacious, light-filled interior featuring 10-foot ceilings that create an open, airy atmosphere. The entire home has wood flooring throughout, ensuring easy maintenance and a touch of timeless charm. This home is well-prepared for any situation, with a built-in generator and a safe room, providing peace of mind in times of need. Whether you're looking to entertain or relax in tranquility, the spacious screened-in porch is the perfect spot to enjoy the beautiful natural surroundings. Outdoors, you'll discover many amenities that will make you fall in love with this property even more. Gather around the fire pit for cozy evenings under the stars, or use the grill area for those weekend barbecues. The shed offers ample storage space, while the dog run ensures your furry family members have room to play and explore. A small raised garden allows you to cultivate your green thumb and grow your produce. This home is energy-efficient and well-insulated for the eco-conscious, keeping you comfortable year-round while saving on utility bills. If you're an RV enthusiast, you'll appreciate the RV parking with hookups and a separate address, making it easy for you to host friends or family on their road trips. This property also offers a spacious 3-car garage. Additionally, the primary bath features a luxurious shower with a shower head and body jets, adding an extra touch of luxury to your daily routine. This remarkable property uniquely combines natural beauty, modern convenience, and thoughtful details. Take advantage of the opportunity to experience the best of Madison County living. Call Ellen to schedule a viewing today and make this exceptional home yours!



**ELLEN  
SMITH**

Managing Broker

Office: 601.898.2772

Cell: 601.954.9395

[Ellen@TomSmithHomes.com](mailto:Ellen@TomSmithHomes.com)



**A Real Estate Expert You Can Trust**

[TomSmithLandandHomes.com](http://TomSmithLandandHomes.com)







**ELLEN SMITH**

MANAGING BROKER

Office: 601.898.2772

Cell: 601.954.9395

Ellen@TomSmithHomes.com



**A Real Estate Expert You Can Trust**

TomSmithLandandHomes.com

Information is believed to be accurate but not guaranteed.







**ELLEN SMITH**

MANAGING BROKER

Office: 601.898.2772

Cell: 601.954.9395

[Ellen@TomSmithHomes.com](mailto:Ellen@TomSmithHomes.com)



**A Real Estate Expert You Can Trust**

[TomSmithLandandHomes.com](http://TomSmithLandandHomes.com)

Information is believed to be accurate but not guaranteed.







**ELLEN SMITH**

MANAGING BROKER

Office: 601.898.2772

Cell: 601.954.9395

Ellen@TomSmithHomes.com

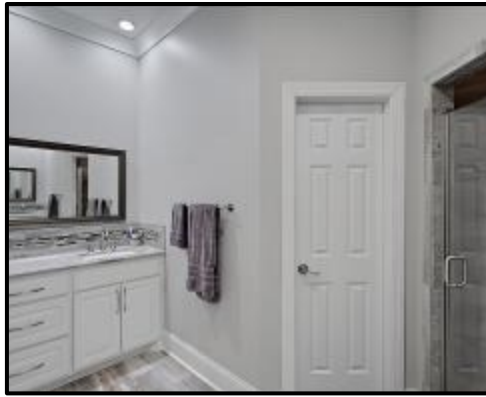


**A Real Estate Expert You Can Trust**

TomSmithLandandHomes.com

Information is believed to be accurate but not guaranteed.





**ELLEN SMITH**

MANAGING BROKER

Office: 601.898.2772

Cell: 601.954.9395

Ellen@TomSmithHomes.com



**A Real Estate Expert You Can Trust**

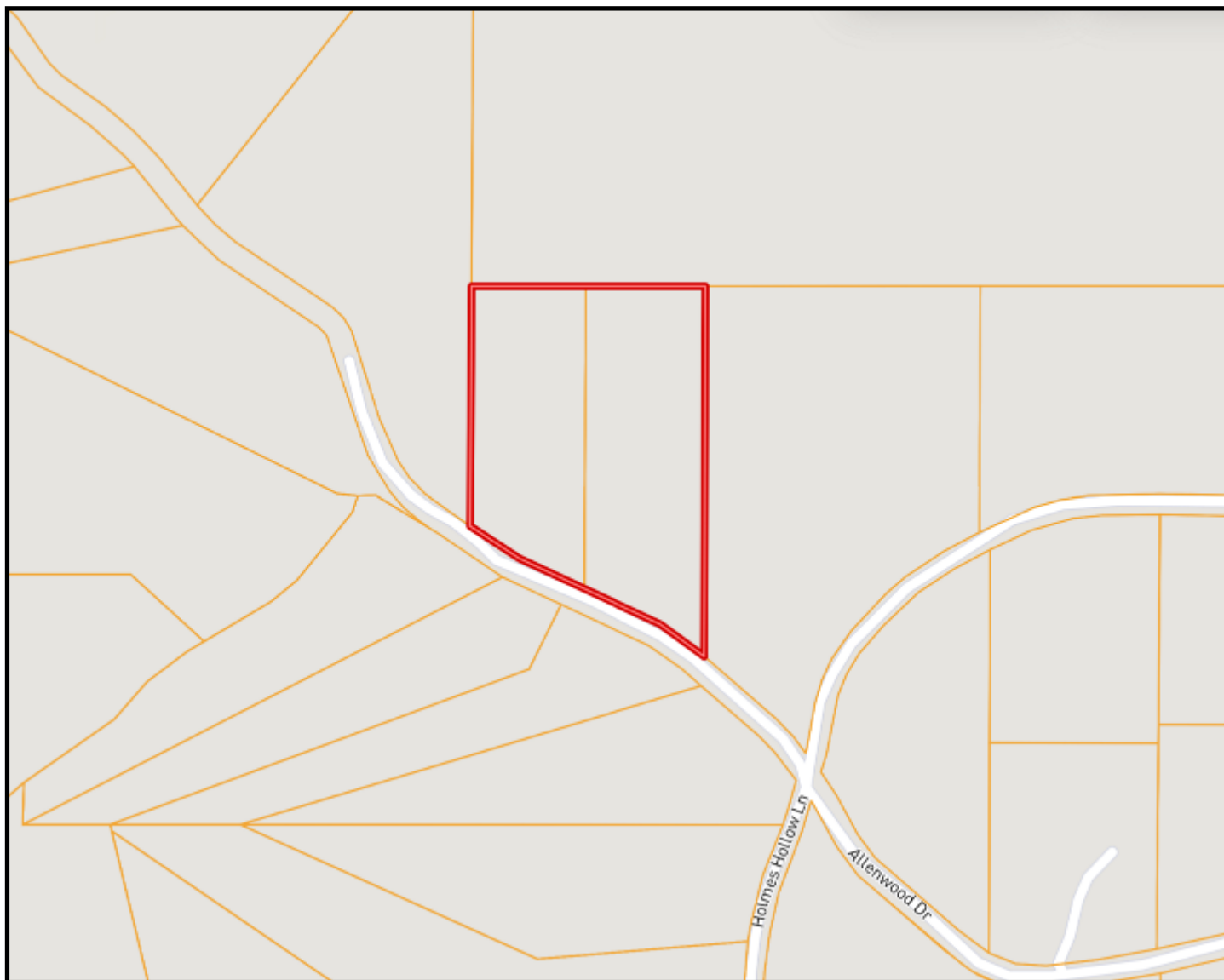
TomSmithLandandHomes.com

Information is believed to be accurate but not guaranteed.





# Ownership Map



**ELLEN SMITH**

MANAGING BROKER

Office: 601.898.2772

Cell: 601.954.9395

[Ellen@TomSmithHomes.com](mailto:Ellen@TomSmithHomes.com)



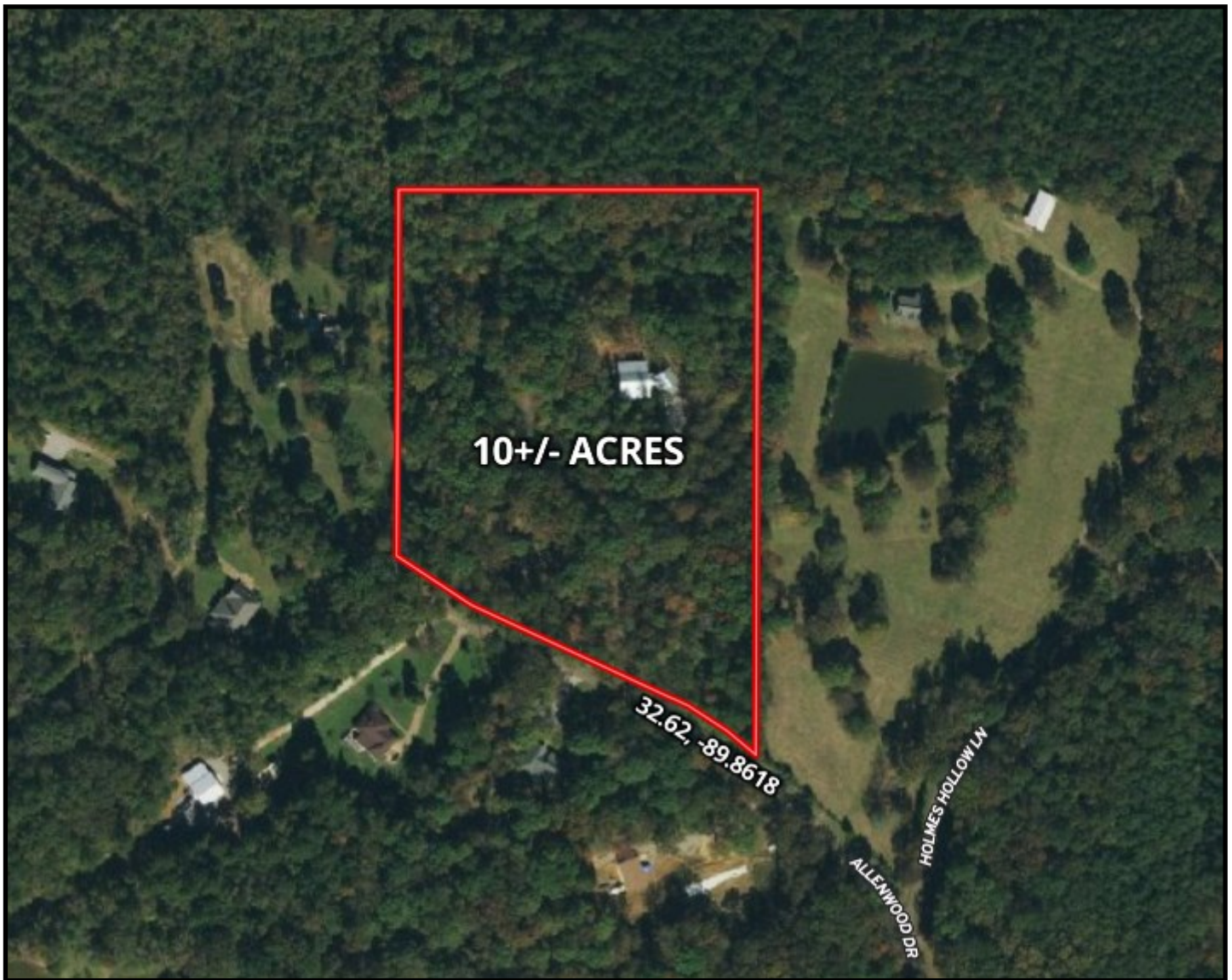
**A Real Estate Expert You Can Trust**

[TomSmithLandandHomes.com](http://TomSmithLandandHomes.com)

Information is believed to be accurate but not guaranteed.



# Aerial Map



Click Here for an Interactive Map Link

**ELLEN SMITH**

MANAGING BROKER

Office: 601.898.2772

Cell: 601.954.9395

Ellen@TomSmithHomes.com



**A Real Estate Expert You Can Trust**

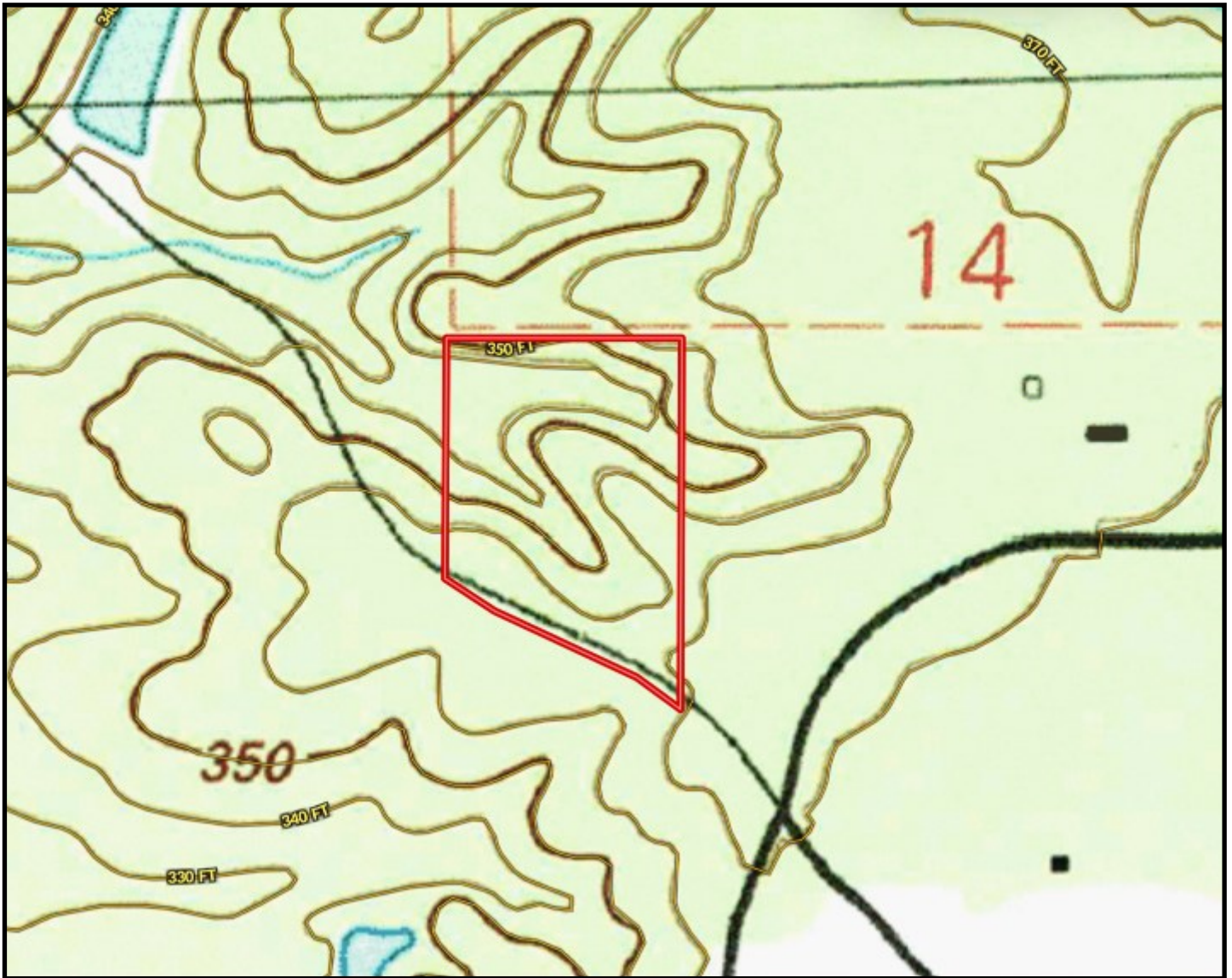
TomSmithLandandHomes.com

Information is believed to be accurate but not guaranteed.





# Topography Map



**ELLEN SMITH**

MANAGING BROKER

Office: 601.898.2772

Cell: 601.954.9395

[Ellen@TomSmithHomes.com](mailto:Ellen@TomSmithHomes.com)



**A Real Estate Expert You Can Trust**

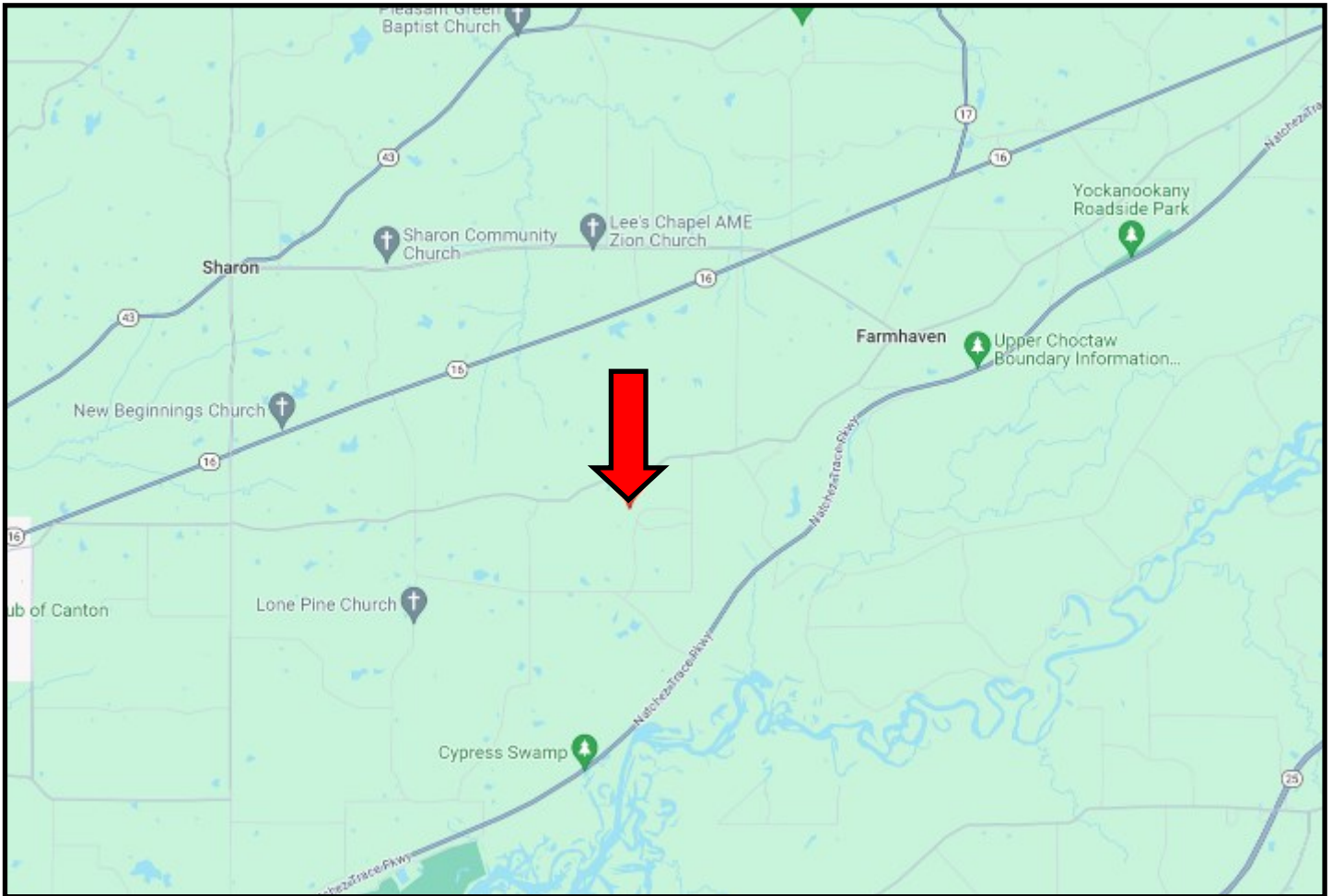
[TomSmithLandandHomes.com](http://TomSmithLandandHomes.com)

Information is believed to be accurate but not guaranteed.





# Directional Map



DIRECTIONS FROM THE NACHEZ TRACE AND RATLIFF FERRY ROAD IN CANTON MS:  
Turn left onto Ratliff Ferry Road and travel 1 mile. Turn right onto Holmes Hollow Lane and travel .9 miles. Turn left onto Allenwood Drive. After .1 mile, the home will be on the right.  
**330 ALLENWOOD DRIVE CANTON, MS 39046**—CLICK FOR DIRECTIONS



**ELLEN  
SMITH**

Managing Broker

Office: 601.898.2772

Cell: 601.954.9395

Ellen@TomSmithHomes.com



**A Real Estate Expert You Can Trust**

TomSmithLandandHomes.com

