

Charming Brick Home

BOLIVAR COUNTY, MS



1012 Lamar St. Cleveland, MS 38732

\$165,500

Check out this charming 3-bedroom, 2-bathroom residence in Bolivar County, MS, in the Cleveland school district. This 1,466 sqft gem has a fresh paint job and recent updates. Situated on a corner lot, this home presents a spacious backyard and a storage shed. Additionally, it comes with a covered carport featuring a storeroom, a roomy den, and a convenient laundry room. The heart of this home is the galley-style kitchen, featuring beautiful new butcher block countertops and an eat-in area. There's also a separate dining room for more formal occasions. Perfect for hosting guests, this property offers an inviting atmosphere you will want to experience. To see it for yourself, contact Lindsay today to schedule your viewing.

Directions from Hwy 8 and Hwy 61 Cleveland, MS: Travel West on Hwy 8 for approximately 1 mile. Turn left onto N. 5th Ave and in 0.5 miles turn right onto Lamar Street. In 492 ft, the house will be on the right. [Click for Google Maps.](#)



**LINDSAY
WILLIAMS**
REALTOR®

Office: 662.441.2500

Cell: 662.719.8118

Lindsay@TomSmithLand.com

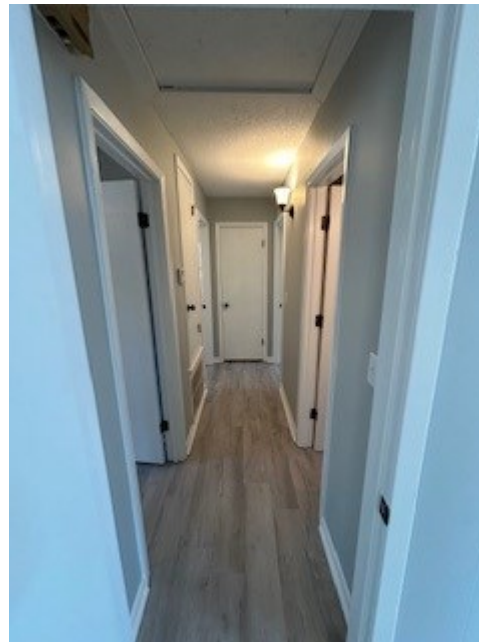


A Real Estate Expert You Can Trust

TomSmithLandandHomes.com

Information is believed to be accurate but not guaranteed.





Kitchen, Livingroom and Hallway

LINDSAY WILLIAMS
REALTOR®

Office: 662.441.2500

Cell: 662.719.8118

Lindsay@TomSmithLand.com



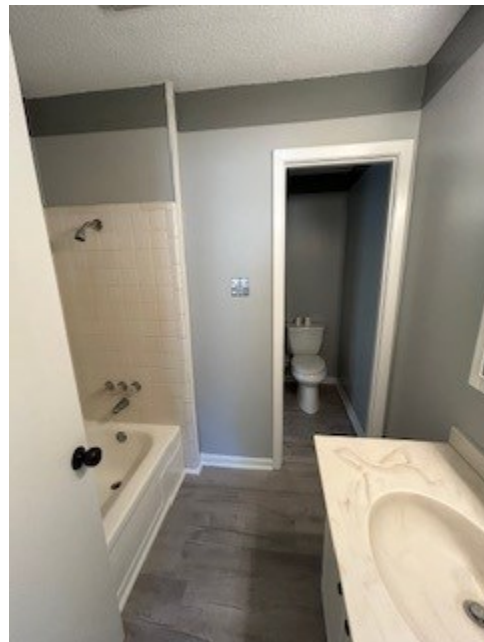
A Real Estate Expert You Can Trust
TomSmithLandandHomes.com

Information is believed to be accurate but not guaranteed.





Three Bedrooms Two Bathrooms



LINDSAY WILLIAMS
REALTOR®

Office: 662.441.2500

Cell: 662.719.8118

Lindsay@TomSmithLand.com



A Real Estate Expert You Can Trust
TomSmithLandandHomes.com

Information is believed to be accurate but not guaranteed.

11th Annual
2011-2023
BEST
BROKERAGES



Shed and Backyard

LINDSAY WILLIAMS
REALTOR®

Office: 662.441.2500

Cell: 662.719.8118

Lindsay@TomSmithLand.com

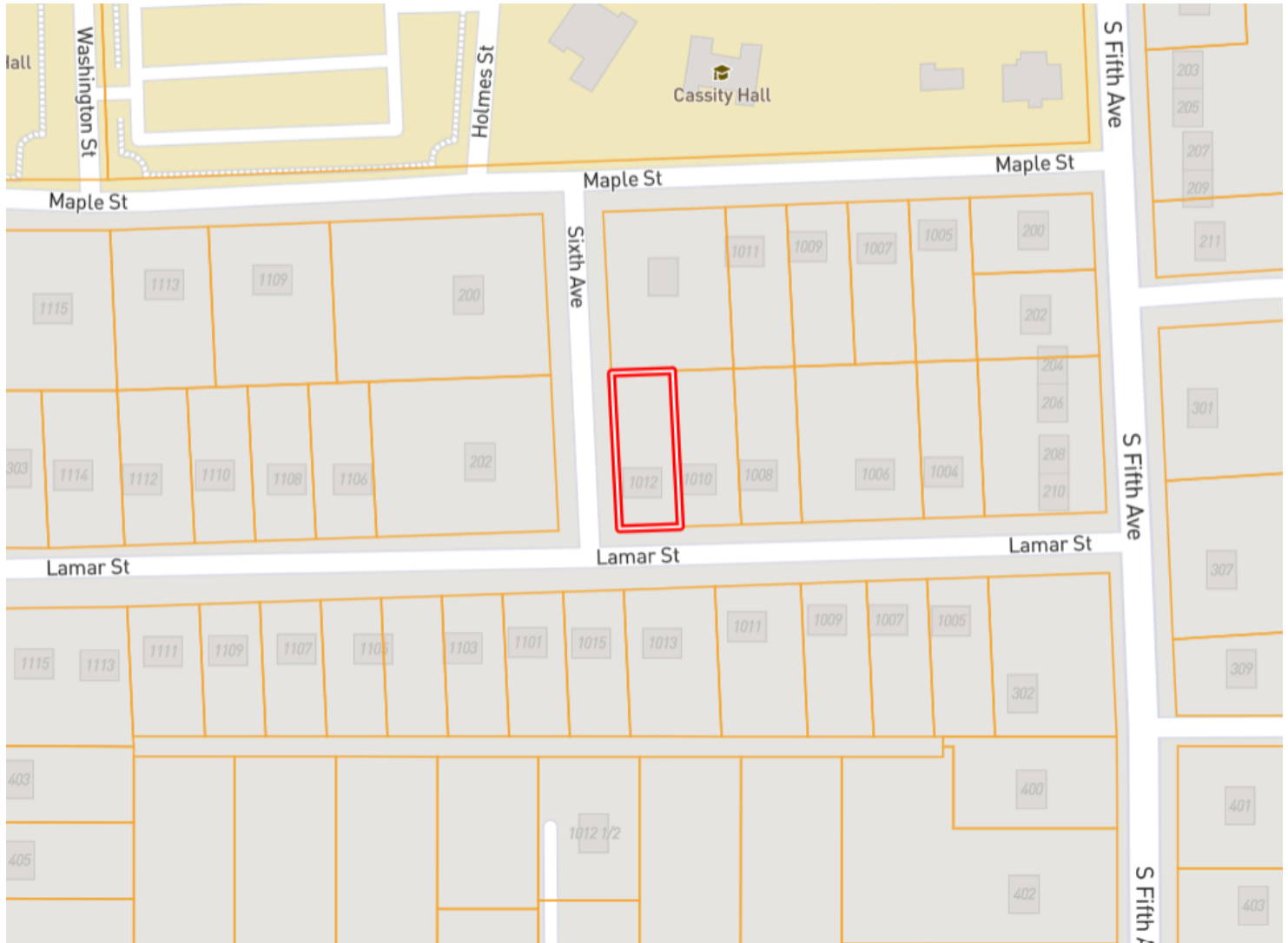


A Real Estate Expert You Can Trust
TomSmithLandandHomes.com

Information is believed to be accurate but not guaranteed.



Ownership Map



LINDSAY WILLIAMS

REALTOR®

Office: 662.441.2500

Cell: 662.719.8118

Lindsay@TomSmithLand.com



A Real Estate Expert You Can Trust

TomSmithLandandHomes.com

Information is believed to be accurate but not guaranteed.



Aerial Map



Click for Interactive Map

LINDSAY WILLIAMS
REALTOR®

Office: 662.441.2500

Cell: 662.719.8118

Lindsay@TomSmithLand.com

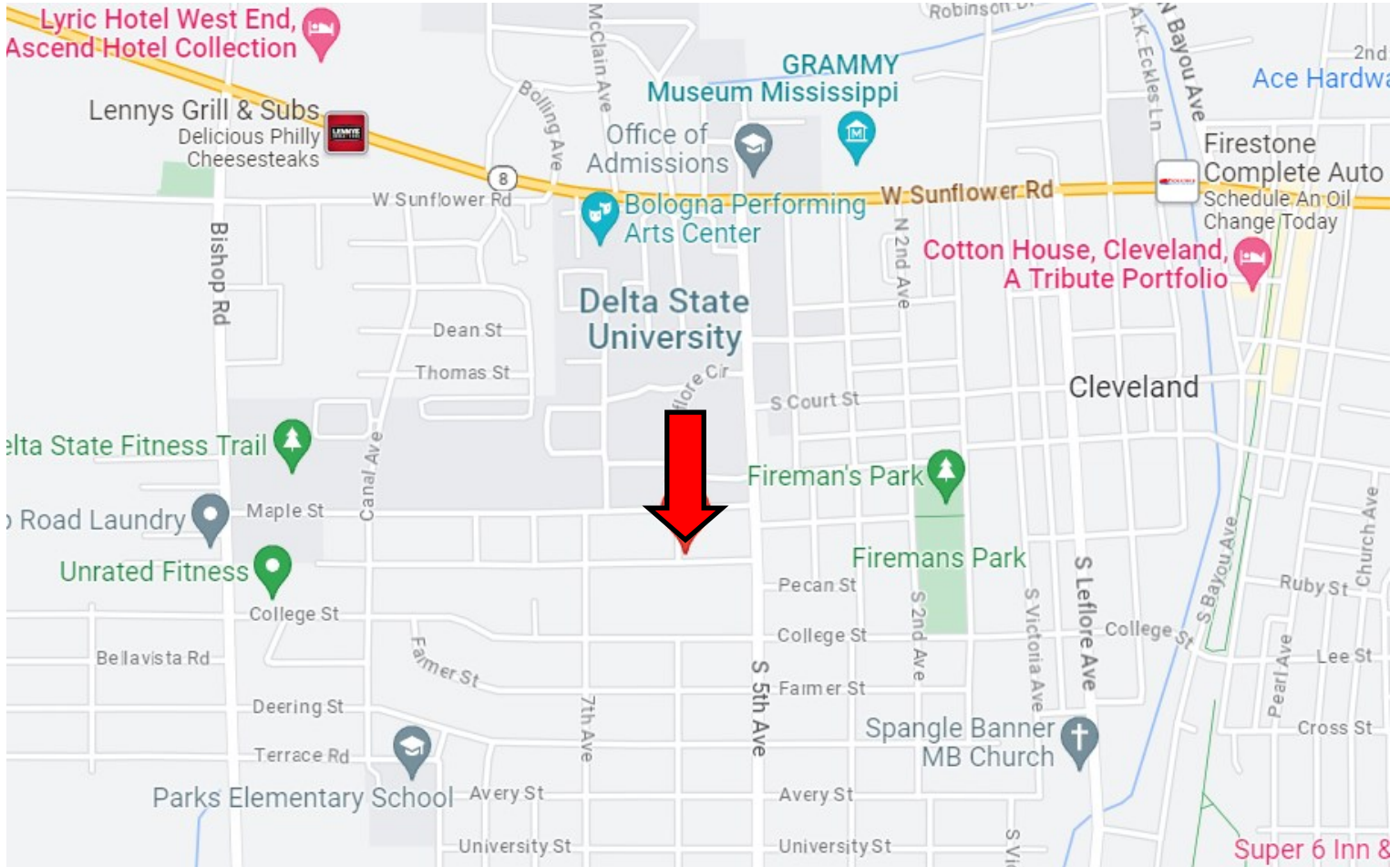


A Real Estate Expert You Can Trust
TomSmithLandandHomes.com

Information is believed to be accurate but not guaranteed.



Directional Map



Address: 1012 Lamar St. Cleveland, MS 38732

Directions from Hwy 8 and Hwy 61 Cleveland, MS: Travel West on Hwy 8 for approximately 1 mile. Turn left onto N. 5th Ave and in 0.5 miles turn right onto Lamar Street. In 492 ft, the house will be on the right. [Click for Google Maps.](#)



**LINDSAY
WILLIAMS**
REALTOR®

Office: 662.441.2500

Cell: 662.719.8118

Lindsay@TomSmithLand.com



A Real Estate Expert You Can Trust

TomSmithLandandHomes.com

Information is believed to be accurate but not guaranteed.

