

**515 Meadow Lane
Cleveland, MS 38732
Bolivar County
\$83,500**



Discover comfort and style in this charming 864± SF residence featuring three bedrooms and one bathroom. Step inside to find beautiful hardwood floors, complemented by a tastefully remodeled kitchen that seamlessly blends modern convenience with elegance. The backyard has a convenient storage shed and a backdrop that opens to an open field. Whether you envision it as your dream home or a valuable addition to your rental portfolio. Call Tracey Bell to schedule your private showing! *Agent Owned*



**TRACEY
BELL**

MANAGING BROKER

Office: 662.441.2500

Cell: 662.719.4720

Tracey@TomSmithLand.com



A Real Estate Expert You Can Trust

TomSmithLandandHomes.com

Information is believed to be accurate but not guaranteed.





**TRACEY
BELL**
MANAGING BROKER
Office: 662.441.2500
Cell: 662.719.4720
Tracey@TomSmithLand.com



A Real Estate Expert You Can Trust
TomSmithLandandHomes.com

Information is believed to be accurate but not guaranteed.





- 3 Bedroom
- 1 Bathroom
- 864± SF
- Hardwood Floors
- Large Backyard
- Shed
- Agent Owned



**TRACEY
BELL**

MANAGING BROKER

Office: 662.441.2500

Cell: 662.719.4720

Tracey@TomSmithLand.com



A Real Estate Expert You Can Trust
TomSmithLandandHomes.com

Information is believed to be accurate but not guaranteed.



AERIAL MAP

33.7321, -90.7301

0.18±
acres

[Click for Interactive Map](#)

**TRACEY
BELL**

MANAGING BROKER

Office: 662.441.2500

Cell: 662.719.4720

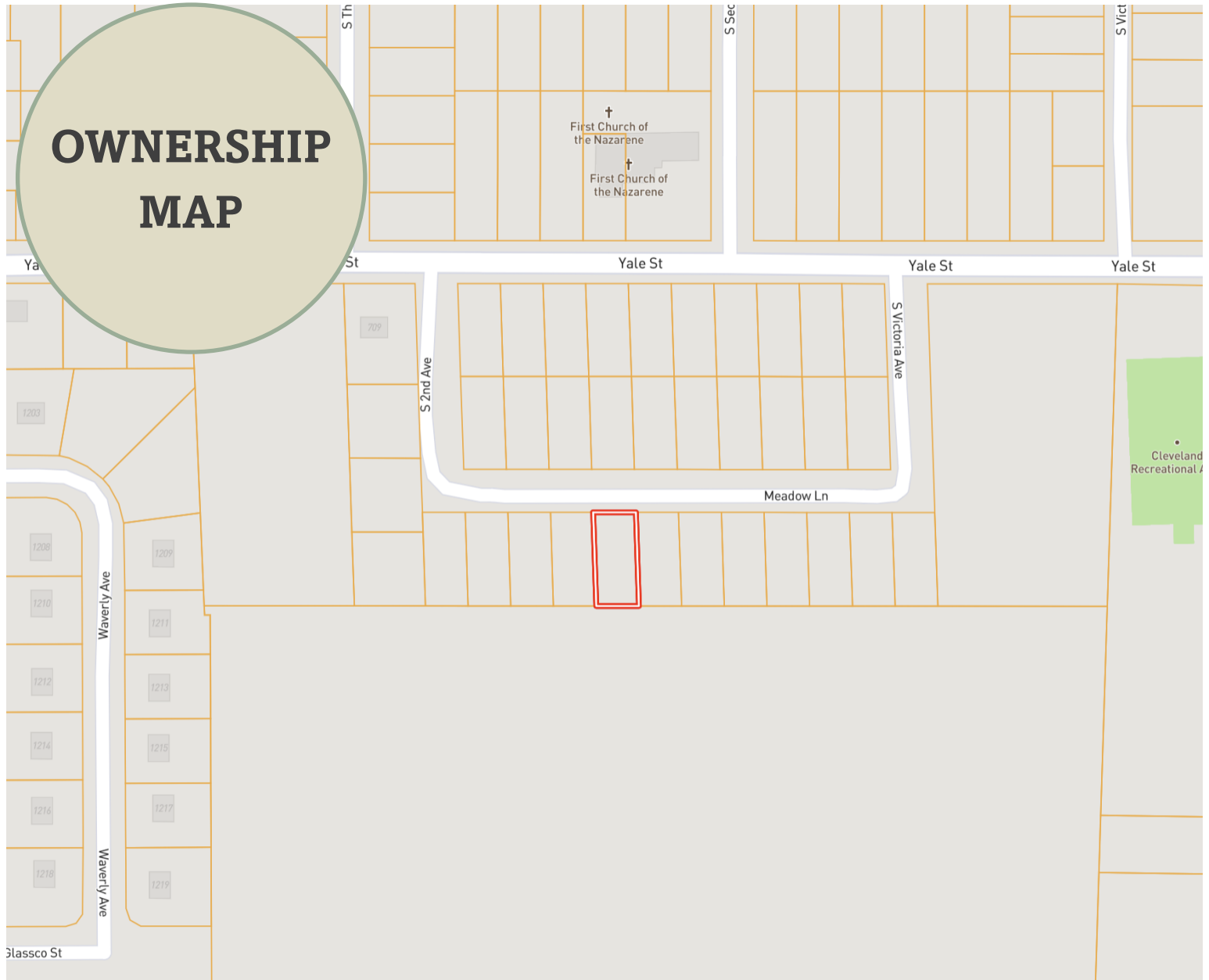
Tracey@TomSmithLand.com



A Real Estate Expert You Can Trust
TomSmithLandandHomes.com

Information is believed to be accurate but not guaranteed.





**TRACEY
BELL**

MANAGING BROKER

Office: 662.441.2500

Cell: 662.719.4720

Tracey@TomSmithLand.com

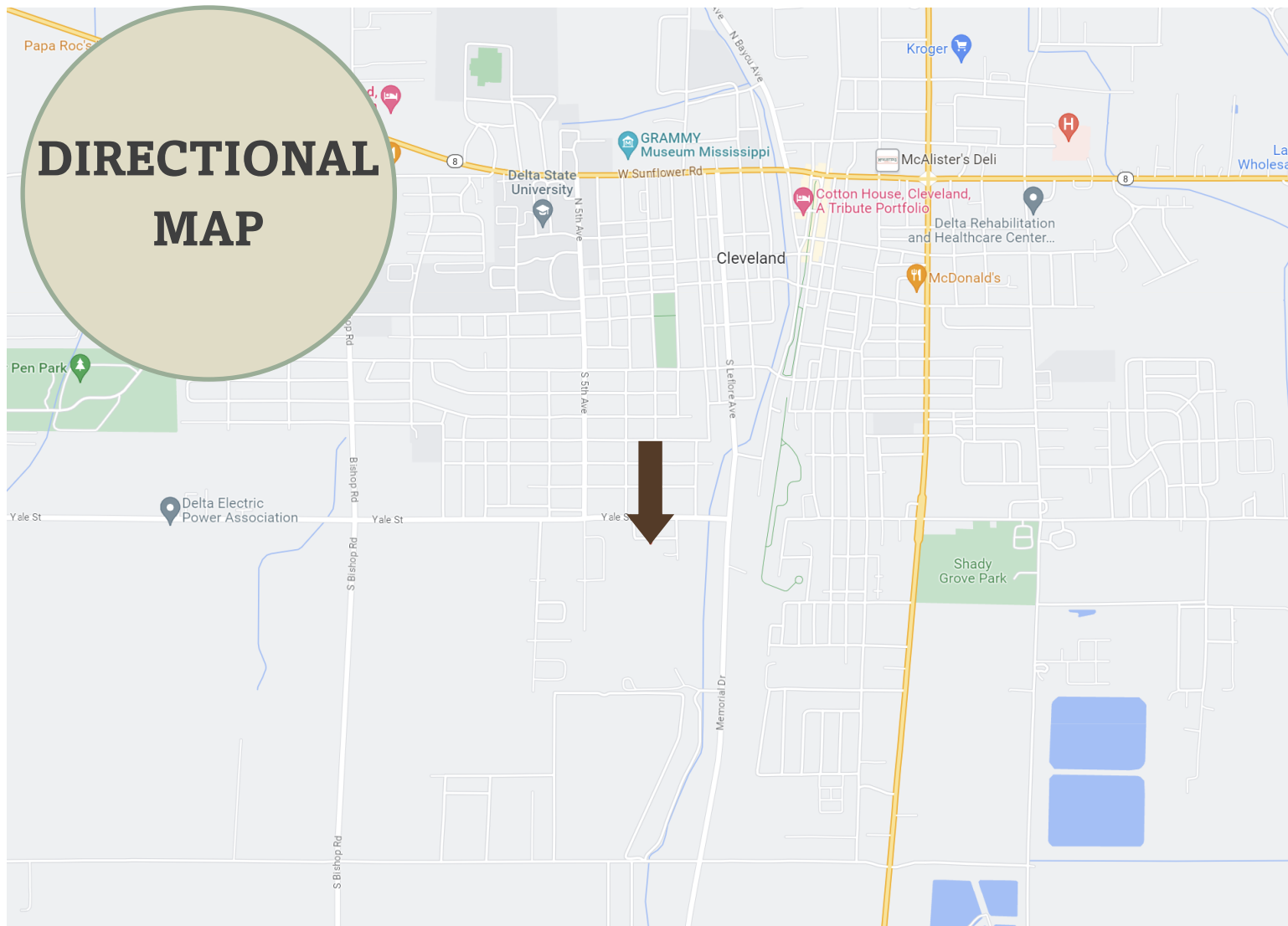


A Real Estate Expert You Can Trust
TomSmithLandandHomes.com

Information is believed to be accurate but not guaranteed.



DIRECTIONAL MAP



Address: 515 Meadow Lane, Cleveland, MS 38732

Directions from Hwy 8 and Hwy 61 Cleveland, MS: Head west on E. Sunflower Road for 0.6 miles, then turn left onto N. Leflore Ave. Travel for 1 mile before turning right onto Yale Street. Turn left onto S. Victoria Avenue, then take the next right onto Meadow Lane. After 407 feet, the house will be on the left.

[Click for Google Maps.](#)



**TRACEY
BELL**

MANAGING BROKER

Office: 662.441.2500

Cell: 662.719.4720

Tracey@TomSmithLand.com



A Real Estate Expert You Can Trust

TomSmithLandandHomes.com

Information is believed to be accurate but not guaranteed.

