

Sunflower County Fixer-Upper



130 N 3rd St. Drew, MS 38737

\$79,500

Attention Investors! Look at this Sunflower County home situated on a large, .69± acre lot in Drew, MS. This charming French-style residence spans two stories and offers 2,844 square feet of heated, cooled living space. This spacious home features four bedrooms, two and a half bathrooms, and a formal dining room and living room. The lower level has a primary bedroom with an ensuite bathroom, a sunken jacuzzi tub, and a walk-in shower. Additionally, there's a walk-in closet with a separate dressing area. Upstairs, you'll find three more bedrooms and another full bathroom. The garage has a half bathroom, pantry, solid pine walls, and ceilings and provides secure vehicle storage. A separate storage building with a carport is available to house your tools. This property is being sold "AS IS" and is ideal for investors. Call Bruce to schedule your viewing today!



**BRUCE
WEST**
REALTOR®

Office: 662.441.2500

Cell: 662.873.3007

Bruce@TomSmithLand.com



A Real Estate Expert You Can Trust

TomSmithLandandHomes.com

Information is believed to be accurate but not guaranteed.





BRUCE WEST
REALTOR®
Office: 662.441.2500
Cell: 662.873.3007
Bruce@TomSmithLand.com



A Real Estate Expert You Can Trust
TomSmithLandandHomes.com

Information is believed to be accurate but not guaranteed.





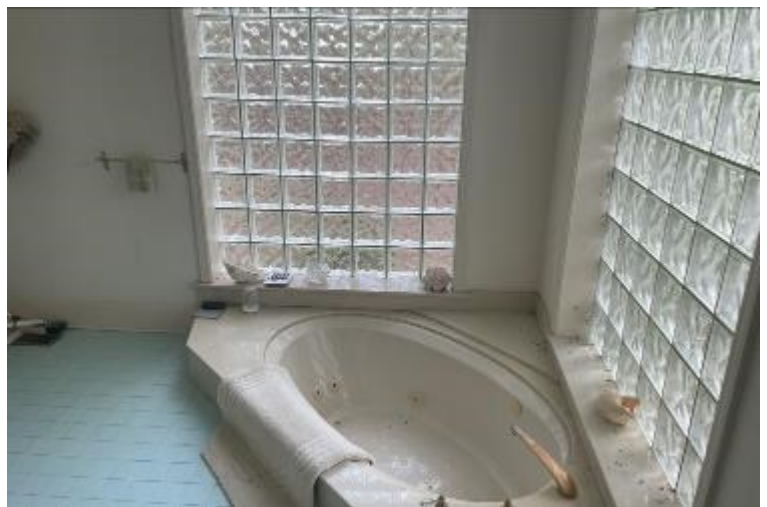
BRUCE WEST
REALTOR®
Office: 662.441.2500
Cell: 662.873.3007
Bruce@TomSmithLand.com



A Real Estate Expert You Can Trust
TomSmithLandandHomes.com

Information is believed to be accurate but not guaranteed.





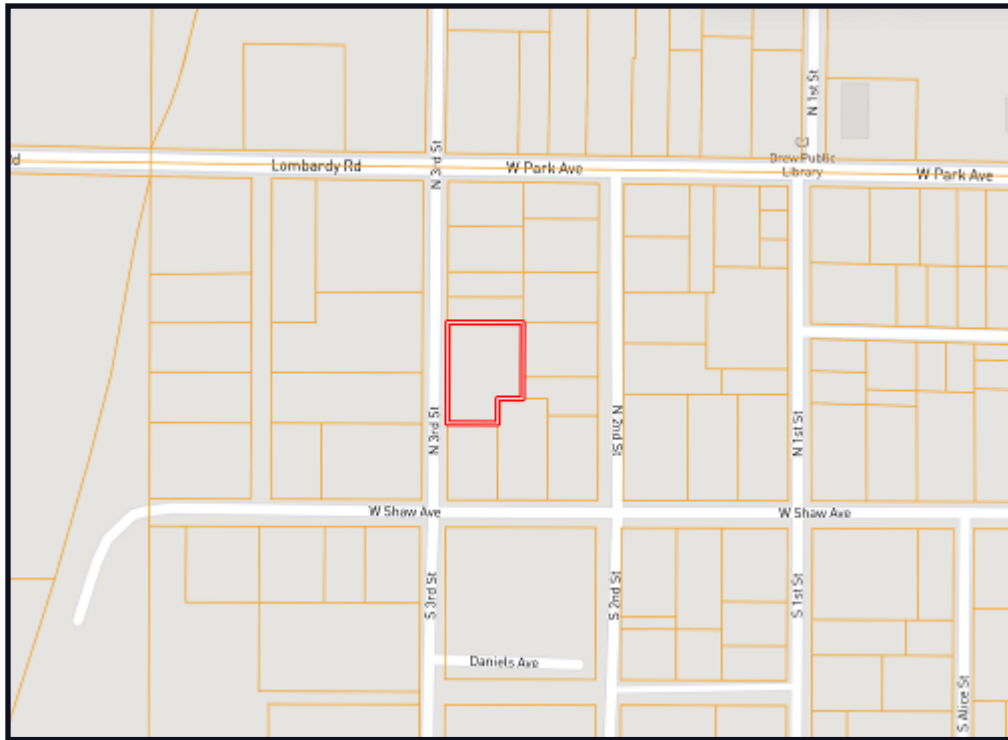
BRUCE WEST
REALTOR®
Office: 662.441.2500
Cell: 662.873.3007
Bruce@TomSmithLand.com



A Real Estate Expert You Can Trust
TomSmithLandandHomes.com

Information is believed to be accurate but not guaranteed.





Ownership Map



Aerial Map

[Click Here for an
Interactive Map](#)

BRUCE WEST
REALTOR®
Office: 662.441.2500
Cell: 662.873.3007
Bruce@TomSmithLand.com

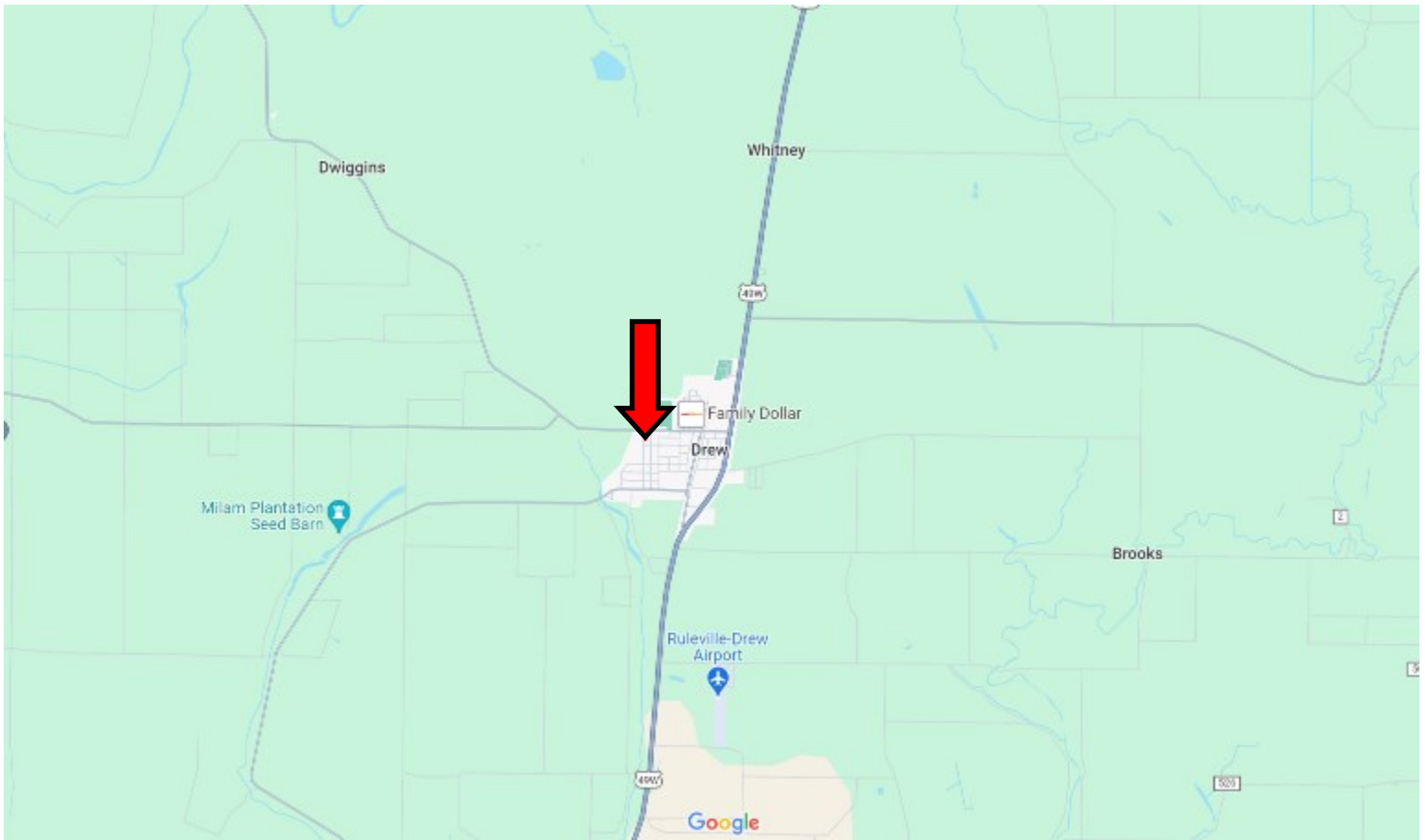


A Real Estate Expert You Can Trust
TomSmithLandandHomes.com

Information is believed to be accurate but not guaranteed.



Directional Map



Directions from Hwy 49W and E Park Ave. in Drew, MS: Travel E Park Ave. for .8 miles. Turn left onto N 3rd St. After 370 feet, the home will be on your left.
130 N 3rd St. Drew, MS 38737—Google Map Link



**BRUCE
WEST**
REALTOR®

Office: 662.441.2500
Cell: 662.873.3007
Bruce@TomSmithLand.com



A Real Estate Expert You Can Trust

TomSmithLandandHomes.com

Information is believed to be accurate but not guaranteed.

