

# Country Retreat

28± ACRES WITH A HOME IN HINDS COUNTY, MS

\$566,000

Take a look at this 28+ acre property featuring a beautiful 3,632 sq ft residence located within the serene landscape of Southwest Hinds County. This charming 2-story home offers many features that provide comfort, style, and tranquility. Step inside to discover a spacious floor plan that radiates warmth and charm. With four bedrooms and 2.5 baths, there's plenty of space for your family and guests. The kitchen is generously sized, providing all the space you need. The large family room is ideal for gatherings, while a dedicated game room, complete with a pool table, promises endless entertainment possibilities. Whether you prefer formal dining or a casual breakfast, you'll find options in the inviting dining areas. Recent upgrades, including a new roof and a downstairs air conditioner, ensure your investment, and your comfort is guaranteed year-round. The main bedroom is a true retreat that will impress. This custom-built residence has had just one owner, reflecting the care and craftsmanship invested in its construction. Inside, you'll discover abundant cabinets, built-in bookshelves, and other thoughtful details that enhance the convenience and delight of daily living. The exterior of this home is a combination of beautiful brick and cypress. Step out onto the front porch and be captivated by breathtaking sunrise and sunset views overlooking a 10± acre stocked lake, creating a sense of peace and tranquility. The long, paved driveway adds a touch of grandeur as it leads you to this idyllic retreat. Additional features include a large carport with two attached storage rooms, offering ample space for your vehicles and storage requirements. The quality of this custom-built home is undeniable, ready to welcome its next owner into a world of comfort and serenity. Take advantage of the opportunity to make this remarkable property your own and experience the beauty of Southwest Hinds County while living the life you've always dreamed of. Call Chad to schedule your showing today!

1203 Utica Bypass Road Utica, MS 39175



**CHAD  
WILSON**  
REALTOR®

Office: 601.898.2772

Cell: 601.750.1970

Chad@TomSmithLand.com



**A Real Estate Expert You Can Trust**

TomSmithLandandHomes.com

Information is believed to be accurate but not guaranteed.





**CHAD WILSON**

REALTOR®

Office: 601.898.2772

Cell: 601.750.1970

Chad@TomSmithLand.com



**A Real Estate Expert You Can Trust**

TomSmithLandandHomes.com

Information is believed to be accurate but not guaranteed.





**CHAD WILSON**

REALTOR®

Office: 601.898.2772

Cell: 601.750.1970

Chad@TomSmithLand.com



**A Real Estate Expert You Can Trust**

TomSmithLandandHomes.com

Information is believed to be accurate but not guaranteed.





**CHAD WILSON**

REALTOR®

Office: 601.898.2772

Cell: 601.750.1970

Chad@TomSmithLand.com



**A Real Estate Expert You Can Trust**

TomSmithLandandHomes.com

Information is believed to be accurate but not guaranteed.





**CHAD WILSON**

REALTOR®

Office: 601.898.2772

Cell: 601.750.1970

Chad@TomSmithLand.com



**A Real Estate Expert You Can Trust**

TomSmithLandandHomes.com

Information is believed to be accurate but not guaranteed.





**CHAD WILSON**

REALTOR®

Office: 601.898.2772

Cell: 601.750.1970

Chad@TomSmithLand.com



**A Real Estate Expert You Can Trust**

TomSmithLandandHomes.com

Information is believed to be accurate but not guaranteed.



# AERIAL MAP



[Click Here for an Interactive Map](#)

**CHAD WILSON**  
REALTOR®

Office: 601.898.2772

Cell: 601.750.1970

Chad@TomSmithLand.com

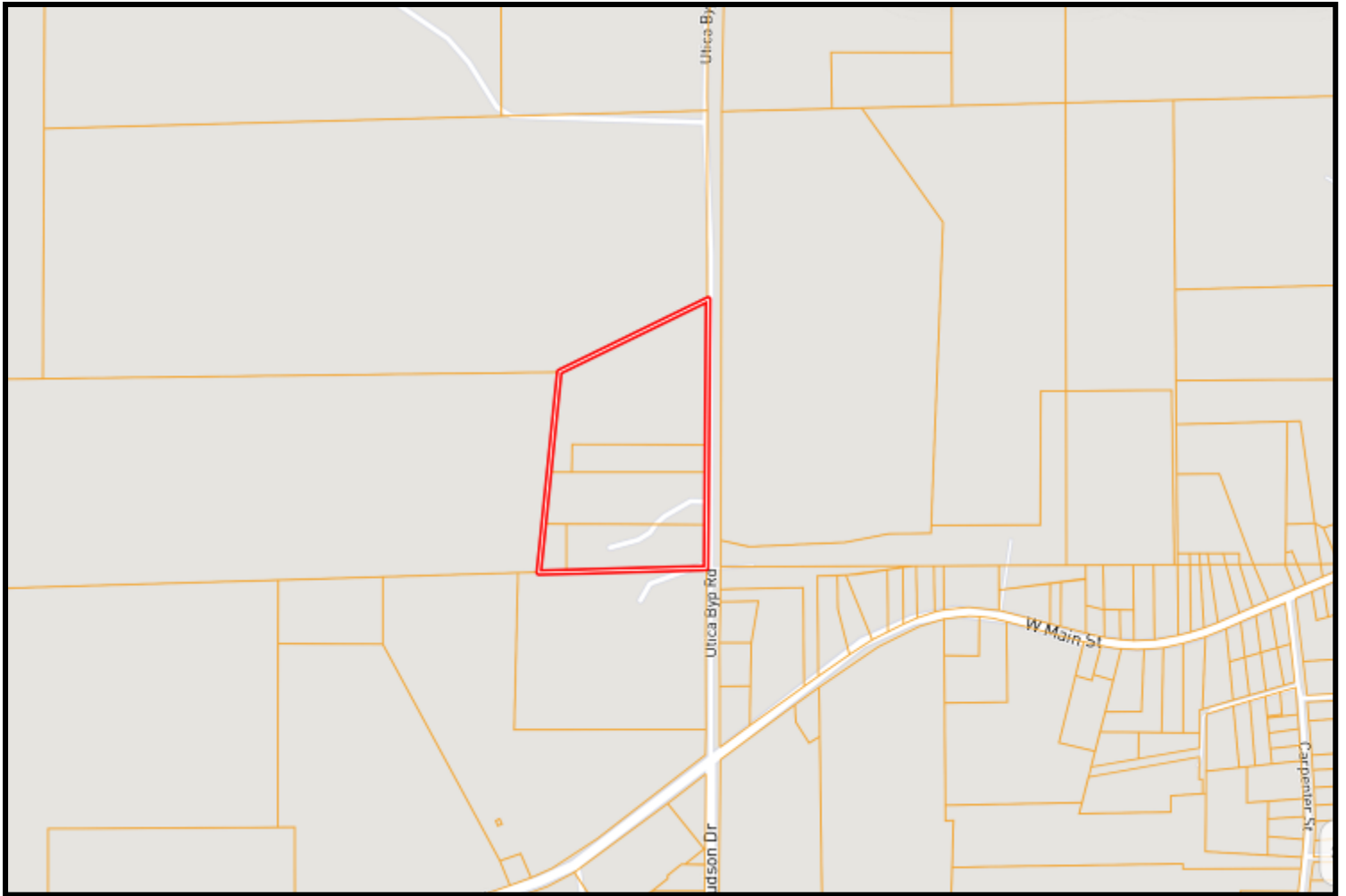


**A Real Estate Expert You Can Trust**  
TomSmithLandandHomes.com

Information is believed to be accurate but not guaranteed.



# OWNERSHIP MAP



**CHAD WILSON**  
REALTOR®

Office: 601.898.2772

Cell: 601.750.1970

[Chad@TomSmithLand.com](mailto:Chad@TomSmithLand.com)



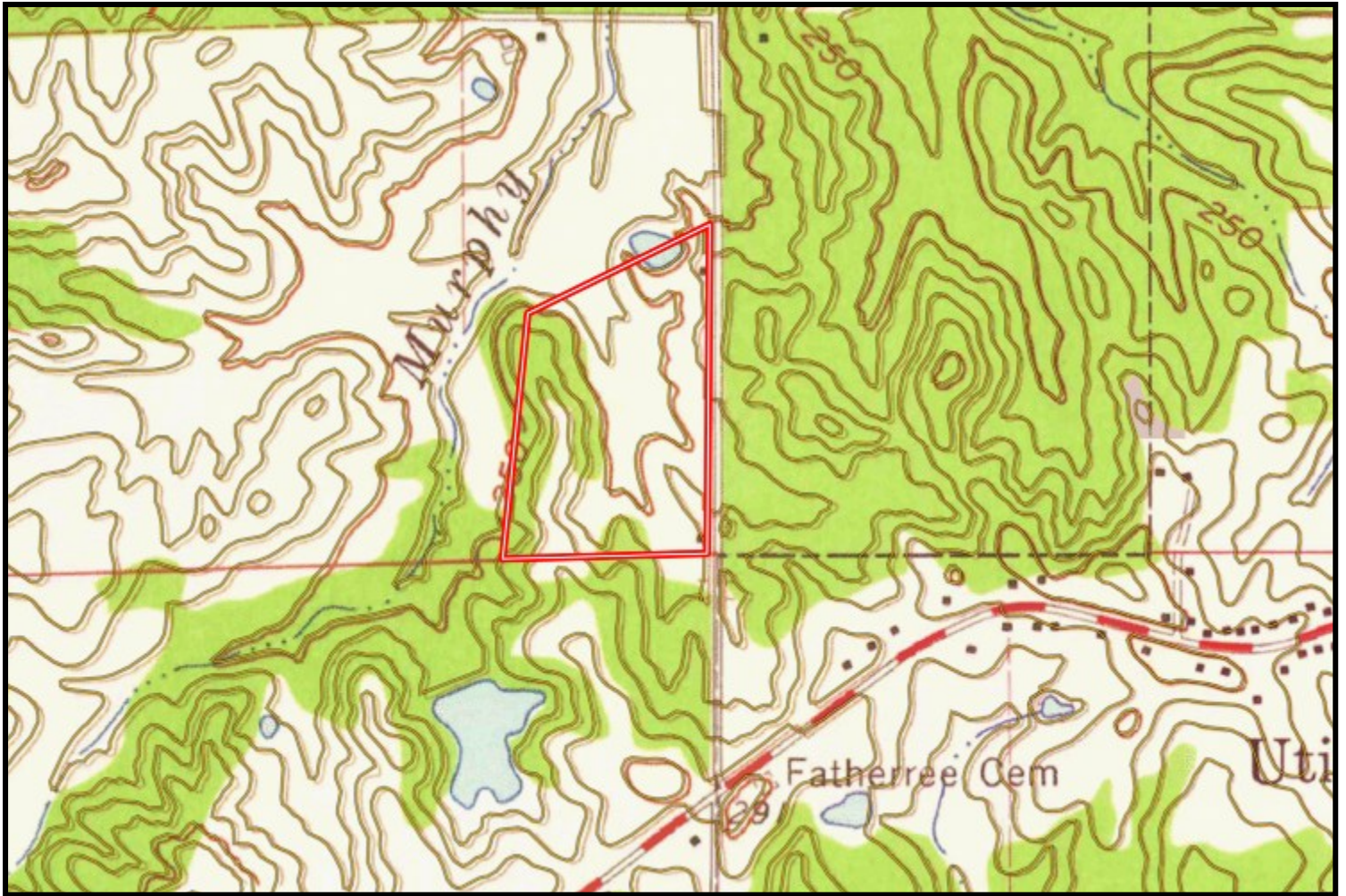
**A Real Estate Expert You Can Trust**

[TomSmithLandandHomes.com](http://TomSmithLandandHomes.com)

Information is believed to be accurate but not guaranteed.



# TOPO MAP



**CHAD WILSON**  
REALTOR®

Office: 601.898.2772

Cell: 601.750.1970

Chad@TomSmithLand.com



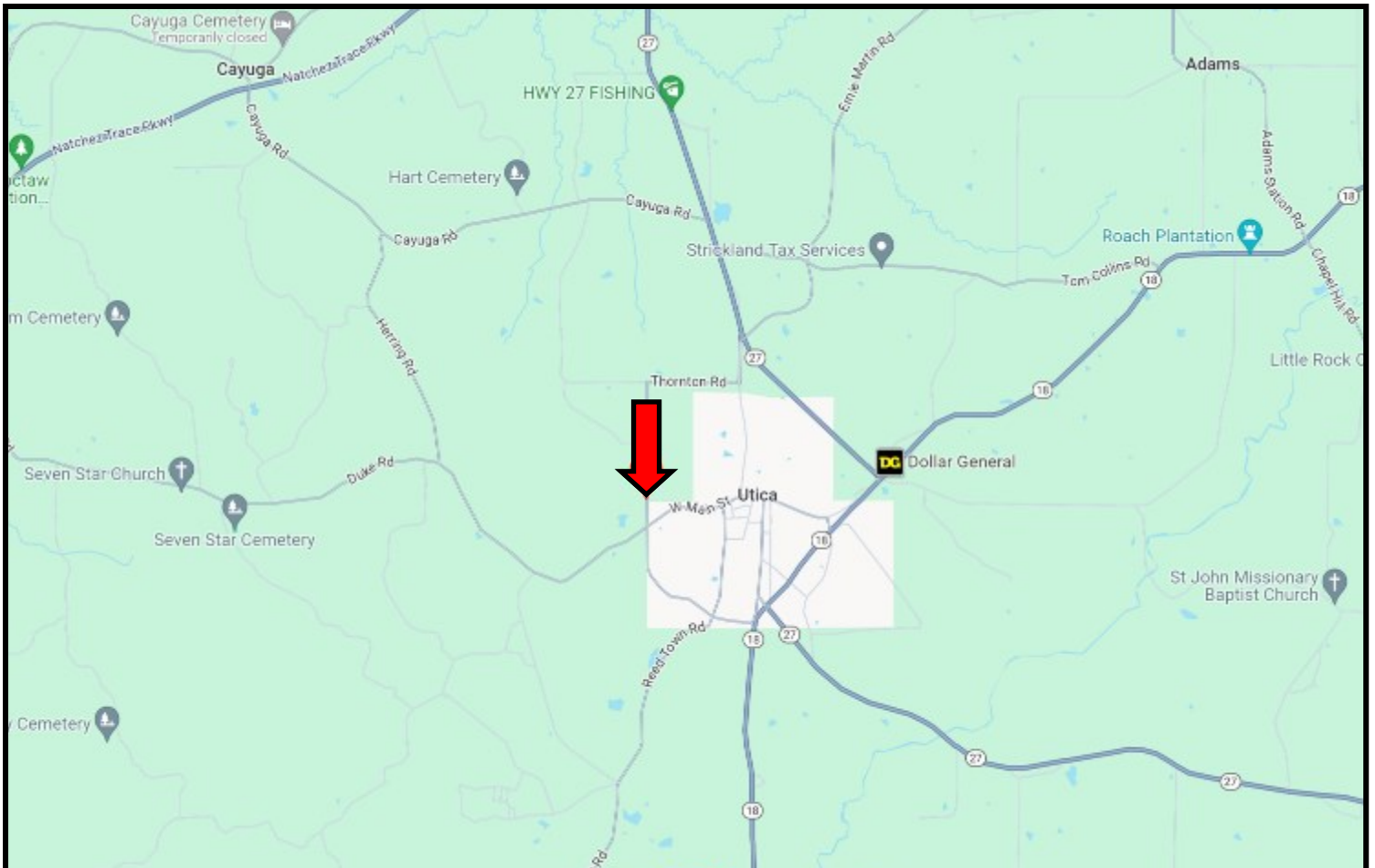
**A Real Estate Expert You Can Trust**

TomSmithLandandHomes.com

Information is believed to be accurate but not guaranteed.



# DIRECTIONAL MAP



**DIRECTIONS FROM HWY 18 AND HWY 27 IN UTICA, MS:** Travel Hwy 18 to Main Street. Travel Main Street for 1.8 miles. Turn right onto Utica Bypass Road and travel .2 miles. The property will be on your left. 1203 Utica Bypass Road Utica, MS 39175 [GOOGLE MAP LINK](#)



**CHAD  
WILSON**  
REALTOR®

Office: 601.898.2772  
Cell: 601.750.1970  
Chad@TomSmithLand.com



**A Real Estate Expert You Can Trust**

TomSmithLandandHomes.com

Information is believed to be accurate but not guaranteed.

