

# BEAUTIFUL REUNION HOME WITH LAKE VIEWS

126 Shoreline Drive Madison, MD 39110



- DREAM HOME IN REUNION WITH UNOBSTRUCTED VIEWS OF THE LAKE
- FENCED BACKYARD EXTENDS TO A COMMON AREA WITH BEAUTIFUL TREES
- HEATED GUNITE POOL WITH PROFESSIONAL LANDSCAPING
- SCREENED-IN PORCH WITH FIREPLACE AND OUTDOOR KITCHEN
- UNIQUE FRONT DOORS, RED OAK FLOORS, ARCHED WINDOWS AND DOORS
- OPEN FLOOR PLAN WITH CUSTOM CAST STONE FIREPLACE IN THE FAMILY ROOM
- RED OAK VAULTED CEILING IN FORMAL DINING ROOM
- LARGE KITCHEN WITH PLENTY OF CABINETS, GRANITE ISLAND, AND PANTRY
- WET BAR WITH GRANITE, ICE MAKER, AND WINE FRIDGE
- GRANITE BATHROOM COUNTERTOPS, DOUBLE TREY CEILING IN THE GUEST BEDROOM
- SPACIOUS PRIMARY SUITE WITH BUILT-INS, TRIPLE TREY CEILING, AND STEP-UP TUB
- OFFICE WITH BUILT-INS, VESSEL SINK IN THE HALF BATH
- UPSTAIRS BEDROOM AND BATH WITH A BALCONY FOR A VIEW
- SURROUND SOUND AND HIGH-END FINISHES THROUGHOUT



**ELLEN  
SMITH**

MANAGING BROKER

Office: 601.898.2772

Cell: 601.954.9395

Ellen@TomSmithHomes.com



## A Real Estate Expert You Can Trust

TomSmithLandandHomes.com

Information is believed to be accurate but not guaranteed.







Welcome to your dream home! This custom-built beautiful 3,560 sq., ft. home has three bedrooms and 3.5 baths and is located in the Reunion subdivision. It is ideally situated across from Reunion Lake, with an unobstructed view and a gunite pool in a fully fenced backyard. As you navigate through the eye-catching, iron-arched front doors, you'll be greeted by wood floors, arched windows, rounded corners, and arched insets in the walls to showcase your art. The home has an open floor plan with a gourmet kitchen that opens to the gorgeous formal dining room with a red oak vaulted ceiling and a large living room with a custom cast stone fireplace. The kitchen is a chef's dream with abundant cabinets, stained glass accents, pull-out spice cabinets, a spacious granite island, and

plenty of granite countertops. Other notable features include a pantry, double ovens, a wet bar with granite, an ice maker, and a wine fridge. Throughout the home, you'll find textured walls, thick molding, a built-in desk with a granite top, granite bathroom countertops, and a double-trey ceiling in the guest bedroom. The expansive primary suite offers a large closet with built-ins, a triple trey ceiling, a built-in chest, a cozy sitting area, leather mirrors in the master bath, a step-up master tub, and a fully tiled master shower. Additional amenities include a gunite pool, a screened-in porch with a cozy fireplace and grill, surround sound throughout the home, an office with generous built-ins (could be a bedroom), and a spacious laundry room. Remember to explore the upstairs bedroom and bath, complete with a balcony for a gorgeous view of Reunion Lake. The fenced backyard seamlessly extends into more common space, adorned with beautiful trees. This home has it all!

**ELLEN SMITH**

MANAGING BROKER

Office: 601.898.2772

Cell: 601.954.9395

Ellen@TomSmithHomes.com



**A Real Estate Expert You Can Trust**

TomSmithLandandHomes.com

Information is believed to be accurate but not guaranteed.







**ELLEN SMITH**

MANAGING BROKER

Office: 601.898.2772

Cell: 601.954.9395

Ellen@TomSmithHomes.com



**A Real Estate Expert You Can Trust**

TomSmithLandandHomes.com

Information is believed to be accurate but not guaranteed.







**ELLEN SMITH**

MANAGING BROKER

Office: 601.898.2772

Cell: 601.954.9395

Ellen@TomSmithHomes.com



**A Real Estate Expert You Can Trust**

TomSmithLandandHomes.com

Information is believed to be accurate but not guaranteed.







**ELLEN SMITH**

MANAGING BROKER

Office: 601.898.2772

Cell: 601.954.9395

Ellen@TomSmithHomes.com



**A Real Estate Expert You Can Trust**

TomSmithLandandHomes.com

Information is believed to be accurate but not guaranteed.







**ELLEN SMITH**

MANAGING BROKER

Office: 601.898.2772

Cell: 601.954.9395

Ellen@TomSmithHomes.com



**A Real Estate Expert You Can Trust**

TomSmithLandandHomes.com

Information is believed to be accurate but not guaranteed.







**ELLEN SMITH**

MANAGING BROKER

Office: 601.898.2772

Cell: 601.954.9395

Ellen@TomSmithHomes.com



**A Real Estate Expert You Can Trust**

TomSmithLandandHomes.com

Information is believed to be accurate but not guaranteed.







**ELLEN SMITH**

MANAGING BROKER

Office: 601.898.2772

Cell: 601.954.9395

Ellen@TomSmithHomes.com



**A Real Estate Expert You Can Trust**

TomSmithLandandHomes.com

Information is believed to be accurate but not guaranteed.







**ELLEN SMITH**

MANAGING BROKER

Office: 601.898.2772

Cell: 601.954.9395

Ellen@TomSmithHomes.com



**A Real Estate Expert You Can Trust**

TomSmithLandandHomes.com

Information is believed to be accurate but not guaranteed.







**ELLEN SMITH**

MANAGING BROKER

Office: 601.898.2772

Cell: 601.954.9395

Ellen@TomSmithHomes.com



**A Real Estate Expert You Can Trust**

TomSmithLandandHomes.com

Information is believed to be accurate but not guaranteed.







**ELLEN SMITH**

MANAGING BROKER

Office: 601.898.2772

Cell: 601.954.9395

Ellen@TomSmithHomes.com



**A Real Estate Expert You Can Trust**

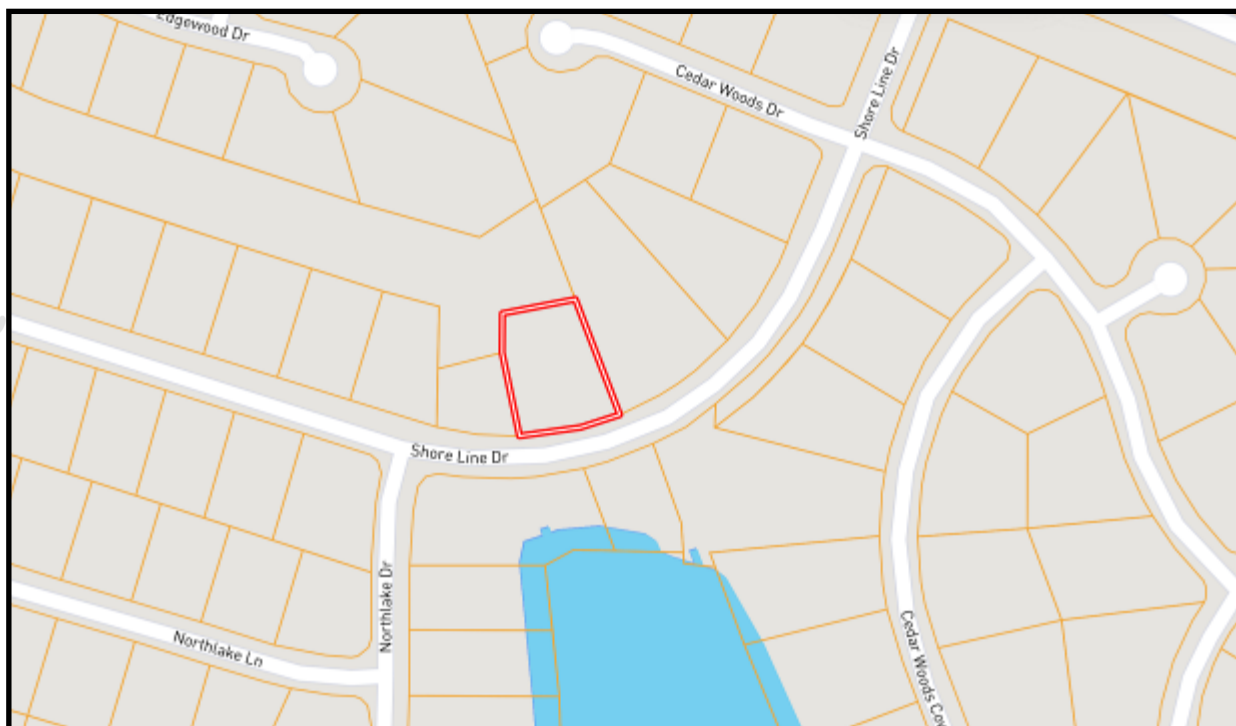
TomSmithLandandHomes.com

Information is believed to be accurate but not guaranteed.





## Ownership Map



## Aerial Map



[Click Here for an  
Interactive Map](#)

**ELLEN SMITH**

MANAGING BROKER

Office: 601.898.2772

Cell: 601.954.9395

[Ellen@TomSmithHomes.com](mailto:Ellen@TomSmithHomes.com)



**A Real Estate Expert You Can Trust**

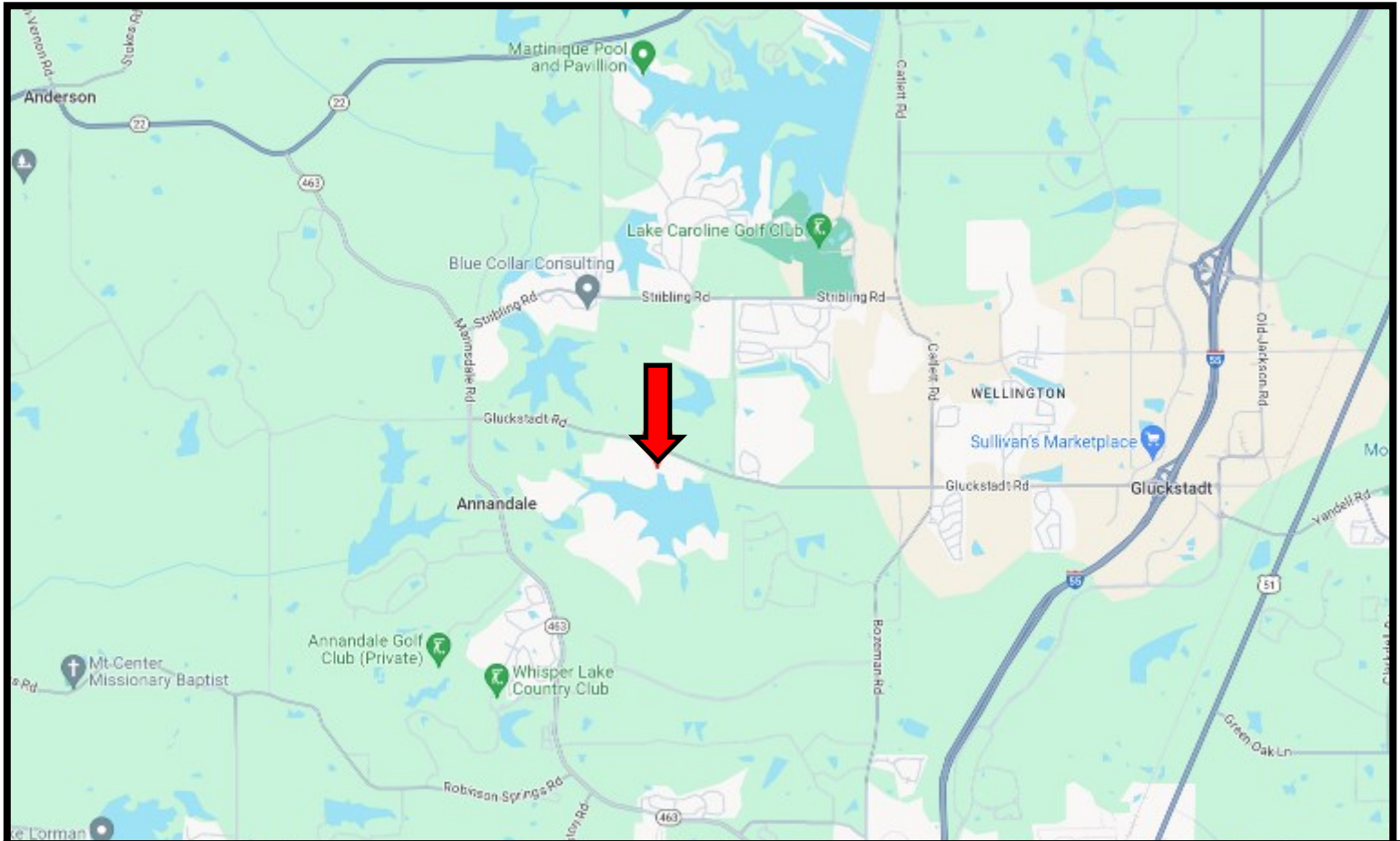
[TomSmithLandandHomes.com](http://TomSmithLandandHomes.com)

Information is believed to be accurate but not guaranteed.





# Directional Map



**DIRECTIONS FROM I-55N AND GLUCKSTADT ROAD IN GLUCKSTADT, MS:** Take exit 112 toward Gluckstadt. Turn onto Gluckstadt Road and travel 3.9 miles. Turn left onto Shore Line Drive. Go through the Gate and after .2 miles, the home will be on your right. [GOOGLE MAP LINK](#)

**126 Shore Line Drive Madison, MS 39110**



**ELLEN  
SMITH**

MANAGING BROKER

Office: 601.898.2772

Cell: 601.954.9395

Ellen@TomSmithHomes.com



**A Real Estate Expert You Can Trust**

TomSmithLandandHomes.com

Information is believed to be accurate but not guaranteed.

