

310 ROBY STREET, CLEVELAND, MS 38732

\$85,500



Discover charm and comfort in this two-bedroom, one-bathroom home with high ceilings that exude character. Sunlight streams through numerous windows, creating a bright and inviting atmosphere. The partially fenced backyard is an excellent space for your pet's enjoyment. Whether you're looking for your next home or a valuable addition to your rental portfolio in Bolivar County, this house is a great choice. Contact Tracey Bell to arrange your private showing today!



**TRACEY
BELL**

MANAGING BROKER

Office: 662.441.2500

Cell: 662.719.4720

Tracey@TomSmithLand.com



A Real Estate Expert You Can Trust

TomSmithLandandHomes.com

Information is believed to be accurate but not guaranteed.





2 Bedroom

1 Bathroom

992± SF

Large Windows

Fenced Backyard

High Ceilings

**TRACEY
BELL**

MANAGING BROKER

Office: 662.441.2500

Cell: 662.719.4720

Tracey@TomSmithLand.com



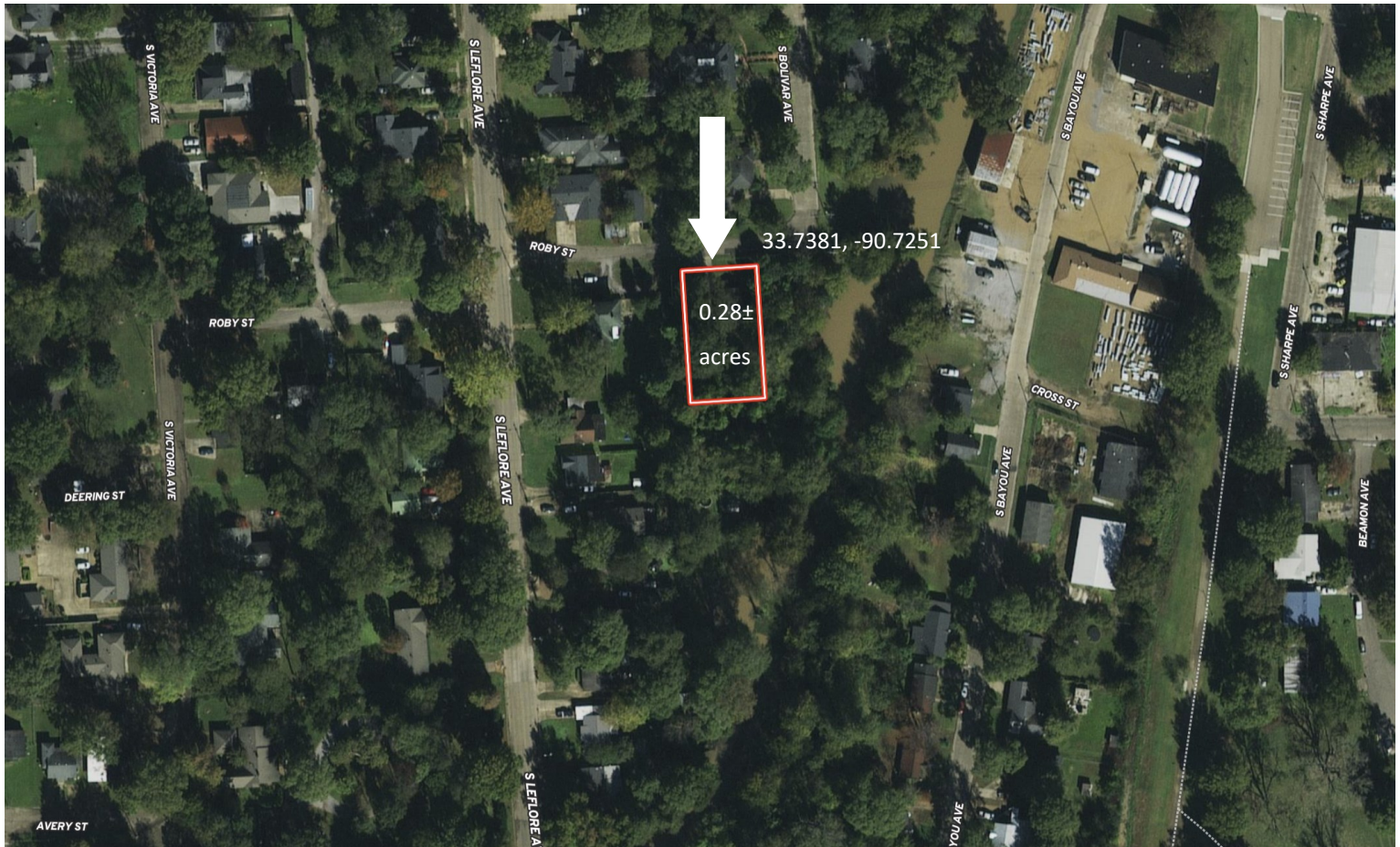
A Real Estate Expert You Can Trust

TomSmithLandandHomes.com

Information is believed to be accurate but not guaranteed.



AERIAL MAP



[Click for Interactive Map](#)

TRACEY
BELL

MANAGING BROKER

Office: 662.441.2500

Cell: 662.719.4720

Tracey@TomSmithLand.com

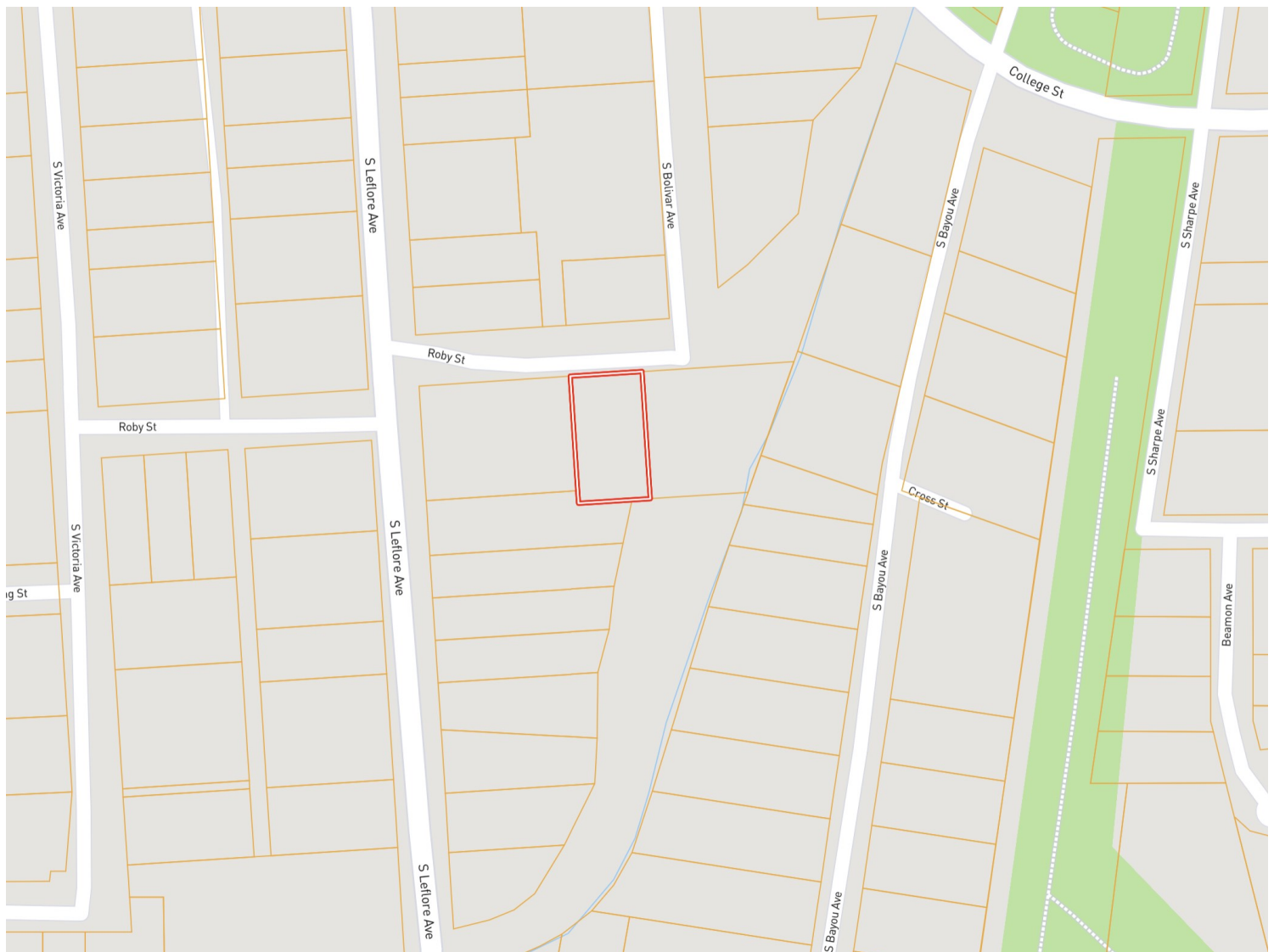


A Real Estate Expert You Can Trust
TomSmithLandandHomes.com

Information is believed to be accurate but not guaranteed.



OWNERSHIP MAP



**TRACEY
BELL**

MANAGING BROKER

Office: 662.441.2500

Cell: 662.719.4720

Tracey@TomSmithLand.com

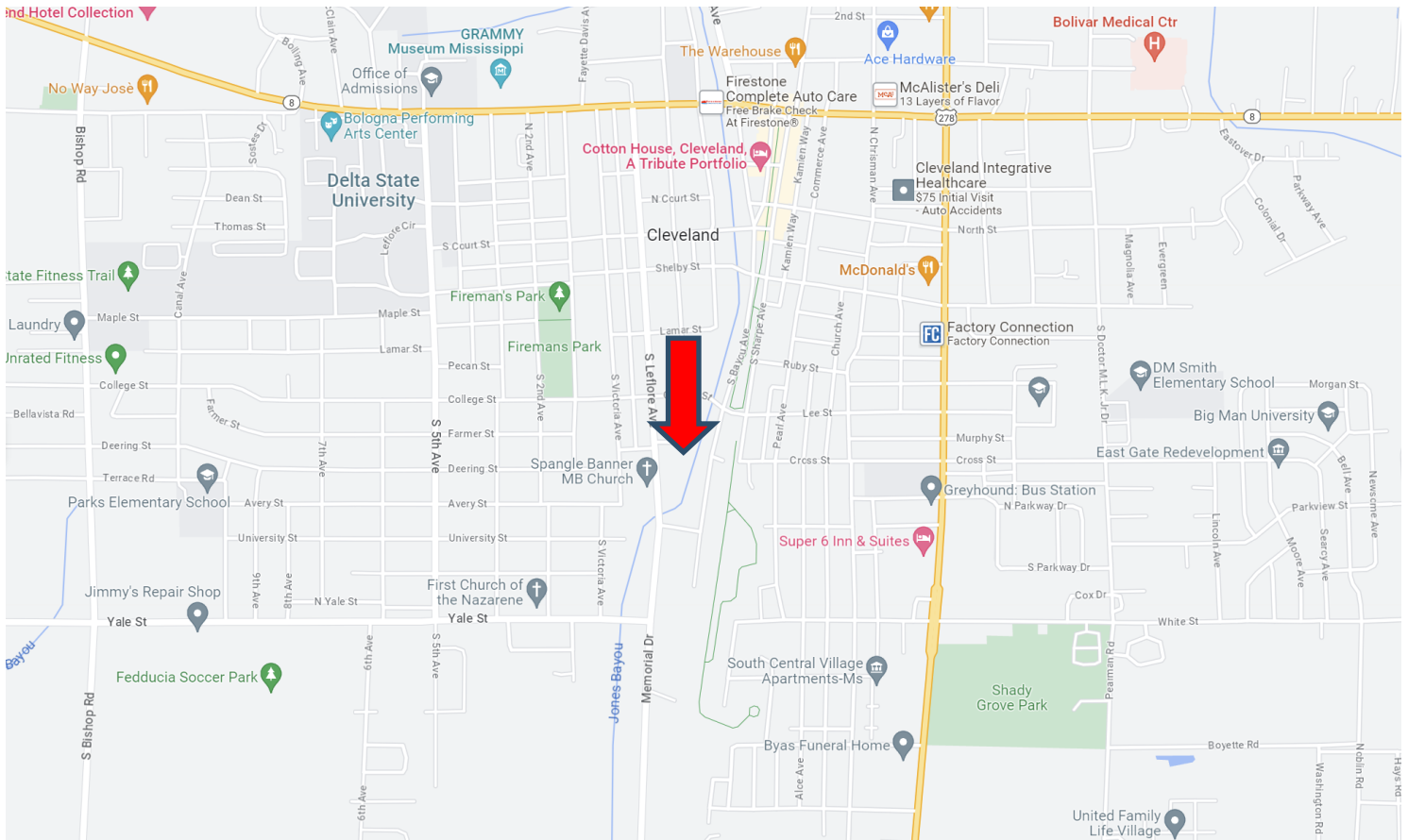


A Real Estate Expert You Can Trust
TomSmithLandandHomes.com

Information is believed to be accurate but not guaranteed.



DIRECTIONAL MAP



Address: 310 ROBY STREET, CLEVELAND, MS 38732

Directions from Hwy 8 and Hwy 61 Cleveland, MS: Travel west on E. Sunflower Road for 0.6 miles. Turn left onto N Leflore Avenue and travel 0.7 miles. Turn left onto Roby Street. After 272 feet, the home will be on the right. [Click for Google Maps.](#)



**TRACEY
BELL**

MANAGING BROKER

Office: 662.441.2500

Cell: 662.719.4720

Tracey@TomSmithLand.com



A Real Estate Expert You Can Trust

TomSmithLandandHomes.com

Information is believed to be accurate but not guaranteed.

