

# Country Home on 7± Acres

## Tallahatchie County, MS



**6283 Teasdale Rd. Charleston, MS 38921**

**\$169,000**

Are you searching for a charming country home with acreage for your family? Take a look at this lovely Tallahatchie County brick home featuring three bedrooms, two bathrooms, and an additional bonus room that could easily serve as a fourth bedroom. The house features 1,563 sqft of living space and is on 7± acres of picturesque land, providing a peaceful setting where deer sightings are a common occurrence right outside your back window. The property includes a spacious backyard with a generous shed equipped with water and utilities, perfect for repurposing as a horse stable. Previously utilized for horses, the back 4-5 acres of the land hold great potential with a touch of tender loving care, offering an opportunity to revive its equestrian charm. The primary bedroom has a spacious master bath and a sizable walk-in closet. The inviting front porch is ideal for hosting cookouts and creating cherished moments with friends and family from the comfort of your rocking chair. Take the next step in making this country home your own by contacting Anthony today for a private showing!

**Directions from Charleston, MS: Travel East on Main St. for approximately 0.1 miles. Turn left onto Martin Luther King Drive, then in 0.5 miles continue onto Teasdale Rd. After 5.3 miles, the house will be on the left. [Click for Google Maps.](#)**



**ANTHONY  
STEEN**

REALTOR®

Office: 662.441.2500

Cell: 662.645.5151

Anthony@TomSmithLand.com



**A Real Estate Expert You Can Trust**

TomSmithLandandHomes.com

Information is believed to be accurate but not guaranteed.





**ANTHONY STEEN**

REALTOR®

Office: 662.441.2500

Cell: 662.645.5151

Anthony@TomSmithLand.com



**A Real Estate Expert You Can Trust**

TomSmithLandandHomes.com

Information is believed to be accurate but not guaranteed.





**ANTHONY STEEN**

REALTOR®

Office: 662.441.2500

Cell: 662.645.5151

Anthony@TomSmithLand.com



**A Real Estate Expert You Can Trust**

TomSmithLandandHomes.com

Information is believed to be accurate but not guaranteed.





# ANTHONY STEEN

REALTOR®

Office: 662.441.2500

Cell: 662.645.5151

Anthony@TomSmithLand.com



A Real Estate Expert You Can Trust

TomSmithLandandHomes.com

Information is believed to be accurate but not guaranteed.



# AERIAL MAP



[Click for Interactive Map](#)

**ANTHONY STEEN**  
REALTOR®

Office: 662.441.2500

Cell: 662.645.5151

Anthony@TomSmithLand.com



**A Real Estate Expert You Can Trust**  
TomSmithLandandHomes.com

Information is believed to be accurate but not guaranteed.



# OWNERSHIP MAP



**ANTHONY STEEN**

REALTOR®

Office: 662.441.2500

Cell: 662.645.5151

[Anthony@TomSmithLand.com](mailto:Anthony@TomSmithLand.com)



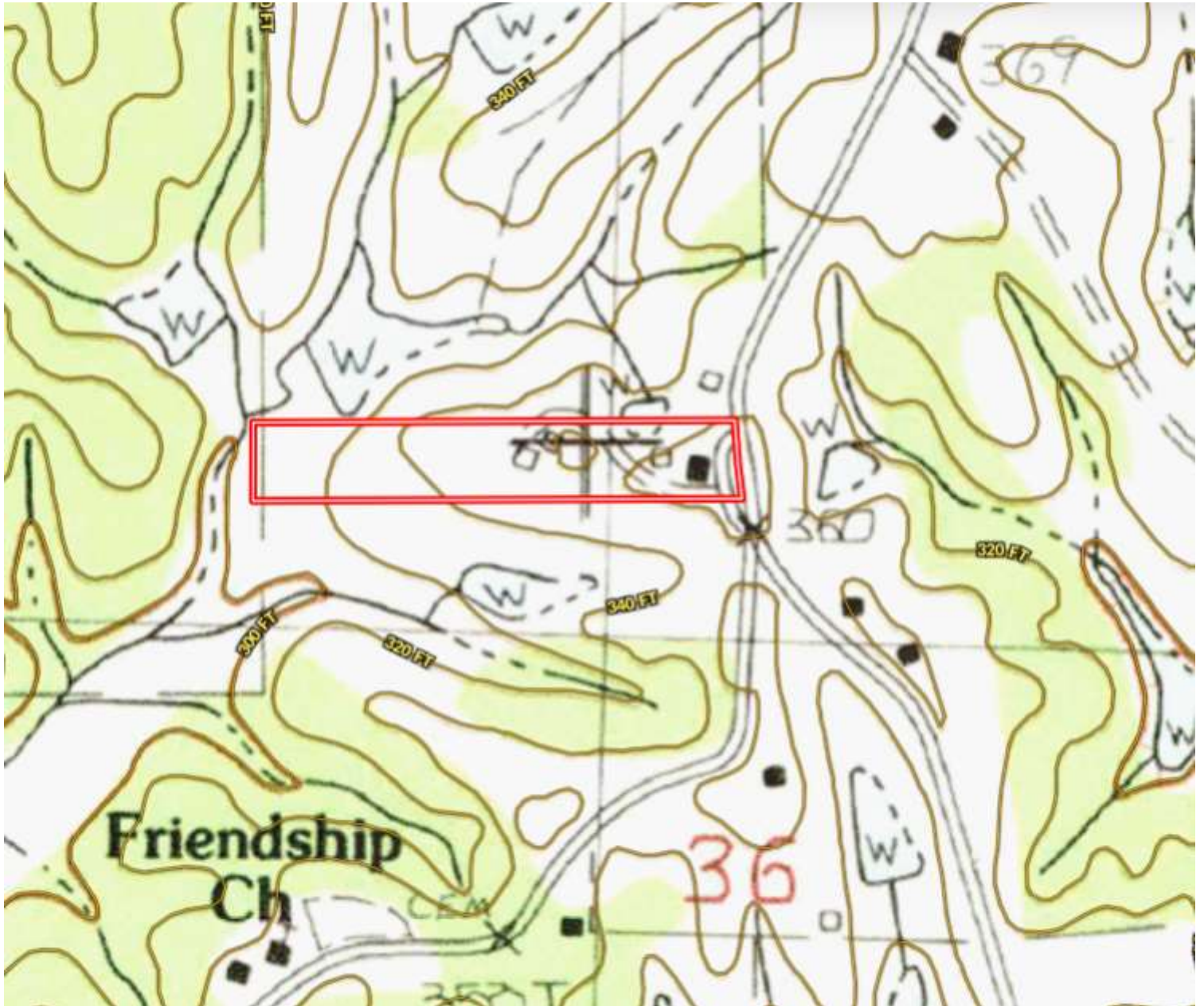
**A Real Estate Expert You Can Trust**

[TomSmithLandandHomes.com](http://TomSmithLandandHomes.com)

Information is believed to be accurate but not guaranteed.



# TOPO MAP



**ANTHONY STEEN**  
REALTOR®

Office: 662.441.2500

Cell: 662.645.5151

Anthony@TomSmithLand.com

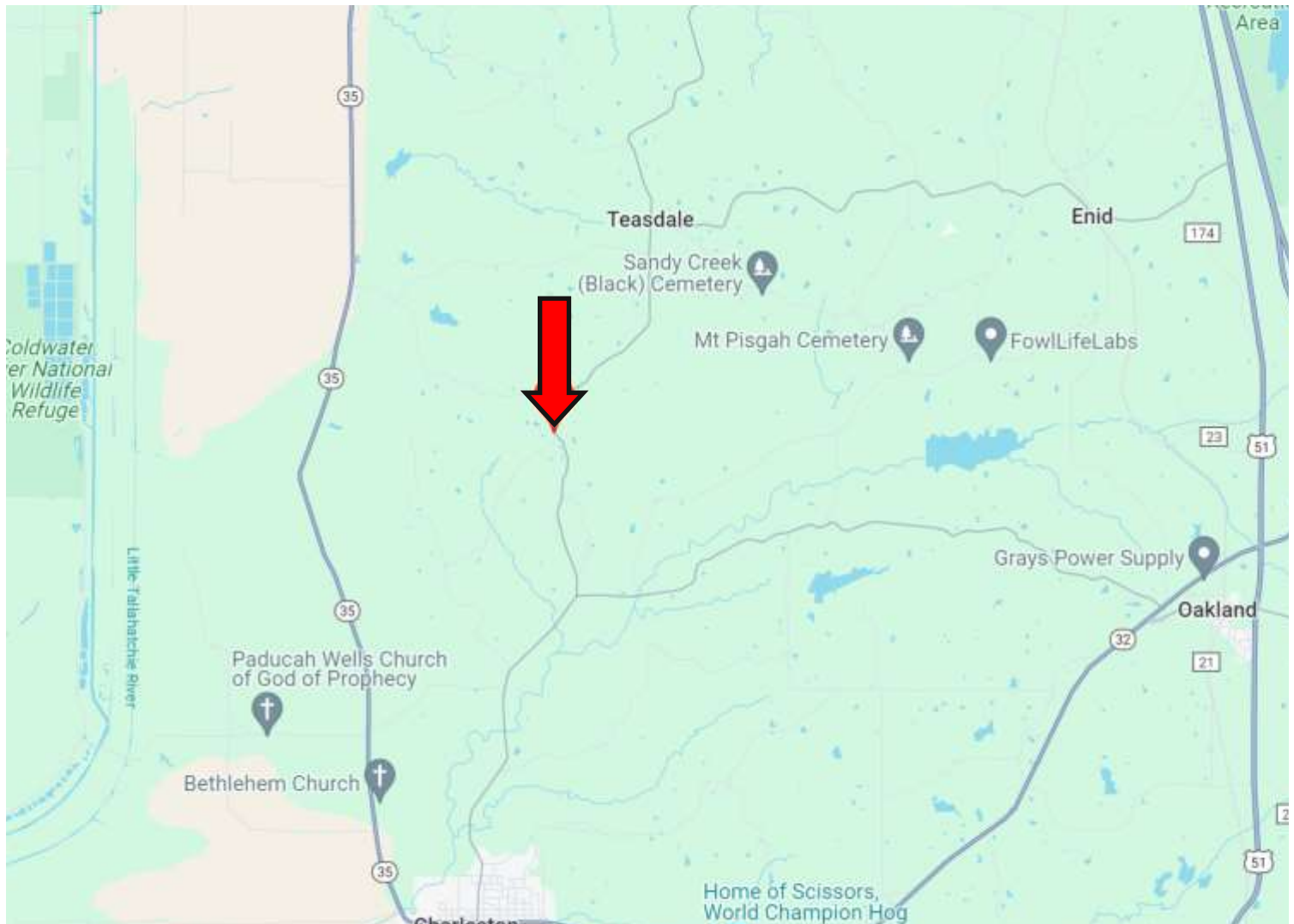


**A Real Estate Expert You Can Trust**  
TomSmithLandandHomes.com

Information is believed to be accurate but not guaranteed.

2011-2023  
**BEST**  
BROKERAGE

# DIRECTIONAL MAP



**Address: 6283 Teasdale Rd. Charleston, MS 38921**

**Directions from Charleston, MS: Travel East on Main St. for approximately 0.1 miles. Turn left onto Martin Luther King Drive, then in 0.5 miles continue onto Teasdale Rd. After 5.3 miles, the house will be on the left. [Click for Google Maps.](#)**



**ANTHONY  
STEEN**

REALTOR®

Office: 662.441.2500

Cell: 662.645.5151

Anthony@TomSmithLand.com



**A Real Estate Expert You Can Trust**

TomSmithLandandHomes.com

Information is believed to be accurate but not guaranteed.

