

822 OAKHURST AVENUE, CLARKSDALE, MS 38614

4 Bedrooms | 3 Bathrooms | 2,604± SF

\$99,950



This four-bedroom, three-bathroom home in Coahoma County, MS, is full of character. The arched-cased openings in the formal dining and living rooms add to the charm. The property is within a mile from the county public school, Clarksdale High, and the county private school, Lee Academy. It could be a great starter home or investment property. Call Anthony Steen to schedule your private showing!



**ANTHONY
STEEN**

REALTOR®

Office: 662.441.2500

Cell: 662.645.5151

Anthony@TomSmithLand.com



A Real Estate Expert You Can Trust

TomSmithLandandHomes.com

Information is believed to be accurate but not guaranteed.





- 4 Bedrooms
- 2 Fireplaces
- 3 Bathrooms
- Carport
- 2,604± SF
- Arched Cased Opening
- 1.13± Acre Lot
- Formal Dining Room
- 2 Dens



ANTHONY STEEN

REALTOR®

Office: 662.441.2500

Cell: 662.645.5151

Anthony@TomSmithLand.com

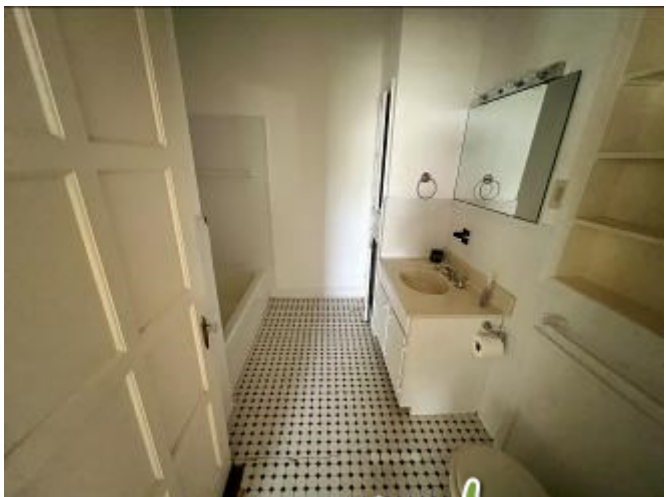


A Real Estate Expert You Can Trust

TomSmithLandandHomes.com

Information is believed to be accurate but not guaranteed.





ANTHONY STEEN

REALTOR®

Office: 662.441.2500

Cell: 662.645.5151

Anthony@TomSmithLand.com



A Real Estate Expert You Can Trust

TomSmithLandandHomes.com

Information is believed to be accurate but not guaranteed.



AERIAL MAP



[Click for Interactive Map](#)

ANTHONY STEEN

REALTOR®

Office: 662.441.2500

Cell: 662.645.5151

Anthony@TomSmithLand.com



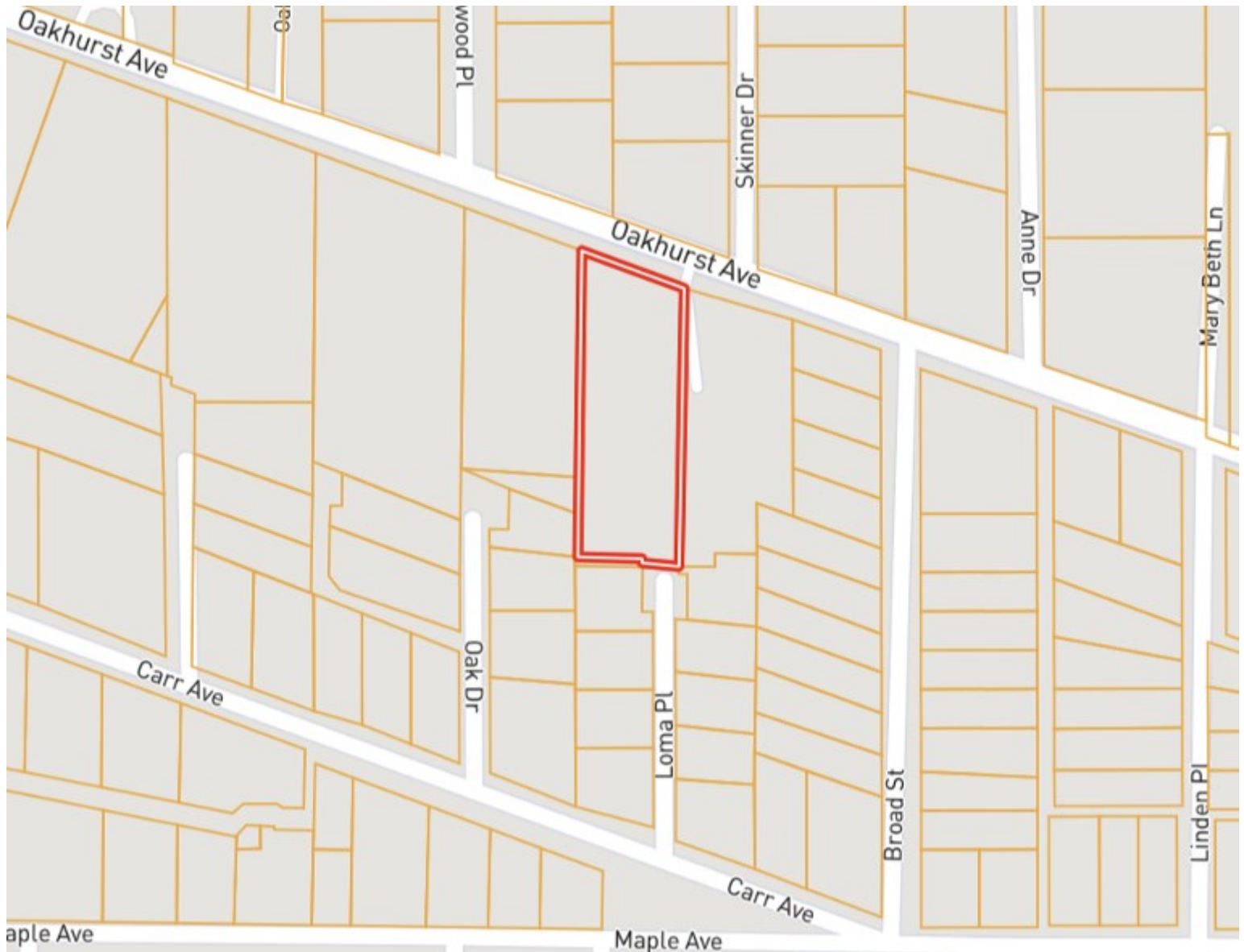
A Real Estate Expert You Can Trust

TomSmithLandandHomes.com

Information is believed to be accurate but not guaranteed.



OWNERSHIP MAP



ANTHONY STEEN

REALTOR®

Office: 662.441.2500

Cell: 662.645.5151

Anthony@TomSmithLand.com



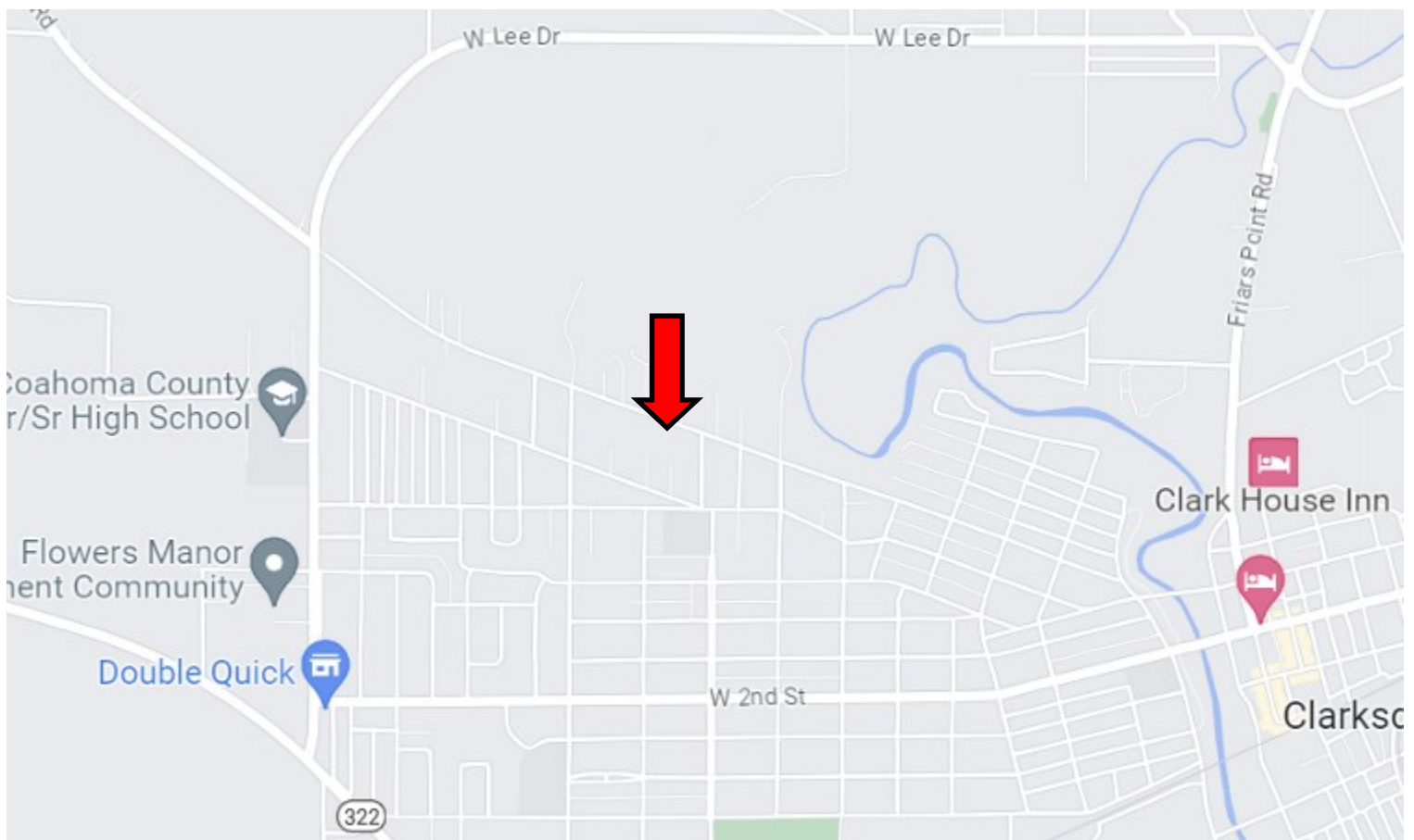
A Real Estate Expert You Can Trust

TomSmithLandandHomes.com

Information is believed to be accurate but not guaranteed.



DIRECTIONAL MAP



Address: 822 Oakhurst Avenue, Clarksdale, MS 38614

Directions from Hwy 61 and Hwy 49 in Clarksdale, MS: Head southwest on US-278 for 1.9 miles, then exit onto New Africa Road. Travel 2 miles, then turn left onto Oakhurst Avenue. After 0.9 miles, the home will be on the left. [Click for Google Maps.](#)



**ANTHONY
STEEN**

REALTOR®

Office: 662.441.2500

Cell: 662.645.5151

Anthony@TomSmithLand.com



A Real Estate Expert You Can Trust

TomSmithLandandHomes.com

Information is believed to be accurate but not guaranteed.

