

Charming Home in Durant, MS Holmes County



- **Hardwood Floors**
- **Storage Shed**
- **Garden Area**
- **Attached Two-Car Garage**

\$159,000



Directions from the intersection on Hwy 51 and Mulberry St. in Durant MS: Travel west on Mulberry St. for .2 miles. Proceed through intersection onto Castalian Springs Rd. After .2 miles, the property will be on your right. 9351 Castalian Springs Rd. Durant, MS 39063 GPS: 33.0769, -89.8621



**SAM
SAMPLE**
REALTOR®

Office: 601.898.2772

Cell: 601.668.5697

Sam@TomSmithLand.com



A Real Estate Expert You Can Trust

TomSmithLandandHomes.com

Information is believed to be accurate but not guaranteed.



935 I Castalian St. Durant, MS 39063

This Holmes County home in Durant, MS, is on a spacious lot with abundant trees for shade. The concrete apron at the street facilitates a smooth transition from the city street to the gravel driveway. The rear of the home features a large two-car garage with two entrances from this covered area, one into the family room with a security door and another entrance into the utility room. The home has exposed hardwood floors, excluding the bath and kitchen areas. The kitchen is inviting and functional, with a well-organized layout and an adjacent dining area. The generously sized living room is versatile and can double as a formal dining area. Upon entering through the front foyer, residents and guests can access either the living room or the hallway leading to three bedrooms, each with double closets. Two complete baths, one with a tub and the other with a shower accommodate the needs of today's busy families. The home has central air, heat, and gas logs, ensuring year-round comfort. For added convenience, a washer and dryer are included. Outside, a practical storage shed with a covered porch complements the property. Blueberry bushes and a garden area enhance the appeal of the surroundings. This property offers a balanced mix of functionality and charm. Call Sam Sample to schedule your private showing!

SAM SAMPLE

REALTOR®

Office: 601.898.2772

Cell: 601.668.5697

Sam@TomSmithLand.com



A Real Estate Expert You Can Trust

TomSmithLandandHomes.com

Information is believed to be accurate but not guaranteed.





SAM SAMPLE

REALTOR®

Office: 601.898.2772

Cell: 601.668.5697

Sam@TomSmithLand.com

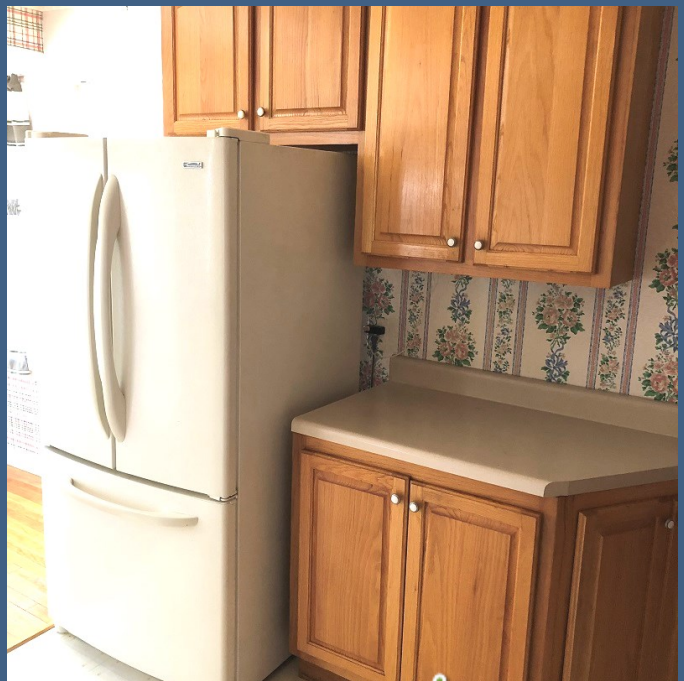


A Real Estate Expert You Can Trust

TomSmithLandandHomes.com

Information is believed to be accurate but not guaranteed.





SAM SAMPLE

REALTOR®

Office: 601.898.2772

Cell: 601.668.5697

Sam@TomSmithLand.com



A Real Estate Expert You Can Trust

TomSmithLandandHomes.com

Information is believed to be accurate but not guaranteed.





SAM SAMPLE

REALTOR®

Office: 601.898.2772

Cell: 601.668.5697

Sam@TomSmithLand.com



A Real Estate Expert You Can Trust

TomSmithLandandHomes.com

Information is believed to be accurate but not guaranteed.





SAM SAMPLE

REALTOR®

Office: 601.898.2772

Cell: 601.668.5697

Sam@TomSmithLand.com

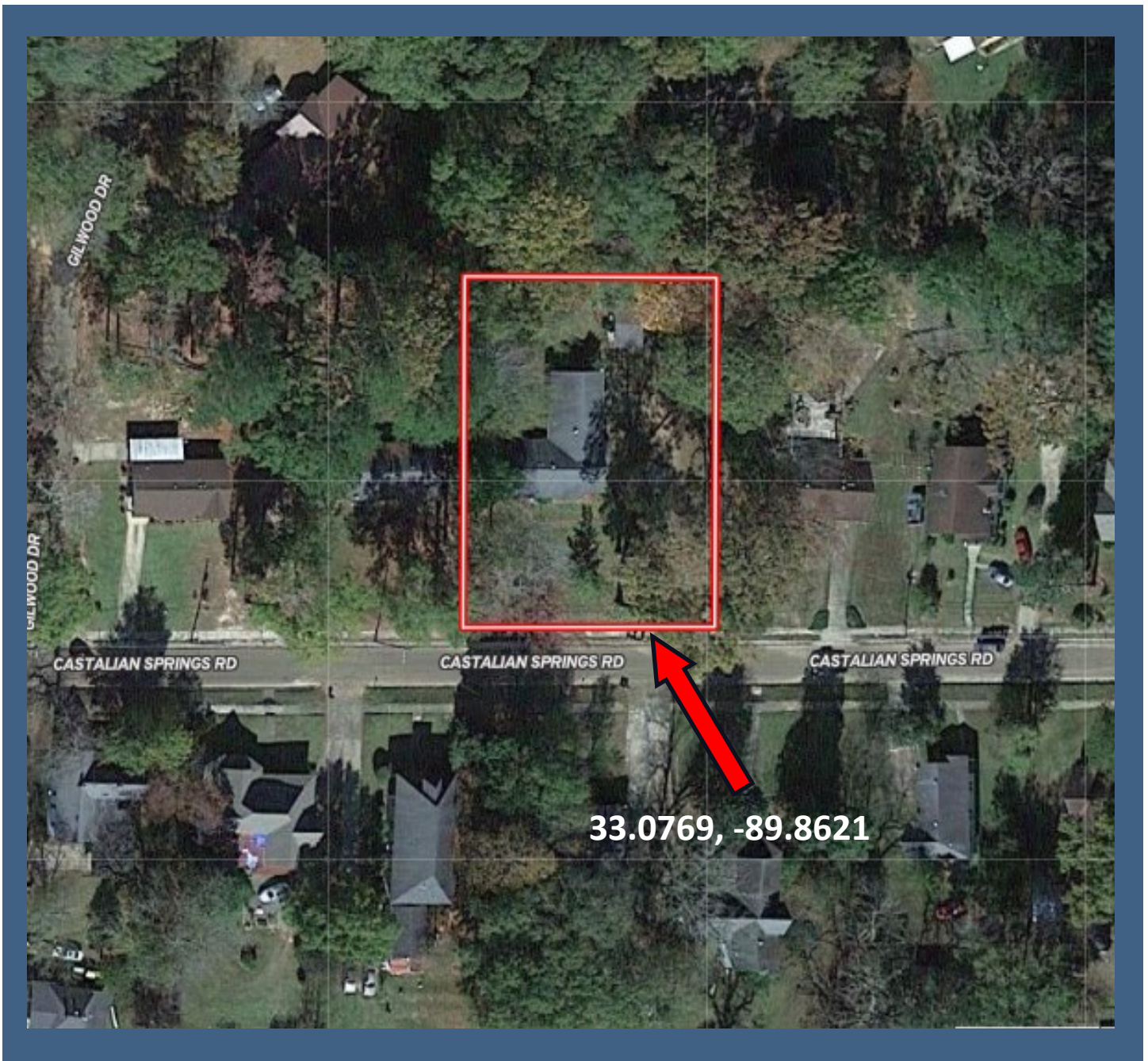


A Real Estate Expert You Can Trust

TomSmithLandandHomes.com

Information is believed to be accurate but not guaranteed.





AERIAL MAP

[CLICK HERE FOR AN INTERACTIVE MAP](#)

SAM SAMPLE

REALTOR®

Office: 601.898.2772

Cell: 601.668.5697

Sam@TomSmithLand.com

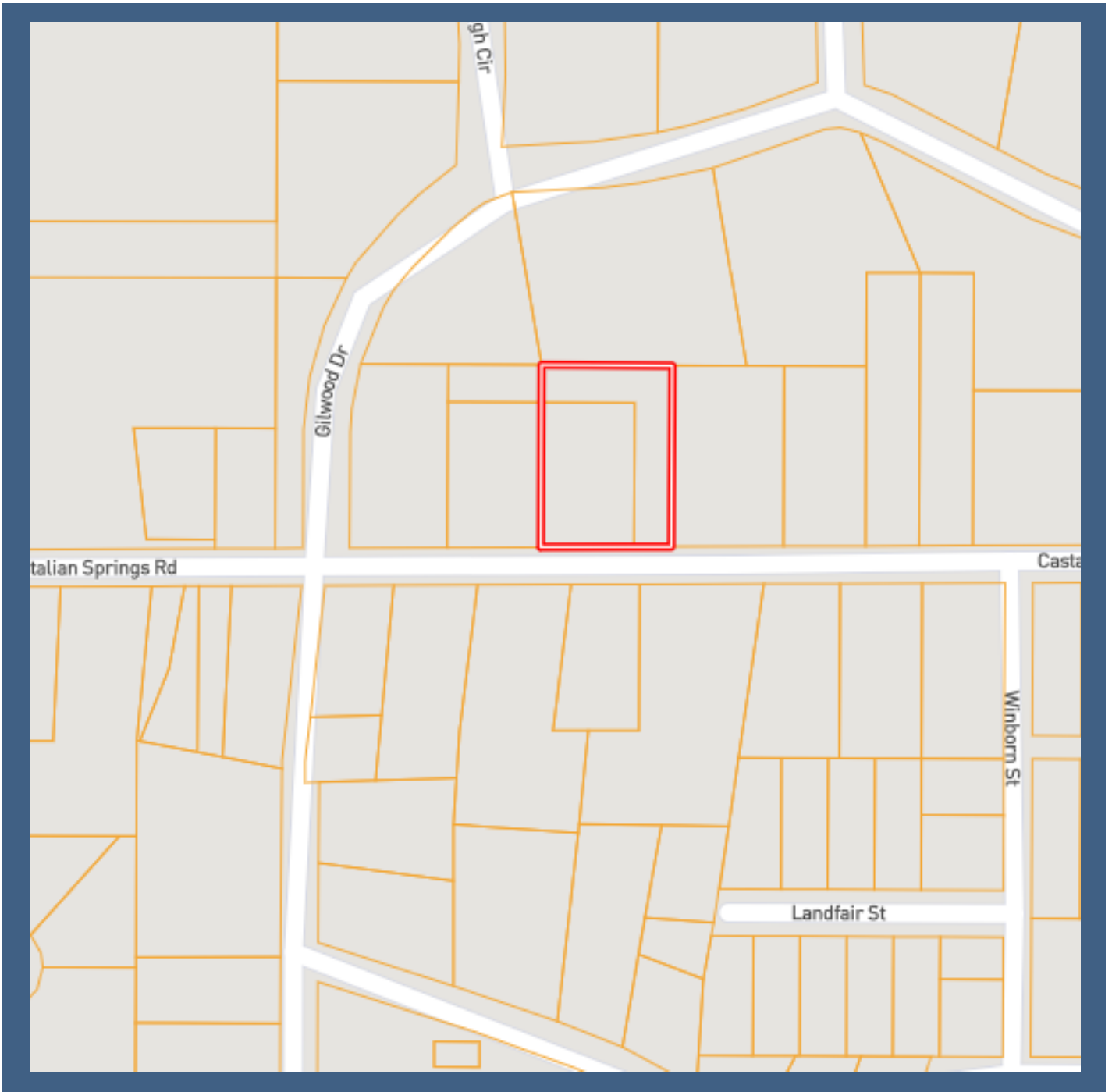


A Real Estate Expert You Can Trust

TomSmithLandandHomes.com

Information is believed to be accurate but not guaranteed.





OWNERSHIP MAP

SAM SAMPLE

REALTOR®

Office: 601.898.2772

Cell: 601.668.5697

Sam@TomSmithLand.com



A Real Estate Expert You Can Trust

TomSmithLandandHomes.com

Information is believed to be accurate but not guaranteed.





DIRECTIONAL MAP



Directions from the intersection on Hwy 51 and Mulberry St. in Durant MS: Travel west on Mulberry St. for .2 miles. Proceed through intersection onto Castalian Springs Rd. After .2 miles, the property will be on your right. 9351 Castalian Springs Rd. Durant, MS 39063. GPS 33.0769, -89.8621



**SAM
SAMPLE**
REALTOR®

Office: 601.898.2772
Cell: 601.668.5697
Sam@TomSmithLand.com



A Real Estate Expert You Can Trust

TomSmithLandandHomes.com

Information is believed to be accurate but not guaranteed.

