

# Three Bedroom/Two Bath Home on a .14± Acre Lot in Lincoln County, MS



**\$180,000**

This new 2023 Hamilton Homes double-wide home in Lincoln County, MS, could be exactly what you've been searching for! The residence features 1,680 square feet and is located on .14 acres, only minutes from downtown Brookhaven, MS. The thoughtfully designed open floorplan creates a spacious atmosphere, perfect for families to gather without feeling cramped. Enjoy privacy with the primary bedroom strategically placed opposite bedrooms two and three. Indulge in the comfort of the large primary bathroom, featuring a relaxing soaker tub, a convenient shower, and a spacious walk-in closet. The open-concept kitchen, complete with an island, simplifies meal preparation with plenty of space for cooking. The laundry room is strategically placed just off the kitchen, serving as a practical mud room for added convenience. Don't let this property slip by! Call Cliff to schedule your private showing today!

639 South Washington Street Brookhaven, MS 39601



**CLIF  
CANNON**  
REALTOR®

Office: 601.990.5070  
Cell: 601.565.1070  
Clif@TomSmithLand.com



**A Real Estate Expert You Can Trust**

TomSmithLandandHomes.com

Information is believed to be accurate but not guaranteed.





**CLIF CANNON**  
 REALTOR  
 Office: 601.990.5070  
 Cell: 601.565.1070  
 Cliff@TomSmithLand.com

**Tom Smith**  
**LAND AND**  
**HOMES**  
 Expect More. Get More.

**A Real Estate Expert You Can Trust**  
 TomSmithLandandHomes.com

Information is believed to be accurate but not guaranteed.





**CLIF CANNON**  
REALTOR®  
Office: 601.990.5070  
Cell: 601.565.1070  
Clif@TomSmithLand.com



**A Real Estate Expert You Can Trust**  
TomSmithLandandHomes.com

Information is believed to be accurate but not guaranteed.



# Aerial Map



[Click Here for an Interactive Map](#)

**CLIF CANNON**

REALTOR®

Office: 601.990.5070

Cell: 601.565.1070

Clif@TomSmithLand.com



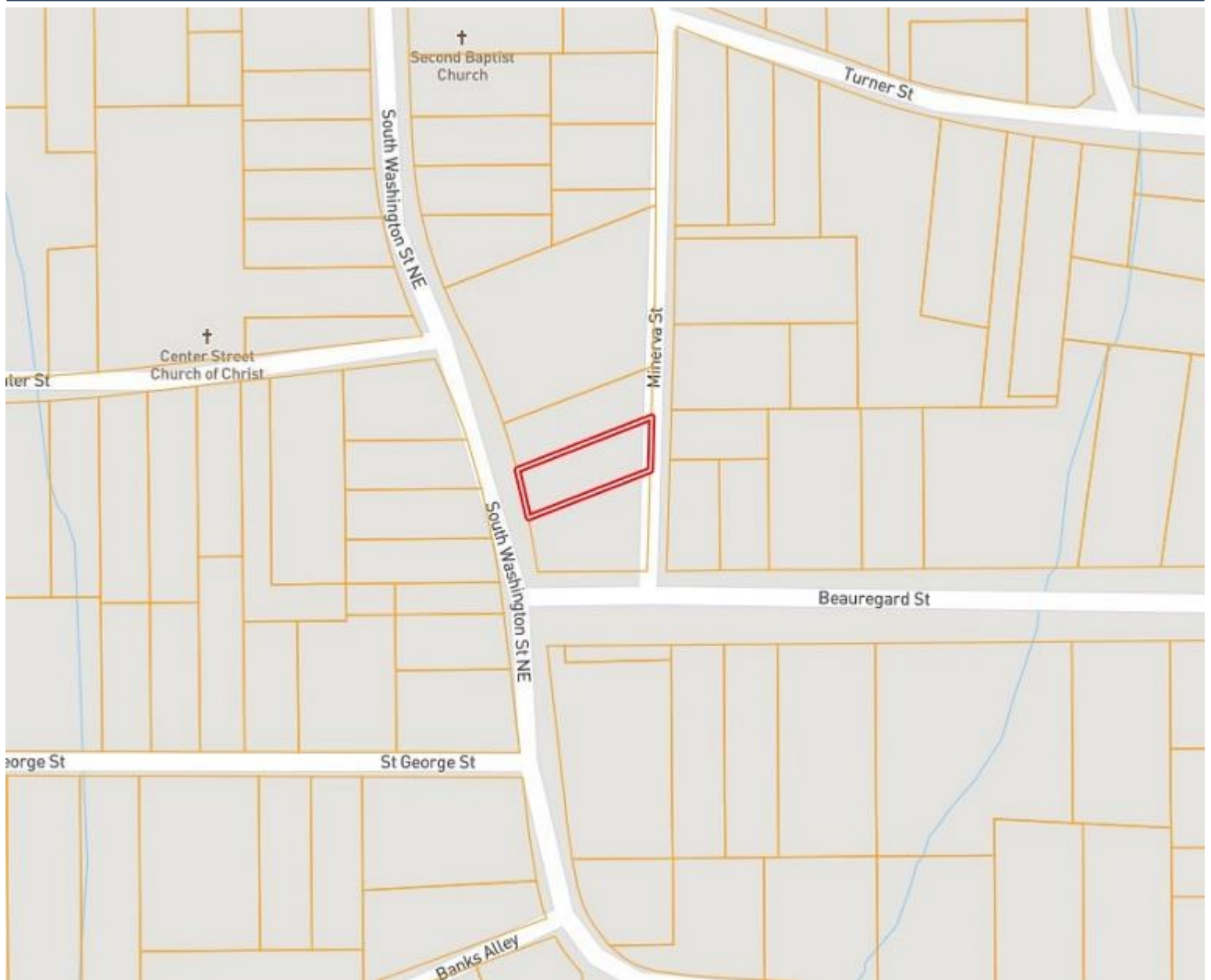
**A Real Estate Expert You Can Trust**

TomSmithLandandHomes.com

Information is believed to be accurate but not guaranteed.



# Ownership Map



**CLIF CANNON**

REALTOR®

Office: 601.990.5070

Cell: 601.565.1070

Clif@TomSmithLand.com



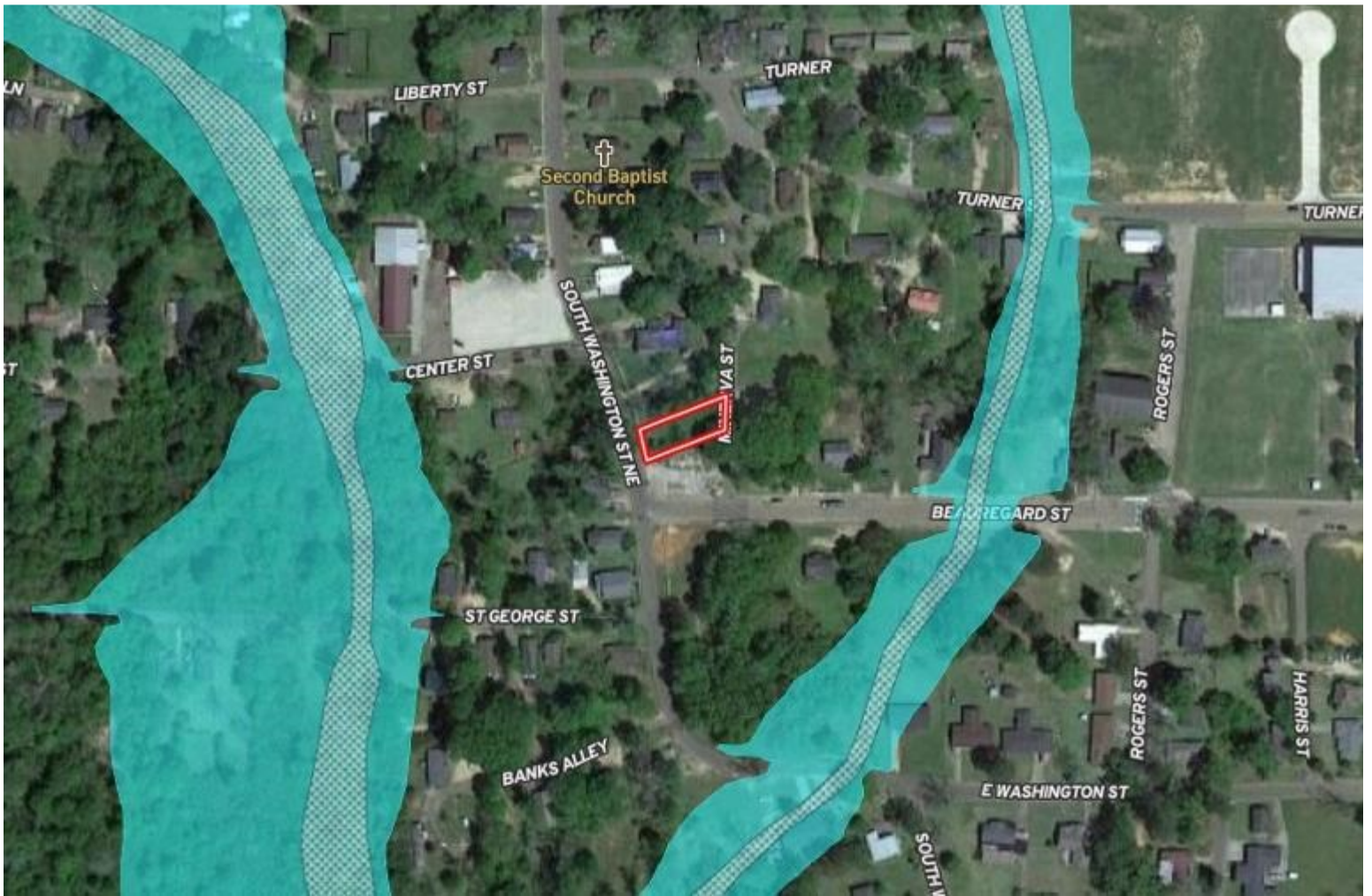
**A Real Estate Expert You Can Trust**

TomSmithLandandHomes.com

Information is believed to be accurate but not guaranteed.



# Flood Map



**CLIF CANNON**

REALTOR®

Office: 601.990.5070

Cell: 601.565.1070

Clif@TomSmithLand.com



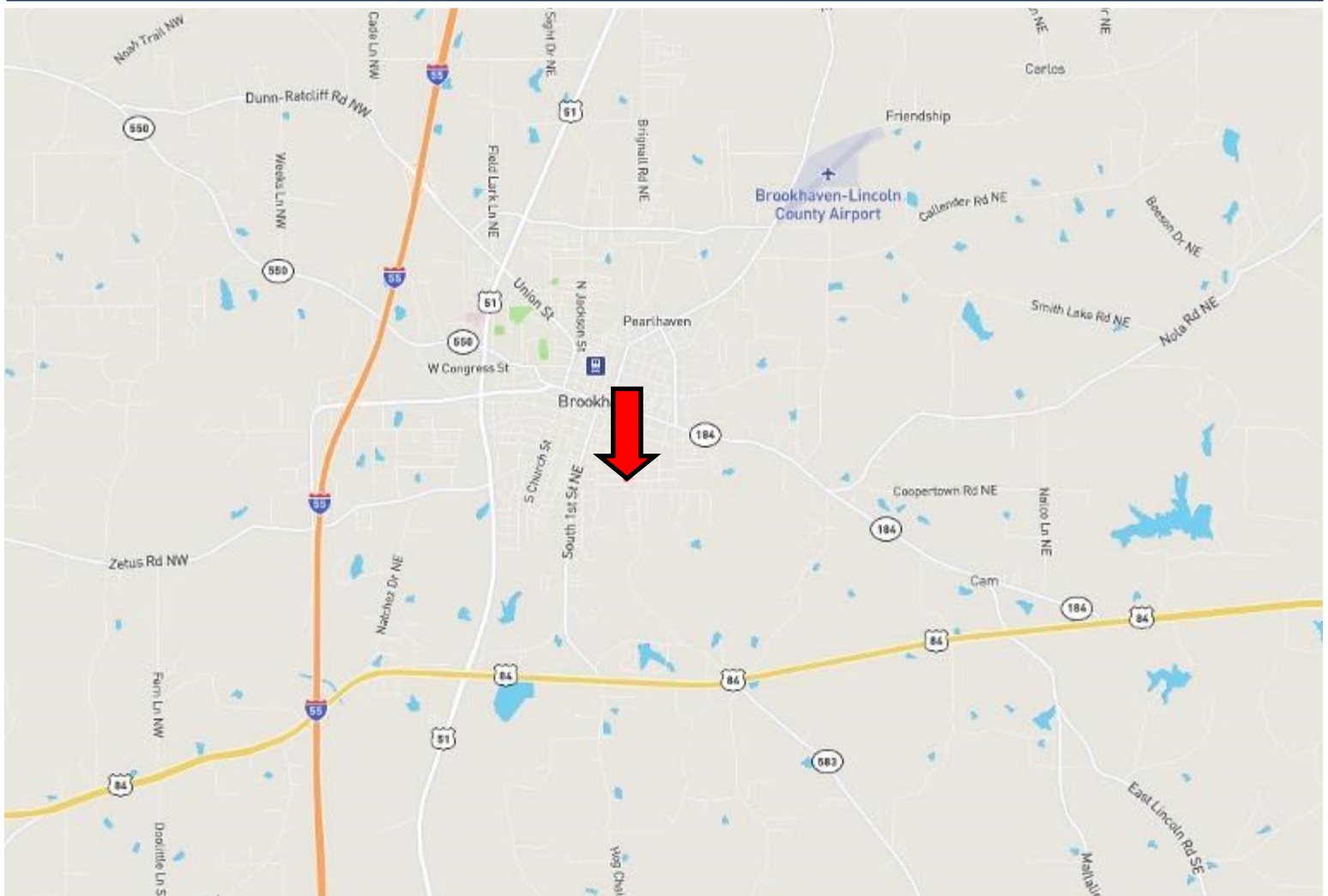
**A Real Estate Expert You Can Trust**

TomSmithLandandHomes.com

Information is believed to be accurate but not guaranteed.



# Directional Map



Directions from the intersection of Brookway Boulevard and US-51 in Brookhaven, MS: Travel east on Brookway Boulevard for .5 miles. Turn right onto West Cherokee Street and travel .3 miles. Turn right onto South Jackson Street and travel .3 miles. Turn left onto the 3<sup>rd</sup> cross street onto West Minnesota Street. Turn right onto South Washington Street, the home will be on the left.  
639 South Washington St. Brookhaven, MS 39601—Click for Directions



**CLIF  
CANNON**  
REALTOR®

Office: 601.990.5070  
Cell: 601.565.1070  
Clif@TomSmithLand.com



**A Real Estate Expert You Can Trust**

TomSmithLandandHomes.com

Information is believed to be accurate but not guaranteed.

