

# Hunter's Paradise in the Mississippi Delta 396± Acres in Leflore County, MS



Explore this 396+/- acre Mississippi Delta hunting property in a prime location in Leflore County, just north of Greenwood, MS. This property is equipped with utilities and water along the road, providing an ideal spot for a campsite. This property is a hunter's paradise with three culverts that can be strategically utilized for duck holes, along with 3-4 timber duck holes and 8-10 deer food plots featuring tower stands and feeders. With frontage on Hwy 7 and a secure gated entrance, the tract offers easy access. The wildlife is abundant, with deer, ducks, squirrels, rabbits, and occasional turkeys traversing the landscape. The property's versatility shines through its year-round hunting potential, complemented by a pond that is a reliable water source for your duck holes. An old railroad easement, integrated into the property, grants access to the giant sand creek and levee, enhancing your hunting experience as you track mature bucks along the creek. Take the chance to witness the endless possibilities of this 396+/- acre hunting tract. For a private showing, contact Anthony today!



**ANTHONY  
STEEN**

REALTOR®

Office: 662.441.2500

Cell: 662.645.5151

Anthony@TomSmithLand.com



**A Real Estate Expert You Can Trust**

TomSmithLandandHomes.com

Information is believed to be accurate but not guaranteed.





# ANTHONY STEEN

REALTOR®

Office: 662.441.2500

Cell: 662.645.5151

Anthony@TomSmithLand.com



**A Real Estate Expert You Can Trust**

TomSmithLandandHomes.com

Information is believed to be accurate but not guaranteed.





# ANTHONY STEEN

REALTOR®

Office: 662.441.2500

Cell: 662.645.5151

Anthony@TomSmithLand.com



**A Real Estate Expert You Can Trust**

TomSmithLandandHomes.com

Information is believed to be accurate but not guaranteed.





# ANTHONY STEEN

REALTOR®

Office: 662.441.2500

Cell: 662.645.5151

Anthony@TomSmithLand.com

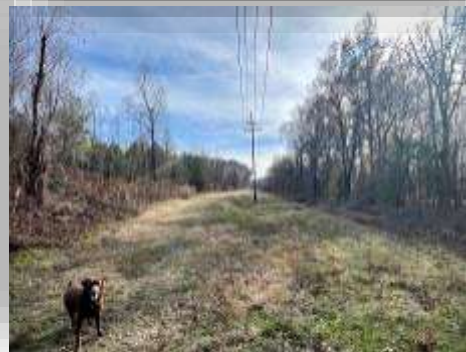
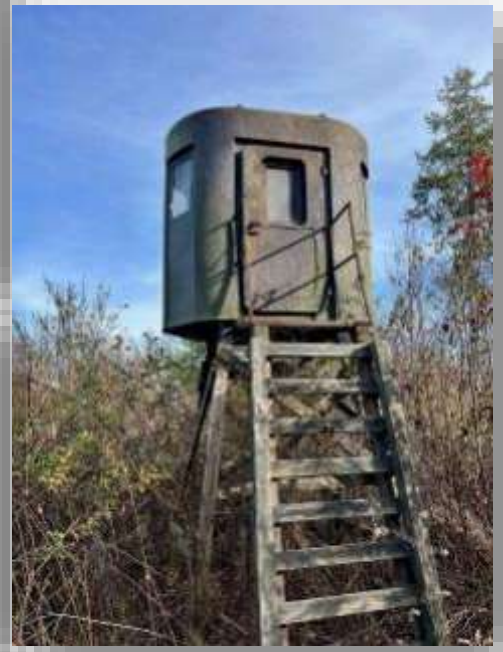


**A Real Estate Expert You Can Trust**

TomSmithLandandHomes.com

Information is believed to be accurate but not guaranteed.





# ANTHONY STEEN

REALTOR®

Office: 662.441.2500

Cell: 662.645.5151

Anthony@TomSmithLand.com



**A Real Estate Expert You Can Trust**

TomSmithLandandHomes.com

Information is believed to be accurate but not guaranteed.





# ANTHONY STEEN

REALTOR®

Office: 662.441.2500

Cell: 662.645.5151

Anthony@TomSmithLand.com



**A Real Estate Expert You Can Trust**

TomSmithLandandHomes.com

Information is believed to be accurate but not guaranteed.



# AERIAL MAP



[Click for Interactive Map](#)

**ANTHONY STEEN**

REALTOR®

Office: 662.441.2500

Cell: 662.645.5151

Anthony@TomSmithLand.com



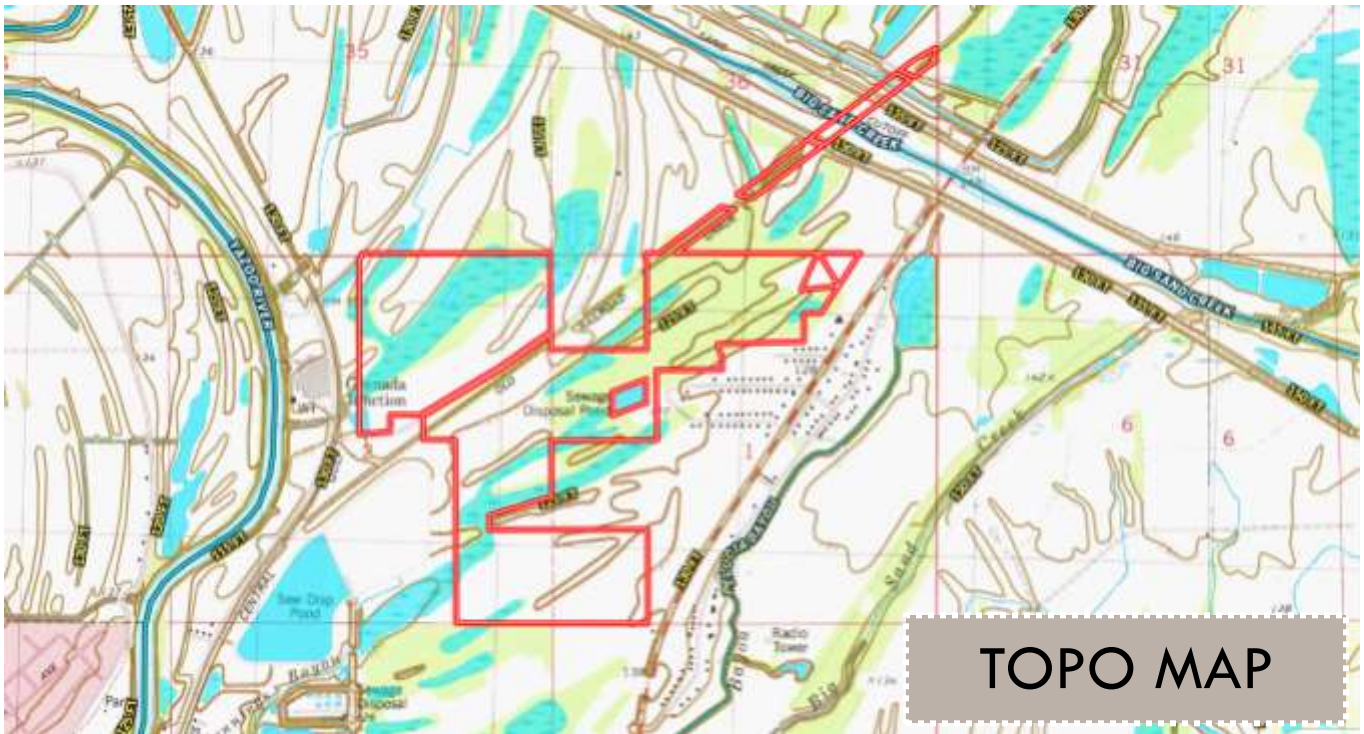
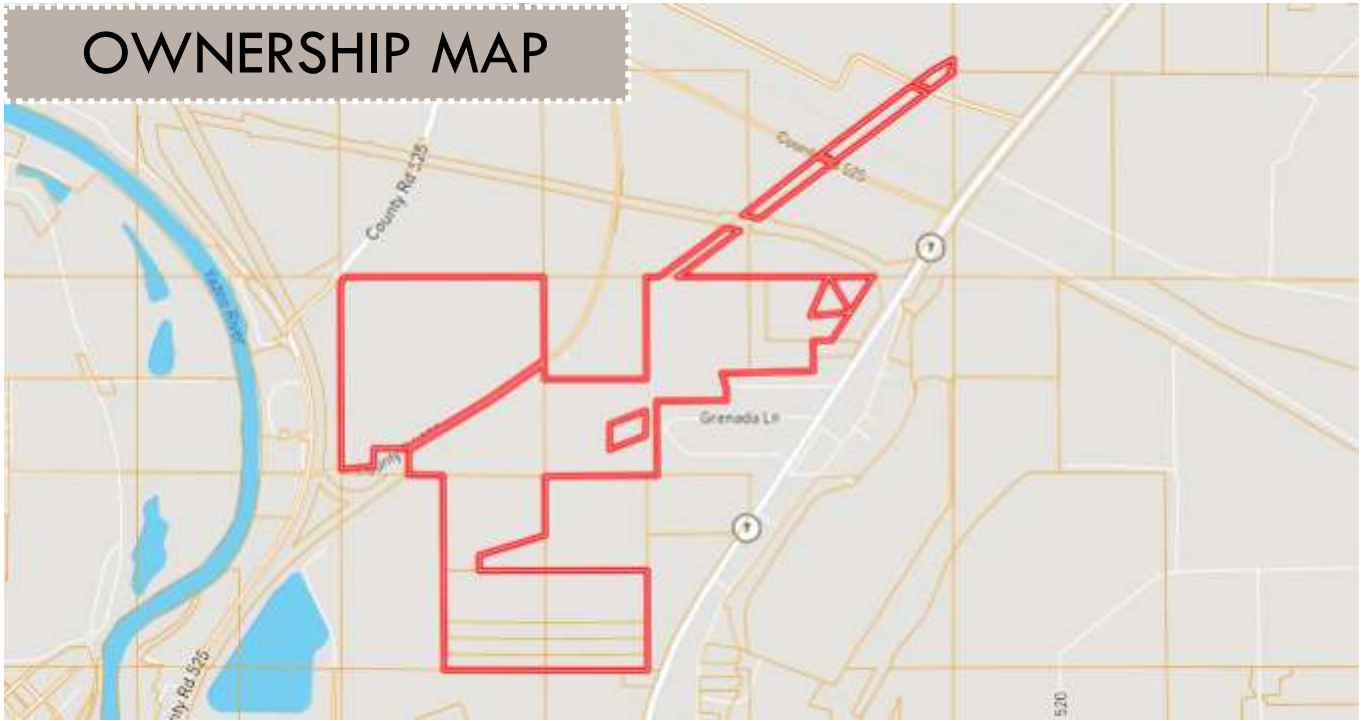
**A Real Estate Expert You Can Trust**

TomSmithLandandHomes.com

Information is believed to be accurate but not guaranteed.



# OWNERSHIP MAP



# TOPO MAP

**ANTHONY STEEN**

REALTOR®

Office: 662.441.2500

Cell: 662.645.5151

Anthony@TomSmithLand.com



**A Real Estate Expert You Can Trust**

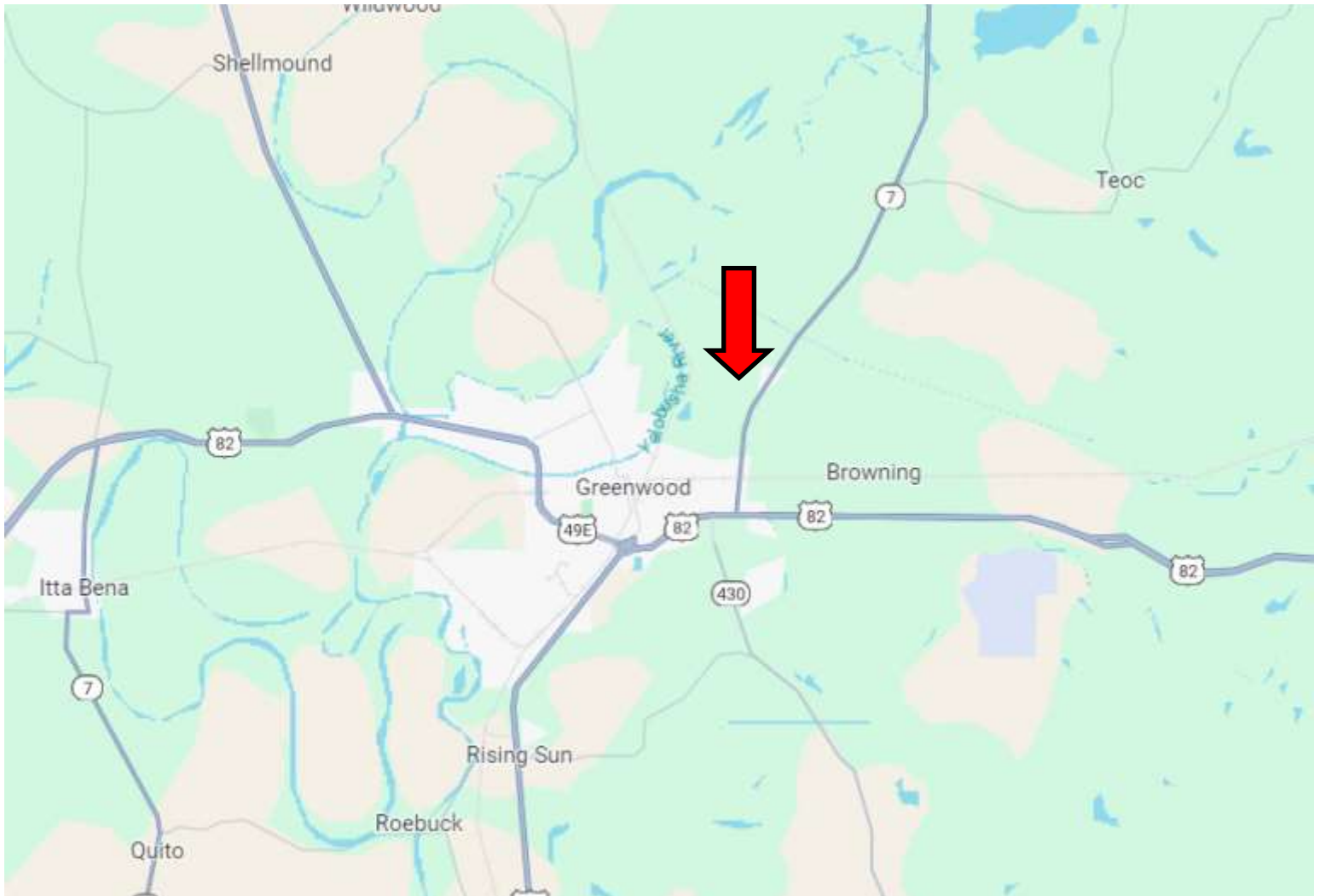
TomSmithLandandHomes.com

Information is believed to be accurate but not guaranteed.





# DIRECTIONAL MAP



**Directions from Greenwood, MS:** Travel East on Hwy 82 Frontage Road for approximately 1.6 miles. Turn left onto Hwy 7 N and travel 2.5 miles. The property will be on the left. **[Click for Google Maps.](#)**



**ANTHONY  
STEEN**

REALTOR®

Office: 662.441.2500

Cell: 662.645.5151

[Anthony@TomSmithLand.com](mailto:Anthony@TomSmithLand.com)



**A Real Estate Expert You Can Trust**

[TomSmithLandandHomes.com](http://TomSmithLandandHomes.com)

Information is believed to be accurate but not guaranteed.

