

# Diverse Pastureland 35± Acres in Lincoln County, MS



**\$210,000**

Discover an ideal piece of pastureland in the sought-after Bogue Chitto School District, just minutes from Summit, MS. This impressive 35± acre Lincoln County tract features a pre-installed gravel pad overlooking the 1.5+/- acre pond. The landscape consists of 20± acres of open pasture, complemented by sparsely wooded areas, creating ample grazing space that is entirely fenced and ready for your livestock. Throughout the property, majestic oaks provide generous shade, enhancing the overall appeal and adding to the convenience and versatility of this exceptional property. Call Clif to schedule your showing today!



**CLIF  
CANNON**  
REALTOR®

Office: 601.990.5070

Cell: 601.565.1070

Clif@TomSmithLand.com



**A Real Estate Expert You Can Trust**

TomSmithLandandHomes.com

Information is believed to be accurate but not guaranteed.





**CLIF CANNON**

REALTOR

Office: 601.990.2000

Cell: 601.563.1076

Clif@TomSmithLand.com



**A Real Estate Expert You Can Trust**

[TomSmithLandandHomes.com](http://TomSmithLandandHomes.com)

Information is believed to be accurate but not guaranteed.





# CLIF CANNON

REALTOR®

Office: 601.990.5070

Cell: 601.565.1070

Clif@TomSmithLand.com



A Real Estate Expert You Can Trust

TomSmithLandandHomes.com

Information is believed to be accurate but not guaranteed.





## CLIF CANNON

REALTOR®

Office: 601.990.5070

Cell: 601.565.1070

Clif@TomSmithLand.com



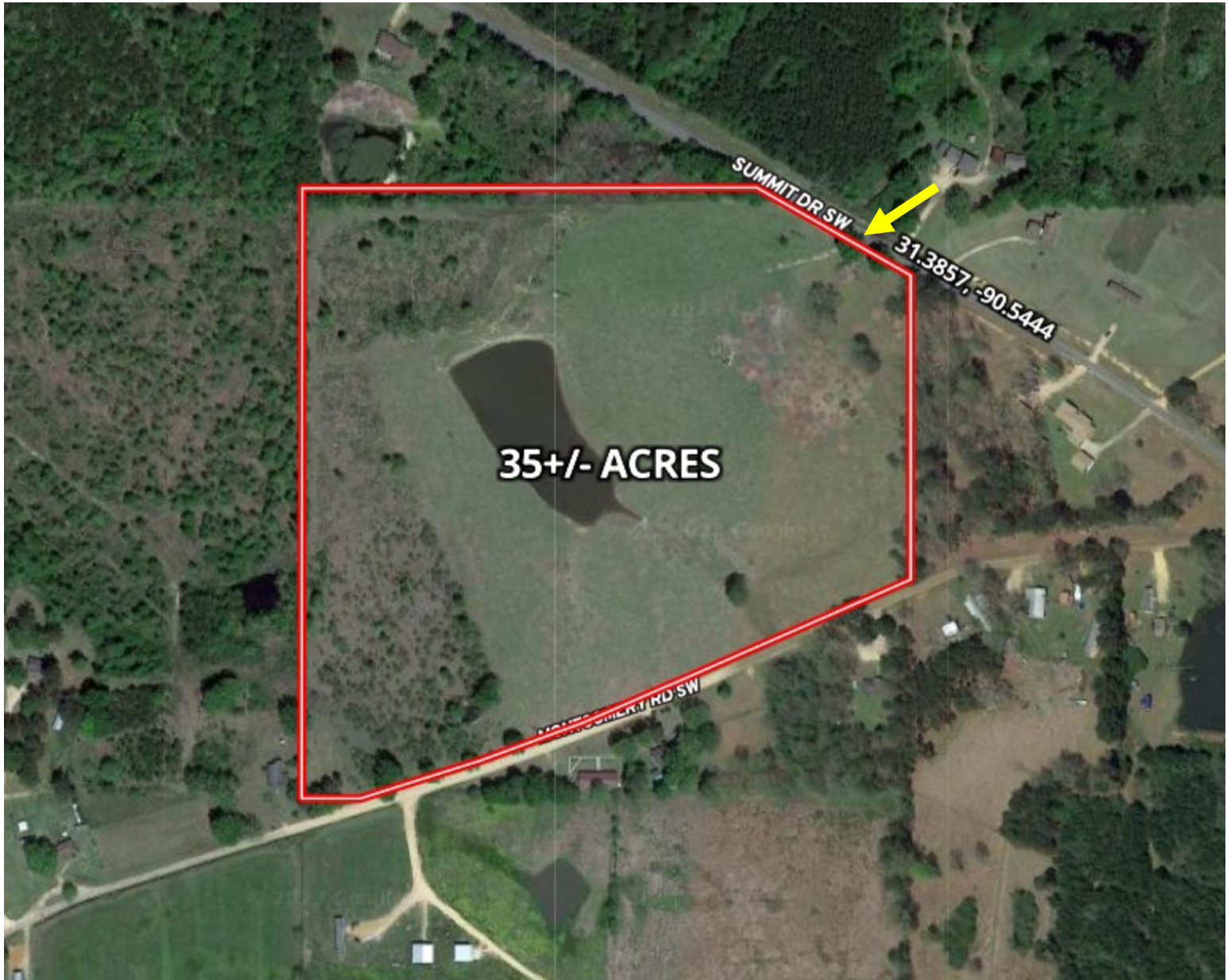
A Real Estate Expert You Can Trust

TomSmithLandandHomes.com

Information is believed to be accurate but not guaranteed.



# Aerial Map



[Click Here for an Interactive Map](#)

**CLIF CANNON**

REALTOR®

Office: 601.990.5070

Cell: 601.565.1070

Clif@TomSmithLand.com



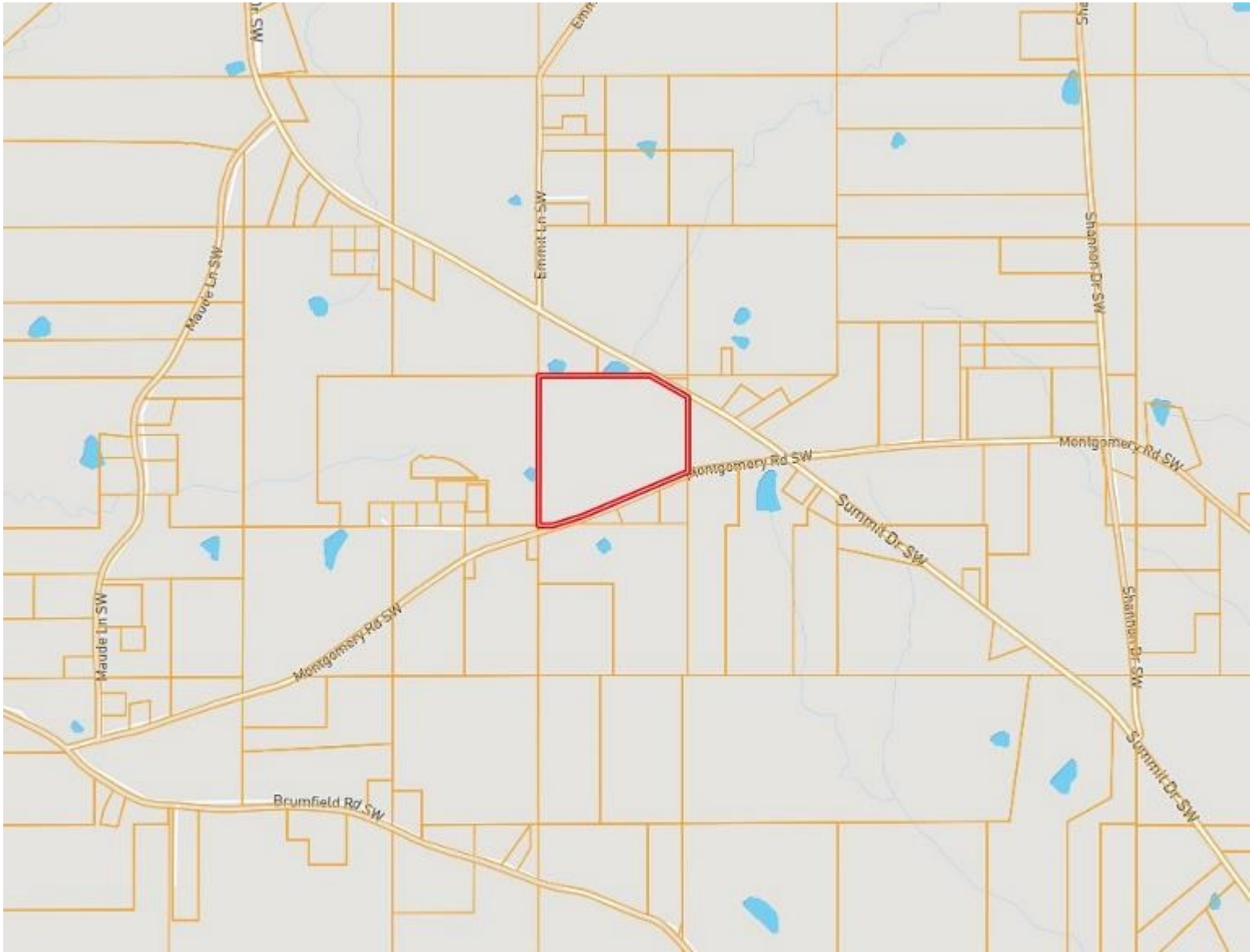
**A Real Estate Expert You Can Trust**

TomSmithLandandHomes.com

Information is believed to be accurate but not guaranteed.



# Ownership Map



**CLIF CANNON**

REALTOR®

Office: 601.990.5070

Cell: 601.565.1070

Clif@TomSmithLand.com



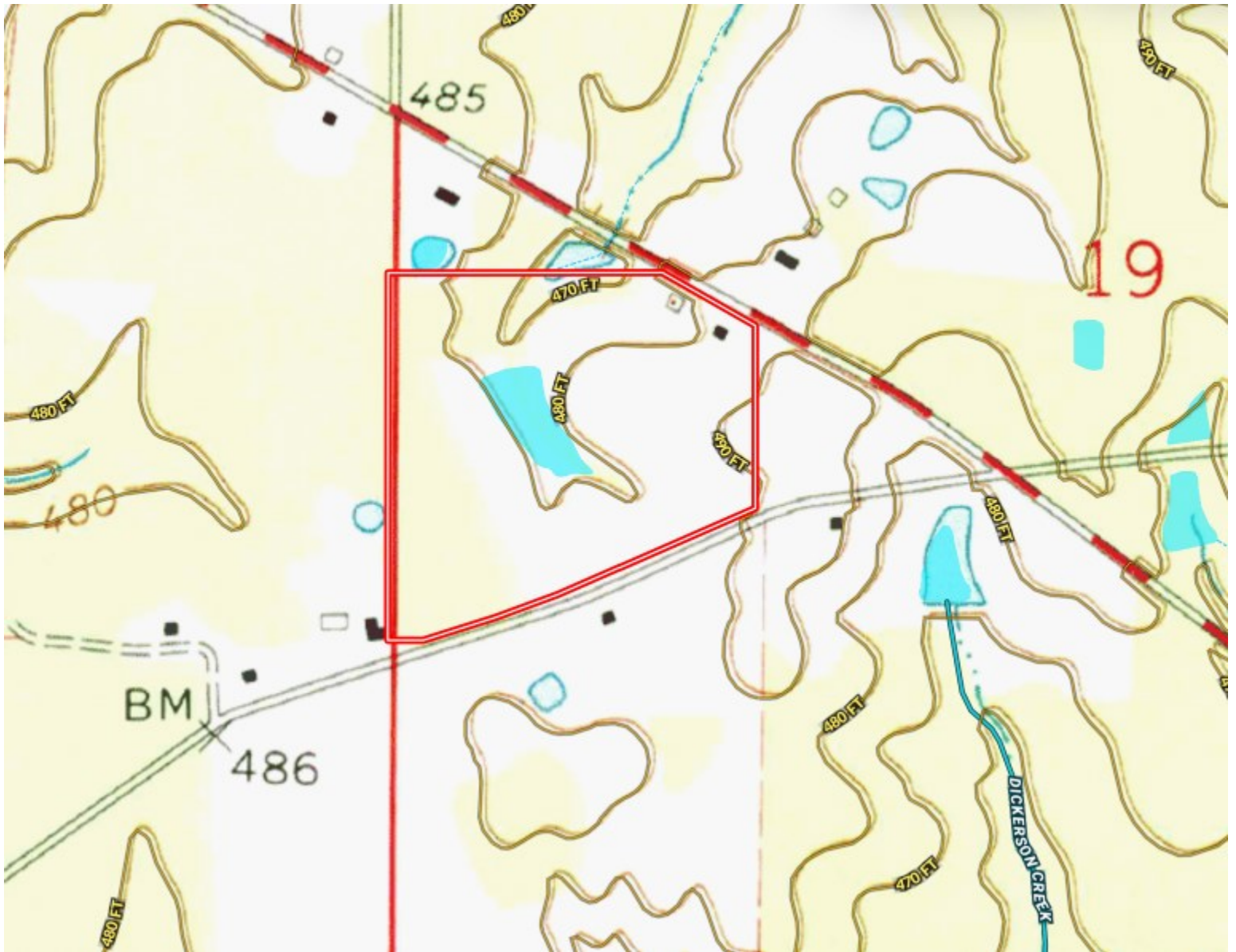
**A Real Estate Expert You Can Trust**

[TomSmithLandandHomes.com](http://TomSmithLandandHomes.com)

Information is believed to be accurate but not guaranteed.



# Topography Map



**CLIF CANNON**

REALTOR®

Office: 601.990.5070

Cell: 601.565.1070

Clif@TomSmithLand.com



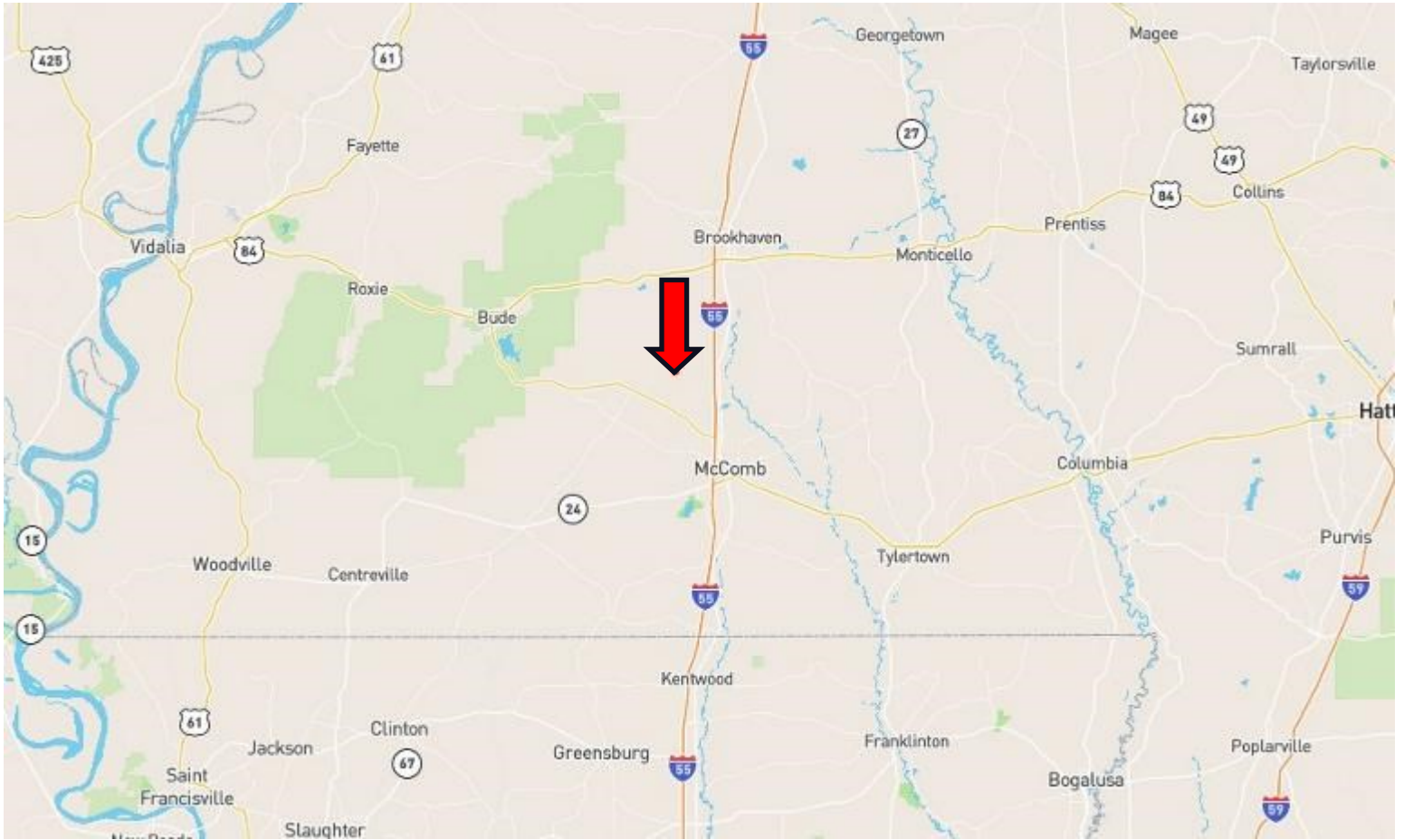
**A Real Estate Expert You Can Trust**

TomSmithLandandHomes.com

Information is believed to be accurate but not guaranteed.



# Directional Map



Directions from the intersection of I-55 and US-98 in Summit, MS: Take exit 20B and turn onto US-9. Travel west on US-98 for 100ft. Turn right onto Old Brookhaven Road, and travel 4.8 miles. Continue onto Summit Drive SW and travel an additional 3.4 miles. The property will be on the left. [Google Map Link](#)

**1033 Summit Drive SW  
Bogue Chitto, MS 39629**



**CLIF  
CANNON**  
REALTOR®

Office: 601.990.5070  
Cell: 601.565.1070  
Clif@TomSmithLand.com



**A Real Estate Expert You Can Trust**

TomSmithLandandHomes.com

Information is believed to be accurate but not guaranteed.

