

# .64± Acre Commercial Property in Alcorn County, MS



Situated off U.S. Hwy 72 on Liddon Lake Road, this 0.64± acre (27,878 sf) Alcorn County, MS, property presents a level topography and falls within the RM zoning, a Mixed Residential District. This zoning permits both residential and limited commercial uses. The house on the property features four bedrooms, two baths, a living room, a kitchen, and a utility room, making it a potential residence or convertible office space with some needed repairs. A metal storage building is located at the back of the lot. All city utilities are readily available. The property is located adjacent to the Suburban Corridor District, so a zoning change seems likely. Don't let this opportunity slip away - call Tom today!

Directions from the intersection of US Hwy 45 and US Hwy 72 in Corinth, MS: Travel US Hwy 72 east for 2.6 miles. Turn left onto Liddon Lake Road. After 250 feet, the property will be on the left. Address: 2003 Liddon Lake Road [GOOGLE MAP LINK](#)



**TOM  
WISEMAN**  
ASSOCIATE BROKER  
Office: 662.268.6333  
Cell: 662.317.0467  
TWiseman@TomSmithLand.com



## A Real Estate Expert You Can Trust

TomSmithLandandHomes.com

Information is believed to be accurate but not guaranteed.





**TOM WISEMAN**  
 ASSOCIATE BROKER  
 Office: 662.268.6333  
 Cell: 662.317.0467  
 TWiseman@TomSmithLand.com

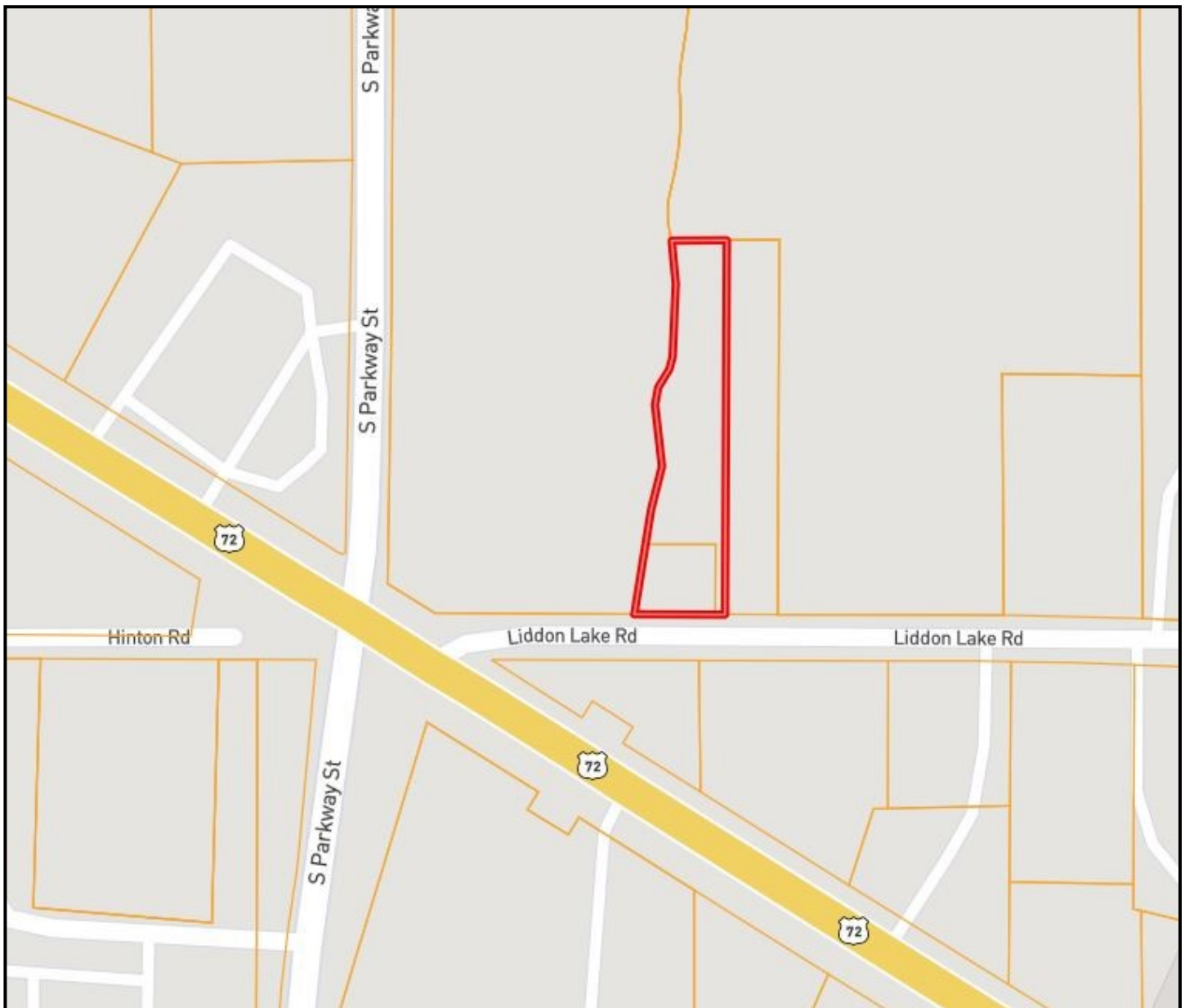


**A Real Estate Expert You Can Trust**  
 TomSmithLandandHomes.com

Information is believed to be accurate but not guaranteed.



# OWNERSHIP MAP



**TOM WISEMAN**

ASSOCIATE BROKER

Office: 662.268.6333

Cell: 662.317.0467

TWiseman@TomSmithLand.com



**A Real Estate Expert You Can Trust**

TomSmithLandandHomes.com

Information is believed to be accurate but not guaranteed.



# AERIAL MAP



[CLICK HERE FOR AN INTERACTIVE MAP LINK](#)

**TOM WISEMAN**

ASSOCIATE BROKER

Office: 662.268.6333

Cell: 662.317.0467

TWiseman@TomSmithLand.com



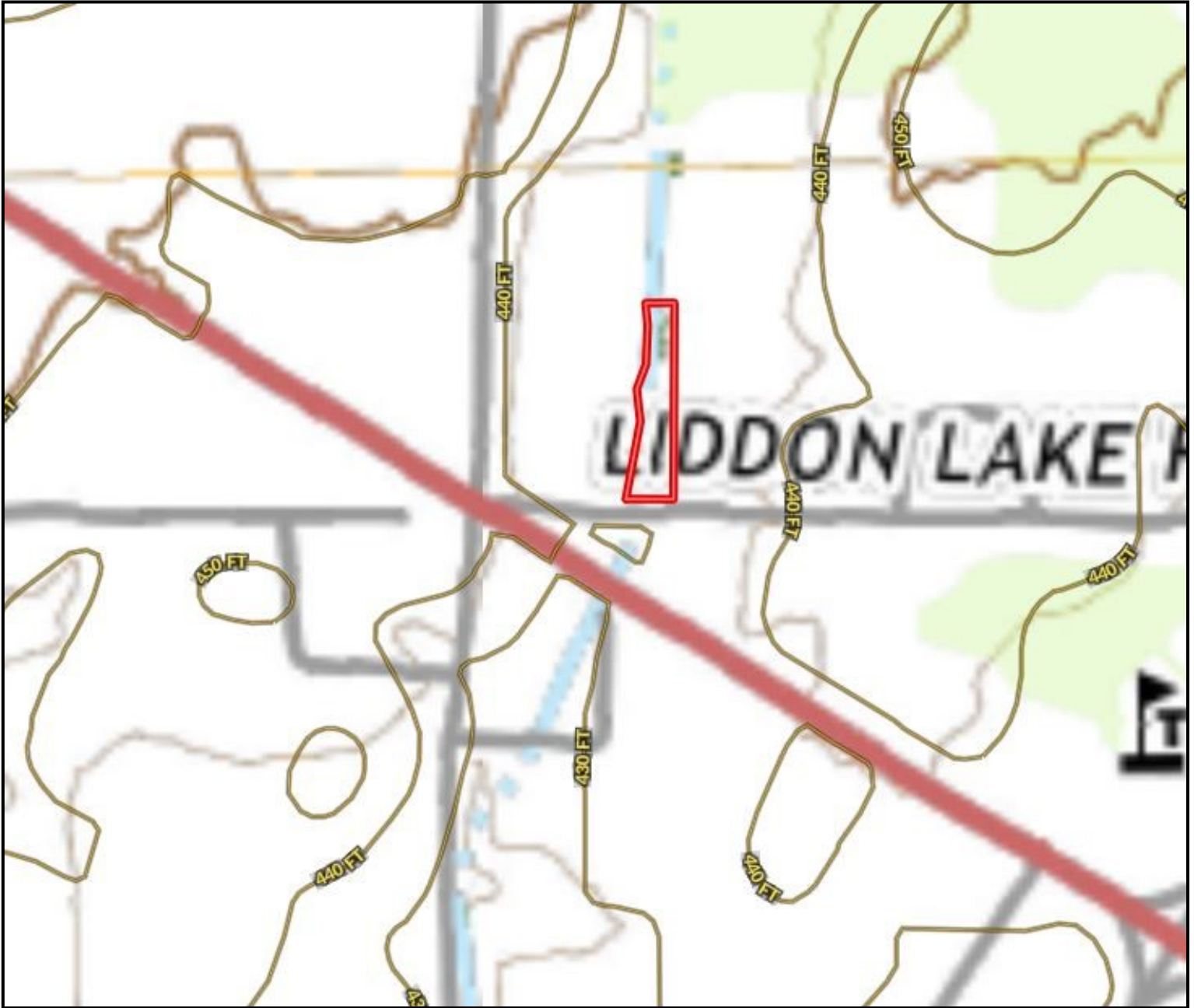
A Real Estate Expert You Can Trust

TomSmithLandandHomes.com

Information is believed to be accurate but not guaranteed.



# TOPO MAP



**TOM WISEMAN**  
ASSOCIATE BROKER  
Office: 662.268.6333  
Cell: 662.317.0467  
TWiseman@TomSmithLand.com

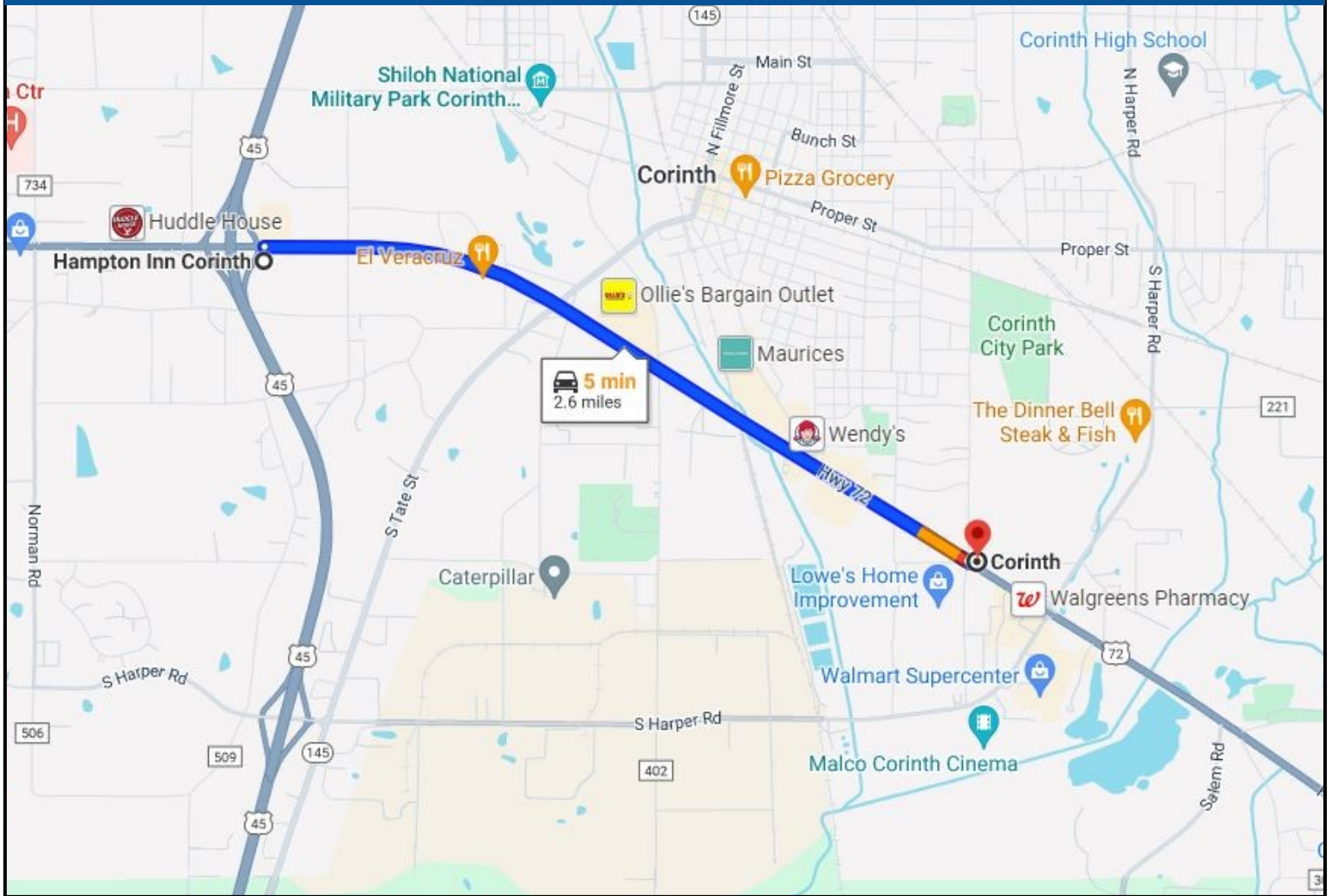


**A Real Estate Expert You Can Trust**  
TomSmithLandandHomes.com

Information is believed to be accurate but not guaranteed.



# DIRECTIONAL MAP



Directions from the intersection of US Hwy 45 and US Hwy 72 in Corinth, MS: Travel US Hwy 72 east for 2.6 miles. Turn left onto Liddon Lake Road. After 250 feet, the property will be on the left.

Address: 2003 Liddon Lake Road [GOOGLE MAP LINK](#)



**TOM  
WISEMAN**  
ASSOCIATE BROKER  
Office: 662.268.6333  
Cell: 662.317.0467  
TWiseman@TomSmithLand.com



**A Real Estate Expert You Can Trust**

TomSmithLandandHomes.com

Information is believed to be accurate but not guaranteed.

