

BELLE TRACE LOTS

Webster County, MS



\$25,000

Are you looking for a place to build your dream home? Look no further than these ten lots in Belle Trace, in Webster County, MS. These lots range from approximately 1.5±-2± acres and all feature frontage on Highway 15 with easy access to all utilities and access to Highway 82. With this location, Starkville, MS, is only 24 minutes away, Winona is 40 minutes away, and Mathiston is just seconds away as this property sits on the outskirts of the Mathiston city limits. To schedule a private showing, call or text Walker!

Directions from Mathiston, MS: Travel southwest on MS-15 South for 486 feet. Use the right lane to merge onto MS-15 South/US-82 West via the ramp towards Mathiston/Winona. After 1.1 miles, the property will be on your left.



**WALKER
TRANUM**
REALTOR®

Office: 662.268.6333
Cell: 662.769.1442

Walker@TomSmithHomes.com



A Real Estate Expert You Can Trust

TomSmithLandandHomes.com

Information is believed to be accurate but not guaranteed.





**WALKER
TRANUM**
REALTOR®

Office: 662.268.6333
Cell: 662.769.1442

Walker@TomSmithHomes.com



A Real Estate Expert You Can Trust

TomSmithLandandHomes.com

Information is believed to be accurate but not guaranteed.





**WALKER
TRANUM**
REALTOR®

Office: 662.268.6333
Cell: 662.769.1442

Walker@TomSmithHomes.com



A Real Estate Expert You Can Trust

TomSmithLandandHomes.com

Information is believed to be accurate but not guaranteed.

Entrepreneur
2011-2023
BEST
BROKERAGES

Aerial Map



Click [Here](#) for Interactive Link



**WALKER
TRANUM**
REALTOR®

Office: 662.268.6333
Cell: 662.769.1442

Walker@TomSmithHomes.com



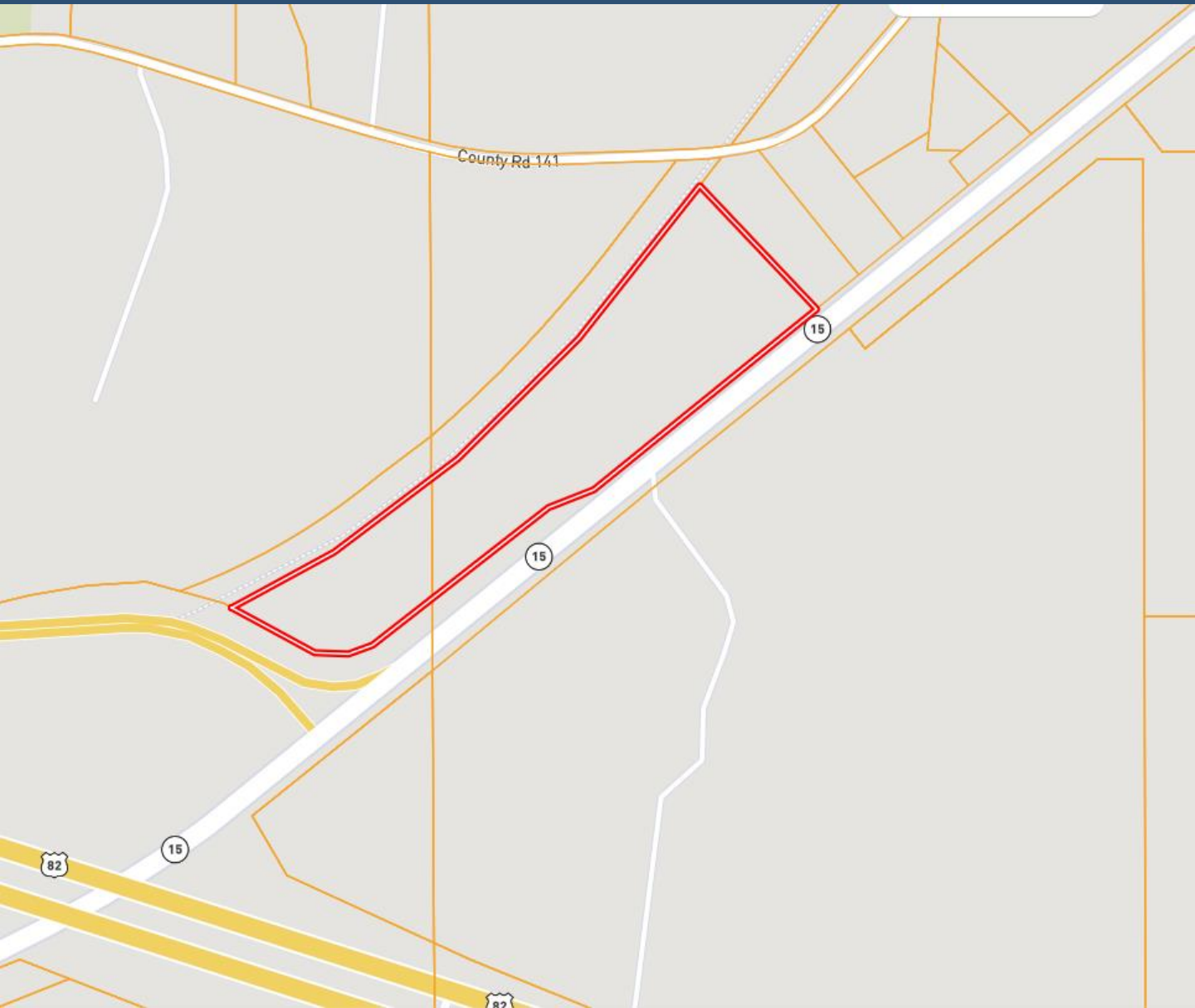
A Real Estate Expert You Can Trust

TomSmithLandandHomes.com

Information is believed to be accurate but not guaranteed.



Ownership Map



**WALKER
TRANUM**
REALTOR®

Office: 662.268.6333
Cell: 662.769.1442

Walker@TomSmithHomes.com



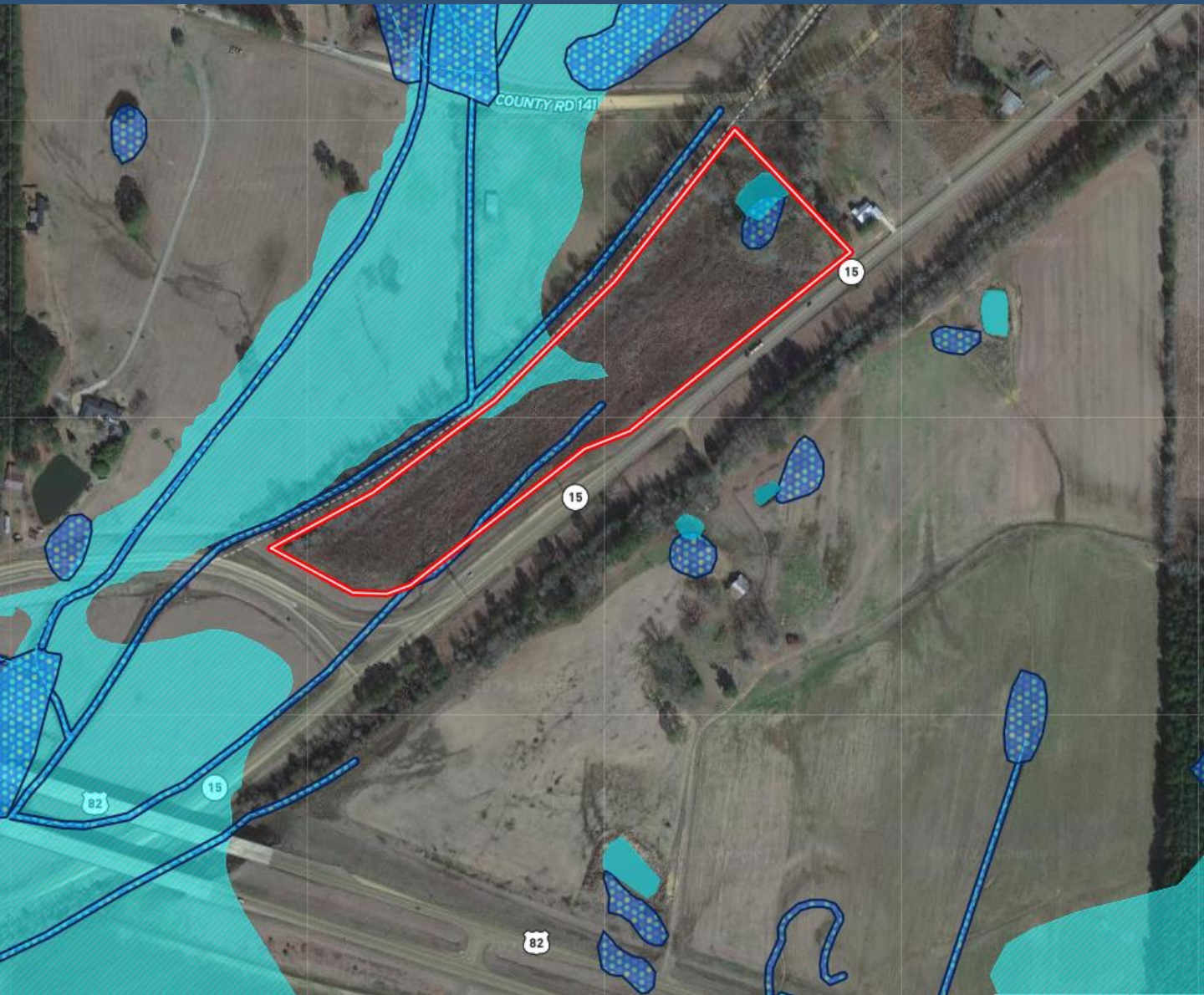
A Real Estate Expert You Can Trust

TomSmithLandandHomes.com

Information is believed to be accurate but not guaranteed.



Flood Map



**WALKER
TRANUM**
REALTOR®

Office: 662.268.6333
Cell: 662.769.1442

Walker@TomSmithHomes.com



A Real Estate Expert You Can Trust

TomSmithLandandHomes.com

Information is believed to be accurate but not guaranteed.

2011-2023
BEST
BROKERAGES

Directional Map



Directions from Mathiston, MS: Travel southwest on MS-15 South for 486 feet. Use the right lane to merge onto MS-15 South/US-82 West via the ramp towards Mathiston/Winona. After 1.1 miles, the property will be on your left.

[Directional Map Link](#)



**WALKER
TRANUM**
REALTOR®

Office: 662.268.6333

Cell: 662.769.1442

Walker@TomSmithHomes.com



A Real Estate Expert You Can Trust

TomSmithLandandHomes.com

Information is believed to be accurate but not guaranteed.

