

FLORA HOME WITH ACREAGE

5.7+/- ACRES IN MADISON COUNTY, MS



170 WINCHESTER ROAD FLORA, MS 39701

\$569,000

- Custom-Built, Like New Home in Flora, MS
- 5.77± Acre Lot
- 4 Bed/2.5 Baths
- 2,750 Sq Ft
- Open Floor Plan with High Ceilings
- Kitchen Features a Large Island, Stainless Steel Appliances, Gas Cooktop, Pantry
- Spacious Laundry Room with a Sink and Extra Storage
- Built-In Desk Area and Additional Storage from Garage Entrance
- Covered Front Porch
- Back Porch features an Outdoor kitchen, Swing Bed, Fireplace, and Shades
- Wooden Fenced Backyard
- Stocked Pond
- Three-car Garage with Storage Shelving



**HALEY
BELDEN**

REALTOR®

Office: 601.898.2772

Cell: 601.209.2310

Haley@TomSmithHomes.com



Expect More. Get More.

A Real Estate Expert You Can Trust

TomSmithLandandHomes.com

Information is believed to be accurate but not guaranteed.





Welcome to 170 Winchester Drive, Flora, MS, a stunning custom-built home that is like new and offers an ideal blend of luxury and comfort. This spacious residence has four bedrooms and two and a half bathrooms, all spread across 2,750 square feet of living space on a generous 5.77± acre lot. Step inside to an inviting open floor plan with high ceilings that enhance the sense of space and light. The living room, kitchen, and room/sitting area flow seamlessly, creating a perfect daily living and entertainment setting. The den features a large, inviting fireplace, perfect for cozy evenings. The beautiful kitchen offers ample counter space, a huge island with bar seating, stainless steel appliances, a gas cooktop, and a walk-in pantry. The dining room has excellent lighting for enjoying family meals. The large laundry room includes a sink and extra storage, and there is an additional bedroom off the laundry room that can serve as a gym, office, nursery, storage, or closet. Adjacent to the garage, you'll find a convenient desk and extra storage. The primary bedroom is a tranquil retreat with stunning stained wood ceilings and a custom-built in. The primary bathroom has a huge soaking tub, a separate shower and vanities, granite countertops, and two large closets. Three additional guest rooms and a guest bathroom with double sinks complete the accommodations. The outdoor living space is designed for relaxation and enjoyment. It features a front porch with views of the beautiful 5.77-acre lot and a grand back porch with an outdoor kitchen, swing bed, outdoor fireplace, and shades for sun protection. This area is perfect for entertaining and watching television outdoors. The backyard also includes a wooden railed fence that preserves the views of the lot and the stocked pond, ready for your enjoyment. The three-car garage offers ample space and shelving for storage.

The details in this home are like no other! Call Haley to schedule your appointment today to experience the quiet, peaceful living that Flora has to offer in this exceptional home.

A Real Estate Expert You Can Trust!

HALEY BELDEN
REALTOR®

O: 601.898.2772 C: 601.209.2310

Haley@TomSmithHomes.com

TomSmithLandandHomes.com



Expect More. Get More.



Information is believed to be accurate but not guaranteed.



A Real Estate Expert You Can Trust!

HALEY BELDEN

REALTOR®

O: 601.898.2772 C: 601.209.2310

Haley@TomSmithHomes.com

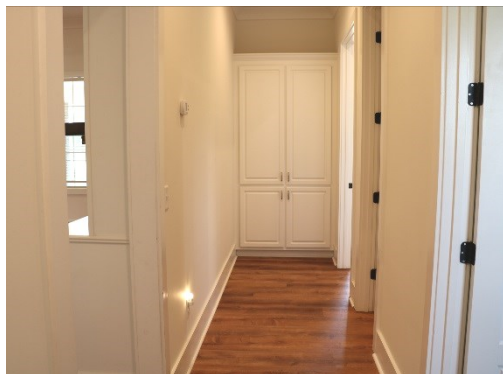
TomSmithLandandHomes.com

**Tom
Smith
LAND AND
HOMES**

Expect More. Get More.

1st Report
2011-2024
BEST
BROKERAGES

Information is believed to be accurate but not guaranteed.



A Real Estate Expert
You Can Trust!

HALEY BELDEN
REALTOR®

O: 601.898.2772 C: 601.209.2310

Haley@TomSmithHomes.com

TomSmithLandandHomes.com



Expect More. Get More.



Information is believed to be accurate but not guaranteed.



A Real Estate Expert You Can Trust!

HALEY BELDEN

REALTOR®

O: 601.898.2772 C: 601.209.2310

Haley@TomSmithHomes.com

TomSmithLandandHomes.com

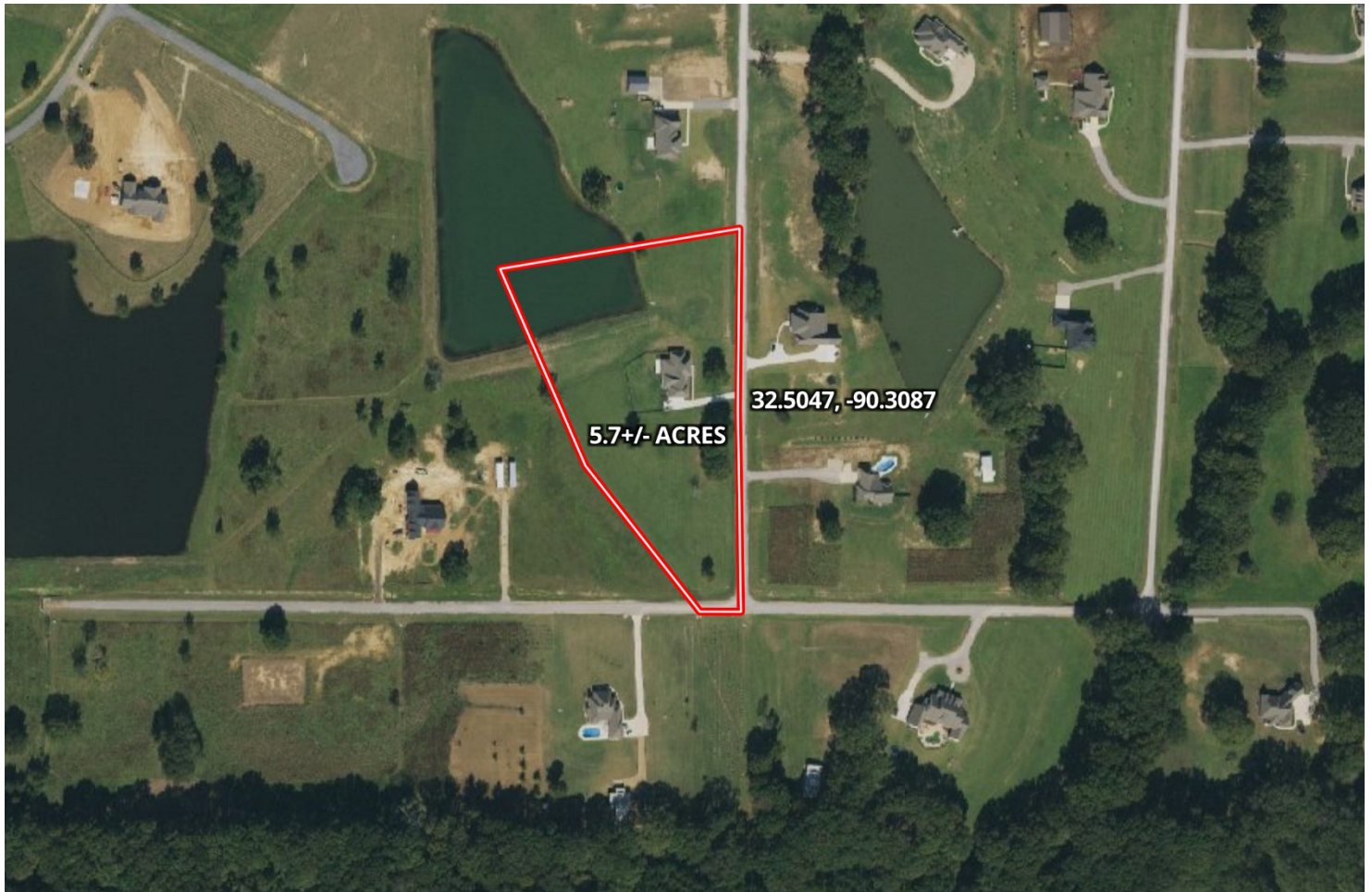
**Tom
Smith
LAND AND
HOMES**

Expect More. Get More.

1st Report
2011-2024
**BEST
BROKERAGES**

Information is believed to be accurate but not guaranteed.

AERIAL MAP



[Click HERE for the LandId Interactive Map Link](#)

A Real Estate Expert
You Can Trust!

HALEY BELDEN
REALTOR®

O: 601.898.2772 C: 601.209.2310

Haley@TomSmithHomes.com

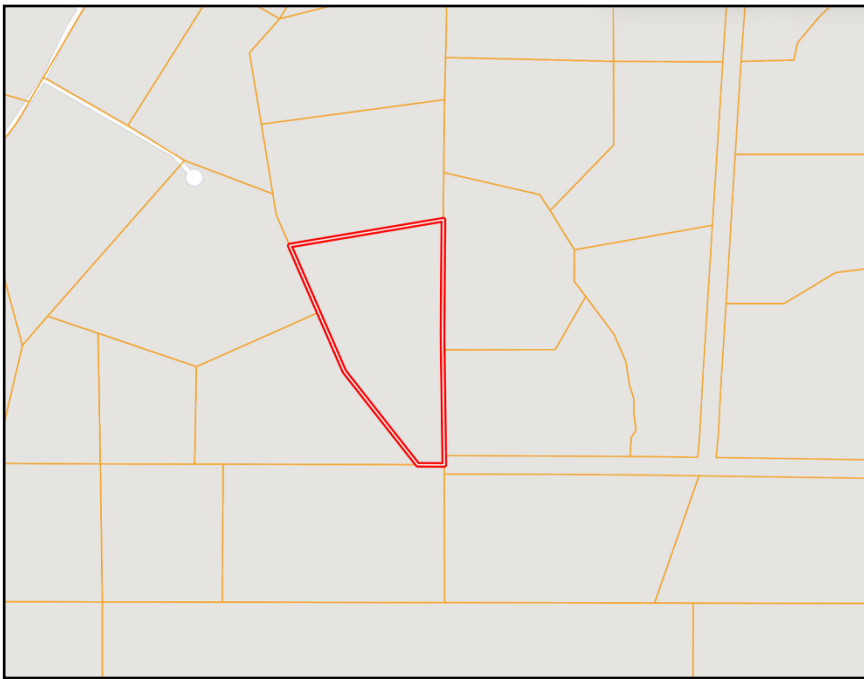
TomSmithLandandHomes.com



Expect More. Get More.

Information is believed to be accurate but not guaranteed.





OWNERSHIP MAP



TOPO MAP

A Real Estate Expert
You Can Trust!

HALEY BELDEN
REALTOR®

O: 601.898.2772 C: 601.209.2310

Haley@TomSmithHomes.com

TomSmithLandandHomes.com

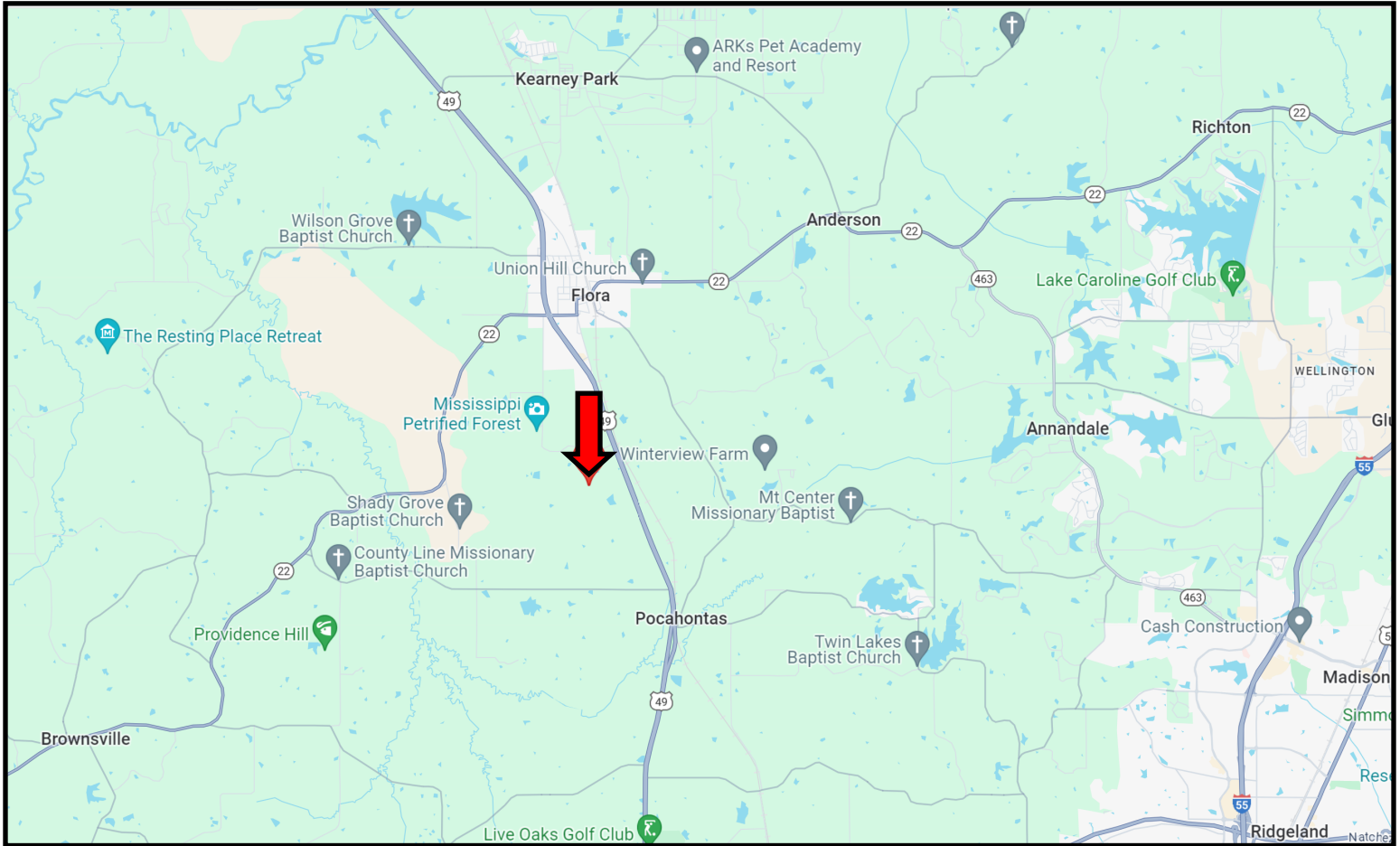


Expect More. Get More.

Information is believed to be accurate but not guaranteed.



DIRECTIONAL MAP



Directions from the intersection of Hwy 49 and Hwy 22 in Flora, MS: Travel Hwy 49 South for 2.1 miles. Turn right onto Petrified Forest Rd. and travel .4 miles. Turn left onto Winchester Rd. After .4 miles, the property will be on your right. [GOOGLE MAP LINK](#)



**HALEY
BELDEN**

REALTOR®

Office: 601.898.2772

Cell: 601.209.2310

Haley@TomSmithHomes.com



Expect More. Get More.

A Real Estate Expert You Can Trust

TomSmithLandandHomes.com

Information is believed to be accurate but not guaranteed.

