

# 170 Winchester Drive Flora, MS



## \$575,000

Just a little slice of Heaven! This five-year-old custom-built home is located in Heartland Estates on 5.7+/- beautiful acres in Madison County, MS. This immaculate 2,750 square foot, four bedrooms, 2 1/2 bath home has an open and inviting floor plan with 10-foot ceilings throughout. The living/kitchen area is spacious with a grand fireplace in the living room, complete with built-ins, new luxury wood vinyl flooring throughout the entire home, and plenty of windows with new custom blinds that provide tons of natural light and gorgeous views. The kitchen has ample counter space, a large island with bar seating, stainless steel appliances, a gas cooktop, and a huge walk-in pantry! You will enjoy evenings watching the sunset over the water from your oversized back porch with a built-in gas fireplace. This is also a great entertaining space where you can relax and catch the game on your outdoor TV while cooking steaks in the custom outdoor kitchen. If country living in Flora is your dream, call and see this amazing home before it's gone!



**ALLYSON  
MIZE**  
REALTOR®

Office: 601.898.2772

Cell: 662.607.1703

Allyson@TomSmithLand.com



## A Real Estate Expert You Can Trust

TomSmithLandandHomes.com

Information is believed to be accurate but not guaranteed.

LineReport  
2011-2023  
BEST  
BROKERAGES



*Call me today!*

**ALLYSON MIZE, REALTOR\***  
Allyson@TomSmithLand.com  
601.898.2772 office | 662.607.1703 cell



**TomSmithLandandHomes.com**

Information is believed to be accurate but not guaranteed.



*Call me today!*

**ALLYSON MIZE**, REALTOR\*  
Allyson@TomSmithLand.com  
601.898.2772 office | 662.607.1703 cell

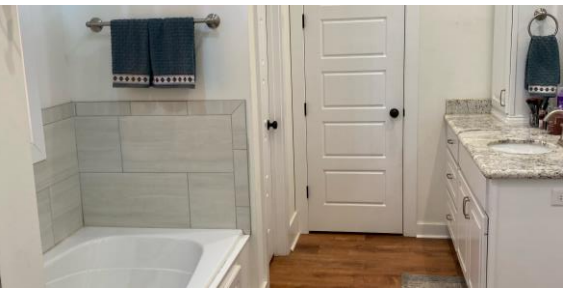


Expect More. Get More.



**TomSmithLandandHomes.com**

Information is believed to be accurate but not guaranteed.



*Call me today!*

**ALLYSON MIZE, REALTOR\***  
Allyson@TomSmithLand.com  
601.898.2772 office | 662.607.1703 cell



**TomSmithLandandHomes.com**

Information is believed to be accurate but not guaranteed.





*Call me today!*

**ALLYSON MIZE, REALTOR\***  
Allyson@TomSmithLand.com  
601.898.2772 office | 662.607.1703 cell



Expect More. Get More.

**TomSmithLandandHomes.com**

Information is believed to be accurate but not guaranteed.





*Call me today!*

**ALLYSON MIZE, REALTOR\***  
Allyson@TomSmithLand.com  
601.898.2772 office | 662.607.1703 cell



Expect More. Get More.

**TomSmithLandandHomes.com**

Information is believed to be accurate but not guaranteed.



# Aerial Map



[CLICK HERE FOR AN INTERACTIVE MAP](#)

*Call me  
today!*

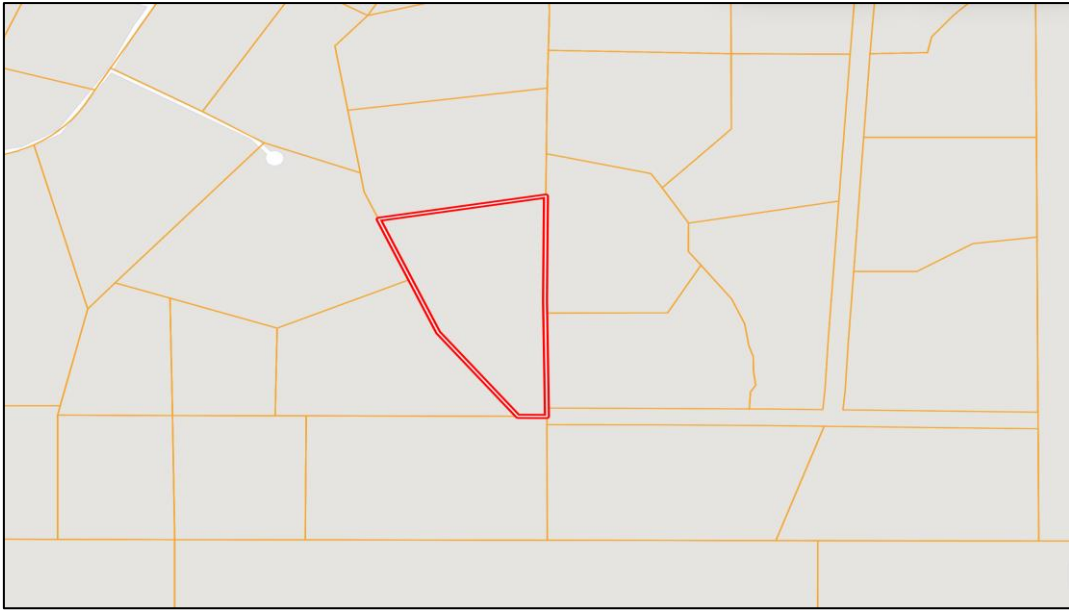
**ALLYSON MIZE, REALTOR\***  
Allyson@TomSmithLand.com  
601.898.2772 office | 662.607.1703 cell



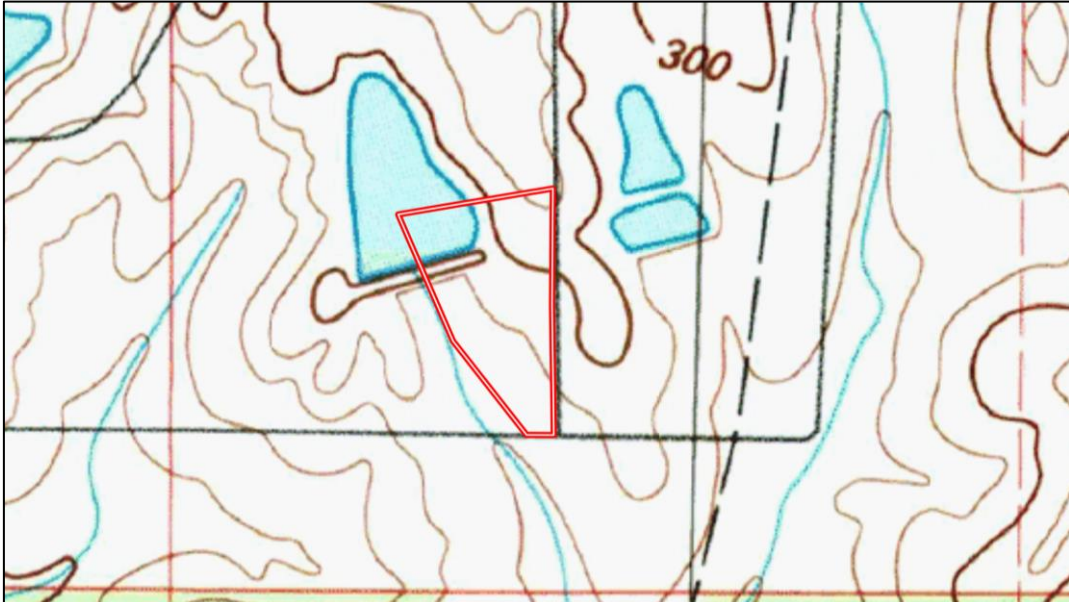
**TomSmithLandandHomes.com**

Information is believed to be accurate but not guaranteed.





Ownership  
Map



Topo  
Map

*Call me  
today!*

**ALLYSON MIZE**, REALTOR\*  
Allyson@TomSmithLand.com  
601.898.2772 office | 662.607.1703 cell



Expect More. Get More.

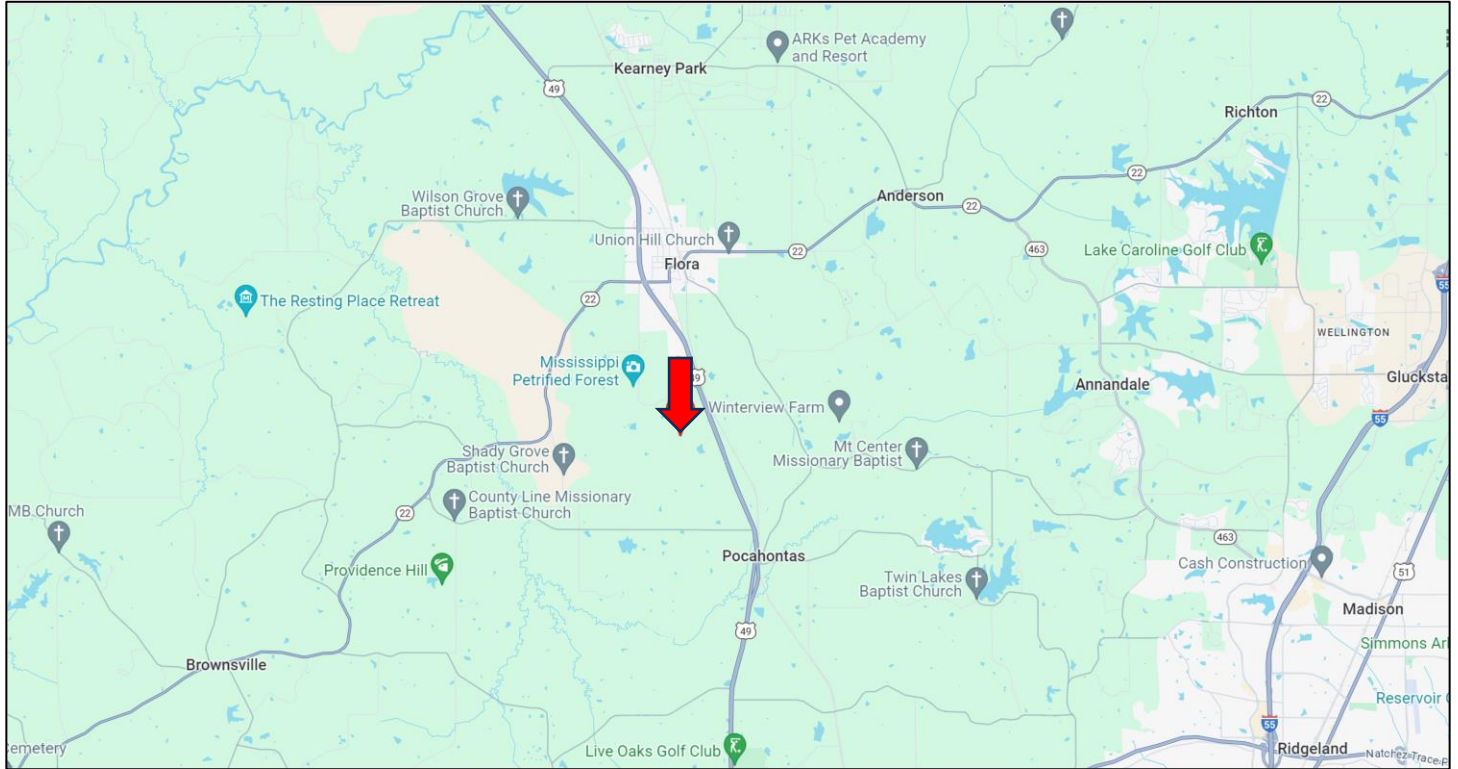


**TomSmithLandandHomes.com**

Information is believed to be accurate but not guaranteed.



# Directional Map



**Directions from the intersection of Hwy 49 and Hwy 22 in Flora, MS:** Travel Hwy 49 South for 2.1 miles. Turn right onto Petrified Forest Rd. and travel .4 miles. Turn left onto Winchester Rd. After .4 miles, the property will be on your right. [GOOGLE MAP LINK](#)



**ALLYSON  
MIZE**  
REALTOR®

Office: 601.898.2772

Cell: 662.607.1703

Allyson@TomSmithLand.com



**A Real Estate Expert You Can Trust**

TomSmithLandandHomes.com

Information is believed to be accurate but not guaranteed.

2011-2023  
**BEST**  
BROKERAGES