

5.21± Acre Residential Lot Marshall County, MS



This 5.21-acre+/- Marshall County residential lot is located off Hwy 4 on Clydia Road and offers easy commuting to Holly Springs or Senatobia. Access via written easement. Level topography.

Zoning permits mobile homes. Don't miss this opportunity. Call Tom today!

Directions from the intersection of Hwy 4 and Hwy 311 in Holly Springs, MS: Travel Hwy 311 north for 7.4 miles. Turn left onto Pleasant Hill Drive and travel .6 miles. Turn left to Dollie Irene Road and travel .2 miles. Turn left onto Leonard Lane. After 500 feet, the property will be on the right.

[GOOGLE MAP LINK](#)



**TOM
WISEMAN**

ASSOCIATE BROKER

Office: 662.268.6333

Cell: 662.317.0467

TWiseman@TomSmithLand.com



Expect More. Get More.

A Real Estate Expert You Can Trust

TomSmithLandandHomes.com

Information is believed to be accurate but not guaranteed.





TOM WISEMAN

ASSOCIATE BROKER

Office: 662.268.6333

Cell: 662.317.0467

TWiseman@TomSmithLand.com



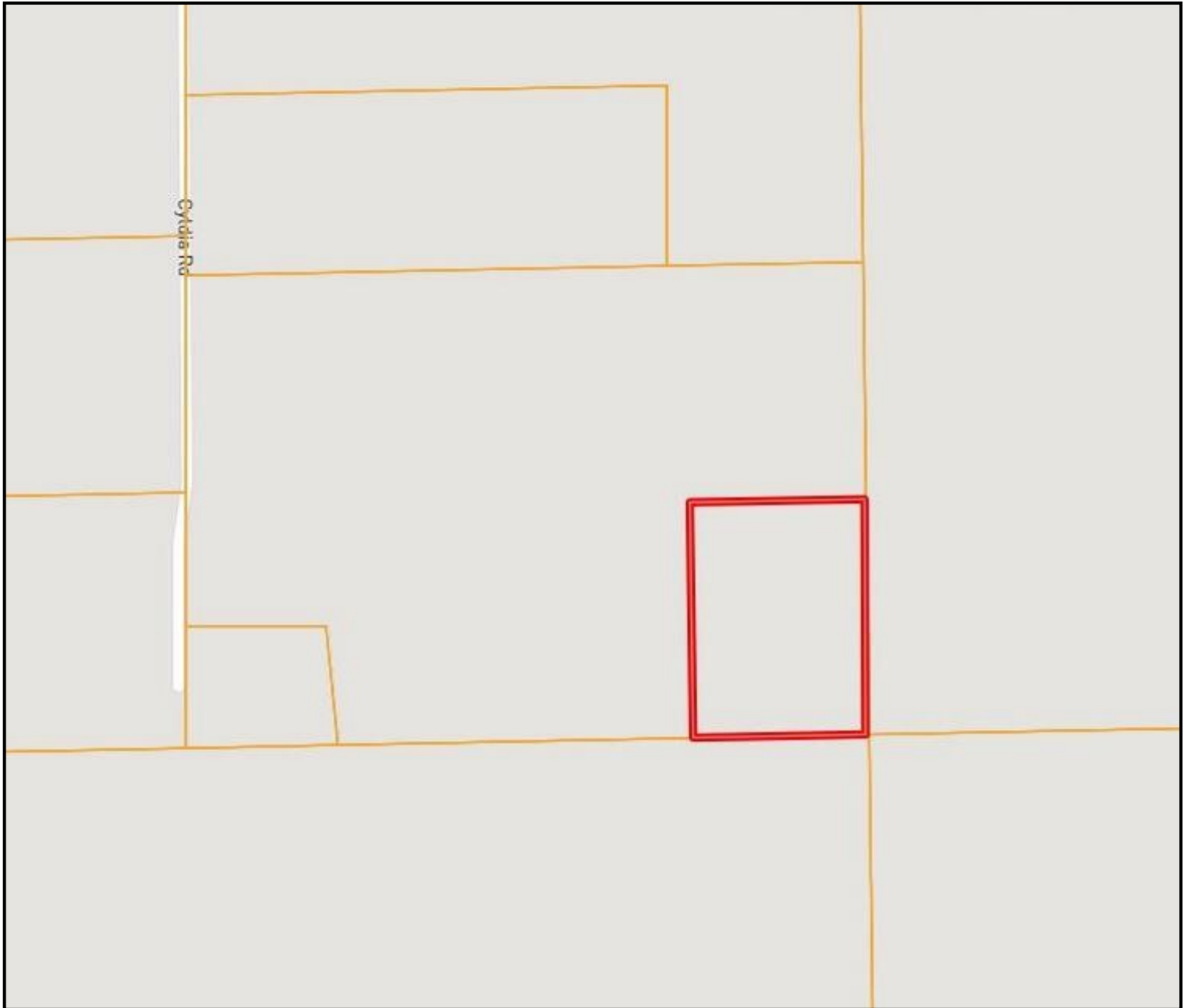
A Real Estate Expert You Can Trust

TomSmithLandandHomes.com

Information is believed to be accurate but not guaranteed.



OWNERSHIP MAP



TOM WISEMAN

ASSOCIATE BROKER

Office: 662.268.6333

Cell: 662.317.0467

TWiseman@TomSmithLand.com



A Real Estate Expert You Can Trust

TomSmithLandandHomes.com

Information is believed to be accurate but not guaranteed.



AERIAL MAP



[CLICK HERE FOR AN INTERACTIVE MAP LINK](#)

TOM WISEMAN

ASSOCIATE BROKER

Office: 662.268.6333

Cell: 662.317.0467

TWiseman@TomSmithLand.com



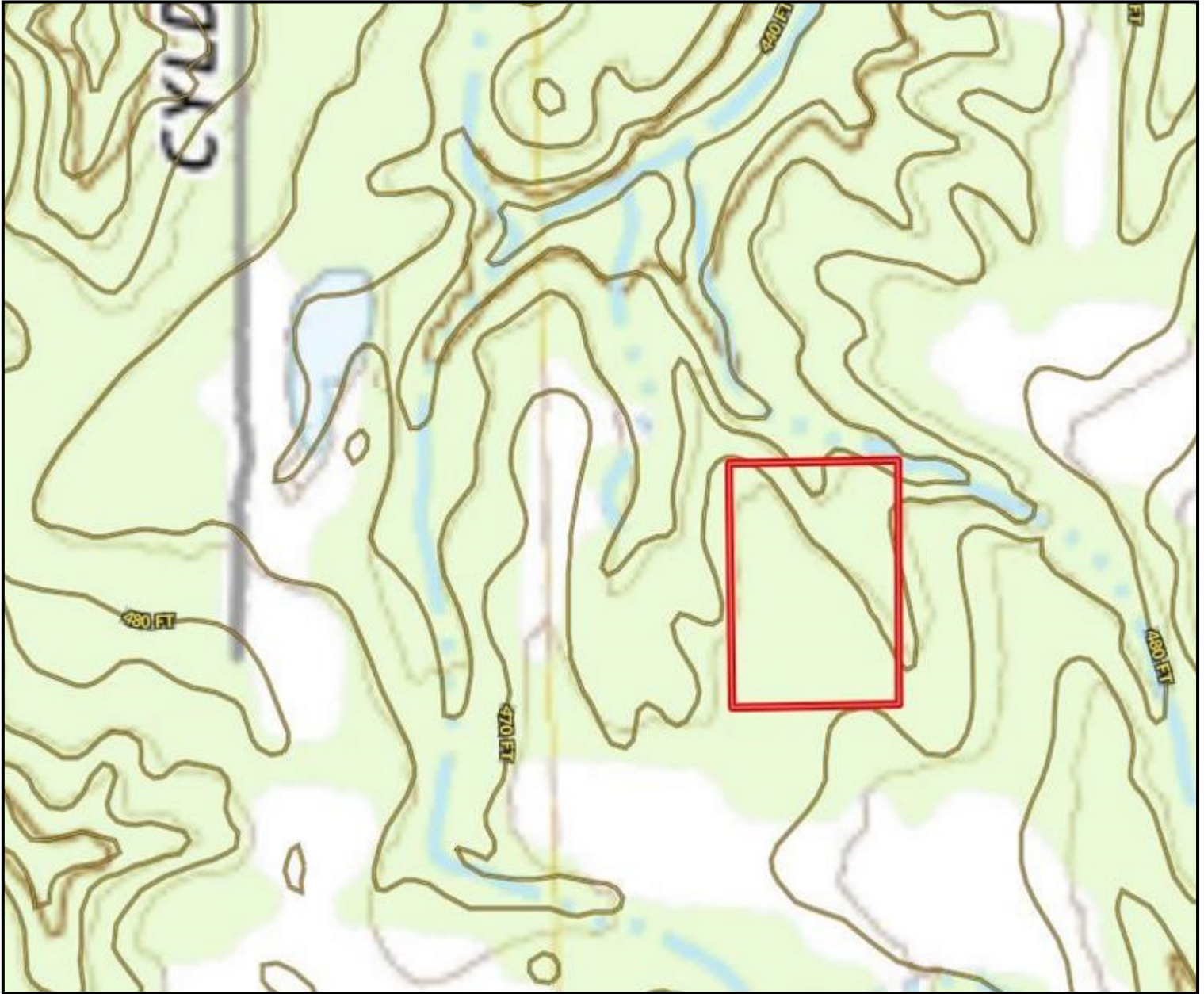
A Real Estate Expert You Can Trust

TomSmithLandandHomes.com

Information is believed to be accurate but not guaranteed.



TOPO MAP



TOM WISEMAN

ASSOCIATE BROKER

Office: 662.268.6333

Cell: 662.317.0467

TWiseman@TomSmithLand.com



A Real Estate Expert You Can Trust

TomSmithLandandHomes.com

Information is believed to be accurate but not guaranteed.



FLOOD MAP



TOM WISEMAN

ASSOCIATE BROKER

Office: 662.268.6333

Cell: 662.317.0467

TWiseman@TomSmithLand.com



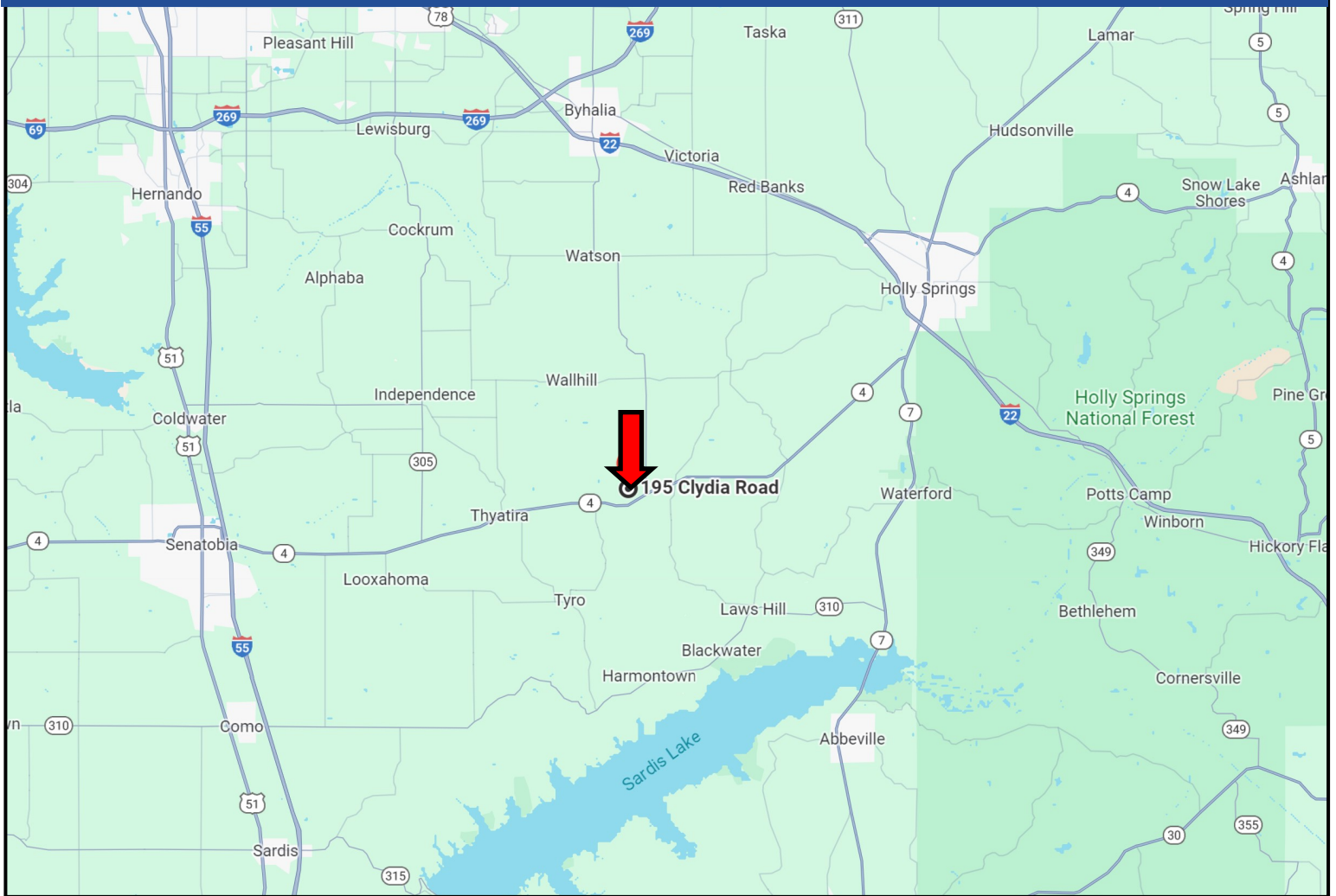
A Real Estate Expert You Can Trust

TomSmithLandandHomes.com

Information is believed to be accurate but not guaranteed.



DIRECTIONAL MAP



Directions from the intersection of Hwy 4 and Hwy 311 in Holly Springs, MS: Travel Hwy 311 north for 7.4 miles. Turn left onto Pleasant Hill Drive and travel .6 miles. Turn left to Dollie Irene Road and travel .2 miles. Turn left onto Leonard Lane. After 500 feet, the property will be on the right.

[GOOGLE MAP LINK](#)



**TOM
WISEMAN**
ASSOCIATE BROKER
Office: 662.268.6333
Cell: 662.317.0467
TWiseman@TomSmithLand.com



A Real Estate Expert You Can Trust

TomSmithLandandHomes.com

Information is believed to be accurate but not guaranteed.

