



EXCELLENT HUNTING TRACT 50± Acres in Holmes County, MS



- **Great Location**
- **Mixed Stand with Open Areas**
- **Multiple Direct Access**
- **Utilities Available**
- **Hunting Potential**
- **Multiple Home Sites**

\$249,000

This 50± acre Holmes County property offers a fantastic opportunity to own a desirable piece of land within an hour's drive from the Metro-Jackson area, just north of Goodman, MS. With direct access from multiple points, this tract has available electric and water utilities, including both single-phase and three-phase electricity access. The mature hardwoods make it an ideal spot for hunting, while its ample open areas allow for personal development such as dove fields, food plots, hay or pasture, and potential homesites. Easily manageable wildlife, including deer, turkey, squirrel, and dove, further enhance the property's appeal. This unique property won't last long—schedule a visit today to explore the possibilities of making it your own. The land is divided into forty acres on the east side and ten acres on the west side of Shady Grove Road—refer to the map for details. Drive by for a firsthand look, or contact me to discuss the property further or arrange a guided tour!



**SAM
SAMPLE**
REALTOR®

Office: 601.898.2772

Cell: 601.668.5697

Sam@TomSmithLand.com



A Real Estate Expert You Can Trust

TomSmithLandandHomes.com

Information is believed to be accurate but not guaranteed.





SAM SAMPLE

REALTOR®

Office: 601.898.2772

Cell: 601.668.5697

Sam@TomSmithLand.com



A Real Estate Expert You Can Trust

TomSmithLandandHomes.com

Information is believed to be accurate but not guaranteed.





SAM SAMPLE

REALTOR®

Office: 601.898.2772

Cell: 601.668.5697

Sam@TomSmithLand.com

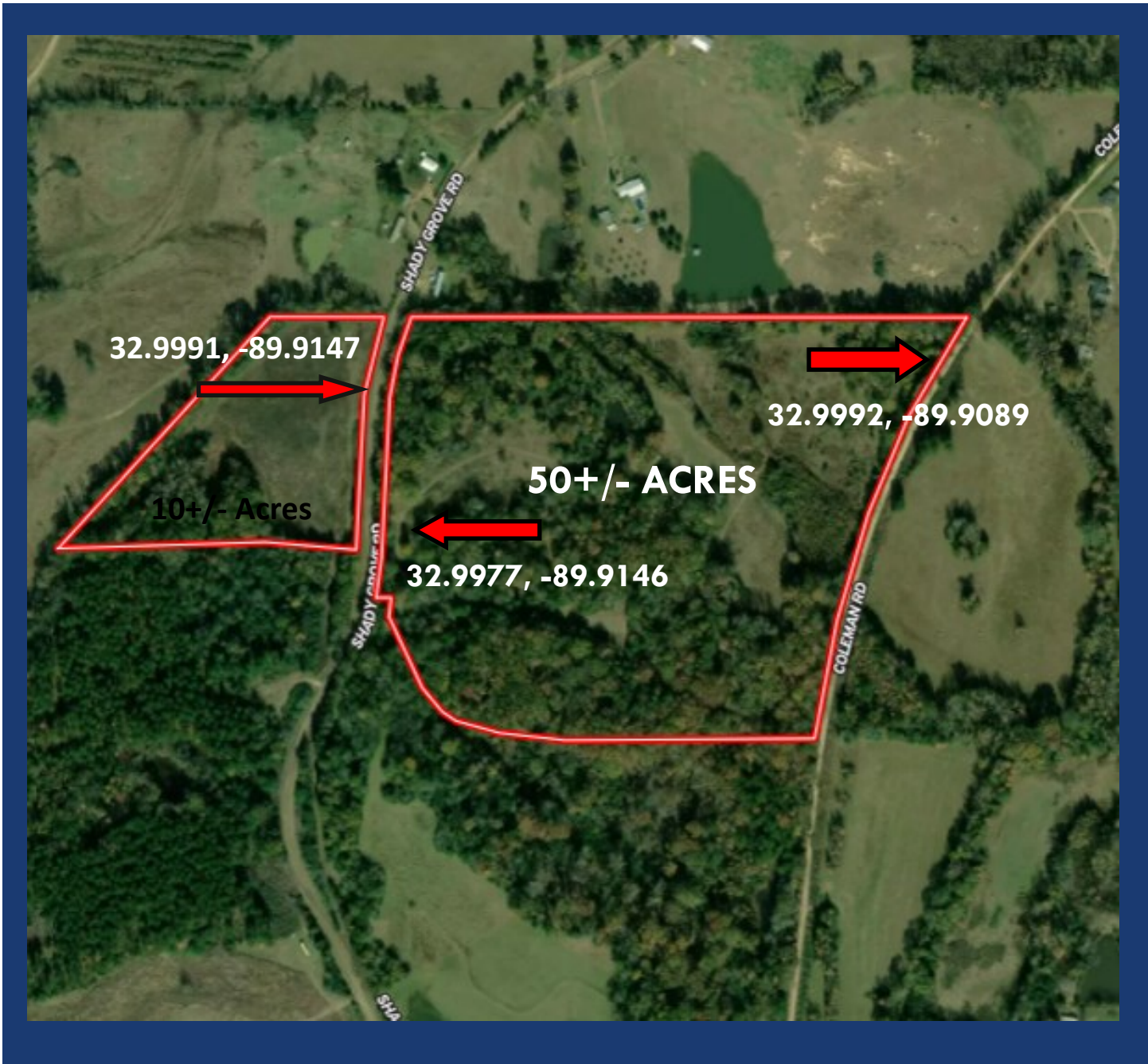


A Real Estate Expert You Can Trust

TomSmithLandandHomes.com

Information is believed to be accurate but not guaranteed.





AERIAL MAP

[CLICK HERE FOR AN INTERACTIVE MAP](#)

SAM SAMPLE

REALTOR®

Office: 601.898.2772

Cell: 601.668.5697

Sam@TomSmithLand.com

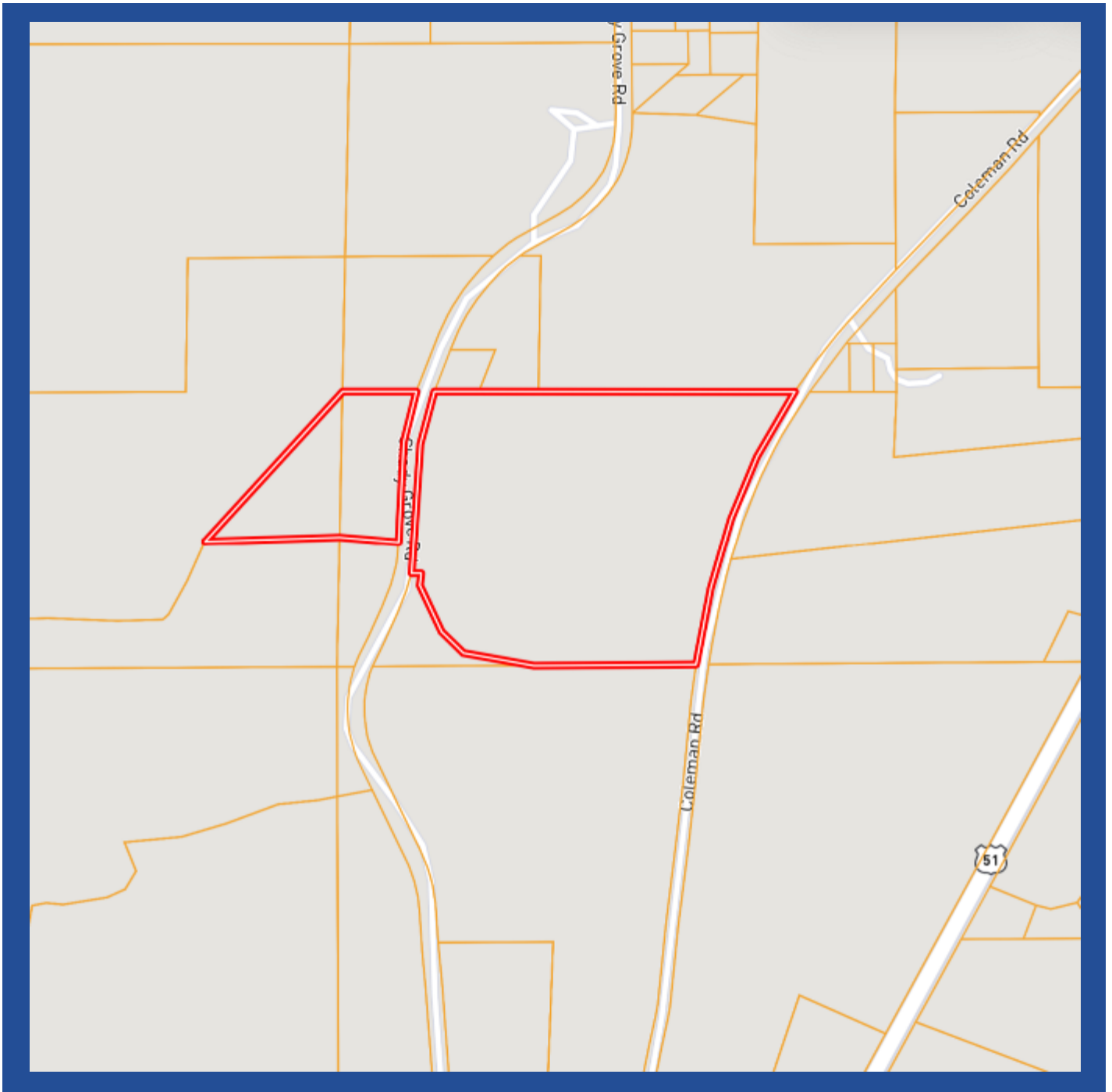


A Real Estate Expert You Can Trust

TomSmithLandandHomes.com

Information is believed to be accurate but not guaranteed.





OWNERSHIP MAP

SAM SAMPLE

REALTOR®

Office: 601.898.2772

Cell: 601.668.5697

Sam@TomSmithLand.com

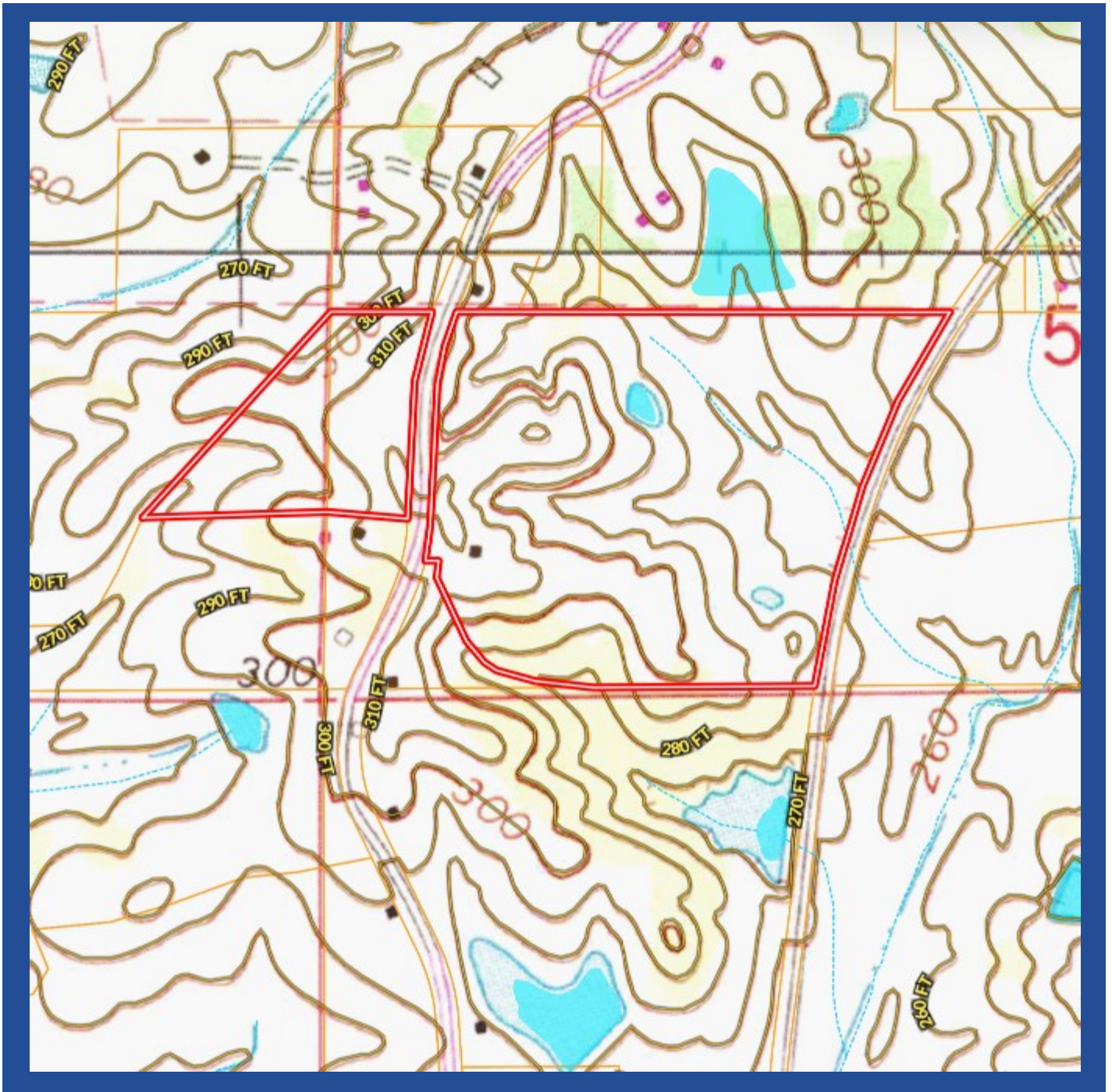


A Real Estate Expert You Can Trust

TomSmithLandandHomes.com

Information is believed to be accurate but not guaranteed.

2011-2023
BEST
BROKERAGES



TOPOGRAPHY MAP

SAM SAMPLE

REALTOR®

Office: 601.898.2772

Cell: 601.668.5697

Sam@TomSmithLand.com

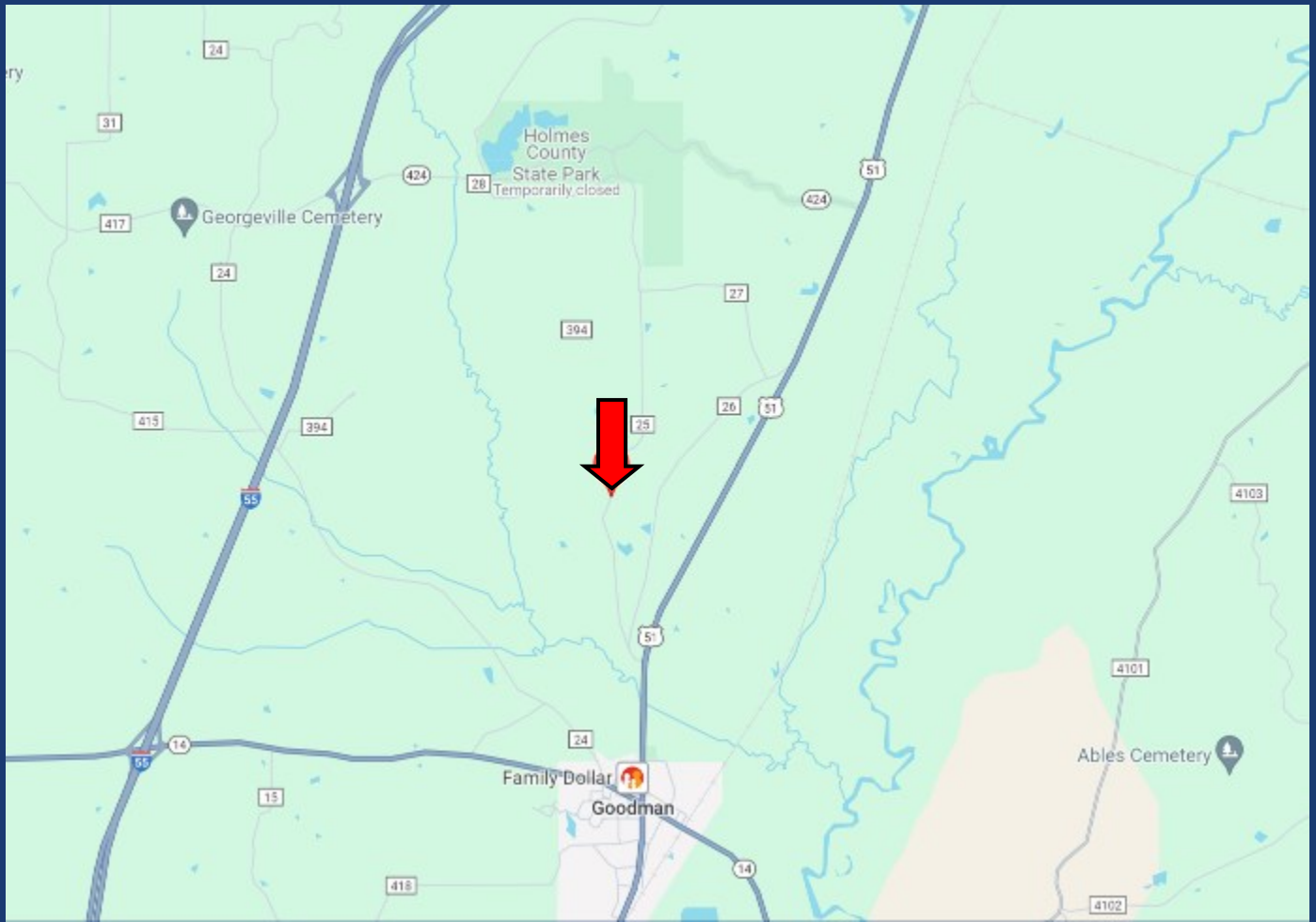


A Real Estate Expert You Can Trust

TomSmithLandandHomes.com

Information is believed to be accurate but not guaranteed.

2011-2023
BEST
BROKERAGES



DIRECTIONAL MAP



Directions from the intersection of Hwy 51 and Hwy 14 in Goodman, MS: Travel north on Hwy 51 for .9 mile. Turn left on Shady Grove Road and travel 1.1 miles. The property will be on your right. See map for additional access points. GPS: 32.9977, -89.9146. [GOOGLE MAP LINK](#)



**SAM
SAMPLE**
REALTOR®

Office: 601.898.2772
Cell: 601.668.5697
Sam@TomSmithLand.com



A Real Estate Expert You Can Trust

TomSmithLandandHomes.com

Information is believed to be accurate but not guaranteed.

