

2.07± Commercial Lot and Metal Building Choctaw County, MS



\$185,000

Are you looking for a prime commercial investment opportunity? Look no further! This 2.07± acre commercial lot in Choctaw County, MS, sits conveniently on Hwy 15 North of Ackerman and features the former Plum Creek office building. The property features a 2,000+/- square foot metal building with a sturdy concrete floor, offering four interior offices, a 6x8 bathroom, a conference room, and storage space. Security is ensured with approximately 1,000 feet of exterior fence and a gate, providing peace of mind for your investment. Additionally, there's an all-weather gravel parking area for convenience. The property also includes a 1,240+/- seedling cooler and two outbuildings, adding further value to the property. Ready to explore this opportunity further? Schedule your tour with Doyes today!



**DOYES
HOLLAND**
REALTOR®

Office: 662.268.6333

Cell: 662.312.2165

DHolland@TomSmithLand.com



A Real Estate Expert You Can Trust

TomSmithLandandHomes.com

Information is believed to be accurate but not guaranteed.





DOYES HOLLAND
REALTOR®

Office: 662.268.6333

Cell: 662.312.2165

DHolland@TomSmithLand.com



A Real Estate Expert You Can Trust
TomSmithLandandHomes.com

Information is believed to be accurate but not guaranteed.

2011-2023
BEST
BROKERAGES



DOYES HOLLAND
REALTOR®

Office: 662.268.6333

Cell: 662.312.2165

DHolland@TomSmithLand.com



A Real Estate Expert You Can Trust
TomSmithLandandHomes.com

Information is believed to be accurate but not guaranteed.

2011-2023
BEST
BROKERAGES



DOYES HOLLAND
REALTOR®

Office: 662.268.6333

Cell: 662.312.2165

DHolland@TomSmithLand.com



A Real Estate Expert You Can Trust
TomSmithLandandHomes.com

Information is believed to be accurate but not guaranteed.





DOYES HOLLAND
REALTOR®

Office: 662.268.6333

Cell: 662.312.2165

DHolland@TomSmithLand.com



A Real Estate Expert You Can Trust
TomSmithLandandHomes.com

Information is believed to be accurate but not guaranteed.



Aerial Map



[Click Here for an Interactive Map](#)

DOYES HOLLAND
REALTOR®

Office: 662.268.6333

Cell: 662.312.2165

DHolland@TomSmithLand.com

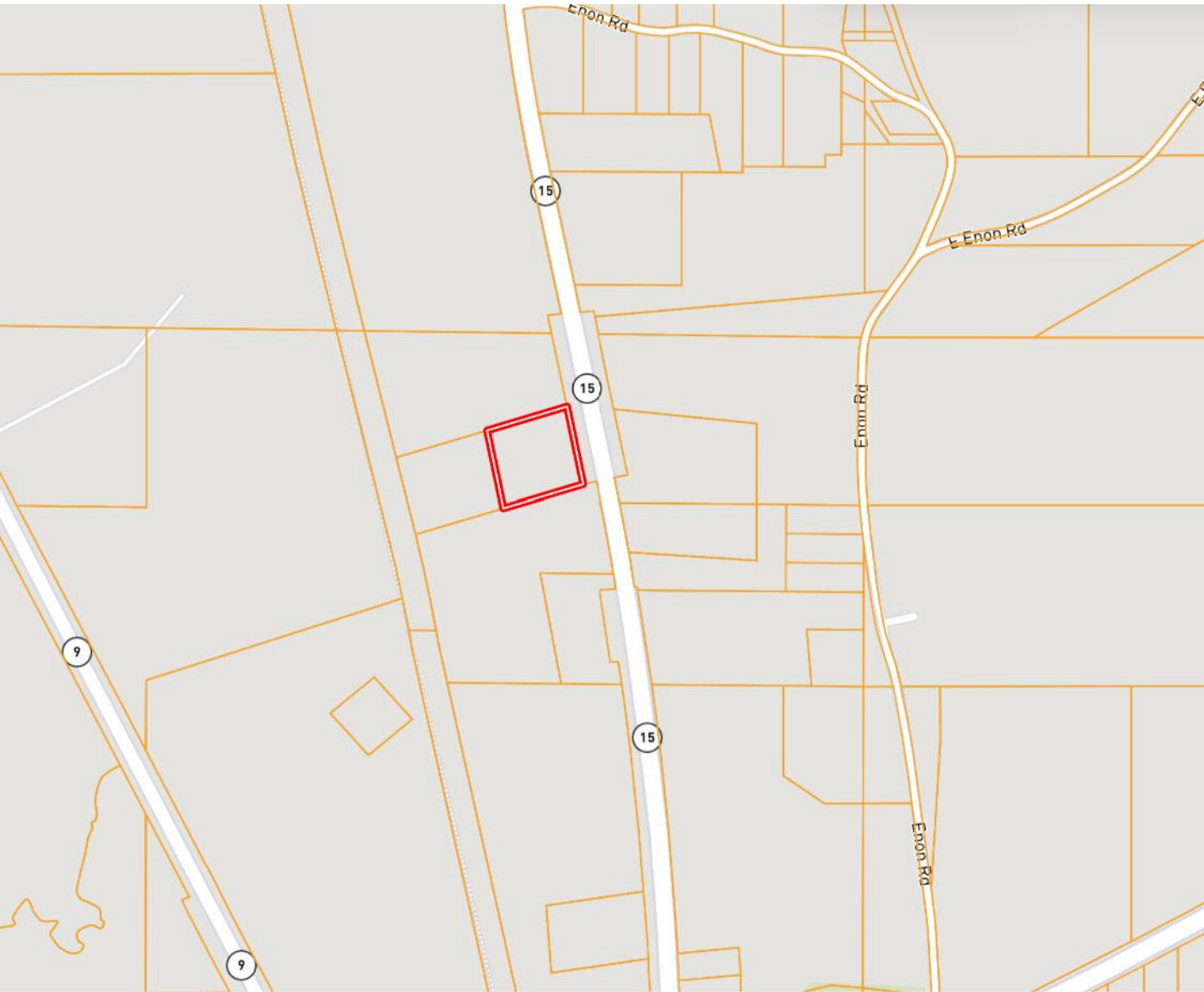


A Real Estate Expert You Can Trust
TomSmithLandandHomes.com

Information is believed to be accurate but not guaranteed.

2011-2023
**BEST
BROKERAGES**

Ownership Map



DOYES HOLLAND
REALTOR®

Office: 662.268.6333

Cell: 662.312.2165

DHolland@TomSmithLand.com

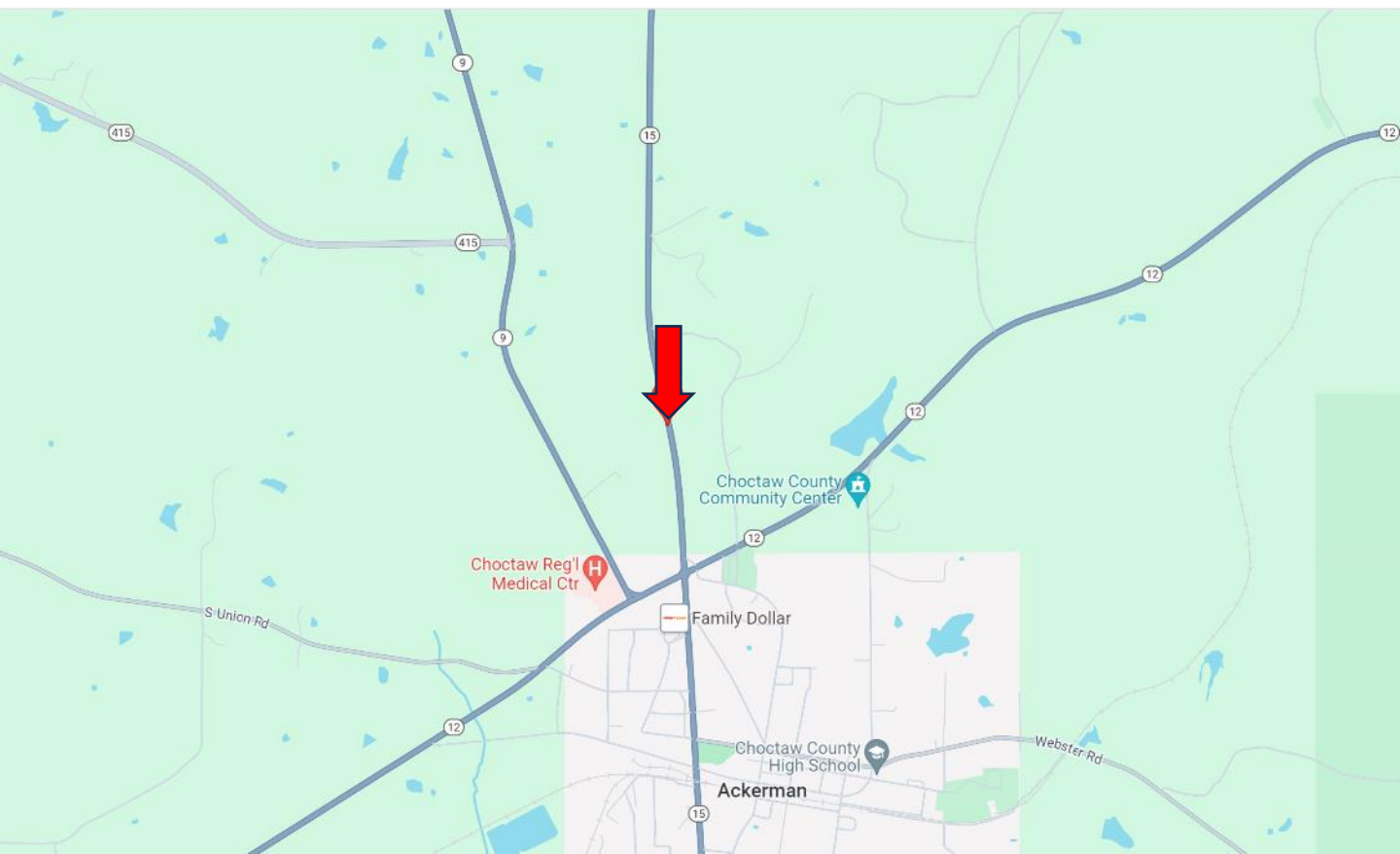


A Real Estate Expert You Can Trust
TomSmithLandandHomes.com

Information is believed to be accurate but not guaranteed.



Directional Map



Directions from intersection of Hwy 12 West and Hwy 15 in Ackerman, MS: Travel North on Hwy 15 North for approximately 1 mile. The property will be on the left. [GOOGLE MAP LINK](#)



DOYES
HOLLAND
REALTOR®

Office: 662.268.6333

Cell: 662.312.2165

DHolland@TomSmithLand.com



A Real Estate Expert You Can Trust

TomSmithLandandHomes.com

Information is believed to be accurate but not guaranteed.

